

UNITED STATES
DEPARTMENT OF THE INTERIOR
BUREAU OF LAND MANAGEMENT

APPLICATION FOR PERMIT TO DRILL, DEEPEN, OR PLUG BACK

1a. TYPE OF WORK

DRILL ☒

DEEPEN ☐

PLUG BACK ☐

b. TYPE OF WELL

OIL
WELL ☐

GAS
WELL ☒

OTHER

SINGLE
ZONE ☒

MULTIPLE
ZONE ☐

2. NAME OF OPERATOR

POGO PRODUCING COMPANY

3. ADDRESS OF OPERATOR

P. O. BOX 10340, MIDLAND, TEXAS 79702

4. LOCATION OF WELL (Report location clearly and in accordance with any State requirements.)*
At surface

720' FNL AND 2005' FEL OF SECTION 11

At proposed prod. zone

14. DISTANCE IN MILES AND DIRECTION FROM NEAREST TOWN OR POST OFFICE*

4.5 MILES NORTHWEST OF LOCO HILLS, NEW MEXICO

15. DISTANCE FROM PROPOSED*

LOCATION TO NEAREST
PROPERTY OR LEASE LINE, FT.
(Also to nearest drlg. unit line, if any) 720'

18. DISTANCE FROM PROPOSED LOCATION*
TO NEAREST WELL, DRILLING, COMPLETED,
OR APPLIED FOR, ON THIS LEASE, FT. 390'

16. NO. OF ACRES IN LEASE

200

19. PROPOSED DEPTH

11,200

17. NO. OF ACRES ASSIGNED
TO THIS WELL

320

20. ROTARY OR CABLE TOOLS

ROTARY

21. ELEVATIONS (Show whether DF, RT, GR, etc.)

3641' GR

22. APPROX. DATE WORK WILL START*

UPON APPROVAL

23. PROPOSED CASING AND CEMENTING PROGRAM

SIZE OF HOLE	SIZE OF CASING	WEIGHT PER FOOT	SETTING DEPTH	QUANTITY OF CEMENT
17-1/2"	13-3/8"	54.5#	450'	SUFFICIENT TO CIRCULATE
12-1/4"	9-5/8"	40#	4500'	SUFFICIENT TO CIRCULATE
8-1/2" & 7-7/8"	5-1/2"	17# & 20#	11,100'	1400 SACKS - TO TIE BACK
- ALTERNATE CASING STRINGS IF LOST CIRCULATION PROBLEM ENCOUNTERED -				
8-1/2"	7"	26# & 29#	9500'	1400 SACKS - TO TIE BACK
6-1/8"	4-1/2" Liner	13.5#	11,100'	200 SACKS - CIRCULATE LINER

AFTER SETTING PRODUCTION CASING, PAY ZONE WILL BE PERFORATED
AND STIMULATED AS NECESSARY.

SEE ATTACHED FOR: SUPPLEMENTAL DRILLING DATA
BOP SKETCHES
SURFACE USE AND OPERATIONS PLAN
HYDROGEN SULFIDE DRILLING OPERATIONS PLAN

IN ABOVE SPACE DESCRIBE PROPOSED PROGRAM: If proposal is to deepen or plug back, give data on present productive zone and proposed new productive zone. If proposal is to drill or deepen directionally, give pertinent data on subsurface locations and measured and true vertical depths. Give blowout preventer program, if any.

24.

SIGNED

Richard L. Manus

TITLE

Division Operations Mgr.

DATE

February 11, 1994

(This space for Federal or State office use)

PERMIT NO.

APPROVAL DATE

APPROVED BY (ORIG. SGD.) RICHARD L. MANUS

TITLE

AREA MANAGER

DATE

MAR 7 1994

CONDITIONS OF APPROVAL, IF ANY:

APPROVAL SUBJECT TO
GENERAL REQUIREMENTS AND
SPECIAL STIPULATIONS
ATTACHED

*See Instructions On Reverse Side

Submit to Appropriate
District Office
State Lease - 4 copies
Fee Lease - 3 copies

State of New Mexico
Energy, Minerals and Natural Resources Department

Form C-102
Revised 1-1-89

OIL CONSERVATION DIVISION

DISTRICT I
P.O. Box 1980, Hobbs, NM 88240

P.O. Box 2088
Santa Fe, New Mexico 87504-2088

DISTRICT II
P.O. Drawer DD, Artesia, NM 88210

DISTRICT III
1000 Rio Brazos Rd., Aztec, NM 87410

WELL LOCATION AND ACREAGE DEDICATION PLAT

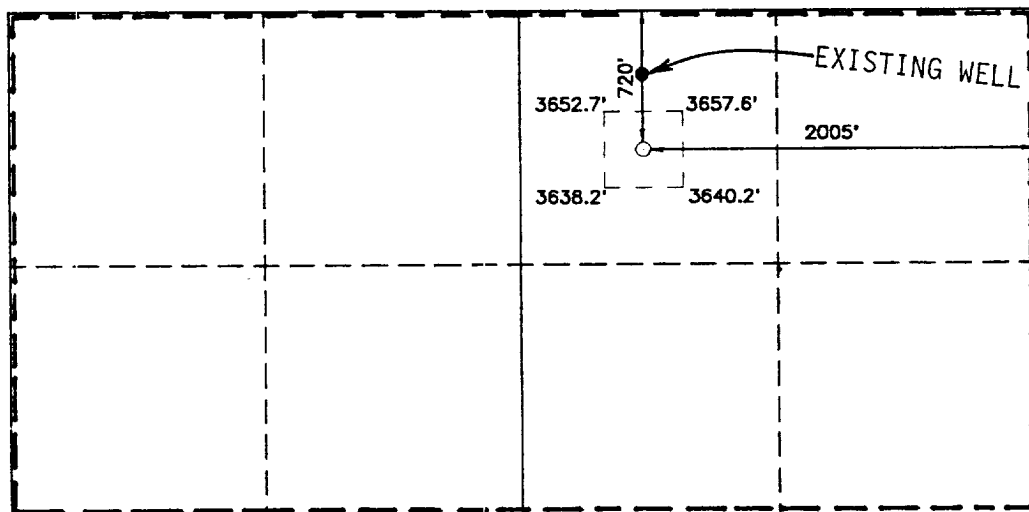
All Distances must be from the outer boundaries of the section

Operator POGO PRODUCING COMPANY			Lease SABER FEDERAL		Well No. 1
Unit Letter B	Section 11	Township 17 SOUTH	Range 29 EAST	NMPM	County EDDY
Actual Footage Location of Well: 720 feet from the NORTH line and 2005 feet from the EAST line					
Ground Level Elev. 3641'	Producing Formation MORROW	Pool UNDESIGNATED/ SOUTH EMPIRE MORROW GAS	Dedicated Acreage: 320 Acres		

- Outline the acreage dedicated to the subject well by colored pencil or hachure marks on the plat below.
- If more than one lease is dedicated to the well, outline each and identify the ownership thereof (both as to working interest and royalty).
- If more than one lease of different ownership is dedicated to the well, have the interest of all owners been consolidated by communitization, unitization, force-pooling, etc.?
☐ Yes ☒ No If answer is "yes" type of consolidation TO BE COMMUNITIZED

If answer is "no" list of owners and tract descriptions which have actually been consolidated. (Use reverse side of this form necessary.)

No allowable will be assigned to the well unit all interests have been consolidated (by communitization, unitization, forced-pooling, otherwise) or until a non-standard unit, eliminating such interest, has been approved by the Division.



THE EXISTING WELL INDICATED ABOVE, OPERATED BY MARBOB ENERGY, PRODUCES FROM THE SQUARE LAKE GRBG-SA POOL, AND MARBOB IS AWARE OF THIS PROPOSED DRILLING.

OPERATOR CERTIFICATION

I hereby certify the the information contained herein is true and complete to the best of my knowledge and belief.

Signature *Richard L. Wright*

Printed Name
Richard L. Wright

Position
Division Operations Mgr.

Company
POGO PRODUCING COMPANY

Date
February 1, 1994

SURVEYOR CERTIFICATION

I hereby certify that the well location shown on this plat was plotted from field notes of actual surveys made by me or under my supervision, and that the same is true and correct to the best of my knowledge and belief.

Date Surveyed
JANUARY 4, 1994

Signature & Seal of Professional Surveyor No. 3239

Ronald J. Eidson
Certificate No. JOHN W. WEST, 676
RONALD J. EIDSON, 3239
GARY L. JONES, 7977

94-11-0011

SUPPLEMENTAL DRILLING DATA

POGO PRODUCING COMPANY

SABER FEDERAL WELL NO. 1

1. SURFACE FORMATION: Quaternary.

2. ESTIMATED TOPS OF GEOLOGIC MARKERS:

Anhydrite	160'	Wolfcamp	7465'
Yates	950'	Cisco	8850'
Queen	1850'	Canyon	9250'
San Andres	2500'	Strawn	10,100'
Glorieta	3900'	Atoka	10,450'
Abo	6300'	Morrow	10,750'

3. ANTICIPATED POSSIBLE HYDROCARBON BEARING ZONES:

Morrow Gas

4. PROPOSED CASING AND CEMENTING PROGRAM:

CASING SIZE	SETTING DEPTH		WEIGHT	GRADE	JOINT
	FROM	TO			
13-3/8"	0	450'	54.5#	J-55	STC
9-5/8"	0	4500'	40#	N-80	LTC
5-1/2"	0	1000'	20#	N-80	LTC
5-1/2"	1000'	10,000'	17#	N-80	LTC
5-1/2"	10,000'	11,100'	20#	N-80	LTC

DUE TO POSSIBLE LOST CIRCULATION PROBLEMS, PLANS PROVIDE FOR POSSIBLE USE OF THE FOLLOWING ALTERNATE CASING STRINGS:

7"	0	8000'	26#	N-80	LTC
7"	8000'	9500'	29#	N-80	LTC
4-1/2" Liner	9200'	11,100'	13.5#	N-80	LTC

MINIMUM

DESIGN FACTORS: COLLAPSE 1.2 BURST 1.2 TENSION 2.0

13-3/8" casing to be cemented with 400 sacks of light cement followed by 100 sacks of premium cement. Cement to circulate.