

NM OIL CONS. COMMISSION  
DRA JR DD  
ATTENTION UNITED STATES

SUBMIT IN DUPLICATE\*  
(Other instructions on  
reverse side)

30-015-27921

Form approved.  
Budget Bureau No. 1004-0136  
Expires August 31, 1985

DEPARTMENT OF THE INTERIOR  
BUREAU OF LAND MANAGEMENT

APPLICATION FOR PERMIT TO DRILL, DEEPEN, OR PLUG BACK

1a. TYPE OF WORK

DRILL ☒

DEEPEN ☐

PLUG BACK ☐

b. TYPE OF WELL

OIL  
WELL ☒

GAS  
WELL ☐

OTHER

SINGLE  
ZONE ☒

MULTIPLE  
ZONE ☐

2. NAME OF OPERATOR

Burnett Oil Co., Inc. ✓

3. ADDRESS OF OPERATOR

801 Cherry St. Suite 1500, Fort Worth, Tx. 76102

4. LOCATION OF WELL (Report location clearly and in accordance with any State requirements.)\*

At surface

Unit J 1905' FEL, 2250' FSL Sec.24, T17S, R30E

At proposed prod. zone Same

14. DISTANCE IN MILES AND DIRECTION FROM NEAREST TOWN OR POST OFFICE\*

3.5 Miles East of Loco Hills, New Mexico

10. DISTANCE FROM PROPOSED\*

LOCATION TO NEAREST  
PROPERTY OR LEASE LINE, FT.  
(Also to nearest drig. unit line, if any)

1905'

16. NO. OF ACRES IN LEASE

720(contiguous)

18. DISTANCE FROM PROPOSED LOCATION\*

TO NEAREST WELL, DRILLING, COMPLETED,  
OR APPLIED FOR, ON THIS LEASE, FT.

280'

19. PROPOSED DEPTH

3250'

17. NO. OF ACRES ASSIGNED  
TO THIS WELL

40

20. ROTARY OR CABLE TOOLS

Rotary

21. ELEVATIONS (Show whether DF, RT, GR, etc.)

3701' GR

22. APPROX. DATE WORK WILL START\*

March 15, 1994

23.

PROPOSED CASING AND CEMENTING PROGRAM

SIZE OF HOLE	SIZE OF CASING	WEIGHT PER FOOT	SETTING DEPTH	QUANTITY OF CEMENT
12 1/4"	8 5/8"	24#	475'	+/- 300 sks. C1 C (to surface)
7 7/8"	5 1/2"	17#	3250'	+/-1000sks C1 H(see drilling plan)
(TIE BACK TO 8 5/8" CSG)				

A 12 1/4" surface hole will be drilled to approximately 475'. 8 5/8" casing will be run to this depth and cemented back to surface. WOC 12 hrs., test casing & BOP. A 7 7/8" hole will be drilled to a depth of approximately 3250'. 5 1/2" casing will be run to this depth and cemented back to the base of the salt at approximately 1250'. If no water flows are encountered, open hole logs will be run. If we have water flows, cased hole logs will be run. The well will be conventionally completed in the Grayburg intervals.

Post ID-1  
4-22-94  
New Loc & API

IN ABOVE SPACE DESCRIBE PROPOSED PROGRAM: If proposal is to deepen or plug back, give data on present productive zone and proposed new productive zone. If proposal is to drill or deepen directionally, give pertinent data on subsurface locations and measured and true vertical depths. Give blowout preventer program, if any.

24.

SIGNED

Production Superintendent

DATE February 11, 1994

(This space for Federal or State office use)

PERMIT NO.

APPROVAL DATE

AREA MANAGER

APPROVED BY

TITLE

DATE

APR 18 1994

CONDITIONS OF APPROVAL, IF ANY:

\*See Instructions On Reverse Side

Title 18 U.S.C. Section 1001, makes it a crime for any person knowingly and willfully to make to any department or agency of the United States any false, fictitious or fraudulent statements or representations as to any matter within its jurisdiction.

Submit to Appropriate  
District Office  
State Lease - 4 copies  
Fee Lease - 3 copies

State of New Mexico  
Energy, Minerals and Natural Resources Department

Form C-102  
Revised 1-1-89

OIL CONSERVATION DIVISION

DISTRICT I  
P.O. Box 1980, Hobbs, NM 88240

P.O. Box 2088  
Santa Fe, New Mexico 87504-2088

DISTRICT II  
P.O. Drawer DD, Artesia, NM 88210

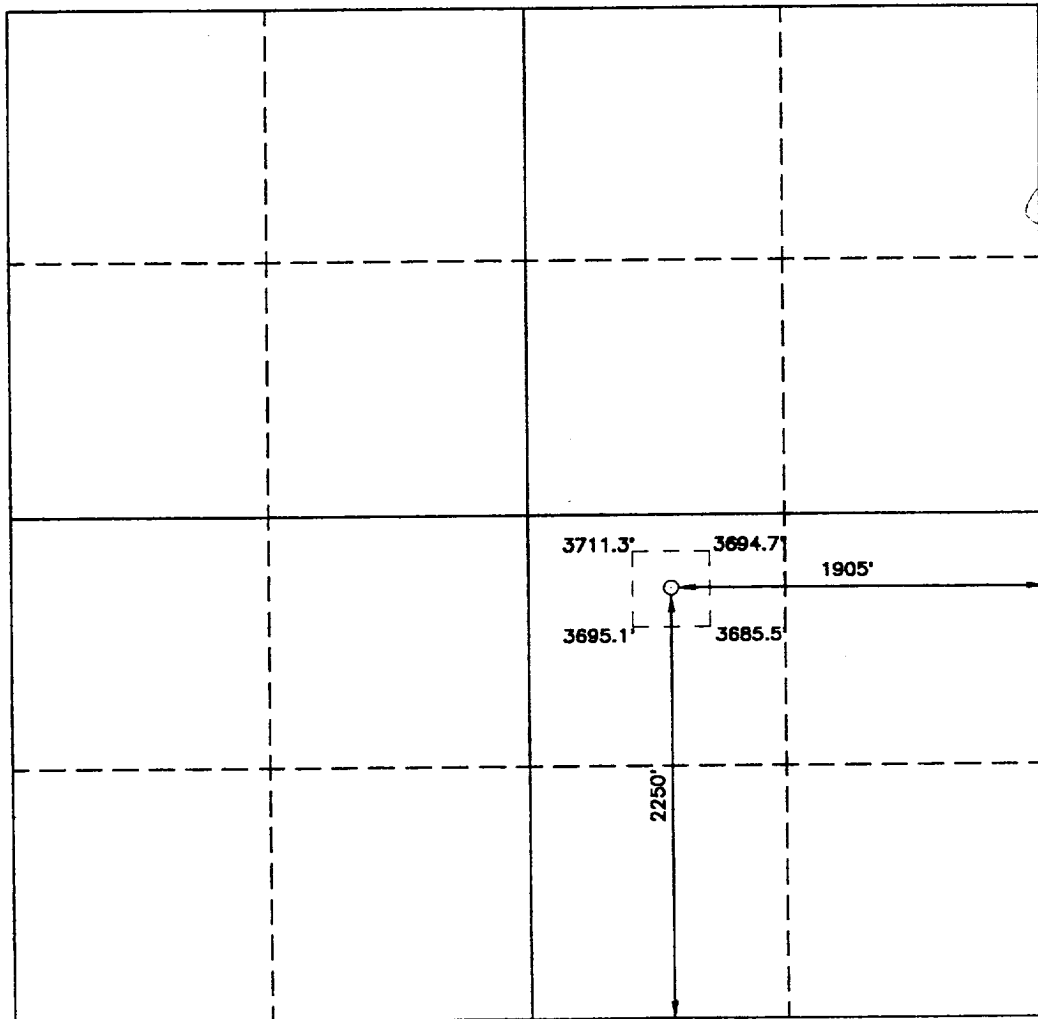
DISTRICT III  
1000 Rio Brazos Rd., Aztec, NM 87410

WELL LOCATION AND ACREAGE DEDICATION PLAT

All Distances must be from the outer boundaries of the section

Operator <b>BURNETT OIL CO. INC.</b>		Lease <b>JACKSON "B"</b>		Well No. <b>36</b>
Unit Letter <b>J</b>	Section <b>24</b>	Township <b>17 SOUTH</b>	Range <b>30 EAST</b> NMPM	County <b>EDDY</b>
Actual Footage Location of Well: <b>2250</b> feet from the <b>SOUTH</b> line and <b>1905</b> feet from the <b>EAST</b> line				
Ground Level Elev. <b>3701'</b>	Producing Formation <b>GRAYBURG</b>	Pool <b>GRAYBURG-JACKSON</b>	Dedicated Acreage: <b>40</b> Acres	

- Outline the acreage dedicated to the subject well by colored pencil or hatchure marks on the plat below.
- If more than one lease is dedicated to the well, outline each and identify the ownership thereof (both as to working interest and royalty).
- If more than one lease of different ownership is dedicated to the well, have the interest of all owners been consolidated by communization, unitization, force-pooling, etc.?  
☐ Yes ☐ No If answer is "yes" type of consolidation \_\_\_\_\_  
If answer is "no" list of owners and tract descriptions which have actually been consolidated. (Use reverse side of this form necessary.)  
No allowable will be assigned to the well unit all interests have been consolidated (by communization, unitization, forced-pooling, otherwise) or until a non-standard unit, eliminating such interest, has been approved by the Division.



OPERATOR CERTIFICATION

I hereby certify the the information  
contained herein is true and complete to the  
best of my knowledge and belief.

Signature

Printed Name

**JOHN C. MCPHAUL**

Position

**PRODUCTION SUPT.**  
**Company**

**BURNETT OIL CO., INC.**

Date

**FEBRUARY 11, 1994**

SURVEYOR CERTIFICATION

I hereby certify that the well location shown  
on this plat was plotted from field notes of  
actual surveys made by me or under my  
supervision, and that the same is true and  
correct to the best of my knowledge and  
belief.

Date Surveyed

**FEBRUARY 1, 1994**

Signature of Registered  
Professional Surveyor

**7977**

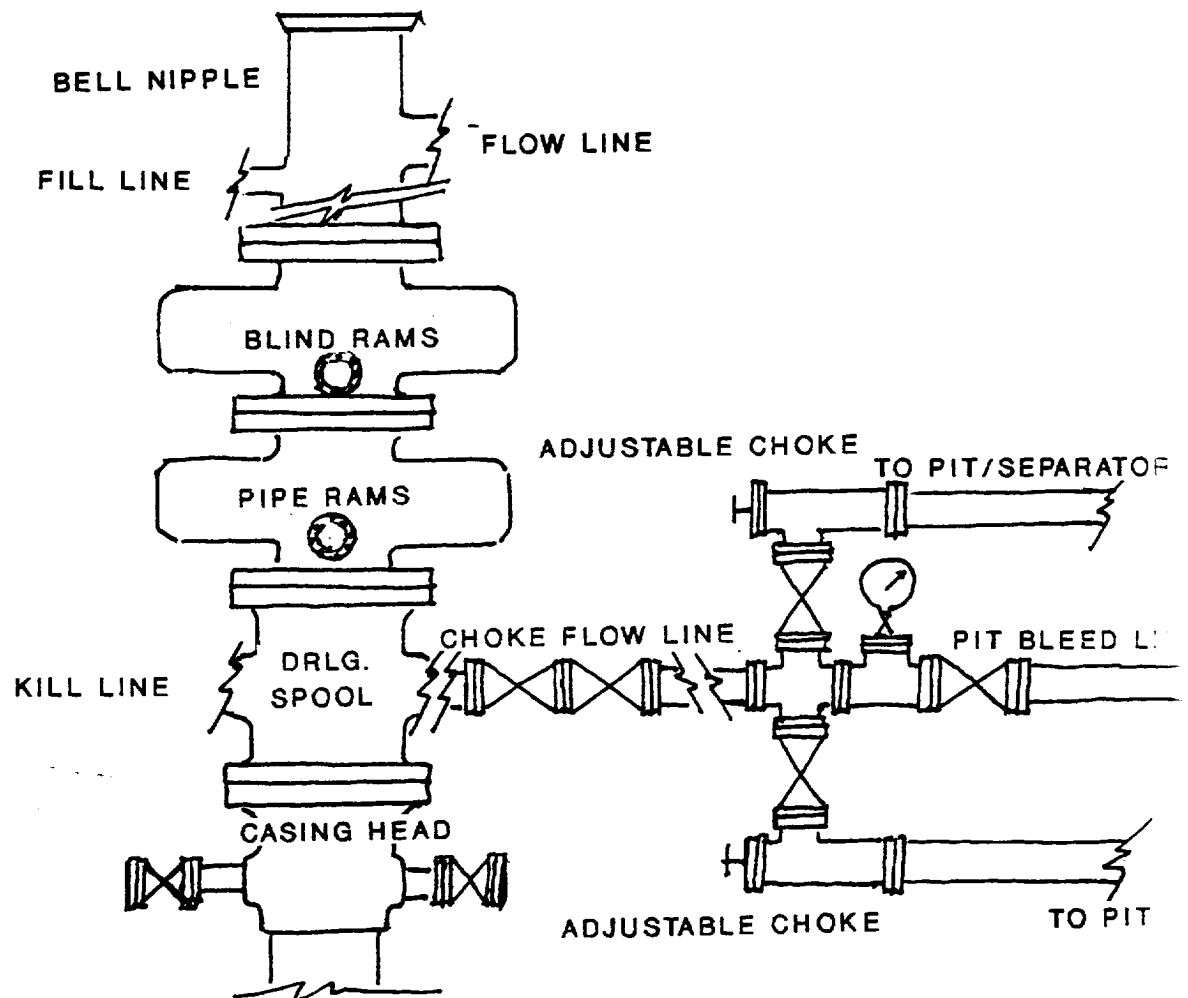
Certificate No. **JOHN W. WEST, 876**

**RONALD J. EIDSON, 3239**

**GARY L. JONES, 7977**

94-11-0215

EXHIBIT E



**BURNETT OIL CO., INC.**  
**BLOWOUT PREVENTER SKETCH**

3000 PSI WORKING PRESSURE  
 SERIES 900 FLANGES