

NM CONS. COMMISSION  
DRAWING  
ARTIFICIAL SITES  
DEPARTMENT OF THE INTERIOR  
BUREAU OF LAND MANAGEMENT

SUBMIT IN DATE\*  
(Other instructions on  
reverse side)

30-015-27922  
Form approved.  
Budget Bureau No. 1004-0136  
Expires August 31, 1985

APPLICATION FOR PERMIT TO DRILL, DEEPEN, OR PLUG BACK

1a. TYPE OF WORK  
DRILL ☒ DEEPEN ☐ PLUG BACK ☐

b. TYPE OF WELL  
OIL WELL ☒ GAS WELL ☐ OTHER ☐ SINGLE ZONE ☒ MULTIPLE ZONE ☐

2. NAME OF OPERATOR  
Burnett Oil Co., Inc. ✓

3. ADDRESS OF OPERATOR  
801 Cherry St. Suite 1500, Fort Worth, Tx 76102

4. LOCATION OF WELL (Report location clearly and in accordance with any State requirements.)\*  
At surface  
Unit G, 1680' FEL, 2230' FNL, Sec. 23, T17S, R30E  
At proposed prod. zone Same

14. DISTANCE IN MILES AND DIRECTION FROM NEAREST TOWN OR POST OFFICE\*  
2.5 Miles East of Loco Hills, NM

15. DISTANCE FROM PROPOSED\*  
LOCATION TO NEAREST  
PROPERTY OR LEASE LINE, FT.  
(Also to nearest drlg. unit line, if any) 910'

16. NO. OF ACRES IN LEASE  
160(contiguous)

17. NO. OF ACRES ASSIGNED  
TO THIS WELL  
40

18. DISTANCE FROM PROPOSED LOCATION\*  
TO NEAREST WELL, DRILLING, COMPLETED,  
OR APPLIED FOR, ON THIS LEASE, FT. 1025'

19. PROPOSED DEPTH  
3200'

20. ROTARY OR CABLE TOOLS  
Rotary

21. ELEVATIONS (Show whether DF, RT, GR, etc.)  
3662' GR

22. APPROX. DATE WORK WILL START\*  
March 20, 1994

23. PROPOSED CASING AND CEMENTING PROGRAM

SIZE OF HOLE	SIZE OF CASING	WEIGHT PER FOOT	SETTING DEPTH	QUANTITY OF CEMENT
12 1/4"	8 5/8"	24#	475'	+/-300 sks. C1 C (to surface)
7 7/8"	5 1/2"	17#	3200'	+/-1000 sks C1 H (see Drilling plan)

A 12 1/4" surface hole will be drilled to approximately 475'. 8 5/8" casing will be run to this depth and cemented back to the surface. WOC 12 hrs., test casing and BOP. A 7 7/8" hole will be drilled to approximately 3200'. 5 1/2" casing will be run to this depth and cemented back to the base of the salt at approximately 1250'. If no water flows are encountered, open hole logs will be run. If we have water flows, cased hole logs will be run. The well will be conventionally completed in the Grayburg intervals.

IN ABOVE SPACE DESCRIBE PROPOSED PROGRAM: If proposal is to deepen or plug back, give data on present productive zone and proposed new productive zone. If proposal is to drill or deepen directionally, give pertinent data on subsurface locations and measured and true vertical depths. Give blowout preventer program, if any.

24. SIGNED John C. Dwyer TITLE Production Superintendent DATE February 11, 1994

PERMIT NO. \_\_\_\_\_ APPROVAL DATE (locking)  
APPROVED BY Alan Dwyer TITLE AREA MANAGER DATE APR 18 1994

CONDITIONS OF APPROVAL, IF ANY: APPROVAL SUBJECT TO  
GENERAL REQUIREMENTS AND  
SPECIAL STIPULATIONS  
ATTACHED

\*See Instructions On Reverse Side

Submit to Appropriate  
District Office  
State Lease - 4 copies  
Fee Lease - 3 copies

State of New Mexico  
Energy, Minerals and Natural Resources Department

Form C-102  
Revised 1-1-89

OIL CONSERVATION DIVISION

P.O. Box 2088

Santa Fe, New Mexico 87504-2088

DISTRICT I

P.O. Box 1980, Hobbs, NM 88240

DISTRICT II

P.O. Drawer DD, Artesia, NM 88210

DISTRICT III

1000 Rio Brazos Rd., Aztec, NM 87410

WELL LOCATION AND ACREAGE DEDICATION PLAT

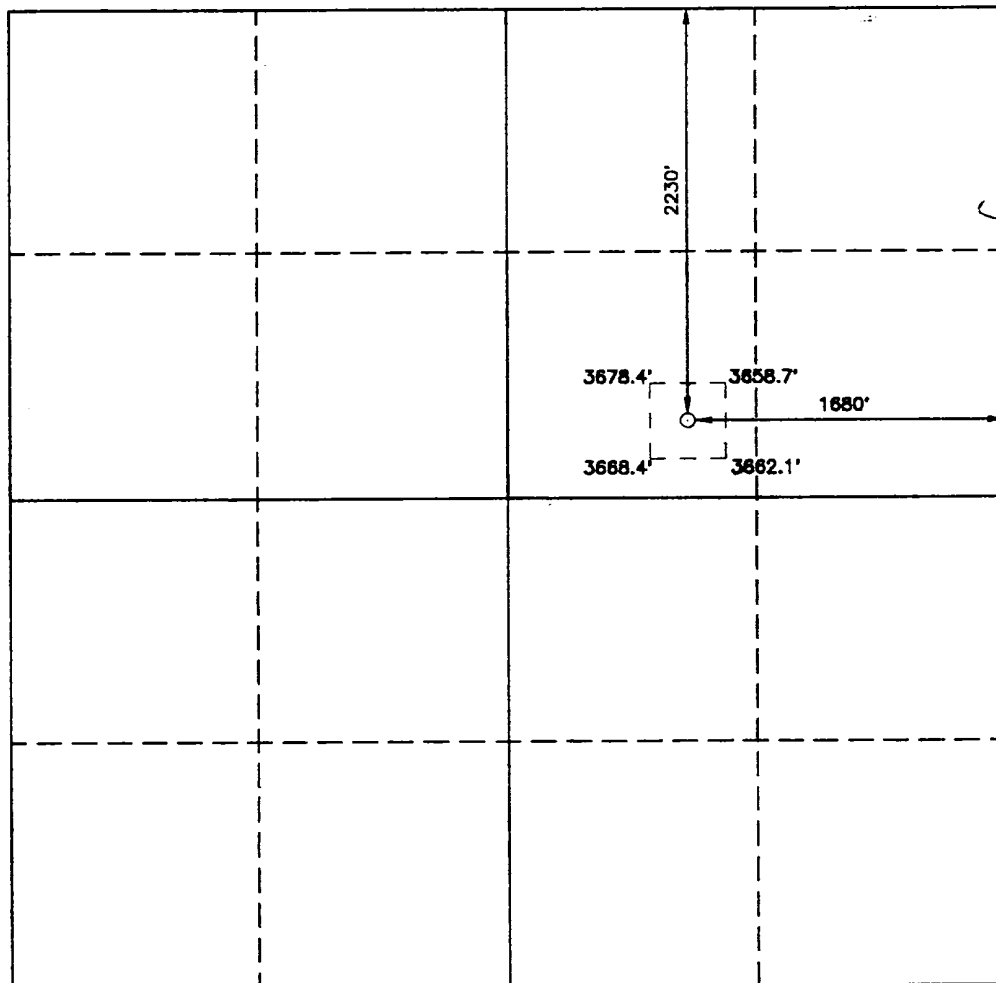
All Distances must be from the outer boundaries of the section

Operator <b>BURNETT OIL CO. INC.</b>		Lease <b>GISSLER "B"</b>		Well No. <b>30</b>
Unit Letter <b>G</b>	Section <b>23</b>	Township <b>17 SOUTH</b>	Range <b>30 EAST</b> NMPM	County <b>EDDY</b>
Actual Footage Location of Well: <b>2230</b> feet from the <b>NORTH</b> line and <b>1680</b> feet from the <b>EAST</b> line				
Ground Level Elev. <b>3662'</b>	Producing Formation <b>GRAYBURG</b>	Pool <b>GRAYBURG-JACKSON</b>	Dedicated Acreage: <b>40</b> Acres	

1. Outline the acreage dedicated to the subject well by colored pencil or hachure marks on the plat below.
2. If more than one lease is dedicated to the well, outline each and identify the ownership thereof (both as to working interest and royalty).
3. If more than one lease of different ownership is dedicated to the well, have the interest of all owners been consolidated by communitization, unitization, force-pooling, etc.?  
☐ Yes ☐ No If answer is "yes" type of consolidation \_\_\_\_\_

If answer is "no" list of owners and tract descriptions which have actually been consolidated. (Use reverse side of this form necessary.)

No allowable will be assigned to the well unit all interests have been consolidated (by communitization, unitization, forced-pooling, otherwise) or until a non-standard unit, eliminating such interest, has been approved by the Division.



OPERATOR CERTIFICATION

I hereby certify that the information contained herein is true and complete to the best of my knowledge and belief.

Signature

Printed Name  
**JOHN C. MCPHAUL**

Position  
**PRODUCTION SUPT.**

Company  
**BURNETT OIL CO., INC.**

Date  
**FEBRUARY 11, 1994**

SURVEYOR CERTIFICATION

I hereby certify that the well location shown on this plat was plotted from field notes of actual surveys made by me or under my supervision, and that the same is true and correct to the best of my knowledge and belief.

Date Surveyed  
**FEBRUARY 2, 1994**

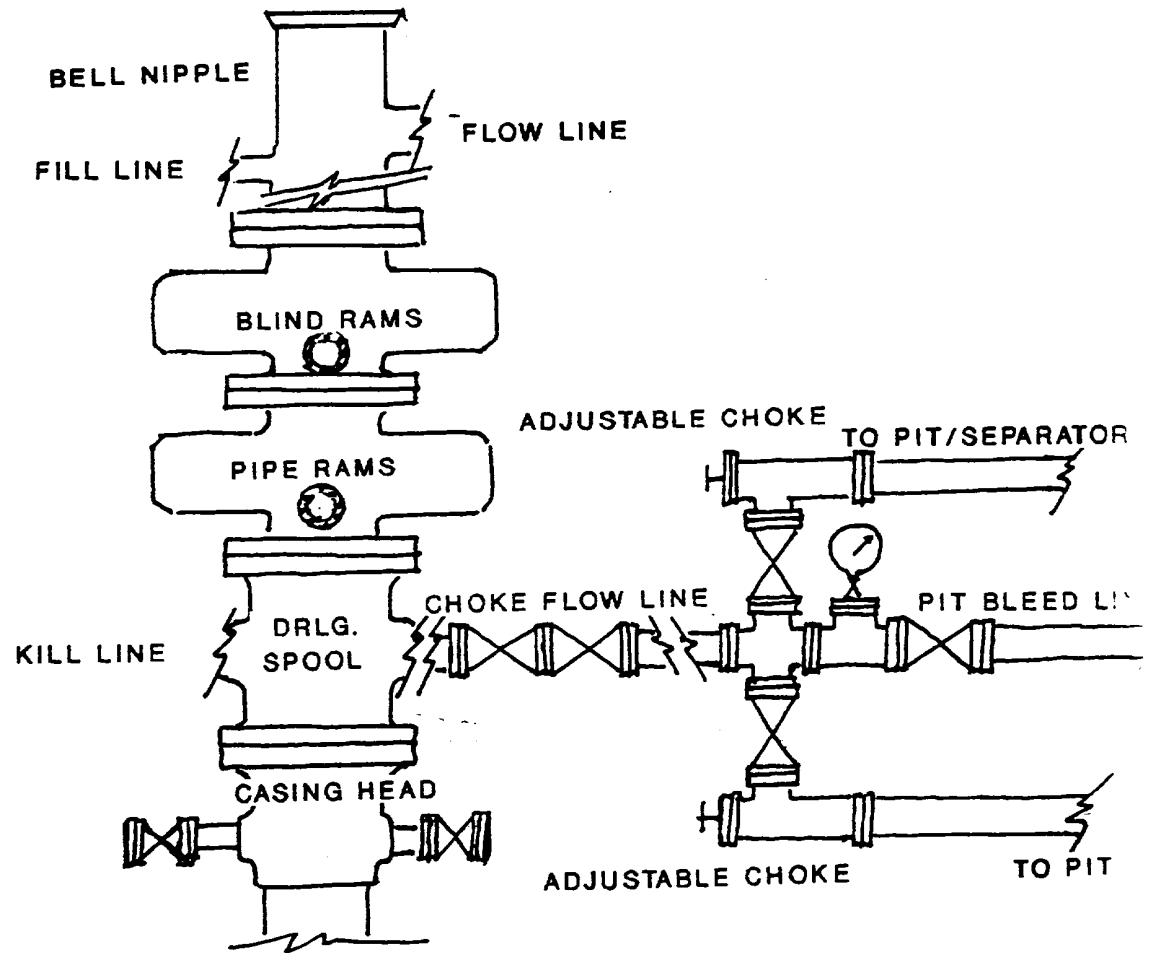
Signature & Seal of  
Professional Surveyor



Certificate No. **JOHN W. WEST, 676**  
**PROFESSIONAL SURVEYOR, 3239**  
**GARY L. JONES, 7977**

94-11-0216

EXHIBIT E



**BURNETT OIL CO., INC.**  
**BLOWOUT PREVENTER SKETCH**

3000 PSI WORKING PRESSURE  
 SERIES 900 FLANGES

30-015-27922

OLRID # 3080

PROP # 2389

POOL # 28509

C-101

C-102 JOK

C102DA

8-11-94  
WTP

10/11/94

Cement Bond Log  
1100' - 3150'

Dual Lat.  
1190' - 3185'

Spectralog  
1190' - 3168'

Comp. Neutron  
Surf - 3193'