

Submit to Appropriate  
District Office  
State Lease - 6 copies  
Fee Lease - 5 copies

State of New Mexico  
Energy, Minerals and Natural Resources Department

Form C-101  
Revised 1-1-89

DISTRICT I  
P.O. Box 1980, Hobbs, NM 88240

DISTRICT II  
P.O. Drawer DD, Artesia, NM 88210

DISTRICT III  
1000 Rio Brazos Rd., Aztec, NM 87410

OIL CONSERVATION DIVISION  
P.O. Box 2088  
Santa Fe, New Mexico 87505-0208

API NO. (assigned by OCD on New Wells)

30-015-2810

5. Indicate Type of Lease

STATE ☒

FEE ☐

6. State Oil & Gas Lease No.

B-514

APPLICATION FOR PERMIT TO DRILL, DEEPEN, OR PLUG BACK

1a. Type of Work:

DRILL ☒

RE-ENTER ☐

DEEPEN ☐

PLUG BACK ☐

b. Type of Well:

OIL  
WELL ☒

GAS  
WELL ☐

OTHER ☐

SINGLE  
ZONE ☒

MULTIPLE  
ZONE ☐

7. Lease Name or Unit Agreement Name

GJ West Coop Unit

2. Name of Operator

Mack Energy Corporation

8. Well No.

121

3. Address of Operator

P.O. Box 1359, Artesia, NM 88211-1359

9. Pool name or Wildcat

Grayburg Jackson SR QN GB SA

4. Well Location

Unit Letter F : 1712 Feet From The North Line and 1822 Feet From The West Line

Section 28 Township 17S Range 29E NMPM Eddy County

10. Proposed Depth

4600'

11. Formation

San Andres

12. Rotary or C.T.

Rotary

13. Elevations (Show whether DF, RT, GR, etc.)

3582.5 GR

14. Kind & Status Plug. Bond

Statewide Bond

15. Drilling Contractor

LaRue Drilling

16. Approx. Date Work will start

17. PROPOSED CASING AND CEMENT PROGRAM

SIZE OF HOLE	SIZE OF CASING	WEIGHT PER FOOT	SETTING DEPTH	SACKS OF CEMENT	EST. TOP
17 1/2"	13 3/8"	54.5#	125'	Circulate	
12 1/4"	8 5/8"	24#	800'	Circulate	
7 7/8"	5 1/2"	17#	4600'	Sufficiently attempt to circ.	

Mack Energy proposes to drill to 125', run 13 3/8" casing and cement. Drill to 800', run 8 5/8" casing and cement. Drill to 4600' and test San Andres Zone, run 5 1/2" casing and cement, put on production.

Note: On Production string, a fluid caliber will be run, will figure cement, with 25% excess, attempt to circulate.

Post ID-1  
12-9-94  
Newloc & API

IN ABOVE SPACE DESCRIBE PROPOSED PROGRAM: IF PROPOSAL IS TO DEEPEN OR PLUG BACK, GIVE DATA ON PRESENT PRODUCTIVE ZONE AND PROPOSED NEW PRODUCTIVE ZONE. GIVE BLOWOUT PREVENTER PROGRAM, IF ANY.

I hereby certify that the information above is true and complete to the best of my knowledge and belief.

SIGNATURE

Crissa D. Carter

TITLE Production Clerk

DATE

12-5-94

TYPE OR PRINT NAME

Crissa D. Carter

TELEPHONE NO.

748-1288

(This space for State Use)

SUPERVISOR, DISTRICT II

DEC 12 1994

APPROVED BY

TITLE

DATE

CONDITIONS OF APPROVAL, IF ANY:

Submit to Appropriate  
District Office  
State Lease - 4 copies  
Fee Lease - 3 copies

State of New Mexico  
Energy, Minerals and Natural Resources Department

Form C-102  
Revised 1-1-89

OIL CONSERVATION DIVISION

**DISTRICT I**  
P.O. Box 1980, Hobbs, NM 88240

P.O. Box 2088

Santa Fe, New Mexico 87504-2088

**DISTRICT II**  
P.O. Drawer DD, Artesia, NM 88210

**DISTRICT III**  
1000 Rio Brazos Ed., Artesia, NM 87410

WELL LOCATION AND ACREAGE DEDICATION PLAT

All Distances must be from the outer boundaries of the section

Operator MACK ENERGY			Lease G.J. WEST		Well No. 121
Unit Letter F	Section 28	Township 17 SOUTH	Range 29 EAST	NMPM	County EDDY
Actual Footage Location of Well: 1712 feet from the NORTH line and 1822 feet from the WEST line					
Ground Level Elev. 3582.5'	Producing Formation San Andres		Pool Grayburg Jackson SR QN GB SA		Dedicated Acreage: 40 Acres

- Outline the acreage dedicated to the subject well by colored pencil or hachure marks on the plat below.
  - If more than one lease is dedicated to the well, outline each and identify the ownership thereof (both as to working interest and royalty).
  - If more than one lease of different ownership is dedicated to the well, have the interest of all owners been consolidated by communitization, unitization, force-pooling, etc.?  
☐ Yes ☐ No If answer is "yes" type of consolidation \_\_\_\_\_
- If answer is "no" list of owners and tract descriptions which have actually been consolidated. (Use reverse side of this form necessary.) \_\_\_\_\_
- No allowable will be assigned to the well unit all interests have been consolidated (by communitization, unitization, forced-pooling, otherwise) or until a non-standard unit, eliminating such interest, has been approved by the Division.

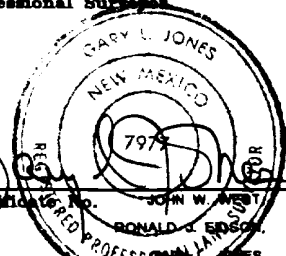
OPERATOR CERTIFICATION

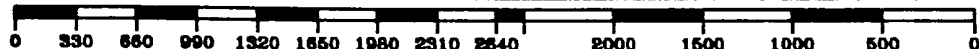
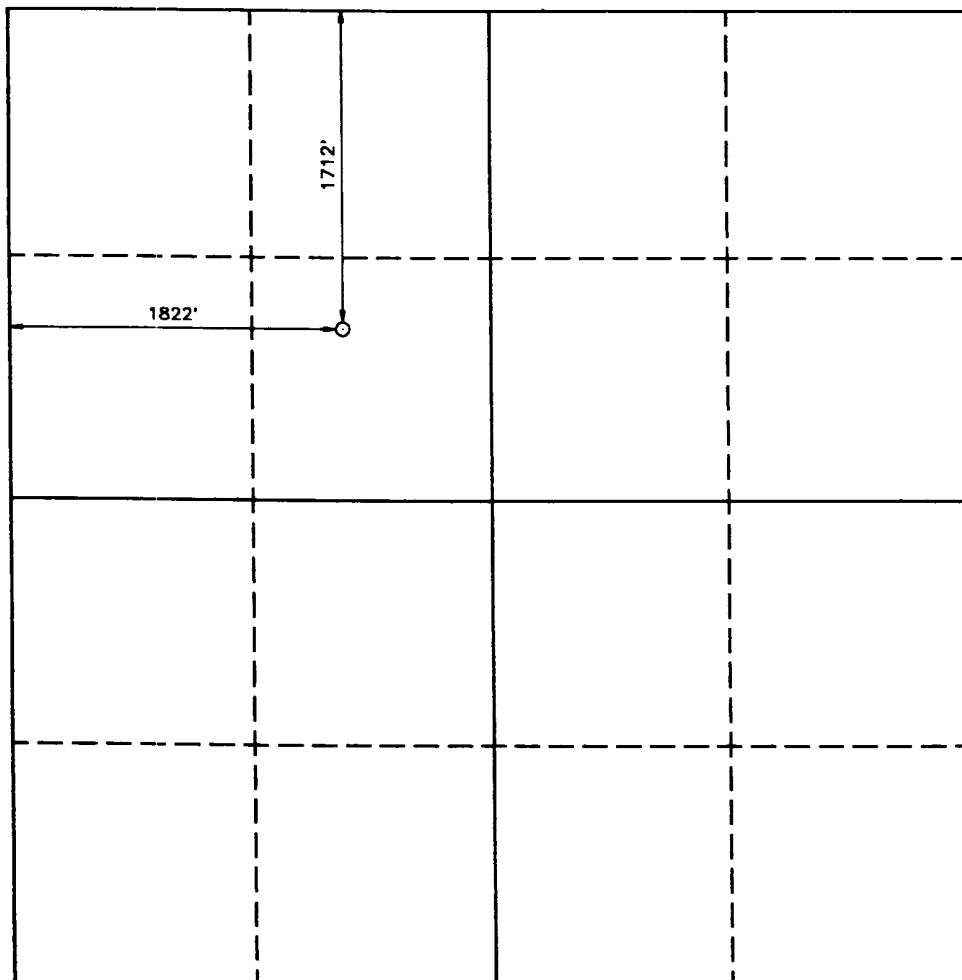
I hereby certify that the information contained herein is true and complete to the best of my knowledge and belief.

Signature  
*Crissa D. Carter*  
Printed Name  
Crissa D. Carter  
Position  
Production Clerk  
Company  
Mack Energy Corp.  
Date  
12-5-94

SURVEYOR CERTIFICATION

I hereby certify that the well location shown on this plat was plotted from field notes of actual surveys made by me or under my supervision, and that the same is true and correct to the best of my knowledge and belief.

Date Surveyed  
NOVEMBER 17, 1993  
Signature & Seal of  
Professional Surveyor  
  
Certificate No. 876  
JOHN W. WEST  
RONALD J. EIDSON, 3239  
JAMES, 7977  
93-11-2527



30-015-28210

OGIP 13837

PROP 6104

POOI 2109

**Oxford<sup>®</sup>**

ESSELTE

MADE IN U.S.A.

NO. R753 1/3

• •

• •

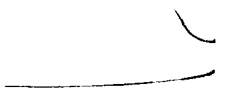
March 8, 1995

DLL

740-5570

Dual spaced Neutron

2001-5568



Cool Tops/B6A  
 BX' - 8100p  
 TRURS - 1732p  
 Gouan - 1732p  
 Chuburg - 2126  
 W. Hark - 2436  
 L. Hark - 2566  
 Glorieta - 3938