

Submit to Appropriate
District Office
State Lease - 4 copies
Fee Lease - 3 copies

State of New Mexico
Energy, Minerals and Natural Resources Department

Form C-102
Revised 1-1-89

OIL CONSERVATION DIVISION

DISTRICT I
P.O. Box 1980, Hobbs, NM 88240

P.O. Box 2088

Santa Fe, New Mexico 87504-2088

DISTRICT II
P.O. Drawer DD, Artesia, NM 88210

DISTRICT III
1000 Rio Brazos Rd., Artec, NM 87410

WELL LOCATION AND ACREAGE DEDICATION PLAT

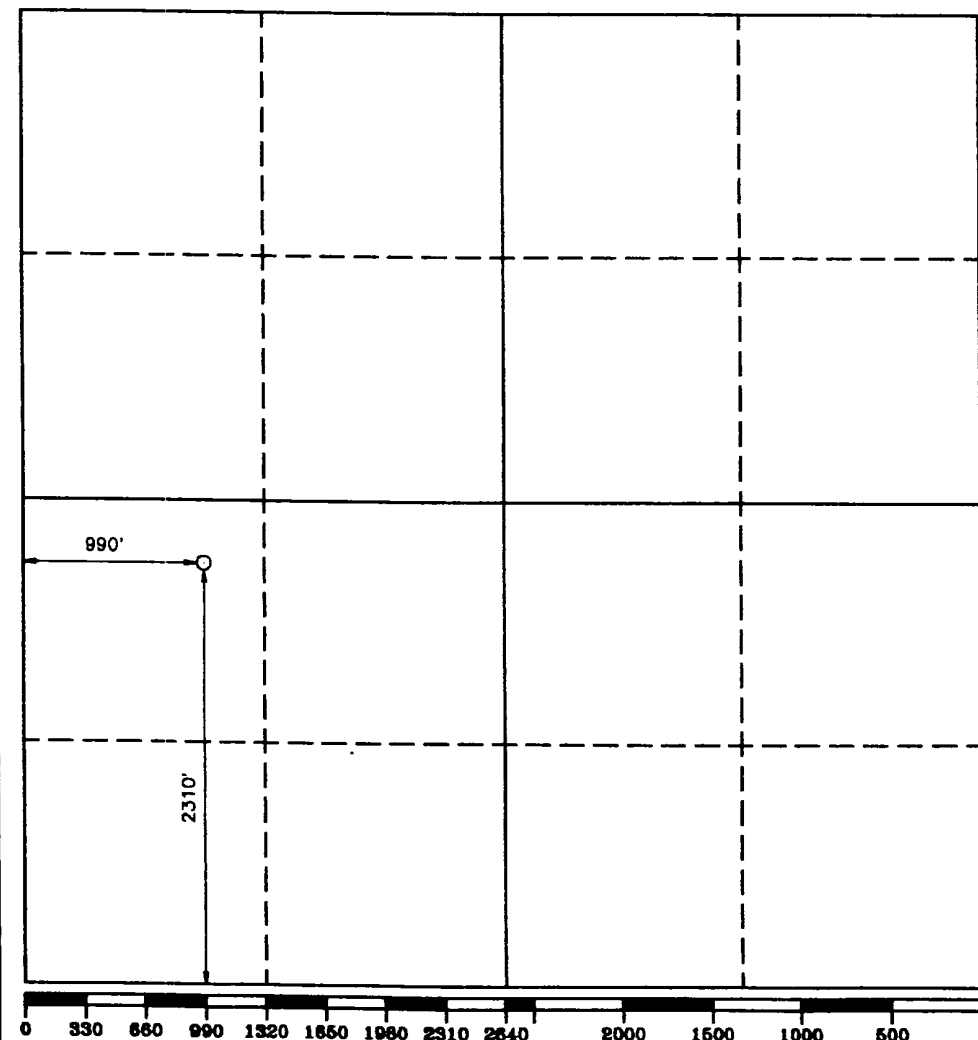
All Distances must be from the outer boundaries of the section

Operator MACK ENERGY			Lease G.J. WEST		Well No. 122
Unit Letter L	Section 28	Township 17 SOUTH	Range 29 EAST	County NMPM	EDDY
Actual Footage Location of Well: 2310 feet from the SOUTH line and 990 feet from the WEST line					
Ground Level Elev. 3575.8'	Producing Formation San Andres	Pool Grayburg Jackson SR QN GB SA			Dedicated Acreage: 40 Acres

1. Outline the acreage dedicated to the subject well by colored pencil or hachure marks on the plat below.
2. If more than one lease is dedicated to the well, outline each and identify the ownership thereof (both as to working interest and royalty).
3. If more than one lease of different ownership is dedicated to the well, have the interest of all owners been consolidated by communitization, unitization, force-pooling, etc.?
☐ Yes ☐ No If answer is "yes" type of consolidation _____

If answer is "no" list of owners and tract descriptions which have actually been consolidated. (Use reverse side of this form necessary.)

No allowable will be assigned to the well unit all interests have been consolidated (by communitization, unitization, forced-pooling, otherwise) or until a non-standard unit, eliminating such interest, has been approved by the Division.



OPERATOR CERTIFICATION

I hereby certify the the information contained herein is true and complete to the best of my knowledge and belief.

Signature
Crissa D. Carter
Printed Name
Crissa D. Carter
Position
Production Clerk
Company
Mack Energy Corp.
Date
12-23-94

SURVEYOR CERTIFICATION

I hereby certify that the well location shown on this plat was plotted from field notes of actual surveys made by me or under my supervision, and that the same is true and correct to the best of my knowledge and belief.

Date Surveyed
NOVEMBER 17, 1993
Signature & Seal of Professional Surveyor

Certificate No. JOHN M. WEST, 676
RONALD E. JONES, 3239
JERRY L. JONES, 7877
95-14-2328

30-015-28265

DATE 2837

Page 6104

28509

Oxford[®]

ESSELTE

MADE IN U.S.A.

NO. R753 1/3

• •

• •

March 8, 1995
Talarlog Micro-SFL

814-5498
Spectral Density Dual
Spaced Neutron Log
814-5498

Seal Tops per 136A

Grayburg - 2140
San Andres - 2470
Lexington Sand - 2594
Glenaca - 3954