

NM OIL CONS. COMMISSION
DRAWL DD
ARTESIA, NM 88210
UNITED STATES
DEPARTMENT OF THE INTERIOR
BUREAU OF LAND MANAGEMENT

CONTACT DIVISION
OFFICE NUMBER
OF COPIES REQUIRED
(Other instructions on
reverse side)

API # 30-015-28313

BLM Roswell District
Modified Form No.
NMO60-3160-2

chf

APPLICATION FOR PERMIT TO DRILL, DEEPEN, OR PLUG BACK

1a. TYPE OF WORK

DRILL ☒

DEEPEN ☐

PLUG BACK ☐

b. TYPE OF WELL

OIL
WELL ☒

GAS
WELL ☐

OTHER ☐

SINGLE
ZONE ☐

MULTIPLE
ZONE ☐

2. NAME OF OPERATOR

Marbob Energy Corporation

14049

3a. Area Code & Phone No.

505-748-3303

3. ADDRESS OF OPERATOR

P. O. Drawer 217, Artesia, NM 88210

4. LOCATION OF WELL (Report location clearly and in accordance with any State requirements.)*

At surface

1195 FSL 1345 FEL

At proposed prod. zone
SAME

Non-
Standard
Location ... Unit (C)

... SUBJECT TO
LIKE APPROVAL
BY STATE

14. DISTANCE IN MILES AND DIRECTION FROM NEAREST TOWN OR POST OFFICE*

20 AIR MILES EAST OF ARTESIA, NM

10. DISTANCE FROM PROPOSED*

LOCATION TO NEAREST

PROPERTY OR LEASE LINE, FT.

(Also to nearest drlg. unit line, if any)

1195'

18. DISTANCE FROM PROPOSED LOCATION*

TO NEAREST WELL, DRILLING, COMPLETED,

OR APPLIED FOR, ON THIS LEASE, FT.

600'

16. NO. OF ACRES IN LEASE

160

17. NO. OF ACRES ASSIGNED
TO THIS WELL

40

19. PROPOSED DEPTH

3250'

20. ROTARY OR CABLE TOOLS

ROTARY

21. ELEVATIONS (Show whether DF, RT, GR, etc.)

3640.1 GR

22. APPROX. DATE WORK WILL START*

APRIL, 1995

PROPOSED CASING AND CEMENTING PROGRAM

HOLE SIZE	CASING SIZE	WEIGHT/FOOT	GRADE	THREAD TYPE	SETTING DEPTH	QUANTITY OF CEMENT
12 1/4"	8 5/8"	24#	J-55	LT&C	350'	300 SX, CIRC.
7 7/8"	5 1/2"	17#	J-55	LT&C	3250'	1100 SX (TIE BACK)

Pay zone will be selectively perforation & stimulated
as needed for optimum production.

Attached are: 1. Location & Acreage Dedication Plat
2. Supplemental Drilling Data
3. Surface Use Plan

NOTE: This A.P.D. was originally approved in 1985. All appropriate paperwork was filed at that time. Also, this well was approved for non-standard location by the OCD Administrative Order NSL-2184. The location already exists with no expansion to the pad; therefore, there is no need for additional archeological surveying since a survey was conducted prior to the location being built.

IN ABOVE SPACE DESCRIBE PROPOSED PROGRAM: If proposal is to deepen or plug back, give data on present productive zone and proposed new productive zone. If proposal is to drill or deepen directionally, give pertinent data on subsurface locations and measured and true vertical depths. Give blowout preventer program, if any.

24.

SIGNED

Rhonda Nelson

TITLE Production Clerk

DATE 10/13/94

(This space for Federal or State office use)

PERMIT NO.

APPROVAL DATE

APPROVED BY (ORIG. SGD.) RICHARD L. MANIUS

TITLE AREA MANAGER

CONDITIONS OF APPROVAL, IF ANY:

1-17-95
APPROVAL SUBJECT TO
GENERAL REQUIREMENTS AND
SPECIAL STIPULATIONS
ATTACHED

*See Instructions On Reverse Side

NEW MEXICO OIL CONSERVATION COMMISSION
WELL LOCATION AND ACREAGE DEDICATION PLAT

Form C-102
 Supersedes C-128
 Effective 1-1-65

All distances must be from the outer boundaries of the Section

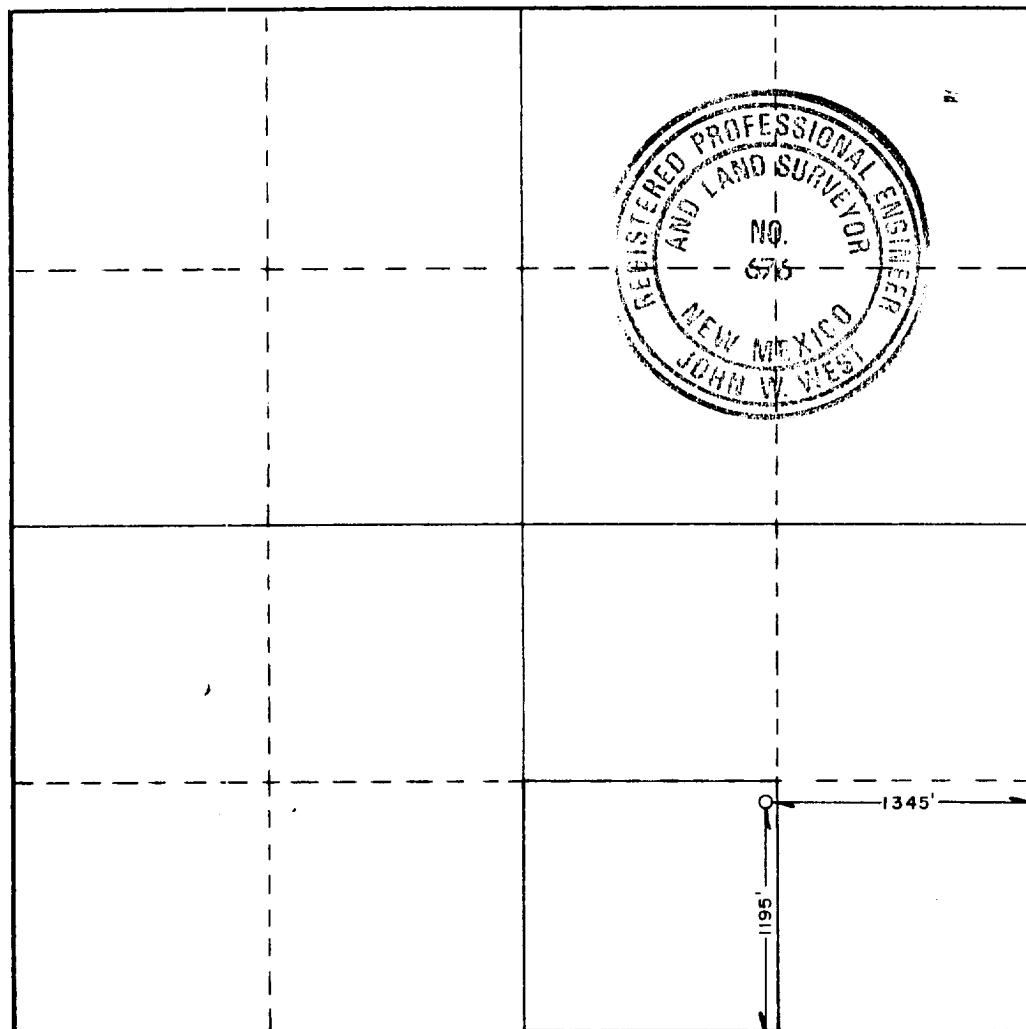
Operator MARBBOB ENERGY CORP.			Lease BOYD DODD		Well No. 8
Unit Letter 0	Section 11	Township 17 SOUTH	Range 29 EAST	County EDDY	
Actual Footage Location of Well: 1195 feet from the SOUTH line and 1345 feet from the EAST line					
Ground Level Elev. 3640.1'	Producing Formation San Andres	Pool Grbg Jackson SR Q Gb SA		Dedicated Acreage: 40 Acres	

1. Outline the acreage dedicated to the subject well by colored pencil or hatchure marks on the plat below.
2. If more than one lease is dedicated to the well, outline each and identify the ownership thereof (both as to working interest and royalty).
3. If more than one lease of different ownership is dedicated to the well, have the interests of all owners been consolidated by communitization, unitization, force-pooling, etc?

☐ Yes ☐ No If answer is "yes," type of consolidation _____

If answer is "no," list the owners and tract descriptions which have actually been consolidated. (Use reverse side of this form if necessary.) _____

No allowable will be assigned to the well until all interests have been consolidated (by communitization, unitization, forced-pooling, or otherwise) or until a non-standard unit, eliminating such interests, has been approved by the Commission.



CERTIFICATION

I hereby certify that the information contained herein is true and complete to the best of my knowledge and belief.

Rhonda Nelson

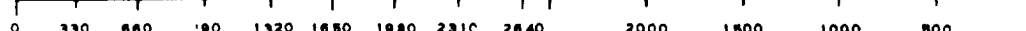
Name
RHONDA NELSON
 Position
Production Clerk
 Company
Marbob Energy Corporation
 Date
OCTOBER 14, 1994

I hereby certify that the well location shown on this plat was plotted from field notes of actual surveys made by me or under my supervision, and that the same is true and correct to the best of my knowledge and belief.

Date Surveyed
NOVEMBER 4, 1985
 Registered Professional Engineer and/or Land Surveyor

John W. West

Certificate No. **JOHN W. WEST, 676**
RONALD J. EIDSON, 3239



Attachment to Exhibit A
NOTES REGARDING THE BLOWOUT PREVENTERS

1. Drilling nipple to be so constructed that it can be removed without use of a welder through rotary table opening, with minimum I.D. equal to preventer bore.
2. Wear ring to be properly installed in head.
3. Blow out preventer and all fittings must be in good condition, 3000 psi W.P. minimum.
4. All fittings to be flanged.
5. Safety valve must be available on rig floor at all times with proper connections, valve to be full bore 3000 psi W.P. minimum.
6. All choke and fill lines to be securely anchored, especially ends of choke lines.
7. Equipment through which bit must pass shall be at least as large as the diameter of the casing being drilled through.
8. Kelly cock on kelly.
9. Extension wrenches and hand wheels to be properly installed.
10. Blow out preventer control to be located as close to driller's position as feasible.
11. Blow out preventer closing equipment to include minimum 40 gallon accumulator, two independent sources of pump power on each closing unit installation, and meet all API specifications.

EXHIBIT #1

B O P & CHOKE MANIFOLD

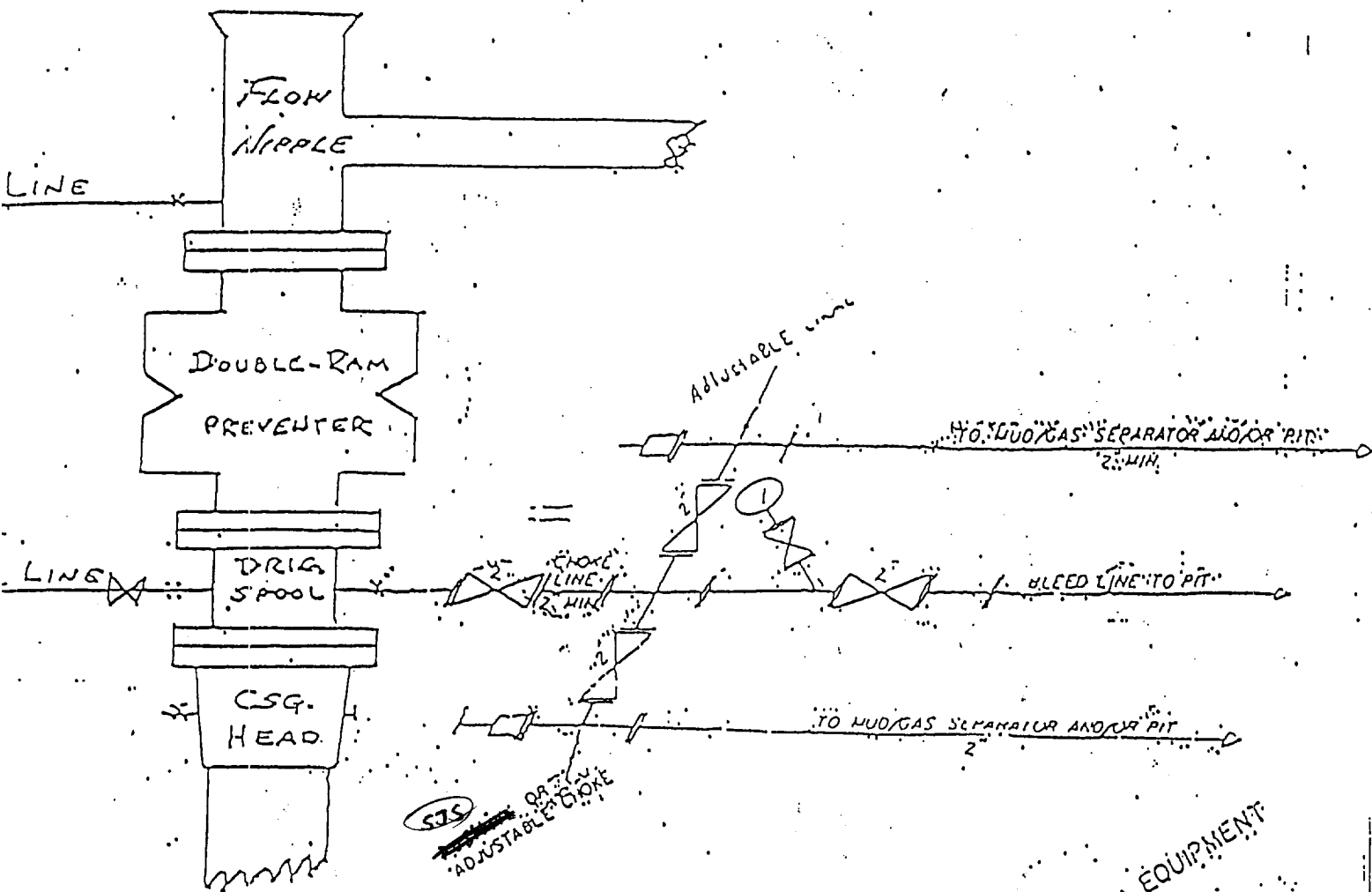
10"/900 Cameron SS Space Saver
3000# Working Pressure
3,000# Working Pressure Choke Manifold

RECEIVED

Nov 7 8 57 AM '94

CAMP
AREA

ONE
CRS



MARBOB ENERGY CORPORATION

Boyd Dodd Federal No. 8
1195' FSL 1345' FEL
Sec. 11-T17S-R29E
Eddy County, New Mexico

2 1/4\"/>