

UNITED STATES
DEPARTMENT OF THE INTERIOR
BUREAU OF LAND MANAGEMENT

APPLICATION FOR PERMIT TO DRILL, DEEPEN, OR PLUG BACK

1a. TYPE OF WORK DRILL <input checked="" type="checkbox"/> DEEPEN <input type="checkbox"/> PLUG BACK <input type="checkbox"/>		5. LEASE DESIGNATION AND SERIAL NO. LC-028793A	
b. TYPE OF WELL OIL WELL <input checked="" type="checkbox"/> GAS WELL <input type="checkbox"/> OTHER <input type="checkbox"/>		6. IF INDIAN, ALLOTTEE OR TRIBE NAME	
2. NAME OF OPERATOR Marbob Energy Corporation 14049		7. UNIT AGREEMENT NAME	
3. ADDRESS OF OPERATOR P. O. Drawer 217, Artesia, NM 88210		8. FARM OR LEASE NAME BURCH AA FEDERAL 13084	
4. LOCATION OF WELL (Report location clearly and in accordance with any State requirements.) At surface 1345 FNL 1980 FEL UNORTHODOX LOCATION: Unit (G) At proposed prod. zone SAME		9. WELL NO. 42	
14. DISTANCE IN MILES AND DIRECTION FROM NEAREST TOWN OR POST OFFICE 24 MILES EAST OF ARTESIA ON U.S. 82		10. FIELD AND POOL, OR WILDCAT GRBG JACKSON SR Q GRBG SA 28509	
16. DISTANCE FROM PROPOSED LOCATION TO NEAREST PROPERTY OR LEASE LINE, FT. (Also to nearest drlg. unit line, if any) 1345'		11. SEC., T. R., M., OR BLK. AND SURVEY OR AREA SEC. 19-T17S-R30E	
18. DISTANCE FROM PROPOSED LOCATION TO NEAREST WELL, DRILLING, COMPLETED, OR APPLIED FOR, ON THIS LEASE, FT. 635'		12. COUNTY OR PARISH EDDY	
20. PROPOSED DEPTH 5000'		13. STATE NM	
21. ELEVATIONS (Show whether DF, RT, GR, etc.) 3635' GR		17. NO. OF ACRES ASSIGNED TO THIS WELL 40	
22. APPROX. DATE WORK WILL START 2/1/95		20. ROTARY OR CABLE TOOLS ROTARY	

PROPOSED CASING AND CEMENTING PROGRAM

HOLE SIZE	CASING SIZE	WEIGHT/FOOT	GRADE	THREAD TYPE	SETTING DEPTH	QUANTITY OF CEMENT
12 1/4"	8 5/8"	24#	J-55	LT&C	350'	300 CIRCULATE
7 7/8"	5 1/2"	17#	J-55	LT&C	5000'	1100 SX

PAY ZONE WILL BE SELECTIVELY PERFORATED AND STIMULATED AS NEEDED FOR OPTIMUM PRODUCTION.

ATTACHED ARE: 1. LOCATION & ACRES DEDICATION PLAT
2. SUPPLEMENTAL DRILLING DATA
3. SURFACE USE PLAN

Part ID-1
2-3-95
Marbob & API

Copy of plat to
Bureau of Land Management and
Bureau of Reclamation
Attached

IN ABOVE SPACE DESCRIBE PROPOSED PROGRAM: If proposal is to deepen or plug back, give data on present productive zone and proposed new productive zone. If proposal is to drill or deepen directionally, give pertinent data on subsurface locations and measured and true vertical depths. Give blowout preventer program, if any.

24. SIGNER Rhonda Nelson TITLE Production Clerk DATE 12/21/94

(This space for Federal or State office use)

PERMIT NO. 151 Yolanda Vega APPROVAL DATE 1/31/95
APPROVED BY Yolanda Vega TITLE AREA MANAGER
CONDITIONS OF APPROVAL, IF ANY:

NSL

*See Instructions On Reverse Side

DISTRICT I
P.O. Box 1980, Hobbs, NM 88240

DISTRICT II
P.O. Drawer DD, Artesia, NM 88210

DISTRICT III
1000 Rio Brazos Rd., Aztec, NM 87410

State of New Mexico
Energy, Minerals and Natural Resources Department

Form C-102
Revised February 10, 1994
Instruction on back
Submit to Appropriate District Office
State Lease - 4 Copies
Fee Lease - 3 Copies

OIL CONSERVATION DIVISION

P.O. Box 2088
Santa Fe, New Mexico 87504-2088

☐ AMENDED REPORT

WELL LOCATION AND ACREAGE DEDICATION PLAT

API Number 30-015-28332	Pool Code 28509	Pool Name GRBG JACKSON SR Q GRBG SA
Property Code 28509	Property Name BURCH AA FEDERAL	Well Number 42
OGRID No. 014049	Operator Name MARBOB ENERGY CORP.	Elevation 3635'

Surface Location

UL or lot No.	Section	Township	Range	Lot Idn	Feet from the	North/South line	Feet from the	East/West line	County
G	19	17S	30E		1345	NORTH	1980	EAST	EDDY

Bottom Hole Location If Different From Surface

UL or lot No.	Section	Township	Range	Lot Idn	Feet from the	North/South line	Feet from the	East/West line	County
Dedicated Acres	Joint or Infill	Consolidation Code	Order No.						

NO ALLOWABLE WILL BE ASSIGNED TO THIS COMPLETION UNTIL ALL INTERESTS HAVE BEEN CONSOLIDATED
OR A NON-STANDARD UNIT HAS BEEN APPROVED BY THE DIVISION

LOT 1 37.43									
LOT 2 37.43									
LOT 3 37.41									
LOT 4 37.41									

OPERATOR CERTIFICATION

I hereby certify the the information contained herein is true and complete to the best of my knowledge and belief.

Rhonda Nelson
Signature

RHONDA NELSON
Printed Name

PRODUCTION CLERK
Title

12/21/94
Date

SURVEYOR CERTIFICATION

I hereby certify that the well location shown on this plat was plotted from field notes of actual surveys made by me or under my supervision, and that the same is true and correct to the best of my belief.

DECEMBER 5, 1994
Date Surveyed

Signature & Seal of Professional Surveyor
W.C. West
W.C. West, 94571-2051

Certificate No. JOHN W. WEST, 676
RONALD J. EIDSON, 3239

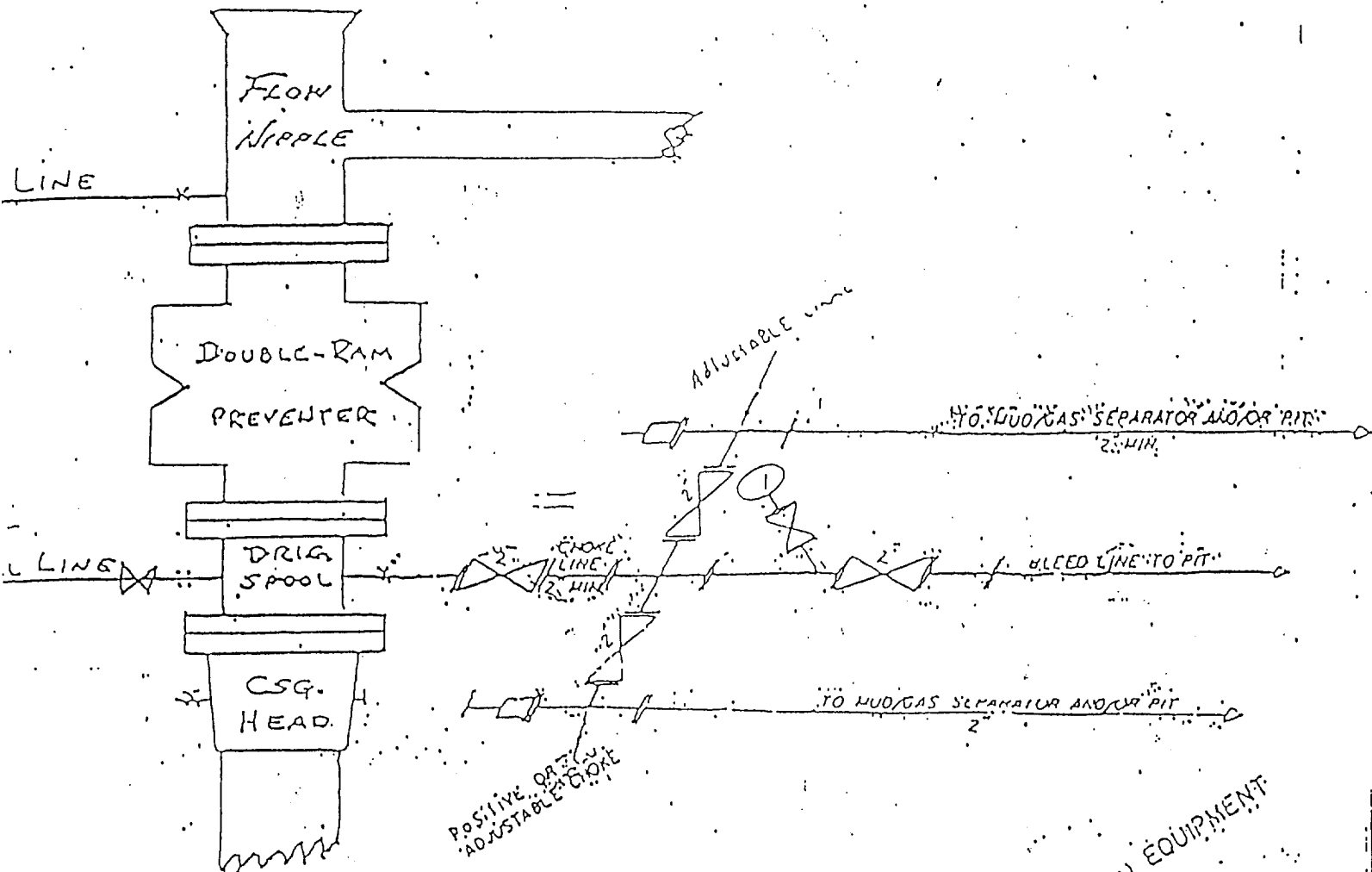
EXHIBIT #1

B O P & CHOKE MANIFOLD

10"/900 Cameron SS Space Saver

3000# Working Pressure

3,000# Working Pressure Choke Manifold



2" CHOKE MANIFOLD EQUIPMENT

Marbob Energy Corporation

Burch AA Federal No. 42

1345' FNL 1980' FEL

Sec. 19, T-17S, R-30E

Eddy County, New Mexico

Exhibit #1