

District I
PO Box 1980, Hobbs, NM 88241-1980
District II
PO Drawer DD, Artesia, NM 88211-0719
District III
1000 Rio Brazos Rd., Aztec, NM 87410
District IV
PO Box 2088, Santa Fe, NM 87504-2088

State of New Mexico
Energy, Minerals & Natural Resources Department

OIL CONSERVATION DIVISION
PO Box 2088
Santa Fe, NM 87504-2088

Form C-101
Revised February 10, 1994
Instructions on back
Submit to Appropriate District Office
State Lease - 6 Copies
Fee Lease - 5 Copies

☐ AMENDED REPORT

APPLICATION FOR PERMIT TO DRILL, RE-ENTER, DEEPEN, PLUGBACK, OR ADD A ZONE

Operator Name and Address: Mack Energy Corporation P.O. Box 960 Artesia, NM 88211-0960		OGRID Number 013837
Property Name G J West Coop UT		API Number 30-015-28513
Property Code 006104	Well No. 131	

7 Surface Location

UL or lot no.	Section	Township	Range	Lot Ida	Feet from the	North/South line	Feet from the	East/West line	County
0	21	17S	29E		710	South	2380	East	Eddy

8 Proposed Bottom Hole Location If Different From Surface

UL or lot no.	Section	Township	Range	Lot Ida	Feet from the	North/South line	Feet from the	East/West line	County
Proposed Pool 1 Grayburg Jackson 7RVS-QN-GB-SA 28509					Proposed Pool 2 Part 7D-1 5-26-95 New Loc. & API				

Work Type Code N	Well Type Code O	Cable/Rotary R	Lease Type Code S	Ground Level Elevation 3569
Multiple No	Proposed Depth 4600'	Formation San Andres	Contractor LaRue Drilling	Spud Date

21 Proposed Casing and Cement Program

Hole Size	Casing Size	Casing weight/foot	Setting Depth	Sacks of Cement	Estimated TOC
17 1/2"	13 3/8"	54.5#	125'	Circulate	
12 1/4"	8 5/8"	24#	800'	Circulate	
7 7/8"	5 1/2"	17#	4600'	Sufficiently attempt to circ.	

Describe the proposed program. If this application is to DEEPEN or PLUG BACK give the data on the present productive zone and proposed new productive zone. Describe the blowout prevention program, if any. Use additional sheets if necessary.

Mack Energy proposes to drill to 125', run 13 3/8" casing and cement. Drill to 800', run 8 5/8" casing and cement. Drill to 4600' and test San Andres Zone, run 5 1/2" casing and cement. Put on production.

Note: On Production string, a fluid caliber will be run, will figure cement, with 25% excess, attempt to circulate.

RECEIVED

MAY - 9 1995

OIL CON. DIV.
DIST. 2

I hereby certify that the information given above is true and complete to the best of my knowledge and belief. Signature: <u>Crissa D. Carter</u>		OIL CONSERVATION DIVISION	
Printed name: <u>Crissa D. Carter</u>		Approved by: <u>ORIGINAL SIGNED BY TIM W. GUM</u>	
Title: <u>Production Clerk</u>		Title: <u>DISTRICT II SUPERVISOR</u>	
Date: <u>5-8-95</u>		Approval Date: <u>MAY 19 1995</u>	Expiration Date: <u>11-19-95</u>
Phone: <u>(505)748-1288</u>		Conditions of Approval: Attached <input type="checkbox"/>	

NSL-3535 5-17-95

DISTRICT I
P.O. Box 1980, Hobbs, NM 88240

State of New Mexico
Energy, Minerals and Natural Resources Department

Form C-102
Revised February 10, 1994
Instruction on back
Submit to Appropriate District Office
State Lease - 4 Copies
Fee Lease - 3 Copies

DISTRICT II
P.O. Drawer DD, Artesia, NM 88210

DISTRICT III
1000 Rio Brazos Rd., Aztec, NM 87410

DISTRICT IV
PO BOX 2088, SANTA FE, NM 87504-2088

OIL CONSERVATION DIVISION

P.O. Box 2088
Santa Fe, New Mexico 87504-2088

☐ AMENDED REPORT

WELL LOCATION AND ACREAGE DEDICATION PLAT

API Number	Pool Code	Pool Name
	28509	Grayburg Jackson 7RVS-QN-GB-SA
Property Code	Property Name	Well Number
006104	G.J. WEST UNIT	131
OGRID No.	Operator Name	Elevation
013837	MACK ENERGY CORPORATION	3569

Surface Location

UL or lot No.	Section	Township	Range	Lot Idn	Feet from the	North/South line	Feet from the	East/West line	County
0	21	17 S	29 E		710	SOUTH	2380	EAST	EDDY

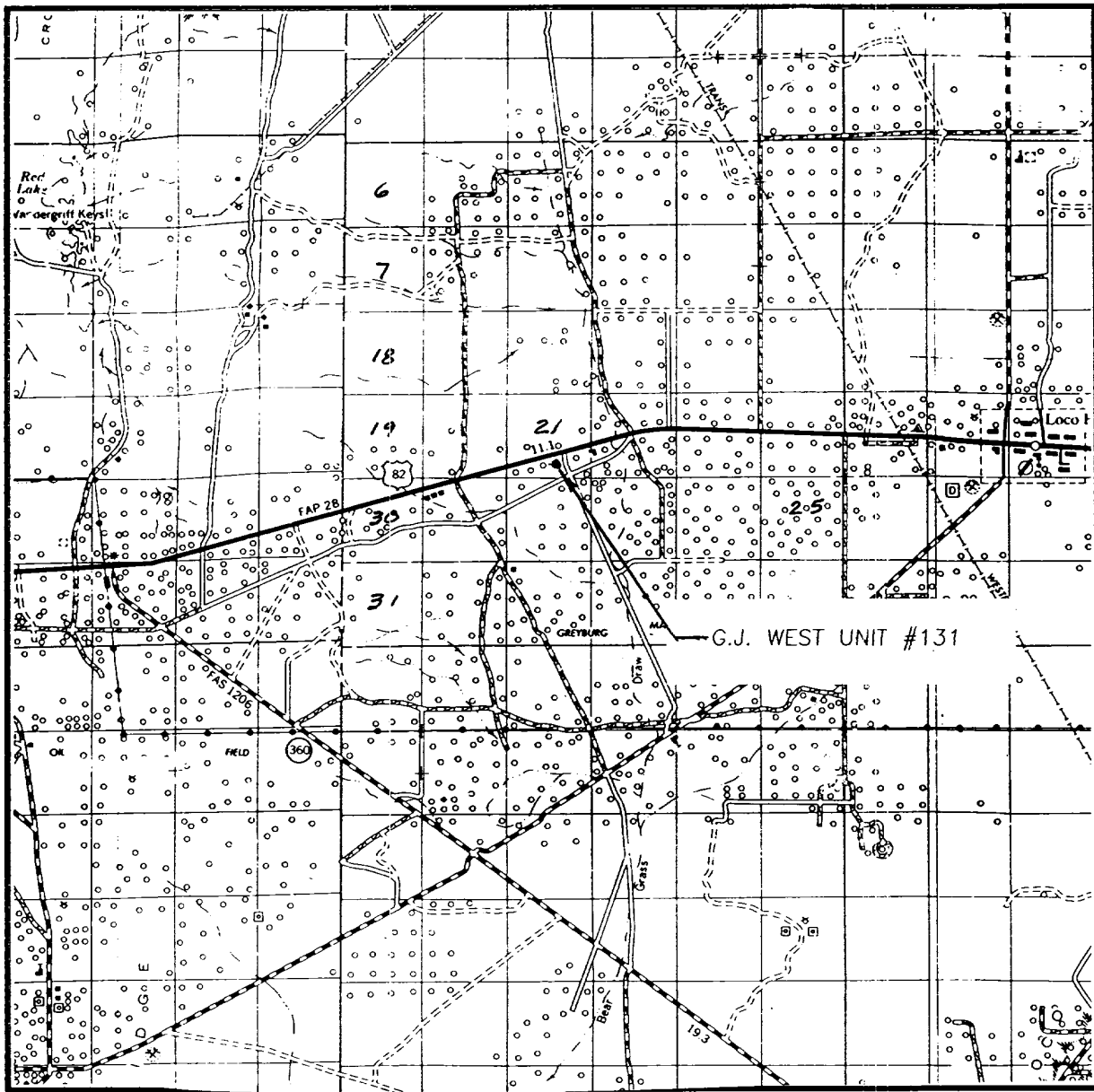
Bottom Hole Location If Different From Surface

UL or lot No.	Section	Township	Range	Lot Idn	Feet from the	North/South line	Feet from the	East/West line	County
Dedicated Acres	Joint or Infill	Consolidation Code	Order No.						
40									

NO ALLOWABLE WILL BE ASSIGNED TO THIS COMPLETION UNTIL ALL INTERESTS HAVE BEEN CONSOLIDATED
OR A NON-STANDARD UNIT HAS BEEN APPROVED BY THE DIVISION

	OPERATOR CERTIFICATION I hereby certify the the information contained herein is true and complete to the best of my knowledge and belief. <u>Crissa D. Carter</u> Signature Crissa D. Carter Printed Name Production Clerk Title 5-8-95 Date
	SURVEYOR CERTIFICATION I hereby certify that the well location shown on this plat was plotted from field notes of actual surveys made by me or under my supervision and that the same is true and correct to the best of my belief. APRIL 25, 1995 Date Surveyed Signature & Seal of Professional Surveyor <u>Ronald J. Eidson</u> 5-02-95 W.D. Num. 95-11-0655
	Certificate No. JOHN W. WEST 676 RONALD J. EIDSON 3239 PROFESSIONAL SURVEYOR 12641

VICINITY MAP



SCALE: 1" = 2 MILES

SEC. 21 TWP. 17-S RGE. 29-E

SURVEY N.M.P.M.

COUNTY EDDY

DESCRIPTION 710' FSL & 2380' FEL

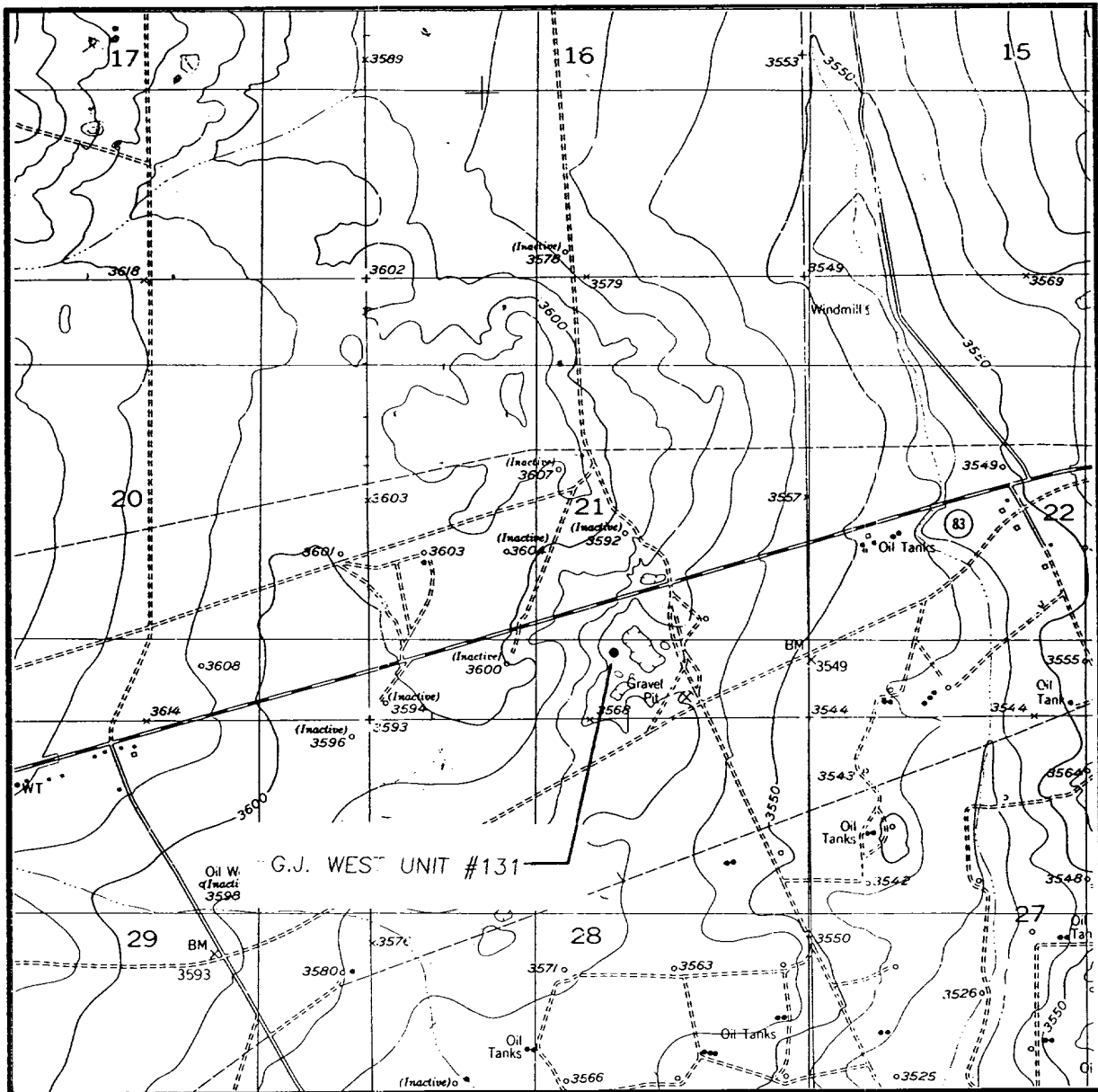
ELEVATION 3569

OPERATOR MACK ENERGY CORPORATION

LEASE G.J. WEST UNIT

JOHN WEST ENGINEERING
HOBBS, NEW MEXICO
(505) 393-3117

LOCATION VERIFICATION MAP



SCALE: 1" = 2000'

CONTOUR INTERVAL - 10'

SEC. 21 TWP. 17-S RGE. 29-E

SURVEY N.M.P.M.

COUNTY EDDY

DESCRIPTION 710' FSL & 2380' FEL

ELEVATION 3569

OPERATOR MACK ENERGY CORPORATION

LEASE G.J. WEST UNIT

U.S.G.S. TOPOGRAPHIC MAP

RED LAKE N.E., N.M.

**JOHN WEST ENGINEERING
HOBBS, NEW MEXICO**

(505) 393-3117

30-015-28513

3/4- 13237

Property- 6.21

Foot- 2

Oxford[®]

✱ ESSELTE

MADE IN U.S.A.

NO. R753 1/3

•

•

•

•

9-29-95

DUAL LAT.

100-5293

Dual Spaced Neutron

100-5293

NSL-3535

Approved 5-17-95

U

U

1 1 p pu/RIA
TX 276 P
RX 276 P
7/18/12
San Antonio 27/12
Houston 27/12