

District I
PO Box 1980, Hobbs, NM 88241-1980
District II
PO Drawer DD, Artesia, NM 88211-0719
District III
1000 Rio Brazos Rd., Aztec, NM 87410
District IV
PO Box 2088, Santa Fe, NM 87504-2088

State of New Mexico
Energy, Minerals & Natural Resources Department

OIL CONSERVATION DIVISION
PO Box 2088
Santa Fe, NM 87504-2088

Form C-101
Revised February 10, 1994
Instructions on back
Submit to Appropriate District Office
State Lease - 6 Copies
Fee Lease - 5 Copies

☐ AMENDED REPORT

APPLICATION FOR PERMIT TO DRILL, RE-ENTER, DEEPEN, PLUGBACK, OR ADD A ZONE

Operator Name and Address: Mack Energy Corporation P.O. Box 960 Artesia, NM 88211-0960		1 OGRID Number 013837
2 Property Code 006104	3 Property Name G J West Coop UT	4 API Number 30 - 015 - 28514
		5 Well No. 133

7 Surface Location

UL or lot no.	Section	Township	Range	Lot Ida	Feet from the	North/South line	Feet from the	East/West line	County
F	28	17S	29E		1829	North	2477	West	Eddy

8 Proposed Bottom Hole Location If Different From Surface

UL or lot no.	Section	Township	Range	Lot Ida	Feet from the	North/South line	Feet from the	East/West line	County
9 Proposed Pool 1 Grayburg Jackson 7RVS-QN-GB-SA 28509					10 Proposed Pool 2 Post ID-1 5-26-95 New-loc + API				

11 Work Type Code N	12 Well Type Code O	13 Cable/Rotary R	14 Lease Type Code S	15 Ground Level Elevation 3575
16 Multiple No	17 Proposed Depth 4600'	18 Formation San Andres	19 Contractor LaRue Drilling	20 Spud Date

21 Proposed Casing and Cement Program

Hole Size	Casing Size	Casing weight/foot	Setting Depth	Sacks of Cement	Estimated TOC
17 1/2"	13 3/8"	54.5#	125'	Circulate	
12 1/4"	8 5/8"	24#	800'	Circulate	
7 7/8"	5 1/2"	17#	4600'	Sufficiently attempt to circ.	

22 Describe the proposed program. If this application is to DEEPEN or PLUG BACK give the data on the present productive zone and proposed new productive zone. Describe the blowout prevention program, if any. Use additional sheets if necessary.

Mack Energy proposes to drill to 125', run 13 3/8" casing and cement.
Drill to 800', run 8 5/8" casing and cement. Drill to 4600' and test
San Andres Zone, run 5 1/2" casing and cement. Put on production.

Note: On Production string, a fluid caliber will be run, will figure
cement, with 25% excess, attempt to circulate.

OIL CON. DIV.

23 I hereby certify that the information given above is true and complete to the best of my knowledge and belief. Signature: <u>Crissa D. Carter</u>		OIL CONSERVATION DIVISION DISTRICT II	
Printed name: Crissa D. Carter		Approved by: ORIGINAL SIGNED BY TIM W. GUM	
Title: Production Clerk		Title: DISTRICT II SUPERVISOR	
Date: 5-8-95		Approval Date: MAY 19 1995	
Phone: (505)748-1288		Expiration Date: 11-19-95	
		Conditions of Approval: Attached <input type="checkbox"/>	

115 - 3535 5-17-95

DISTRICT I
P.O. Box 1980, Hobbs, NM 88240

State of New Mexico
Energy, Minerals and Natural Resources Department

Form C-102
Revised February 10, 1994
Instruction on back
Submit to Appropriate District Office
State Lease - 4 Copies
Fee Lease - 3 Copies

DISTRICT II
P.O. Drawer DD, Artesia, NM 88210

DISTRICT III
1000 Rio Brazos Rd., Aztec, NM 87410

DISTRICT IV
PO BOX 2088, SANTA FE, NM 87504-2088

OIL CONSERVATION DIVISION

P.O. Box 2088
Santa Fe, New Mexico 87504-2088

☐ AMENDED REPORT

WELL LOCATION AND ACREAGE DEDICATION PLAT

API Number 30-015-28514	Pool Code 28509	Pool Name Grayburg Jackson-7RVS-QN-GB-SA
Property Code 006104	Property Name G.J. WEST UNIT	Well Number 133
OGRID No. 013837	Operator Name MACK ENERGY CORPORATION	Elevation 3575

Surface Location

UL or lot No. F	Section 28	Township 17 S	Range 29 E	Lot Idn	Feet from the 1829	North/South line NORTH	Feet from the 2477	East/West line WEST	County EDDY
---------------------------	----------------------	-------------------------	----------------------	---------	------------------------------	----------------------------------	------------------------------	-------------------------------	-----------------------

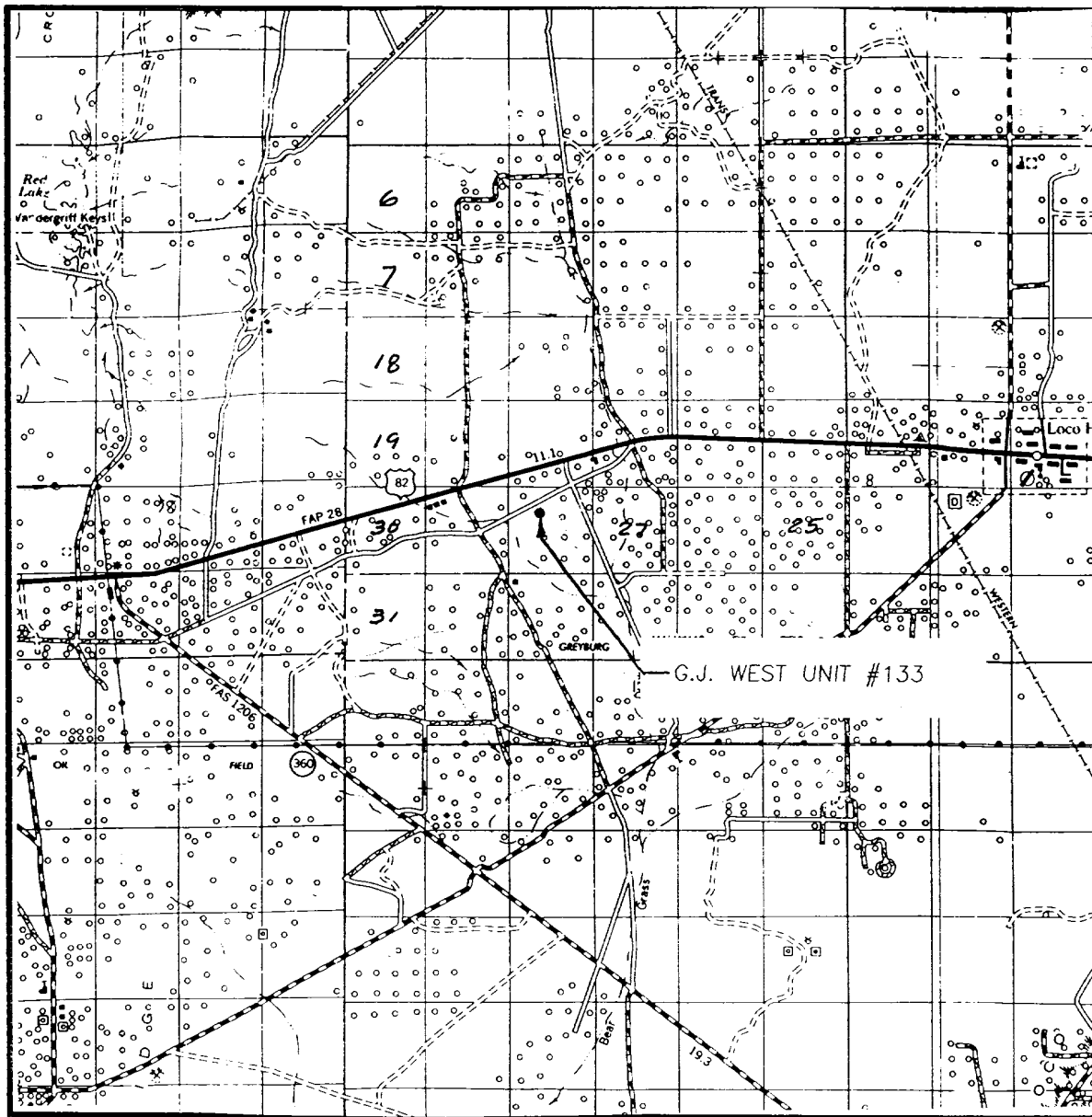
Bottom Hole Location If Different From Surface

UL or lot No.	Section	Township	Range	Lot Idn	Feet from the	North/South line	Feet from the	East/West line	County
Dedicated Acres 40	Joint or Infill	Consolidation Code		Order No.					

NO ALLOWABLE WILL BE ASSIGNED TO THIS COMPLETION UNTIL ALL INTERESTS HAVE BEEN CONSOLIDATED
OR A NON-STANDARD UNIT HAS BEEN APPROVED BY THE DIVISION

	OPERATOR CERTIFICATION I hereby certify the the information contained herein is true and complete to the best of my knowledge and belief. Signature Crissa D. Carter Printed Name Production Clerk Title 5-8-95 Date
	SURVEYOR CERTIFICATION I hereby certify that the well location shown on this plat was plotted from field notes of actual surveys made by me or under my supervision, and that the same is true and correct to the best of my belief. APRIL 25, 1995 Date Surveyed Signature & Seal of Professional Surveyor 5-02-95 W.O. Num. 95-11-0651 Certificate No. JOHN W. WEST 676 RONALD J. EIDSON 3239 GARY EIDSON 1264

VICINITY MAP



SCALE: 1" = 2 MILES

SEC. 28 TWP. 17-S RGE. 29-E

SURVEY N.M.P.M.

COUNTY EDDY

DESCRIPTION 1829' FNL & 2477' FWL

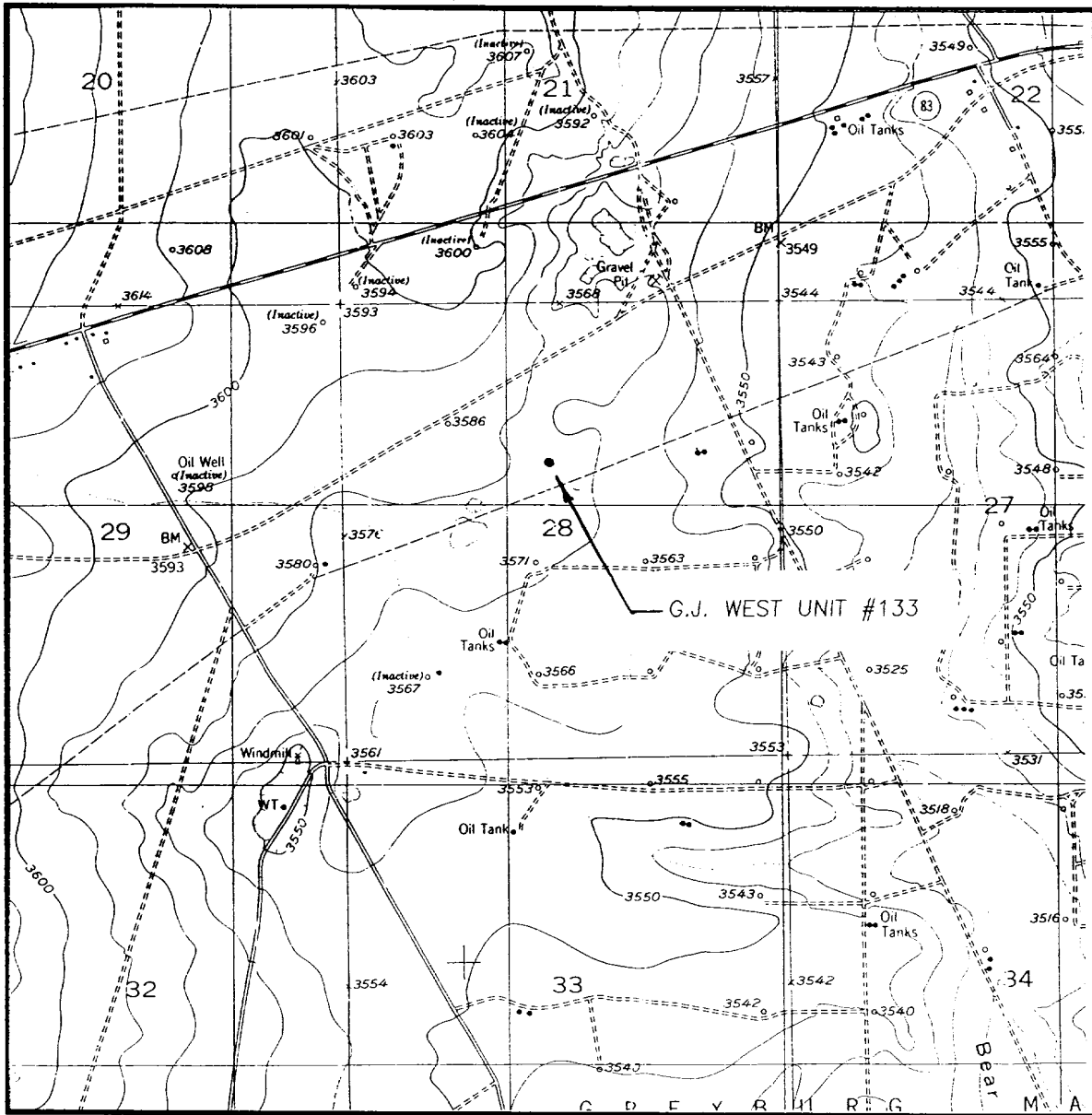
ELEVATION 3575

OPERATOR MACK ENERGY CORPORATION

LEASE G.J. WEST UNIT

JOHN WEST ENGINEERING
HOBBS, NEW MEXICO
(505) 393-3117

LOCATION VERIFICATION MAP



SCALE: 1" = 2000'

CONTOUR INTERVAL - 10'

SEC. 28 TWP. 17-S RGE. 29-E

SURVEY N.M.P.M.

COUNTY EDDY

DESCRIPTION 1829' FNL & 2477' FWL

ELEVATION 3575

OPERATOR MACK ENERGY CORPORATION

LEASE G.J. WEST UNIT

U.S.G.S. TOPOGRAPHIC MAP

RED LAKE N.E., N.M.

**JOHN WEST ENGINEERING
HOBBS, NEW MEXICO**

(505) 393-3117

30-015-28514

Order- 13837

Property- 6104

Pool- 28509

Oxford[®]

✱ ESSELTE

MADE IN U.S.A.

NO. R753 1/3

• •

• •

7-27-95

Dual Spaced Neutron

Dual Lat.

NSL- 3535

Approved 5-17-95

Geol. Tops per B6A

TX - 230 (cp)

BX - 734 (cp)

Grayburg - 2124

San Andres 2423

Louisa SD 2550