

UNITED STATES
DEPARTMENT OF THE INTERIOR
BUREAU OF LAND MANAGEMENT

SUBMIT IN TRIPPLICATE *
(Other Instructions on

OIL CONSERVATION DIVISION
811 S. 1st St.
ARTESIA, NM 88210

FORM APPROVED
OMB NO. 1004-0136
Expires: February 28, 1995

APPLICATION FOR PERMIT TO DRILL OR DEEPEN

1a. TYPE OF WORK

DRILL ☒

DEEPEN ☐

b. TYPE OF WELL

OIL
WELL ☒

GAS
WELL ☐

OTHER ☐

SINGLE
ZONE ☐

MULTIPLE
ZONE ☐

2. NAME OF OPERATOR

The Wiser Oil Company

3. ADDRESS AND TELEPHONE NO.

c/o J. O. Easley, Inc., P. O. Box 1796, Roswell, NM 88201-1796 (505) 623-3750

4. LOCATION OF WELL (Report location clearly and in accordance with any State requirements.)*

At Surface 1294' FSL & 1295' FEL, Unit P

At proposed prod. Zone 1294' FSL & 1295' FEL, Unit P

14. DISTANCE IN MILES AND DIRECTION FROM NEAREST TOWN OR POST OFFICE*

± 5.6 miles southwest of Maljamar, NM

15. DISTANCE FROM PROPOSED *
LOCATION TO NEAREST

PROPERTY OR LEASE LINE, FT.

(Also to nearest drlg. unit line, if any)

1294'

16. NO. OF ACRES IN LEASE

640.00

17. NO. OF ACRES ASSIGNED
TO THIS WELL

40

18. DISTANCE FROM PROPOSED LOCATION *

TO NEAREST WELL, DRILLING, COMPLETED
OR APPLIED FOR, ON THIS LEASE, FT.

896'

19. PROPOSED DEPTH

4800'

20. ROTARY OR CABLE TOOLS

Rotary

21. ELEVATIONS (Show whether DF, RT, GR, etc.)

3869'

Roswell Controlled Water Basin

22. APPROX. DATE WORK WILL START *

9-1-96

23.

PROPOSED CASING AND CEMENTING PROGRAM

SIZE OF HOLE	GRADE, SIZE OF CASING	WEIGHT PER FOOT	SETTING DEPTH	QUANTITY OF CEMENT
12 1/4"	8 5/8" 8RD ST&C J-55	24#	550'	Circulate
7 7/8"	5 1/2" J-55	17#	4800'	Sufficient to bring cmt 100' above 8 5/8" casing shoe.

Duration of Program: Drilling - Nine (9) days

Completion - Thirty (30) days

See attached for complete Drilling Program

EXHIBITS

Exhibit "A": Drilling Program

Exhibit "D": Land Survey Plat

Exhibit "B": H₂S Plan

Exhibit "E": Vicinity Plat

Exhibit "C": Surface Use Plan

Exhibit "F": Existing Well Plat

Approval Subject to
General Requirements and
Special Stipulations
Attached

Exhibit "G": Rig Layout

Exhibit "H": BOP Layout

IN ABOVE SPACE DESCRIBE PROPOSED PROGRAM: If proposal is to deepen, give data on present productive zone and proposed new productive zone. If proposal is to drill or deepen directionally, give pertinent data on subsurface locations and measured and true vertical depths. Give blowout preventer program, if any.

24.

SIGNED

Michael R. Burch

TITLE

Agent for The Wiser Oil Company

DATE

4-30-96

Michael R. Burch, CPL

(This space for Federal or State office use)

PERMIT NO.

APPROVAL DATE

Application approval does not warrant or certify that the applicant holds legal or equitable title to those rights in the subject lease which would entitle the applicant to conduct operations thereon.

CONDITIONS OF APPROVAL, IF ANY:

APPROVED BY

/s/ TIMOTHY J. BURKE

TITLE

Acting Area Manager

DATE

6-5-96

*See Instructions On Reverse Side

Title 18 U.S.C. Section 1001, makes it a crime for any person knowingly and willfully to make to any department or agency of the United States any false, fictitious or fraudulent statements or representations as to any matter within its jurisdiction.

—

DISTRICT I
P. O. Box 1980
Hobbs, NM 88241-1980

State of New Mexico
Energy, Minerals, and Natural Resources Department

EXHIBIT "D"

Form C-102
Revised 02-10-94

Instructions on back

DISTRICT II
P. O. Drawer DD
Artesia, NM 88211-0719

Submit to the Appropriate
District Office
State Lease - 4 copies
Fee Lease - 3 copies

DISTRICT III
1000 Rio Brazos Rd.
Aztec, NM 87410

OIL CONSERVATION DIVISION
P. O. Box 2088
Santa Fe, New Mexico 87504-2088

☐ AMENDED REPORT

DISTRICT IV
P. O. Box 2088
Santa Fe, NM 87507-2088

WELL LOCATION AND ACREAGE DEDICATION PLAT

¹ API Number 30-015-28998		² Pool Code 28509		³ Pool Name Grayburg Jackson 7-Rivers QN GB SA	
⁴ Property Code 017540		⁵ Property Name SKELLY UNIT 'P'			⁶ Well Number 200
⁷ OGRID No. 022922		⁸ Operator Name THE WISER OIL COMPANY			⁹ Elevation 3869'

¹⁰ SURFACE LOCATION

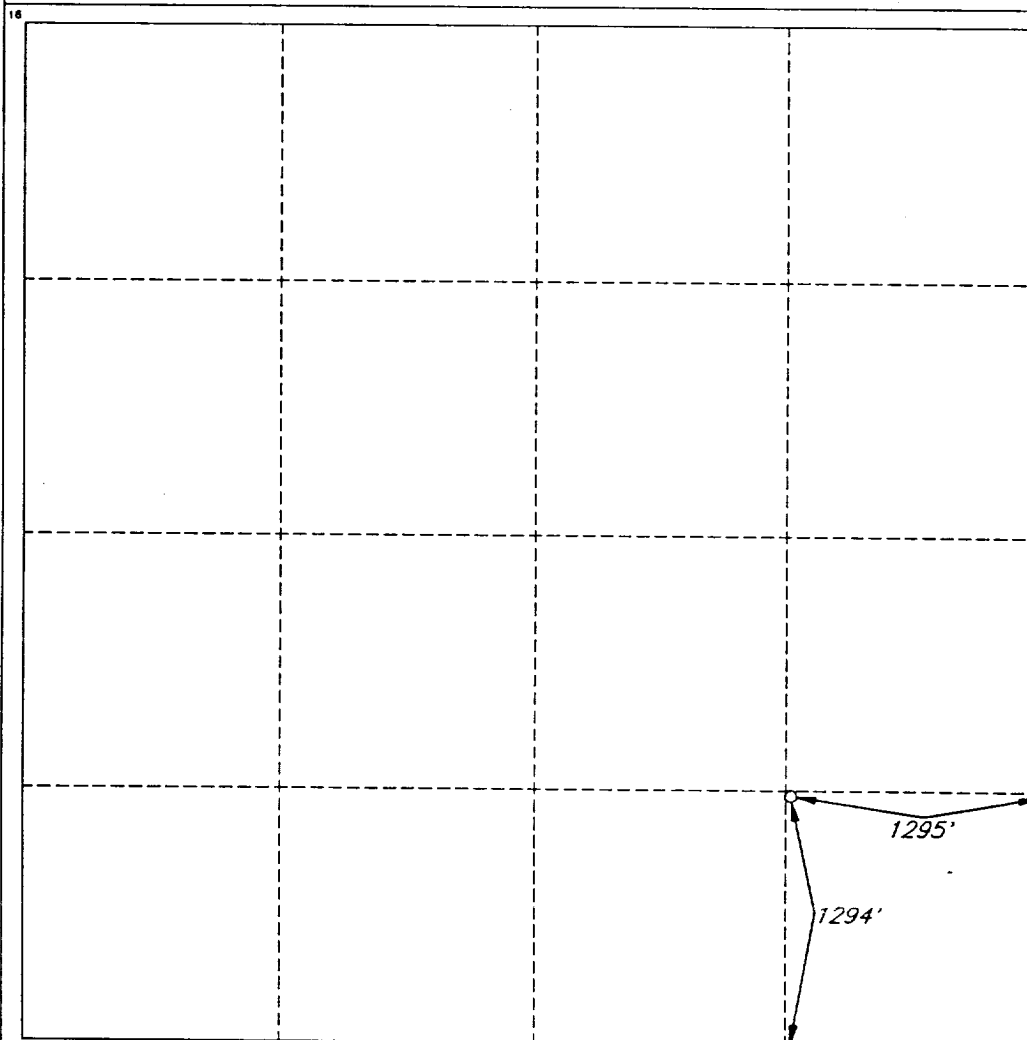
UL or lot no. P	Section 15	Township 17 SOUTH	Range 31 EAST, N.M.P.M.	Lot Ida	Feet from the 1294'	North/South line SOUTH	Feet from the 1295'	East/West line EAST	County EDDY
--------------------	---------------	----------------------	----------------------------	---------	------------------------	---------------------------	------------------------	------------------------	----------------

¹¹ BOTTOM HOLE LOCATION IF DIFFERENT FROM SURFACE

UL or lot no.	Section	Township	Range	Lot Ida	Feet from the	North/South line	Feet from the	East/West line	County
---------------	---------	----------	-------	---------	---------------	------------------	---------------	----------------	--------

¹² Dedicated Acres 40	¹³ Joint or Infill	¹⁴ Consolidation Code	¹⁵ Order No.
-------------------------------------	-------------------------------	----------------------------------	-------------------------

NO ALLOWABLE WELL BE ASSIGNED TO THIS COMPLETION UNTIL ALL INTERESTS HAVE BEEN
CONSOLIDATED OR A NON-STANDARD UNIT HAS BEEN APPROVED BY THE DIVISION



OPERATOR CERTIFICATION

I hereby certify that the information
contained herein is true and complete
to the best of my knowledge and belief.

Signature
Michael R. Burch

Printed Name
Michael R. Burch, CPL

Title
Agent for The Wiser Oil
Company

Date
4-30-96

SURVEYOR CERTIFICATION

I hereby certify that the well
location shown on this plat was
plotted from field notes of actual
surveys made by me or under
my supervision, and that the
same is true and correct to the
best of my belief.

Date of Survey
JANUARY 17, 1996

Signature and Seal of
Professional Surveyor

Certification No.
V. L. BEZNER
JOB # 43-92-LAND 98-SE / JSJ

BOP & CHOKE MANIFOLD

12"/900 Cameron SS Space Saver
 3000# Working Pressure
 3000# Working Pressure Choke Manifold

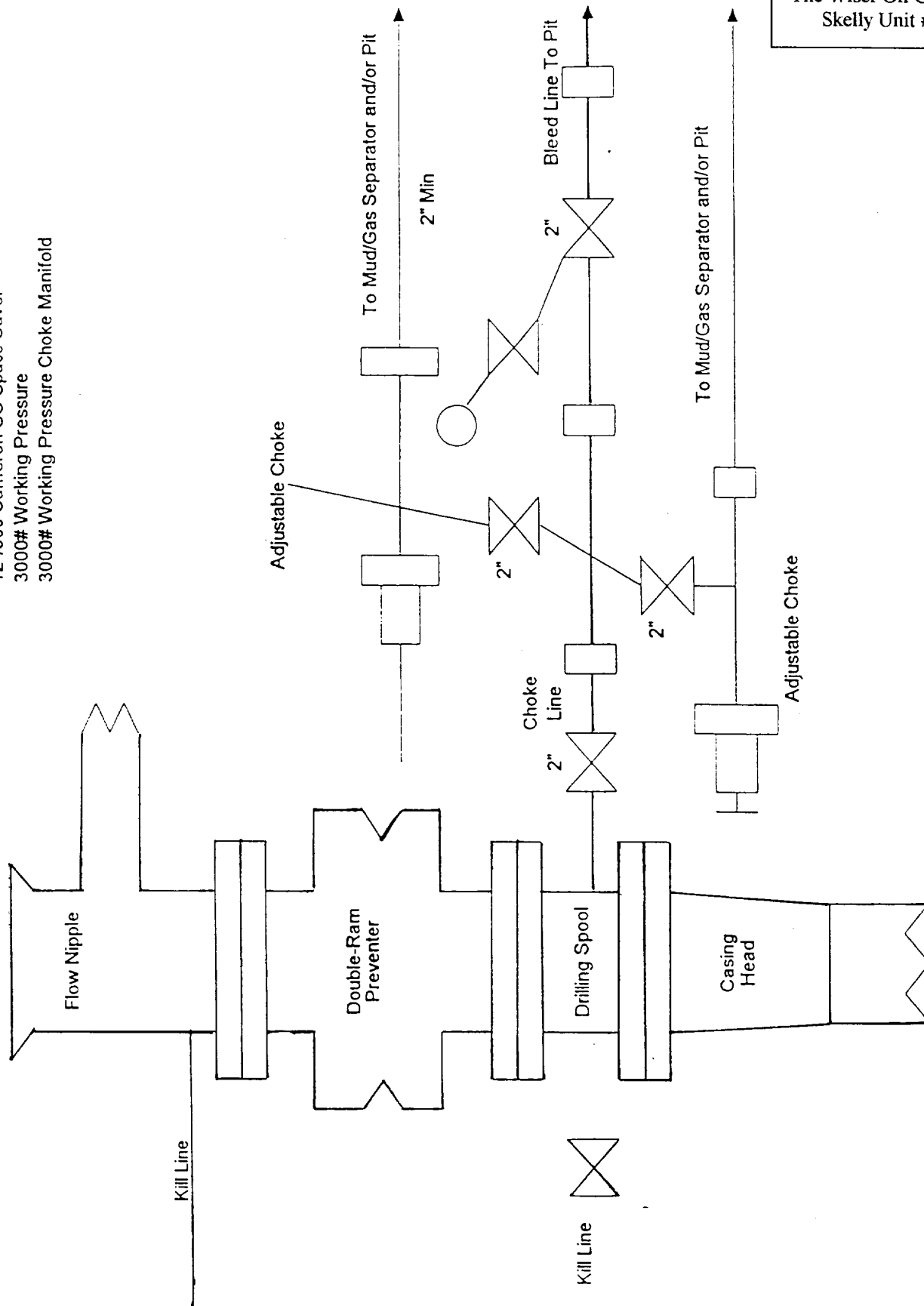


EXHIBIT "H"

BOP LAYOUT

The Wiser Oil Company
 Skelly Unit #200

