

30-015-29058

BLM Roswell District  
Modified Form No.  
NMO60-3160-2

UNITED STATES  
DEPARTMENT OF THE INTERIOR  
BUREAU OF LAND MANAGEMENT

APPLICATION FOR PERMIT TO DRILL, DEEPEN, OR PLUG BACK

1a. TYPE OF WORK

DRILL ☒

DEEPEN ☒

PLUG BACK ☐

b. TYPE OF WELL

OIL  
WELL ☒

GAS  
WELL ☐

OTHER ☐

SINGLE  
ZONE ☐

MULTIPLE  
ZONE ☐

2. NAME OF OPERATOR

Marbob Energy Corporation

3a. Area Code & Phone No.

505-748-3303

3. ADDRESS OF OPERATOR

P. O. Drawer 217, Artesia, NM 88210

4. LOCATION OF WELL (Report location clearly and in accordance with any State requirements.)\*

At surface

1295 FNL 1650 FWL

At proposed prod. zone

same

UNORTHODOX

LOCATION:

Unit C

Subject to

Like Approval

By State

14. DISTANCE IN MILES AND DIRECTION FROM NEAREST TOWN OR POST OFFICE\*

East of Artesia on Hyw 82 approx 28.4 miles

16. DISTANCE FROM PROPOSED\*

LOCATION TO NEAREST  
PROPERTY OR LEASE LINE, FT.  
(Also to nearest drlg. unit line, if any)

1295'

16. NO. OF ACRES IN LEASE

280

17. NO. OF ACRES ASSIGNED  
TO THIS WELL

40

18. DISTANCE FROM PROPOSED LOCATION\*

TO NEAREST WELL, DRILLING, COMPLETED,  
OR APPLIED FOR, ON THIS LEASE, FT.

19. PROPOSED DEPTH

6000'

20. ROTARY OR CABLE TOOLS

Rotary

21. ELEVATIONS (Show whether DF, RT, GR, etc.)

3705.1 GL

22. APPROX. DATE WORK WILL START\*

July 15, 1996

23.

PROPOSED CASING AND CEMENTING PROGRAM

HOLE SIZE	CASING SIZE	WEIGHT/FOOT	GRADE	THREAD TYPE	SETTING DEPTH	QUANTITY OF CEMENT
12 1/4"	8 5/8"	24#	J-55	LT&C	450'	400 <b>CIRCULATE</b>
7 7/8"	5 1/2"	17#	J-55	LT&C	6000'	1100 Sx

Pay zone will be selectively perforated and  
stimulated as needed for optimum production.

Attached are: 1. Location & Acreage Dedication Plat  
2. Supplemental Drilling Data  
3. Surface Use Plan

GENERAL REQUIREMENTS AND  
SPECIAL STIPULATIONS  
ATTACHED

NSL-3718 (CSD)

IN ABOVE SPACE DESCRIBE PROPOSED PROGRAM: If proposal is to deepen or plug back, give data on present productive zone and proposed new productive zone. If proposal is to drill or deepen directionally, give pertinent data on subsurface locations and measured and true vertical depths. Give blowout preventer program, if any.

24.

SIGNED

Phonda Nelson

TITLE Production Clerk

DATE 6/10/96

(This space for Federal or State office use)

PERMIT NO.

APPROVAL DATE

APPROVED BY

/s/ TIMOTHY J. BURKE

TITLE

Acting AREA MANAGER

DATE

JUL 16 1996

CONDITIONS OF APPROVAL, IF ANY:

\*See Instructions On Reverse Side

Submit to Appropriate  
District Office  
State Lease - 4 copies  
Fee Lease - 3 copies

State of New Mexico  
Energy, Minerals and Natural Resources Department

Form C-102  
Revised 1-1-89

OIL CONSERVATION DIVISION

DISTRICT I  
P.O. Box 1980, Hobbs, NM 88240

P.O. Box 2088  
Santa Fe, New Mexico 87504-2088

DISTRICT II  
P.O. Drawer DD, Artesia, NM 88210

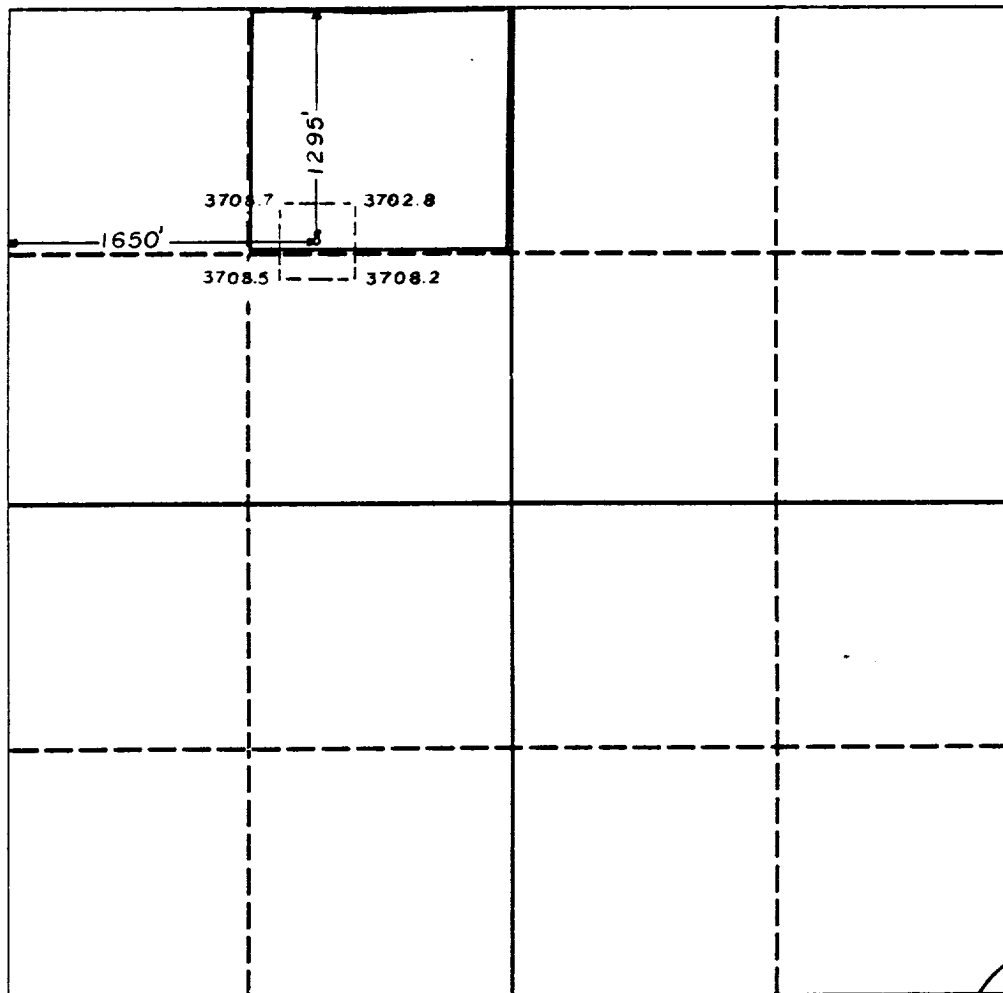
DISTRICT III  
1000 Rio Brazos Rd., Aztec, NM 87410

WELL LOCATION AND ACREAGE DEDICATION PLAT

All Distances must be from the outer boundaries of the section

Operator Ogrid #14049 Marbob Energy Company			Lease Foster Eddy Prop #6514		Well No. 13
Unit Letter C	Section 17	Township 17 South	Range 31 East	County NMFM Eddy	
Actual Footage Location of Well: Unit Letter C					
1650 feet from the West line and		1295 feet from the North line			
Ground level Elev. 3705.1	Producing Formation San Andres	Pool Grbg J SR Q Grbg SA		Dedicated Acreage: 40 Acres	

1. Outline the acreage dedicated to the subject well by colored pencil or hatchure marks on the plat below.
2. If more than one lease is dedicated to the well, outline each and identify the ownership thereof (both as to working interest and royalty).
3. If more than one lease of different ownership is dedicated to the well, have the interest of all owners been consolidated by communitization, unitization, force-pooling, etc.?  
☐ Yes ☐ No If answer is "yes" type of consolidation \_\_\_\_\_  
If answer is "no" list the owners and tract descriptions which have actually been consolidated. (Use reverse side of this form if necessary.) \_\_\_\_\_  
No allowable will be assigned to the well until all interests have been consolidated (by communitization, unitization, forced-pooling, or otherwise) or until a non-standard unit, eliminating such interest, has been approved by the Division.



OPERATOR CERTIFICATION

I hereby certify that the information contained herein is true and complete to the best of my knowledge and belief.

Signature  
Rhonda Nelson  
Printed Name  
Rhonda Nelson  
Position  
Production Clerk  
Company  
Marbob Energy Corporation  
Date  
6/10/96

SURVEYOR CERTIFICATION

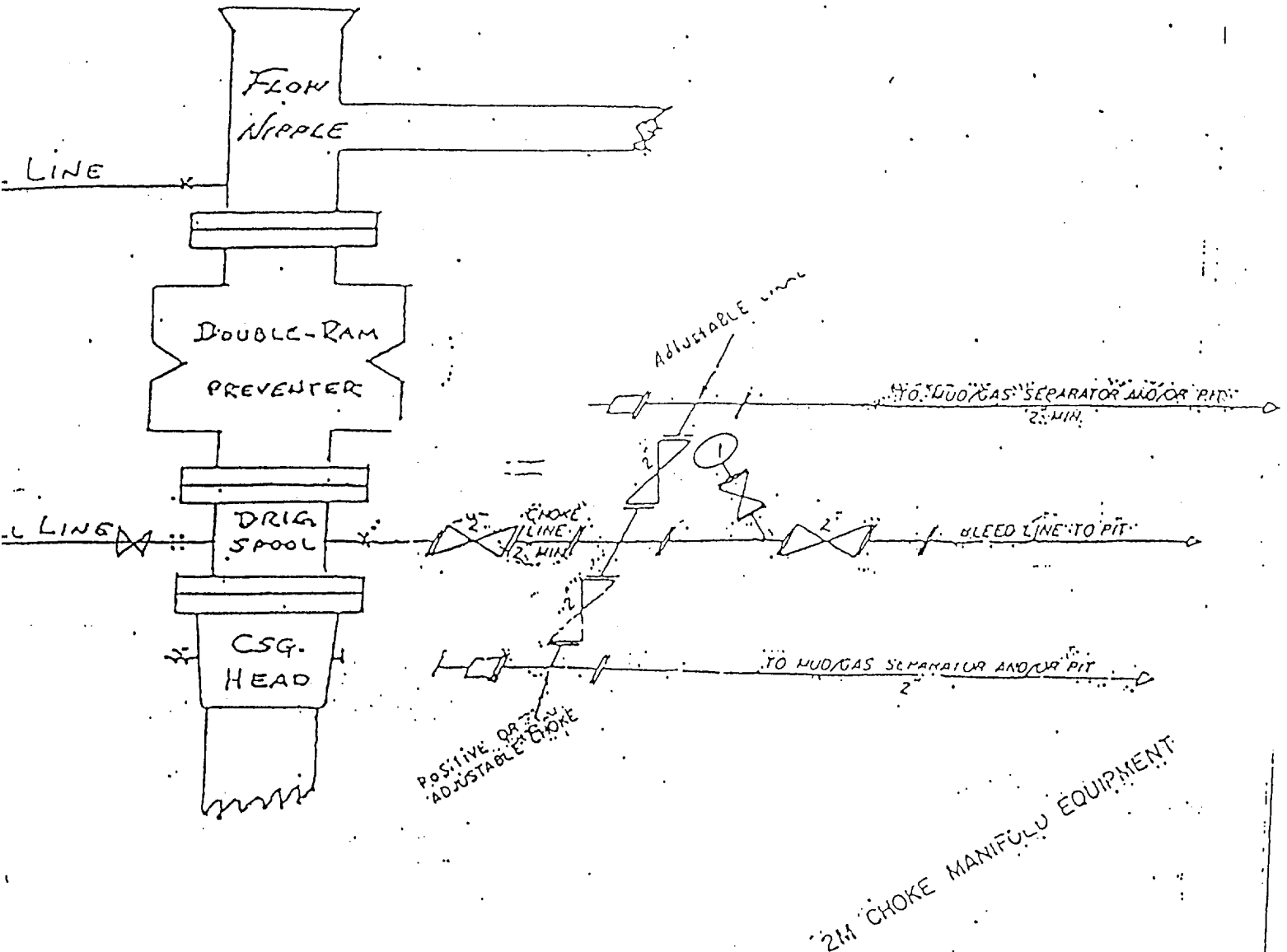
I hereby certify that the well location shown on this plat was plotted from field notes of actual surveys made by me or under my supervision, and that the same is true and correct to the best of my knowledge and belief.

Date Surveyed  
August 29, 1989  
Signature & Seal of  
Professional Surveyor



# B O P & CHOKE MANIFOLD

10"/900 Cameron SS Space Saver  
 3000# Working Pressure  
 3-000# Working Pressure Choke Manifold



Marbob Energy Corporation  
 Foster Eddy Federal No. 12  
 1295' FNL and 1650' FWL  
 Section 17, T-17S, R-31E  
 Eddy County, New Mexico  
 Exhibit #1

Attachment to Exhibit #1  
NOTES REGARDING THE BLOWOUT PREVENTERS

1. Drilling nipple to be so constructed that it can be removed without use of a welder through rotary table opening, with minimum I.D. equal to preventer bore.
2. Wear ring to be properly installed in head.
3. Blow out preventer and all fittings must be in good condition, 3000 psi W.P. minimum.
4. All fittings to be flanged.
5. Safety valve must be available on rig floor at all times with proper connections, valve to be full bore 3000 psi W.P. minimum.
6. All choke and fill lines to be securely anchored, especially ends of choke lines.
7. Equipment through which bit must pass shall be at least as large as the diameter of the casing being drilled through.
8. Kelly cock on kelly.
9. Extension wrenches and hand wheels to be properly installed.
10. Blow out preventer control to be located as close to driller's position as feasible.
11. Blow out preventer closing equipment to include minimum 40 gallon accumulator, two independent sources of pump power on each closing unit installation, and meet all API specifications.