

clst

UNITED STATES
DEPARTMENT OF THE INTERIOR
BUREAU OF LAND MANAGEMENT
OIL CONSERVATION DIV
814 S. MIST ST.
ARTESIA, NM 88210-205

APPLICATION FOR PERMIT TO DRILL, DEEPEN,

1a. Type of Work
DRILL ☒ DEEPEN ☐ PLUG BACK ☐
b. Type of Well
Oil Well ☒ Gas Well ☐ Other ☐
Single Zone ☒ Multiple Zone ☐

2. Name of Operator Pendragon Energy Partners, Inc.

3. Address of Operator
621 17th St., Suite 750, Denver CO, 8129

4. Location of Well
At surface: 2,600' FWL\50' FNL Sec 26, T17S-R30E Eddy County
At proposed depth SAME

14. Distance in Miles and Direction From Nearest Town Or Post Office
25 miles east of Artesia NM

15. Distance From Proposed*
Location to Nearest
Property or Lease Line, ft.
50' FNL

18. Distance From Proposed Location
to Nearest Well, Drilling, Completed,
or Applied for, On This Lease, ft.
2,000'

21. Elevations (show whether DF, RT, GR, etc.)
3,654

Size of Hole	PROPOSED Size of Casing	CASING AND Weight Per Foot	CEMENTING PROGRAM	Setting Depth	Quantity of Cement
12.250	8 5/8"	24.0		535	275 SXS
7.875	5 1/2	17.0		3,300	200 SXS

PROPOSED DRILLING & COMPLETION PROGRAM

- MIRU, Drill 12.25" Hole to 535', Set 8 5/8" Casing & Cement to Surface.
- NU BOP & Test to APD Specifications, Drill 7 7/8" Hole to +/- 3,300' Set & Cement 5 1/2" Production Casing to Surface. MIRU Completion Equipment and Complete a Pumping Oil Well According to Good Operating Practices.
- Install Production Facilities and Commence Production into Existing Processing Facilities.

CERTIFICATION:

I HEREBY CERTIFY THAT I AM RESPONSIBLE UNDER THE TERMS AND CONDITIONS OF THE LEASE OPERATION IN CONJUNCTION WITH THE APPLICATION. BOND COVERAGE PURSUANT TO 43 CFR 3104 FOR LEASE ACTIVITIES IS BEING PROVIDED BY PENDRAGON ENERGY PARTNERS, INC. UNDER THEIR STATEWIDE SURETY BOND NO. 9009300.

Approved Subject to
General Requirements and
Special Stipulations
Attached

IN ABOVE SPACE DESCRIBE PROPOSED PROGRAM: if proposal is to deepen or plug back, give data on present productive zone and proposed new zone. If proposal is to drill or deepen directionally, give pertinent data on subsurface locations and measured and true vertical depths. Give blowout preventer program, if any.

24.

Signed John Luchetta Title Agent Date Aug 16, 1996

Permit No. Approval Date SEP 20 1996

Approved By (ORIG. SGD.) RICHARD L. MANUS Title AGENT Date SEP 20 1996
conditions of approval, if any:

* See Instructions On Reverse Side

Title 18 U.S.C. Section 1001, makes it a crime for any person knowingly and willfully to make to any department or agency of the United States any false, fictitious or fraudulent statements or representations as to any matter within its jurisdiction.

DISTRICT I
P.O. Box 1980, Hobbs, NM 88241-1980

State of New Mexico
Energy, Minerals and Natural Resources Department

Form C-102
Revised February 10, 1994
Submit to Appropriate District Office
State Lease - 4 Copies
Fee Lease - 3 Copies

DISTRICT II
P.O. Drawer DD, Artesia, NM 88211-0719

DISTRICT III
1000 Rio Brazos Rd., Aztec, NM 87410

DISTRICT IV
P.O. BOX 2088, SANTA FE, N.M. 87504-2088

OIL CONSERVATION DIVISION

P.O. Box 2088
Santa Fe, New Mexico 87504-2088

☐ AMENDED REPORT

WELL LOCATION AND ACREAGE DEDICATION PLAT

API Number 30-015-29176	Pool Code 28509	Pool Name Grayburg-Jackson (TRUS-QU-GB-SA)
Property Code	Property Name GRAYBURG - JACKSON UNIT	Well Number 76
OGRID No.	Operator Name PENDRAGON ENERGY PARTNERS, INC.	Elevation 3654

Surface Location

UL or lot No.	Section	Township	Range	Lot Idn	Feet from the	North/South line	Feet from the	East/West line	County
C	26	17-S	30-E		50'	NORTH	2600'	WEST	EDDY

Bottom Hole Location If Different From Surface

UL or lot No.	Section	Township	Range	Lot Idn	Feet from the	North/South line	Feet from the	East/West line	County
Dedicated Acres 40	Joint or Infill	Consolidation Code	Order No.						

NO ALLOWABLE WILL BE ASSIGNED TO THIS COMPLETION UNTIL ALL INTERESTS HAVE BEEN CONSOLIDATED
OR A NON-STANDARD UNIT HAS BEEN APPROVED BY THE DIVISION

<p>2600'</p> <p>50'</p> <p>SEE DETAIL</p> <p>DETAIL</p> <p>3651.5' 3648.2'</p> <p>3651.2' 3650.2'</p>	<p>OPERATOR CERTIFICATION</p> <p>I hereby certify the the information contained herein is true and complete to the best of my knowledge and belief.</p> <p><i>John Luchetta</i> Signature</p> <p>JOHN LUCHETTA Printed Name</p> <p>AGENT Title</p> <p>AUG 16, 1996 Date</p> <p>SURVEYOR CERTIFICATION</p> <p>I hereby certify that the well location shown on this plat was plotted from field notes of actual surveys made by me or under my supervision, and that the same is true and correct to the best of my belief.</p> <p>AUGUST 6, 1996 Date Surveyed</p> <p>DMCC Signature & Seal of Professional Surveyor</p> <p><i>Ronald J. Eidson</i> 8-12-96 W.O. Num. 96-11-0970</p> <p>Certificate No. JOHN W. WEST 676 RONALD J. EIDSON 3239 GARY EIDSON 12641</p>
---	--

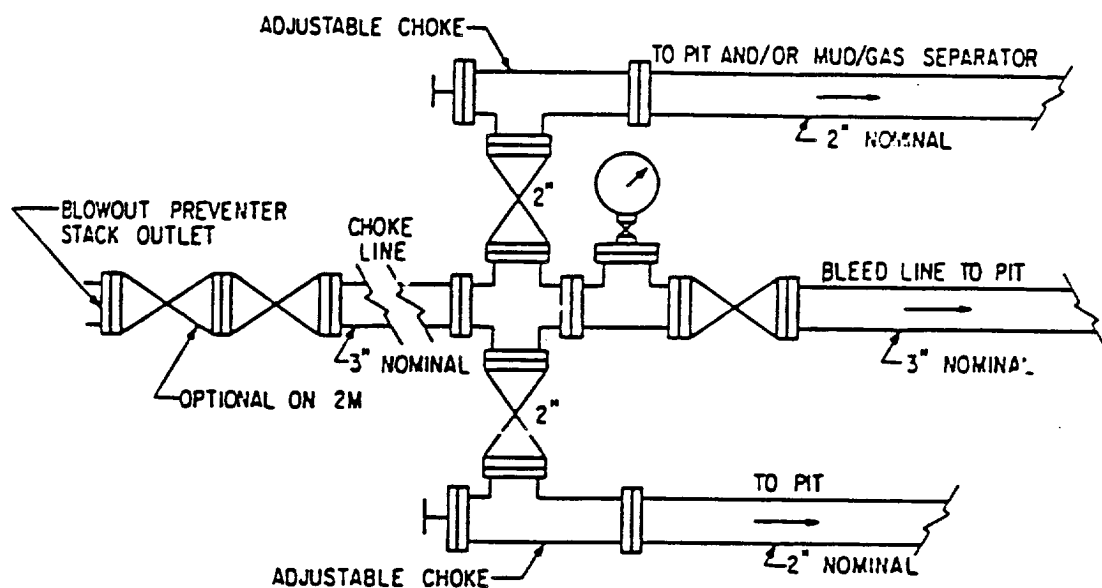


FIG. 3.A.1
 TYPICAL CHOKE MANIFOLD ASSEMBLY
 FOR 2M AND 3M RATED WORKING
 PRESSURE SERVICE — SURFACE INSTALLATION