

UNITED STATES
DEPARTMENT OF THE INTERIOR
BUREAU OF LAND MANAGEMENT

APPLICATION FOR PERMIT TO DRILL OR DEEPEN

1a. TYPE OF WORK

DRILL ☒

DEEPEN ☐

b. TYPE OF WELL

OIL
WELL

☒

GAS
WELL

☐

OTHER

SINGLE
ZONE

☐

MULTIPLE
ZONE

☐

2. NAME OF OPERATOR

The Wiser Oil Company

3. ADDRESS AND TELEPHONE NO.

c/o J. O. Easley, Inc., P. O. Box 1796, Roswell, NM 88201-1796 (505) 623-3758

4. LOCATION OF WELL (Report location clearly and in accordance with any State requirements.)*

At Surface 2616' FNL & 1343' FEL, Unit G

At proposed prod. Zone 2616' FNL & 1343' FEL, Unit G

14. DISTANCE IN MILES AND DIRECTION FROM NEAREST TOWN OR POST OFFICE*

± 5.7 miles southwest of Maljamar, NM

15. DISTANCE FROM PROPOSED *
LOCATION TO NEAREST

PROPERTY OR LEASE LINE, FT.

25'

(Also to nearest drilg. unit line, if any)

18. DISTANCE FROM PROPOSED LOCATION *

TO NEAREST WELL, DRILLING, COMPLETED
OR APPLIED FOR, ON THIS LEASE, FT.

905'

21. ELEVATIONS (Show whether DF, RT, GR, etc.)

3882'

16. NO. OF ACRES IN LEASE

640.00

17. NO. OF ACRES ASSIGNED
TO THIS WELL

40

20. ROTARY OR CABLE TOOLS

Rotary

22. APPROX. DATE WORK WILL START *

3-1-97

23. PROPOSED CASING AND CEMENTING PROGRAM

SIZE OF HOLE	GRADE, SIZE OF CASING	WEIGHT PER FOOT	SETTING DEPTH	QUANTITY OF CEMENT
12 1/4"	8 5/8" 8RD ST&C J-55	23#	400'	Circulate
7 7/8"	5 1/2" J-55	17#	4800'	Sufficient to bring cmt 100'
				above 8 5/8" casing shoe.

Duration of Program: Drilling - Nine (9) days
Completion - Thirty (30) days
See attached for complete Drilling Program

Approval Subject to
General Requirements and
Special Stipulations
Attached

EXHIBITS

Exhibit "A": Drilling Program

Exhibit "D": Land Survey Plat

Exhibit "G": Rig Layout

Exhibit "B": H₂S Plan

Exhibit "E": Vicinity Plat

Exhibit "H": BOP Layout

Exhibit "C": Surface Use Plan

Exhibit "F": Existing Well Plat

IN ABOVE SPACE DESCRIBE PROPOSED PROGRAM: If proposal is to deepen, give data on present productive zone and proposed new productive zone. If proposal is to drill or deepen directionally, give pertinent data on subsurface locations and measured and true vertical depths. Give blowout preventer program, if any.

24.

SIGNED

Michael R. Burch, CPL

TITLE Agent for The Wiser Oil Company

DATE 8-19-96

(This space for Federal or State office use)

PERMIT NO.

APPROVAL DATE

Application approval does not warrant or certify that the applicant holds legal or equitable title to those rights in the subject lease which would entitle the applicant to conduct operations thereon.

CONDITIONS OF APPROVAL, IF ANY:

APPROVED BY

/s/ JOAN R. FLOREZ

TITLE

Acting

Area Manager

DATE

SEP 24 1996

*See Instructions On Reverse Side

Title 18 U.S.C. Section 1001, makes it a crime for any person knowingly and willfully to make to any department or agency of the United States any false, fictitious or fraudulent statements or representations as to any matter within its jurisdiction.

DISTRICT I
P. O. Box 1980
Hobbs, NM 88241-1980

State of New Mexico
Geology, Minerals, and Natural Resources Department

Form G-102
Revised 02-10-94

Instructions on back

DISTRICT II
P. O. Drawer DD
Artesia, NM 88211-0719

EXHIBIT "D"

OIL CONSERVATION DIVISION

P. O. Box 2088
Santa Fe, New Mexico 87504-2088

Submit to the Appropriate
District Office
State Lease - 4 copies
Fee Lease - 3 copies

DISTRICT III
1000 Rio Brazos Rd.
Aztec, NM 87410

DISTRICT IV
P. O. Box 2088
Santa Fe, NM 87507-2088

☐ AMENDED REPORT

WELL LOCATION AND ACREAGE DEDICATION PLAT

1 API Number 30-015- 29183		2 Pool Code 28509		3 Pool Name Grayburg Jackson 7-Rivers QN GB SA			
4 Property Code 017540		5 Property Name SKELLY UNIT 'G'				6 Well Number 243	
7 OGRID No. 022922		8 Operator Name THE WISER OIL COMPANY				9 Elevation 3882'	

10 SURFACE LOCATION

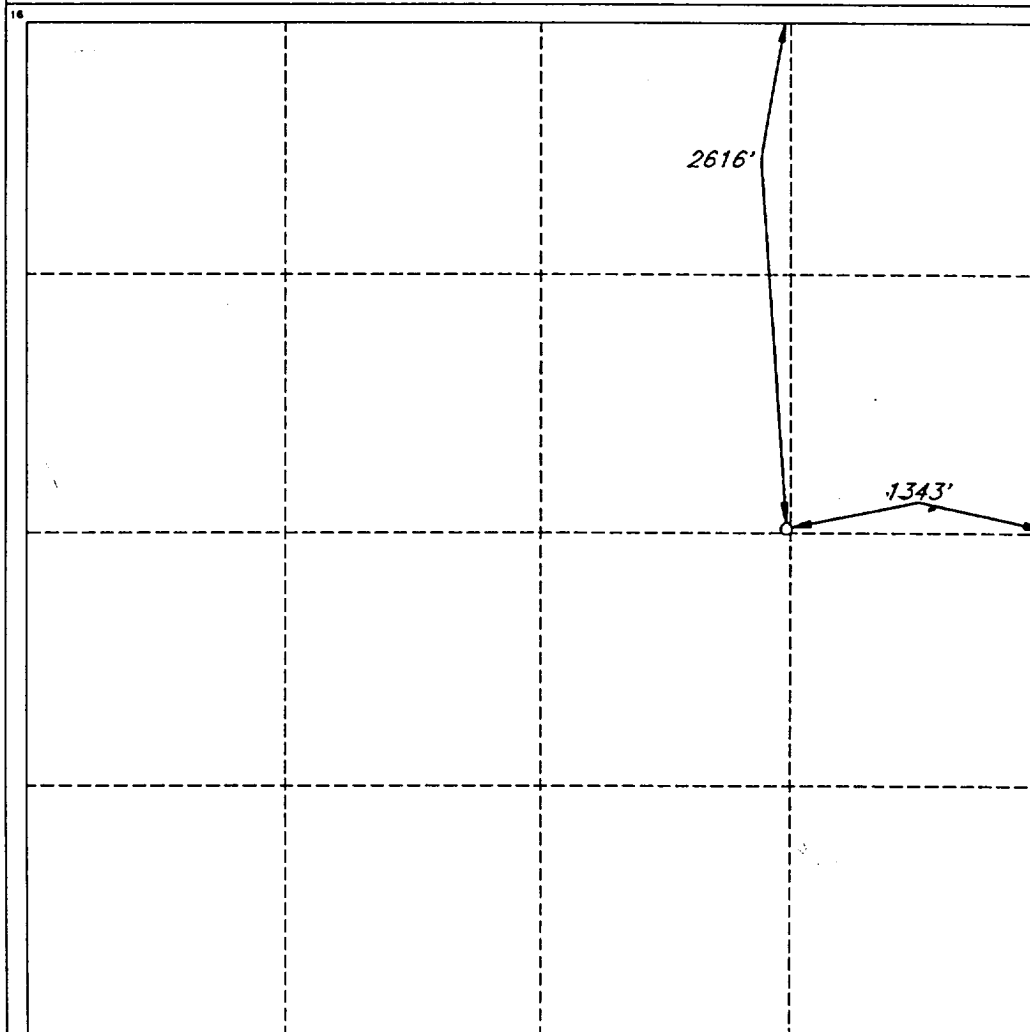
UL or lot no. G	Section 23	Township 17 SOUTH	Range 31 EAST, N.M.P.M.	Lot Ida	Feet from the 2616'	North/South line NORTH	Feet from the 1343'	East/West line EAST	County EDDY
--------------------	---------------	----------------------	----------------------------	---------	------------------------	---------------------------	------------------------	------------------------	----------------

11 BOTTOM HOLE LOCATION IF DIFFERENT FROM SURFACE

UL or lot no.	Section	Township	Range	Lot Ida	Feet from the	North/South line	Feet from the	East/West line	County
---------------	---------	----------	-------	---------	---------------	------------------	---------------	----------------	--------

12 Dedicated Acres 40	13 Joint or Infill	14 Consolidation Code	15 Order No.
--------------------------	--------------------	-----------------------	--------------

NO ALLOWABLE WELL BE ASSIGNED TO THIS COMPLETION UNTIL ALL INTERESTS HAVE BEEN
CONSOLIDATED OR A NON-STANDARD UNIT HAS BEEN APPROVED BY THE DIVISION



OPERATOR CERTIFICATION

I hereby certify that the information
contained herein is true and complete
to the best of my knowledge and belief.

Signature
Michael R. Burch
Printed Name
Michael R. Burch, CPL
Title
Agent for The Wiser Oil
Company
Date
8-19-96

SURVEYOR CERTIFICATION

I hereby certify that the well
location shown on this plat was
plotted from field notes of actual
surveys made by me or under
my supervision, and that the
same is true and correct to the
best of my belief.

Date of Survey
JANUARY 17, 1996

Signature and Seal of
Professional Surveyor
V. Lynn Bezner
V. LYNN BEZNER
NO. 7920
Certified by
V. Z. BEZNER LAND SURVEYOR #7920
JOB #43298 11-98 SE / JSJ

BOP & CHOKE MANIFOLD

12"/900 Cameron SS Space Saver
3000# Working Pressure
3000# Working Pressure Choke Manifold

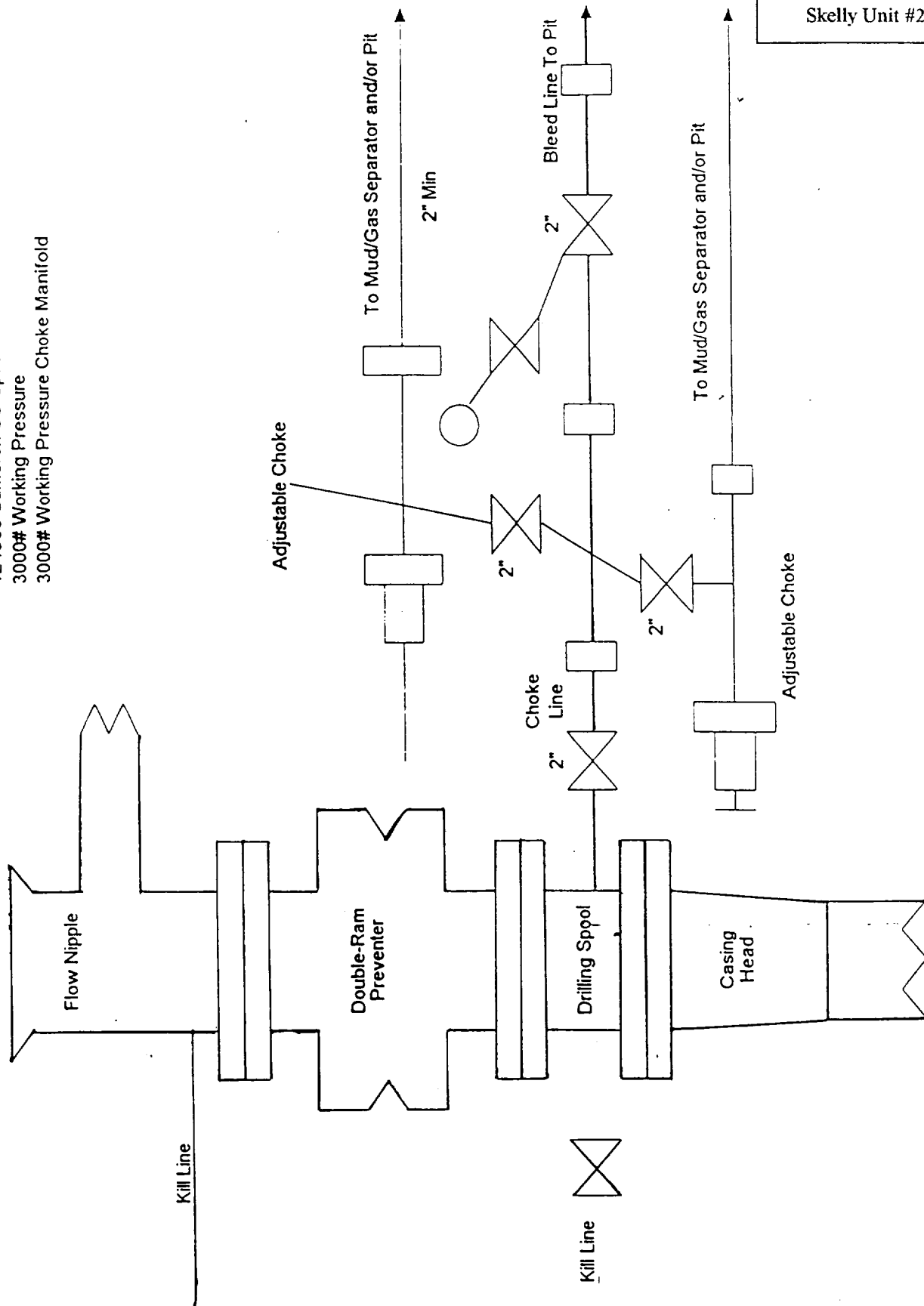


EXHIBIT "H"

BOP LAYOUT

The Wiser Oil Company
Skelly Unit #243