

OIL CONSERVATION DIV.  
811 S. 1st ST. (Other Instruct reverse side)  
ARTESIA, NM 88210-2834  
**UNITED STATES DEPARTMENT OF THE INTERIOR**  
**BUREAU OF LAND MANAGEMENT**

FORM APPROVED  
OMB NO. 1004-0136  
Expires February 28, 1995

**APPLICATION FOR PERMIT TO DRILL OR DEEPE**

1a. TYPE OF WORK

DRILL ☒

DEEPEEN ☐

OCT - 7 1996

b. TYPE OF WELL

OIL WELL ☒ GAS WELL ☐ OTHER ☐

2. NAME OF OPERATOR

The Wiser Oil Company (22922)

3. ADDRESS AND TELEPHONE NO.

c/o J. O. Easley, Inc., P. O. Box 1796, Roswell, NM 88201-1796 (505) 623-3758

4. LOCATION OF WELL (Report location clearly and in accordance with any State requirements.)\*

At Surface 1401' FNL & 1338' FWL, Unit F

At proposed prod. Zone 1401' FNL & 1338' FWL, Unit F

14. DISTANCE IN MILES AND DIRECTION FROM NEAREST TOWN OR POST OFFICE\*

± 5.7 miles southwest of Maljamar, NM

15. DISTANCE FROM PROPOSED \*  
LOCATION TO NEAREST

PROPERTY OR LEASE LINE, FT. 1338'  
(Also to nearest drlg. unit line, if any)

18. DISTANCE FROM PROPOSED LOCATION \*

TO NEAREST WELL, DRILLING, COMPLETED OR APPLIED FOR, ON THIS LEASE, FT. 846'

21. ELEVATIONS (Show whether DF, RT, GR, etc.)

3878'

16. NO. OF ACRES IN LEASE

640.00

17. NO. OF ACRES ASSIGNED  
TO THIS WELL

40

18. DISTANCE FROM PROPOSED LOCATION \*

19. PROPOSED DEPTH

4800'

20. ROTARY OR CABLE TOOLS

Rotary

22. APPROX. DATE WORK WILL START \*

10-1-96

23. PROPOSED CASING AND CEMENTING PROGRAM

SIZE OF HOLE	GRADE, SIZE OF CASING	WEIGHT PER FOOT	SETTING DEPTH	QUANTITY OF CEMENT
12 1/4"	8 5/8" 8RD ST&C J-55	20#	400'	Circulate
7 7/8"	5 1/2" J-55	17#	4800'	Sufficient to bring cmt 100' above 8 5/8" casing shoe.

Duration of Program: Drilling - Nine (9) days  
Completion - Thirty (30) days  
See attached for complete Drilling Program

EXHIBITS

Exhibit "A": Drilling Program  
Exhibit "B": H<sub>2</sub>S Plan  
Exhibit "C": Surface Use Plan  
Exhibit "D": Land Survey Plat  
Exhibit "E": Vicinity Plat  
Exhibit "F": Existing Well Plat

Exhibit "G": Rig Layout  
Exhibit "H": BOP Layout

IN ABOVE SPACE DESCRIBE PROPOSED PROGRAM: If proposal is to deepen, give data on present productive zone and proposed new productive zone. If proposal is to drill or deepen directionally, give pertinent data on subsurface locations and measured and true vertical depths. Give blowout preventer program, if any.

24.

SIGNED Michael R. Burch  
Michael R. Burch, CPL

TITLE Agent for The Wiser Oil Company

DATE 9-4-96

(This space for Federal or State office use)

PERMIT NO. \_\_\_\_\_ APPROVAL DATE \_\_\_\_\_

Application approval does not warrant or certify that the applicant holds legal or equitable title to those rights in the subject lease which would entitle the applicant to conduct operations thereon.

CONDITIONS OF APPROVAL, IF ANY:

APPROVED BY (ORIG. SGD.) RICHARD L. MANUS TITLE Area Manager

DATE

OCT 4 1996

\*See Instructions On Reverse Side

Title 18 U.S.C. Section 1001, makes it a crime for any person knowingly and willfully to make to any department or agency of the United States any false, fictitious or fraudulent statements or representations as to any matter within its jurisdiction.



**EXHIBIT "D"**

DISTRICT I  
P.O. Box 1980, Hobbs, NM 88241-1980

DISTRICT II  
P.O. Drawer DD, Artesia, NM 88211-0719

DISTRICT III  
1000 Rio Brazos Rd., Aztec, NM 87410

DISTRICT IV  
P.O. BOX 2088, SANTA FE, N.M. 87504-2088

State of New Mexico  
Energy, Minerals and Natural Resources Department

Form C-102  
Revised February 10, 1994  
Submit to Appropriate District Office  
State Lease - 4 Copies  
Fee Lease - 3 Copies

**OIL CONSERVATION DIVISION**

P.O. Box 2088  
Santa Fe, New Mexico 87504-2088

☐ AMENDED REPORT

**WELL LOCATION AND ACREAGE DEDICATION PLAT**

API Number <b>30-015-29203</b>	Pool Code <b>28509</b>	Pool Name <b>Grayburg Jackson 7-Rivers ON GB SA</b>
Property Code <b>017540</b>	Property Name <b>SKELLY UNIT "F"</b>	Well Number <b>180</b>
OGRID No. <b>022922</b>	Operator Name <b>THE WISER OIL COMPANY</b>	Elevation <b>3878</b>

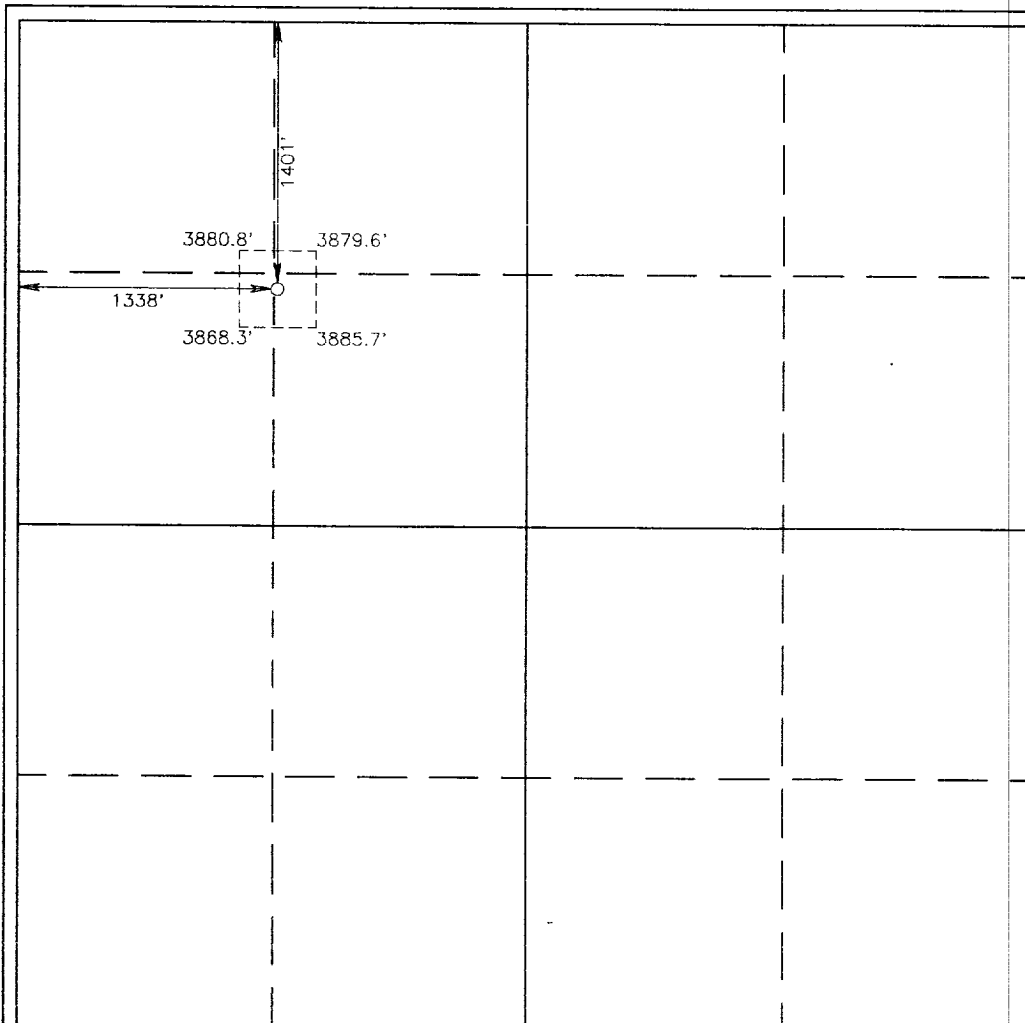
**Surface Location**

UL or lot No. <b>F</b>	Section <b>15</b>	Township <b>17 S</b>	Range <b>31 E</b>	Lot Idn	Feet from the <b>1401</b>	North/South line <b>NORTH</b>	Feet from the <b>1338</b>	East/West line <b>WEST</b>	County <b>EDDY</b>
---------------------------	----------------------	-------------------------	----------------------	---------	------------------------------	----------------------------------	------------------------------	-------------------------------	-----------------------

**Bottom Hole Location If Different From Surface**

UL or lot No.	Section	Township	Range	Lot Idn	Feet from the	North/South line	Feet from the	East/West line	County
Dedicated Acres <b>40</b>		Joint or Infill	Consolidation Code	Order No.					

NO ALLOWABLE WILL BE ASSIGNED TO THIS COMPLETION UNTIL ALL INTERESTS HAVE BEEN CONSOLIDATED  
OR A NON-STANDARD UNIT HAS BEEN APPROVED BY THE DIVISION

**OPERATOR CERTIFICATION**

I hereby certify the the information  
contained herein is true and complete to the  
best of my knowledge and belief.

*Michael R. Burch*  
Signature

**Michael R. Burch, CPL**  
Printed Name  
**Agent for The Wisser Oil Company**

Title  
**9-04-96**

Date

**SURVEYOR CERTIFICATION**

I hereby certify that the well location shown  
on this plat was plotted from field notes of  
actual surveys made by me or under my  
supervision, and that the same is true and  
correct to the best of my belief.

**AUGUST 2, 1996**

Date Surveyed  
CDG

Signature & Seal of  
Professional Surveyor  
*Ronald B. Eidson*  
**8-06-96**  
**96-11-0945**

Certificate No. **JOHN W. WEST 676**  
**RONALD B. EIDSON 3239**  
**CARLYN EIDSON 12641**



# BOP & CHOKE MANIFOLD

12"/900 Cameron SS Space Saver  
3000# Working Pressure  
3000# Working Pressure Choke Manifold

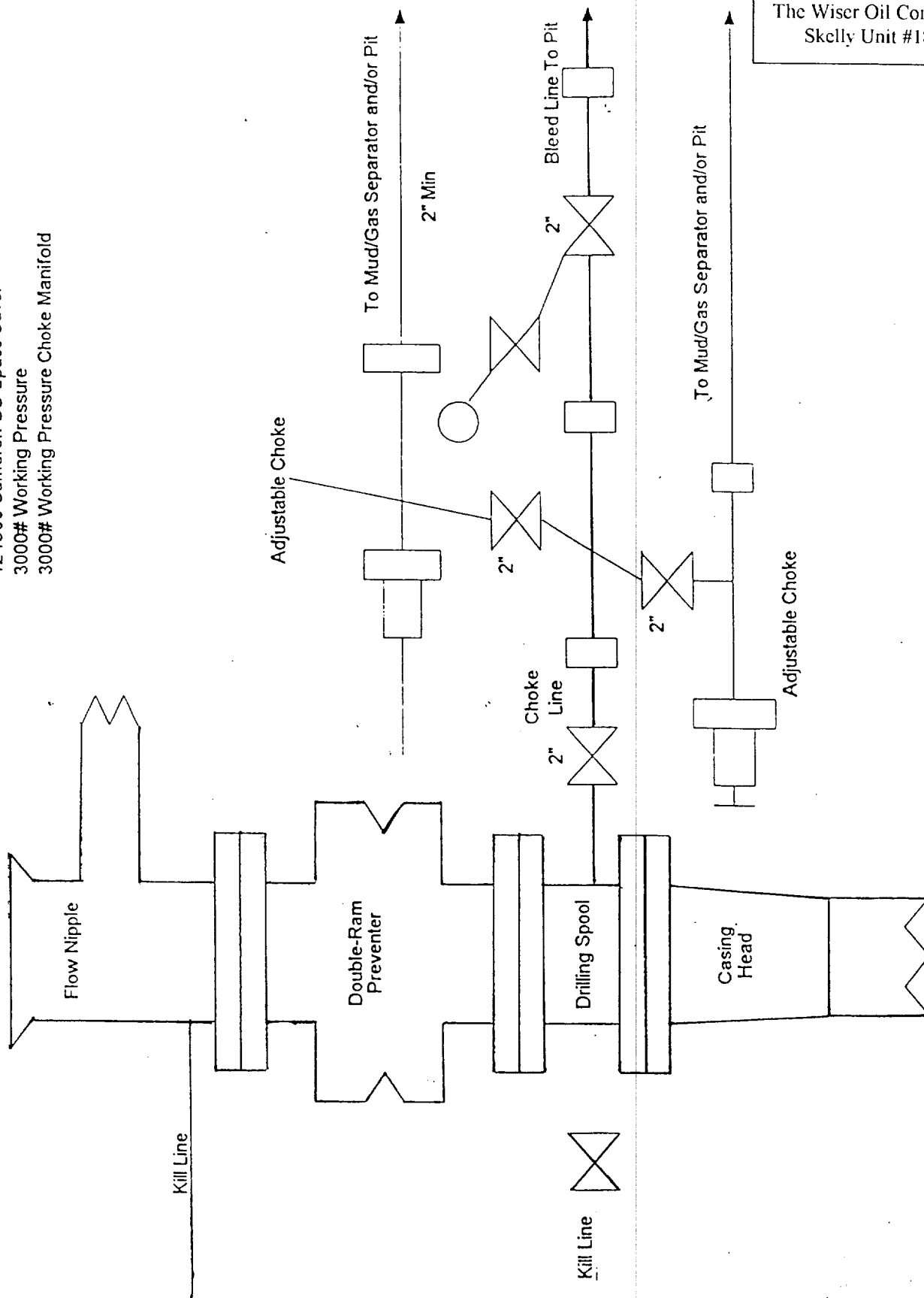


EXHIBIT "H"  
BOP LAYOUT  
The Wiser Oil Company  
Skelly Unit #180

