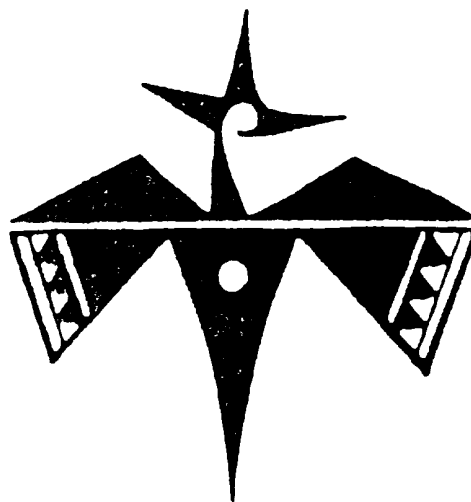


NOV 14 1996

PECOS
ARCHEOLOGICAL
CONSULTANTS
P.O. BOX 1771
CARLSBAD, NM 88221



Archeological Clearance Report for
Marbob Energy Corporation's
Burch Keely Units No.s 834, 835, 836, 837
Situated on Public Lands in Eddy County, N.M.
PAC Report No. 96078
NMCRIS No. 54406

Archeological Clearance Report for

Marbob Energy Corporation's
Burch Keely Units No.s 834, 835, 836, 837
Situated on Public Lands in Eddy County, N.M.
PAC Report No. 96078
NMCRIS No. 54406

prepared by
James E. Hunt

submitted by
Pecos Archeological Consultants
P.O. Box 1771, Carlsbad, N.M., 88221
November 12, 1996
BLM Cultural Use Permit No. 6-2920-96
State Blanket Survey Permit No. 96-024

ABSTRACT

On November 4, 1996, Pecos Archeological Consultants (BLM Cultural Use Permit No. 6-2920-96, State Blanket Survey Permit No. 96-024) undertook an archeological inventory for a four proposed drill locations scheduled to be impacted by Marbob Energy Corporation. This project will be situated on public lands in Eddy County, New Mexico. These lands occur in section 24, 25, 26, T17S, R29E, NMPM, Eddy County, N.M. A total of 15.77 acres of federal surface ownership were investigated during this project, which was conducted in 8 man-hours by James E. Hunt and Robert J. Martin. Four isolated manifestations (IMs) were recorded as occurring within the impact zone that will result from the planned activity. Due to the limited nature of cultural resources in the impact zone, Pecos Archeological Consultants is recommending clearance for Marbob Energy Corporation's project, as planned.

INTRODUCTION

On November 1, 1996, Pecos Archeological Consultants was requested by Mr. David Martin,

representing Marbob Energy Corporation to perform the archeological survey for four drill locations scheduled for construction on public land in Eddy County, New Mexico. This land is administered by the Bureau of Land Management and it will be impacted by earth-moving activities. Consequently, federal law requires that an intensive archeological inventory be performed to identify what cultural resources might be impacted by such construction prior to granting clearance to the project. Therefore, Pecos Archeological Consultants undertook this survey on November 4, 1996. Fieldwork for this project was performed by James E. Hunt and Robert J. Martin. The following is a report of the field activities and findings resulting from the survey.

SURVEY METHODOLOGY

Pecos Archeological Consultants conducted this survey by physically examining the entire impact zone which will result from the planned construction. Pedestrian inspection along parallel transects was accomplished across the staked drill location. These transects were spaced 15 meters apart; however, established transects were departed from to examine nearby areas of high site probability. All prominent deflations and denuded areas were given special attention. Additionally, all attendant easements (if any) were surveyed in two parallel transects spaced 15 meters apart. The survey was conducted on one sunny day under dry soil conditions. Surface visibility in the region, which, due to floral cover, ranged between 10-35% of the ground, made this the most practical methodology for effectively sampling the impact zone which will result from this project as planned.

ENVIRONMENT

The project area will be located south of NM 82, east of Bear Grass Draw. This is an undulating landform which is characterized by stabilized and coppice sand dunes or mesquite anchored hummocks which range from 1 to 2 meters in height. These are interspersed with deflated areas and basins which have been formed by aeolian action. Local soils in the region consist of loamy sands which belong to the Kermit-Berino association. These soils are drained internally, and they possess inclusions of chert and quartzite gravels, some of which are suitable for chipped stone tool manufacture. Elevation in the project area is between 3500 ft and 3800 ft above sea level.

The project area is part of an environmental zone called the Lower Sonoran Life Zone. The most common plant varieties in the region are shin oak (*Quercus havardii*), mesquite (*Prosopis juliflora*) plains yucca (*Yucca glauca*), broom snakeweed (*Gutierrezia sarothrae*) and various grasses. Some of the common faunal types in area are mule deer (*Odocoileus hemionus*), pronghorn antelope (*Antilocapra americana*), jackrabbit (*Lepus* sp.), cottontail rabbit (*Sylvilagus* sp.), coyote (*Canis latrans*), as well as other small mammals, birds and reptiles. Bison (*Bison bison*) also ranged east of the Pecos River prior to their near-extinction in the nineteenth century.

LOCATIONAL DATA

Marbob Energy Corporation's drill location, designated the Burch Keery No. 834, will measure

400 X 400 ft, or 3.6 acres. It will be situated 25 ft from the south line and 1980 ft from the west

line, in the:

SE1/4 SW1/4, section 24, T17S, R29E, NMPM, Eddy Co., N.M.

NE1/4 NW1/4, section 25, T17S, R29E, NMPM, Eddy Co., N.M.

The access road to this well will measure 100 ft X 600 ft or 1.37 acres. It will be situated in the:

NE1/4 NW1/4, section 25, T17S, R29E, NMPM, Eddy Co., N.M.

The BK No. 835 will measure 400 ft X 400 ft or 3.6 acres. It will be situated 1980 ft from the north line and 1295 ft from the west line, in the:

SE1/4 NW1/4, section 25, T17S, R29E, NMPM, Eddy Co., N.M.

SW1/4 NW1/4, section 25, T17S, R29E, NMPM, Eddy Co., N.M.

The BK No. 836 drill location will measure 400 ft X 400 ft or 3.6 acres. It will be situated 1980 ft from the north line and 50 ft from the east line, in the:

SW1/4 NW1/4, section 25, T17S, R29E, NMPM, Eddy Co., N.M.

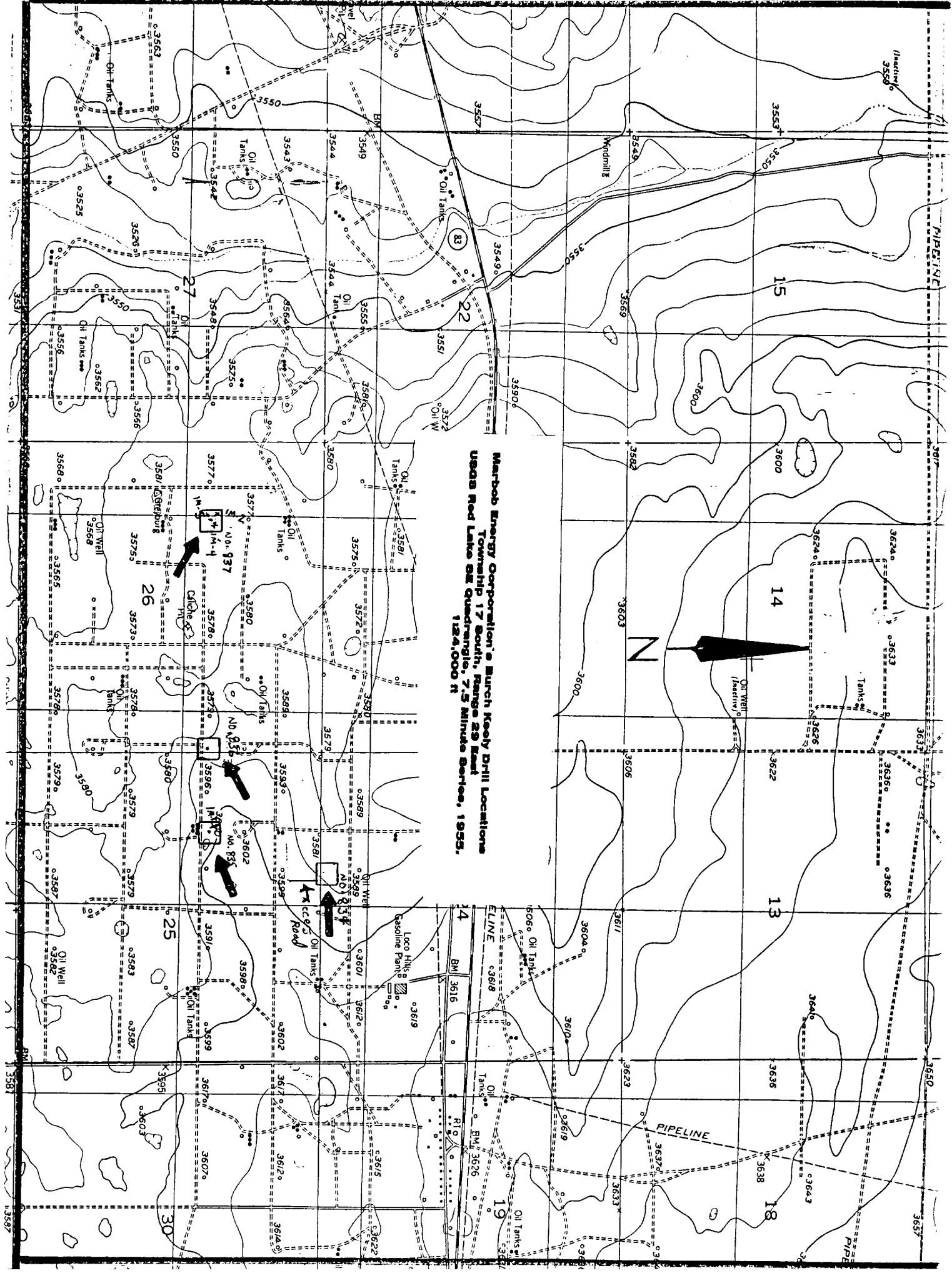
SE1/4 NE1/4, section 26, T17S, R29E, NMPM, Eddy Co., N.M.

The BK No. 836 drill location will measure 400 ft X 400 ft or 3.6 acres. It will be situated 1980 ft from the north line and 1295 ft from the east line, in the:

SE1/4 NW1/4, section 26, T17S, R29E, NMPM, Eddy Co., N.M.

SW1/4 NW1/4, section 26, T17S, R29E, NMPM, Eddy Co., N.M.

Map Reference: USGS Red Lake SE Quadrangle, 7.5 Minute Series, 1955.



Marbob Energy Corporation's Burch Keely Drill Locations
Township 17 South, Range 29 East
USGS Red Lake 8E Quadrangle, 7.5 Minute Series, 1955.
124,000 ft

ARCHEOLOGICAL RESOURCES

On November 4, 1996, Pecos Archeological Consultants performed a literature search to determine if any archeological sites had already been recorded in the vicinity of the project area. Current BLM files and the National Register of Historic Places were consulted in this endeavor. Nineteen previously-recorded sites were found to occur in the project area. These are LA site No.s:

LA 54739	LA 54738	LA 38986	
LA 75704	LA 54740	LA 75270	LA 110646
LA 104392	LA 55908	LA 75705	LA 104410
LA 104402	LA 70310	LA 104390	LA 104409
LA 104411	LA 70311	LA 104398	LA 104403

None of these sites were encountered during this suvey.

Observed Archeological Resources:

Four isolated manifestations (IMs) were recorded during the course of this inventory.

ISOLATED MANIFESTATIONS

Isolated Manifestation No. 1 (IM-1) consists of two sandstone mano fragments. This IM is located in a deflated area at an elevation of 3590 ft above sea level. IM-1 can be found on the BK No. 835, in the:

NE1/4 SW1/4 NW1/4, section 25, T17S, R29E, NMPM, Eddy Co., N.M.

Map Reference: USGS Red Lake SE Quadrangle, 7.5 Minute Series, 1955.

Isolated Manifestation No. 2 (IM-2) consists of a Chupadero Black-on-white potsherd, a sandstone mano and a gray chert piece of angular debris in the 3-6 cm size category. These are located in a deflation basin at an elevation of 3580 ft above sea level, on the BK No. 387, in the: SE1/4 SW1/4 NW1/4, section 26, T17S, R29E, NMPM, Eddy Co., N.M.

Map Reference: USGS Red Lake SE Quadrangle, 7.5 Minute Series, 1955.

Isolated Manifestation No. 3 (IM-3) includes tan chert tertiary decorticaion flakes in the 3-6 cm size category, a piece of purple chert thermally-altered rock and a piece of gray chert thermally-altered rock. This is located in a deflation at an elevation of 3580 ft above sea level.

IM-2 can be found on the BK No. 837, in the:

NE1/4 SW1/4 NW1/4, section 26, T17S, R29E, NMPM, Eddy Co., N.M.

Map Reference: USGS Red Lake SE Quadrangle, 7.5 Minute Series, 1955.

Isolated Manifestation No. 4 (IM-4) consists of a piece of undiagnostic ground sandstone and 6-10 small fragments of thermally-altered cache. This IM is located in a deflation at an elevation 3600, on the BK No. 837, in the:

NW1/4 SE1/4 NW1/4, section 26, T17S, R29E, NMPM, Eddy Co., N.M.

Map Reference: USGS Red Lake SE Quadrangle, 7.5 Minute Series, 1955.

RECOMMENDATIONS

Due to the limited nature of the cultural resources in the project area, Pecos Archeological Consultants is recommending clearance for Marbob Energy Corporation's project, as planned. This recommendation is made on the basis of an intensive surface inspection of the project area. Should additional, purely subsurface remains occur in the impact zone, they would not be detected without extensive subsurface test excavation. Of course, approval for our recommendations and final clearance for the project must be granted by the appropriate government agency.