

DISTRICT I  
P. O. Box 1980, Hobbs, NM 88240

DISTRICT II  
P. O. Drawer DD, Artesia, NM 88210

DISTRICT III  
1000 Rio Brazos Rd., Aztec, NM 87410

DISTRICT IV  
P. O. Box 2088, Santa Fe, NM 87504-2088

State of New Mexico  
Energy, Minerals and Natural Resources Department

OIL CONSERVATION DIVISION

PO Box 2088  
Santa Fe, NM 87504-2088

Form C-102  
Revised February 10, 1994

Instructions on back

Submit to Appropriate District Office

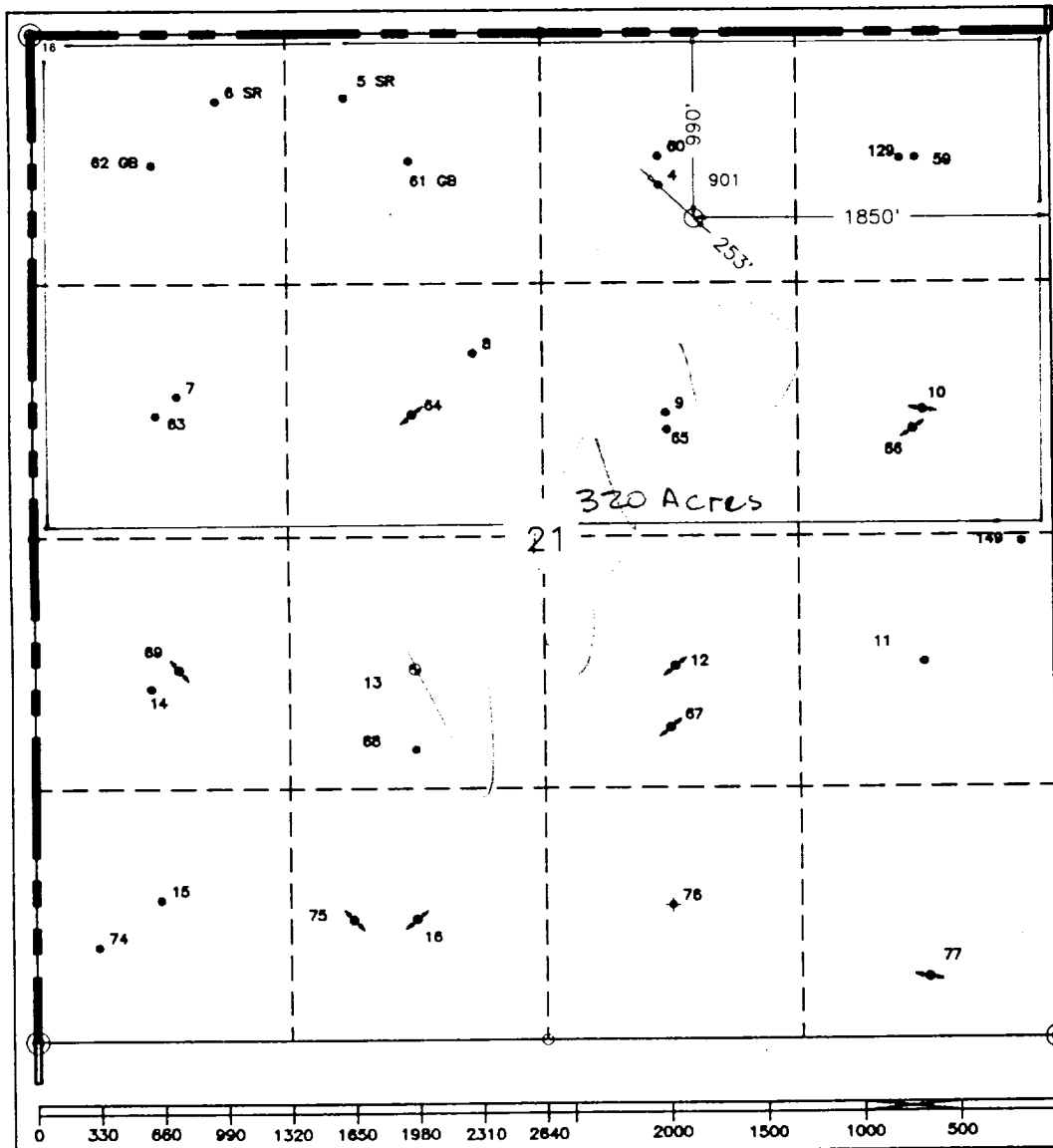
State Lease--4 copies  
Fee Lease--3 copies

☐ AMENDED REPORT

WELL LOCATION AND ACREAGE DEDICATION PLAT

<sup>1</sup> API Number		<sup>2</sup> Pool Code		<sup>3</sup> Pool Name Fren, Morrow					
<sup>4</sup> Property Code 11091		<sup>5</sup> Property Name Skelly Unit						<sup>6</sup> Well Number 901	
<sup>7</sup> OGRID No. 22351		<sup>8</sup> Operator Name TEXACO EXPLORATION & PRODUCTION, INC.						<sup>9</sup> Elevation 3798'	
<sup>10</sup> Surface Location									
UL or lot no. B	Section 21	Township 17-S	Range 31-E	Lot Idn	Feet from the 990'	North/South line North	Feet from the 1850'	East/West line East	<sup>12</sup> County Eddy
<sup>11</sup> Bottom Hole Location If Different From Surface									
UL or lot no.	Section	Township	Range	Lot Idn	Feet from the	North/South line	Feet from the	East/West line	<sup>12</sup> County
<sup>13</sup> Dedicated Acres 320		<sup>14</sup> Joint or Infill		<sup>15</sup> Consolidation Code		<sup>16</sup> Order No.			

NO ALLOWABLE WILL BE ASSIGNED TO THIS COMPLETION UNTIL ALL INTERESTS HAVE BEEN CONSOLIDATED  
OR A NON-STANDARD UNIT HAS BEEN APPROVED BY THE DIVISION.



<sup>17</sup> OPERATOR CERTIFICATION	
I hereby certify that the information contained herein is true and complete to the best of my knowledge and belief.	
Signature <i>C. Wade Howard</i>	
Printed Name C. Wade Howard	
Position Engineer's Assistant	
Company Texaco Expl. & Prod. Inc.	
Date October 8, 1996	
<sup>18</sup> SURVEYOR CERTIFICATION	
I hereby certify that the well location shown on this plat was plotted from field notes of actual surveys made by me or under my supervision, and that the same is true and correct to the best of my knowledge and belief.	
Date Surveyed October 7, 1996	
Signature & Seal of Professional Surveyor <i>John S. Piper</i>	
Certificate No. 7254 John S. Piper	
Sheet 8 of 8	