

DISTRICT I
P. O. Box 1980, Hobbs, NM 88240

DISTRICT II
P. O. Drawer DD, Artesia, NM 88210

DISTRICT III
1000 Rio Brazos Rd., Aztec, NM 87410

DISTRICT IV
P. O. Box 2088, Santa Fe, NM 87504-2088

State of New Mexico
Energy, Minerals and Natural Resources Department

OIL CONSERVATION DIVISION

PO Box 2088
Santa Fe, NM 87504-2088

Form C-102
Revised February 10, 1994

Instructions on back

Submit to Appropriate District Office

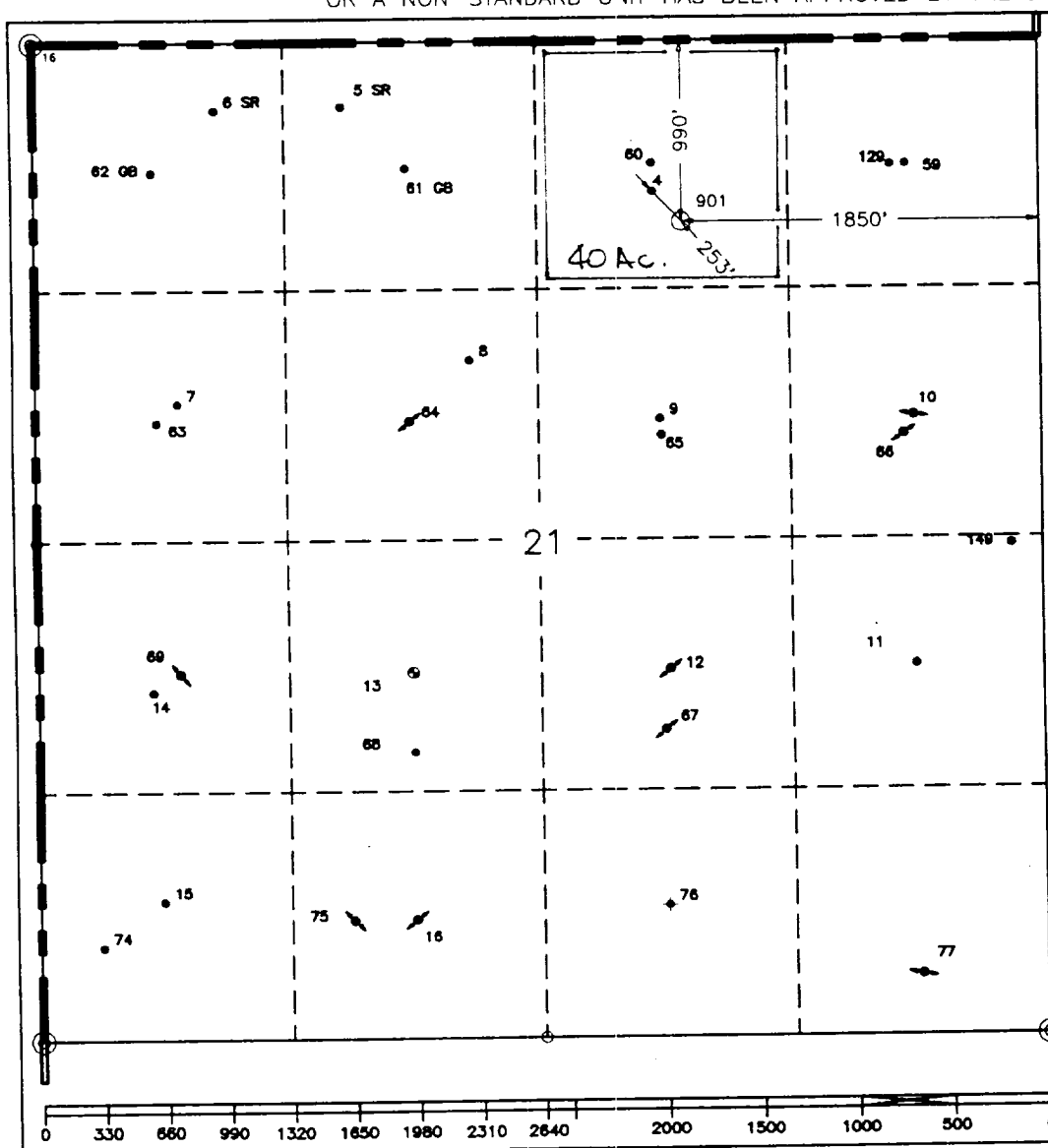
State Lease-4 copies
Fee Lease-3 copies

☐ AMENDED REPORT

WELL LOCATION AND ACREAGE DEDICATION PLAT

¹ API Number		² Pool Code		³ Pool Name Undesignated, Wolfcamp; Fren, Paddock, Wildcat ABO					
⁴ Property Code 11091		⁵ Property Name Skelly Unit						⁶ Well Number 901	
⁷ OGRID No. 22351		⁸ Operator Name TEXACO EXPLORATION & PRODUCTION, INC.						⁹ Elevation 3791'	
¹⁰ Surface Location									
UL or lot no. B	Section 21	Township 17-S	Range 31-E	Lot Idn	Feet from the 990'	North/South line North	Feet from the 1850'	East/West line East	⁷ County Eddy
¹¹ Bottom Hole Location If Different From Surface									
UL or lot no.	Section	Township	Range	Lot Idn	Feet from the	North/South line	Feet from the	East/West line	⁷ County
¹² Dedicated Acres 40		¹³ Joint or Infill		¹⁴ Consolidation Code		¹⁵ Order No.			

NO ALLOWABLE WILL BE ASSIGNED TO THIS COMPLETION UNTIL ALL INTERESTS HAVE BEEN CONSOLIDATED
OR A NON-STANDARD UNIT HAS BEEN APPROVED BY THE DIVISION.



¹⁶OPERATOR CERTIFICATION

I hereby certify that the information contained herein is true and complete to the best of my knowledge and belief.

Signature

Printed Name

C. Wade Howard

Position

Engineer's Assistant

Company

Texaco Expl. & Prod. Inc.

Date

October 8, 1996

¹⁷SURVEYOR CERTIFICATION

I hereby certify that the well location shown on this plat was plotted from field notes of actual surveys made by me or under my supervision, and that the same is true and correct to the best of my knowledge and belief.

Date Surveyed

October 7, 1996

Signature & Seal of
Professional Surveyor

Certificate No.

7254 John S. Piper

DRILLING PROGRAM

SKELLY UNIT WELL No. 901

SURFACE DESCRIPTION:

See Item 11 (other information) in the attached Surface Use and Operations Plan.

FORMATION TOPS: Estimated KB Elevation: 3805'

<u>Formation</u>	<u>Depth</u>	<u>Lithology</u>	<u>Fluid Content</u>
Rustler	600'	Anhy, Salt	----
Tansill	1570'	Anhy	----
Yates	1720'	Ss, Dolomite	----
Queen	2665'	Ss, Dolomite	Oil
Grayburg	3250'	Ss, Dolomite	----
San Andres	3730'	Dolo, Limestone	----
Paddock	5100'	Dolomite	Oil
Bone Springs	6960'	Sandstone	----
Abo	7350'	Dolomite	Oil
Wolfcamp	8500'	Limestone	Oil

The base of the salt section is the top of the Tansill at 1570'. No abnormal pressures or temperatures are anticipated to be encountered in this well. The Bottom Hole Pressure at T.D. is estimated to be 7.9 PPG EMW (3779 PSI).

H2S in the San Andres formation is possible. H2S RADIUS OF EXPOSURE: 100ppm = 199', 500ppm = 91', based on 4,300ppm H2S and 692 MCF (see attached H2S Drilling Operations Plan. H2S equipment to be operational prior to drilling out Surface Casing Shoe.)

Duration of Operations: 24 Days to Drill + 18 Days to Complete.

PRESSURE CONTROL EQUIPMENT:

A 3000 psi Dual Ram BOP with rotating head (See Exhibit C) will be installed after surface casing is set. We do not plan to have an annular preventer. We will be able to achieve full closure of the well with the double ram preventer. BOP will be tested each time it is installed on a casing string and at least every 29 days, and operated at least once each 24-hour period during drilling.

A PVT system will not be installed. We will be drilling thru the reserve pit and will circulate the steel pits one hour each tour to check for gains and losses and will be noted on the driller's log, which is Texaco's policy.

We do not plan to run an automatic remote-controlled choke. We will have installed and tested two manual, H2S trimmed, chokes