

DISTRICT I
P. O. Box 1980, Hobbs, NM 88240

DISTRICT II
P. O. Drawer DD, Artesia, NM 88210

DISTRICT III
1000 Rio Brazos Rd., Aztec, NM 87410

DISTRICT IV
P. O. Box 2088, Santa Fe, NM 87504-2088

State of New Mexico
Energy, Minerals and Natural Resources Department

OIL CONSERVATION DIVISION

PO Box 2088
Santa Fe, NM 87504-2088

Form C-102
Revised February 10, 1994

Instructions on back

Submit to Appropriate District Office

State Lease-4 copies
Fee Lease-3 copies

☐ AMENDED REPORT

WELL LOCATION AND ACREAGE DEDICATION PLAT

¹ API Number		² Pool Code		³ Pool Name Wildcat, ABO	
⁴ Property Code 11091		⁵ Property Name Skelly Unit			⁶ Well Number 903
⁷ OGRID No. 22351		⁸ Operator Name TEXACO EXPLORATION & PRODUCTION, INC.			⁹ Elevation 3838'

¹⁰ Surface Location

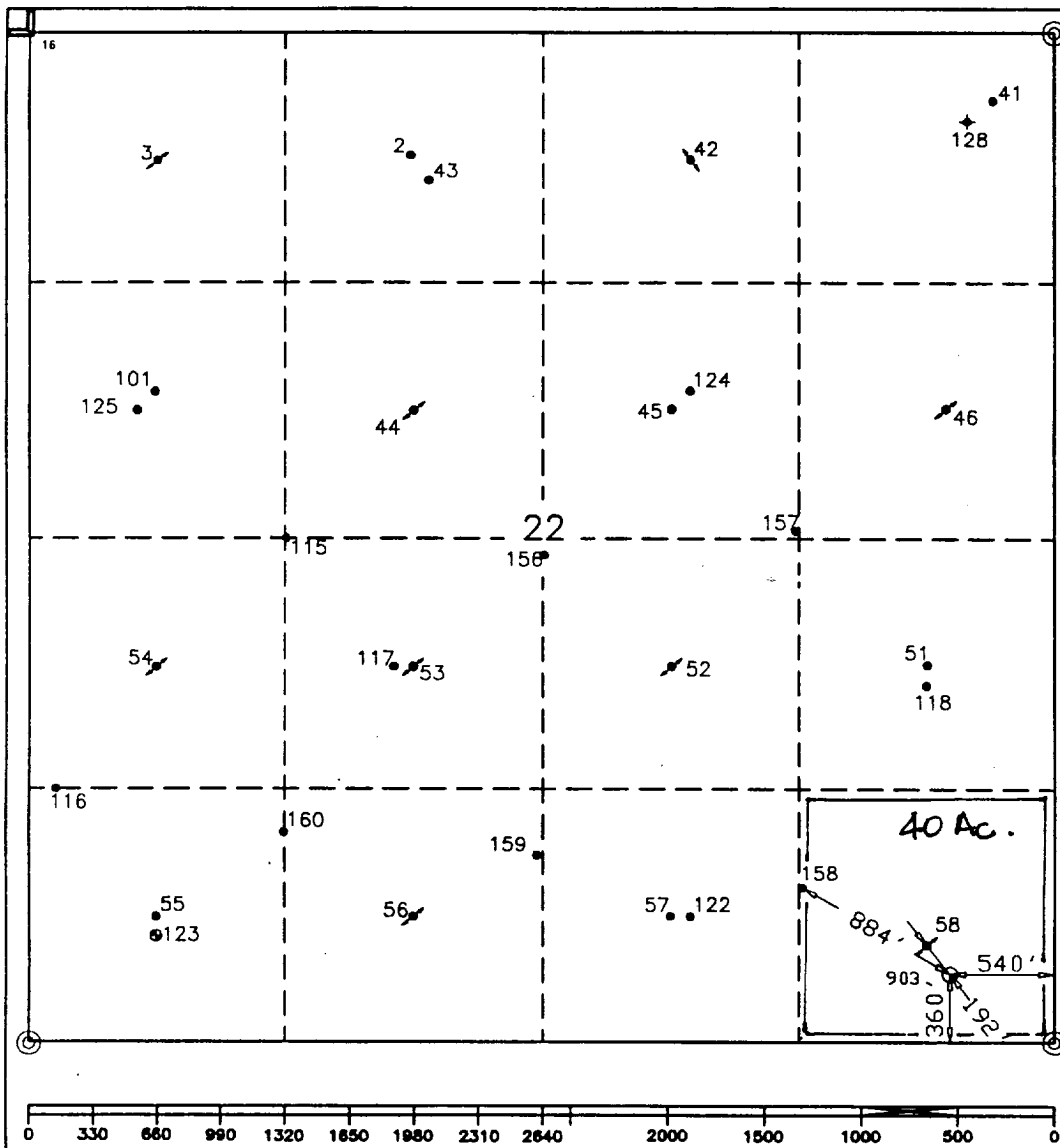
UL or lot no. P	Section 22	Township 17-S	Range 31-E	Lot Idn	Feet from the 360'	North/South line South	Feet from the 540'	East/West line East	⁷ County Eddy
--------------------	---------------	------------------	---------------	---------	-----------------------	---------------------------	-----------------------	------------------------	-----------------------------

¹¹ Bottom Hole Location If Different From Surface

UL or lot no.	Section	Township	Range	Lot Idn	Feet from the	North/South line	Feet from the	East/West line	⁷ County
---------------	---------	----------	-------	---------	---------------	------------------	---------------	----------------	---------------------

¹² Dedicated Acres 40	¹³ Joint or Infill	¹⁴ Consolidation Code	¹⁵ Order No.
-------------------------------------	-------------------------------	----------------------------------	-------------------------

NO ALLOWABLE WILL BE ASSIGNED TO THIS COMPLETION UNTIL ALL INTERESTS HAVE BEEN CONSOLIDATED
OR A NON-STANDARD UNIT HAS BEEN APPROVED BY THE DIVISION.



¹ OPERATOR CERTIFICATION

I hereby certify that the information contained herein is true and complete to the best of my knowledge and belief.

Signature

C. Wade Howard

Printed Name

C. Wade Howard

Position

Engineer's Assistant

Company

Texaco Expl. & Prod. Inc.

Date

January 27, 1997

¹⁶ SURVEYOR CERTIFICATION

I hereby certify that the well location shown on this plat was plotted from field notes of actual surveys made by me or under my supervision and that the same is true and correct to the best of my knowledge and belief.

Date Surveyed

January 23, 1997

Signature & Seal of
Professional Surveyor

Certificate No.

7254 John S. Piper

Sheet 8 of 8

○ = Staked Location ● = Producing Well ↗ = Injection Well ◇ = Water Supply Well ◆ = Plugged & Abandon Well