

DISTRICT I
P. O. Box 1980
Hobbs, NM 88241-1980

State of New Mexico
Energy, Minerals, and Natural Resources Department

Form G-102
Revised 02-10-94

Instructions on back

DISTRICT II
P. O. Drawer DD
Artesia, NM 88211-0719

OIL CONSERVATION DIVISION
P. O. Box 2088
Santa Fe, New Mexico 87504-2088

Submit to the Appropriate
District Office
State Lease - 4 copies
Fee Lease - 3 copies

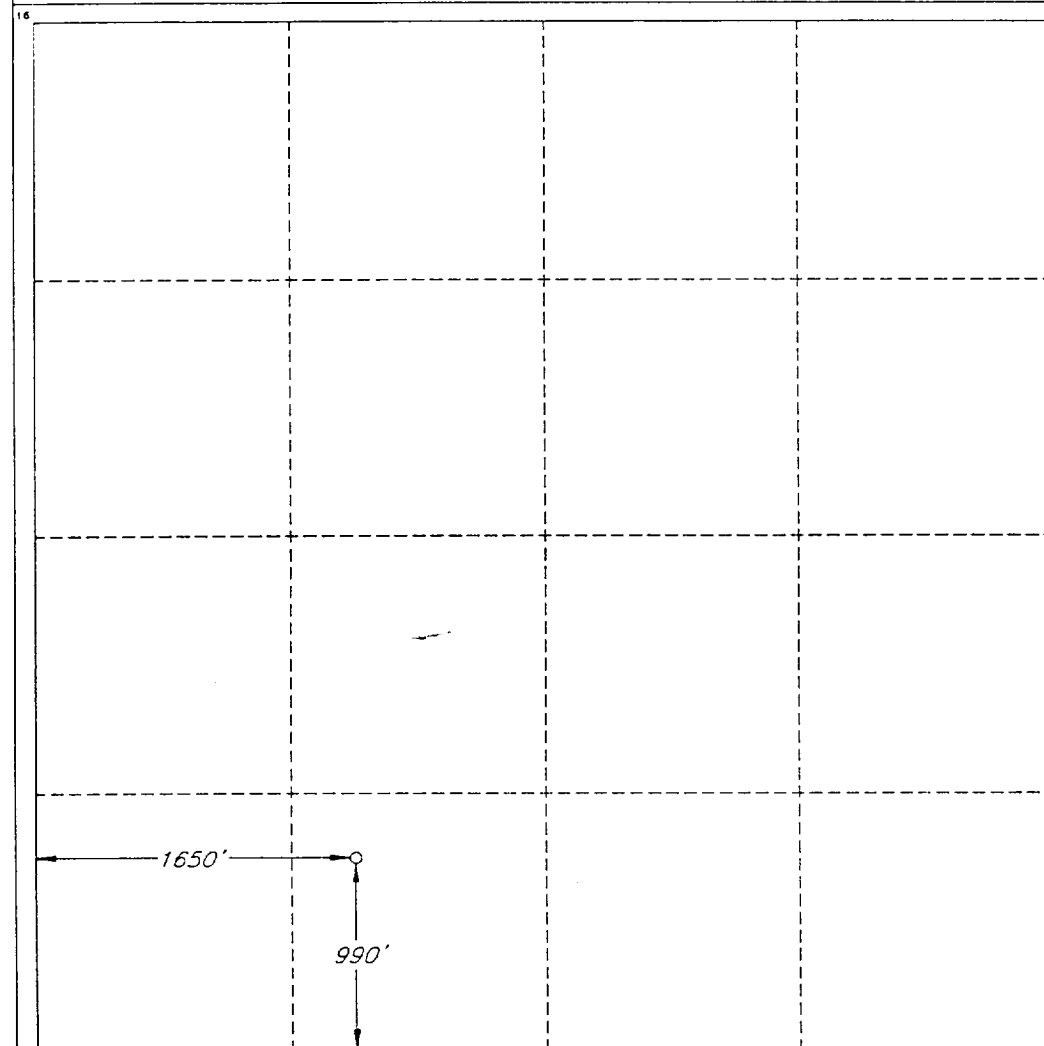
DISTRICT III
1000 Rio Brazos Rd.
Aztec, NM 87410

☐ AMENDED REPORT

DISTRICT IV
P. O. Box 2088
Santa Fe, NM 87507-2088

WELL LOCATION AND ACREAGE DEDICATION PLAT

1 API Number		2 Pool Code 77840		3 Pool Name Grayburg Morrow					
4 Property Code		5 Property Name GRAYBURG DEEP UNIT						6 Well Number 14	
7 OGRID No. 7377		8 Operator Name ENRON OIL & GAS COMPANY						9 Elevation 3571'	
10 SURFACE LOCATION									
UL or lot no. N	Section 25	Township 17 SOUTH	Range 29 EAST, N.M.P.M.	Lot Ida	Feet from the 990'	North/South line SOUTH	Feet from the 1650'	East/West line WEST	County EDDY
11 BOTTOM HOLE LOCATION IF DIFFERENT FROM SURFACE									
UL or lot no.	Section	Township	Range	Lot Ida	Feet from the	North/South line	Feet from the	East/West line	County
12 Dedicated Acres 320 S/2		13 Joint or Infill		14 Consolidation Code		15 Order No.			
NO ALLOWABLE WELL BE ASSIGNED TO THIS COMPLETION UNTIL ALL INTERESTS HAVE BEEN CONSOLIDATED OR A NON-STANDARD UNIT HAS BEEN APPROVED BY THE DIVISION									



OPERATOR CERTIFICATION

I hereby certify that the information contained herein is true and complete to the best of my knowledge and belief.

Signature

Printed Name

Betty Gildon

Title

Regulatory Analyst

Date

2/11/97

SURVEYOR CERTIFICATION

I hereby certify that the well location shown on this plat was plotted from field notes of actual surveys made by me or under my supervision, and that the same is true and correct to the best of my belief.

Date of Survey

JANUARY 3, 1996

Signature and Seal of Professional Surveyor

Certificate No.

ROGER M. ROBBINS P.S. #12128

JOB # 49163-3/ 99 SE / JSJ