

UNITED STATES
DEPARTMENT OF THE INTERIOR
BUREAU OF LAND MANAGEMENT

CONTRACT RECEIVING
OFFICE FOR NUMBER
OF COP REQUIRED
(Other locations on
reverse side)

30-015-29492

BLM Roswell District
Modified Form No.
M160-3160-2

APPLICATION FOR PERMIT TO DRILL, DEEPEN, OR PLUG BACK

1a. TYPE OF WORK

DRILL ☒

DEEPEN ☐

PLUG BACK ☐

b. TYPE OF WELL

OIL
WELL ☒

GAS
WELL ☐

OTHER

SINGLE
ZONE ☐

MULTIPLE
ZONE ☐

2. NAME OF OPERATOR

Marbob Energy Corporation

3a. Area Code & Phone No.

505-748-3303

3. ADDRESS OF OPERATOR

P. O. Box 221, Artesia, NM 88210

4. LOCATION OF WELL (Report location clearly and in accordance with any State requirements.)

At surface

2615 FNL 1980 FEL

At proposed prod. zone

SAME

Unit G

14. DISTANCE IN MILES AND DIRECTION FROM NEAREST TOWN OR POST OFFICE

EAST OF ARTESIA ON HWY 82 APPROX 20.7 MILES

10. DISTANCE FROM PROPOSED

LOCATION TO NEAREST

PROPERTY OR LEASE LINE, FT.

(Also to nearest drig. unit line, if any)

1980'

18. DISTANCE FROM PROPOSED LOCATION*

TO NEAREST WELL, DRILLING, COMPLETED,
OR APPLIED FOR, ON THIS LEASE, FT.

16. NO. OF ACRES IN LEASE

800

19. PROPOSED DEPTH

4800'

17. NO. OF ACRES ASSIGNED
TO THIS WELL

40

20. ROTARY OR CABLE TOOLS

ROTARY

21. ELEVATIONS (Show whether DF, RT, GR, etc.)

3595' GR

22. APPROX. DATE WORK WILL START*

APRIL 15, 1997

PROPOSED CASING AND CEMENT

HOLE SIZE	CASING SIZE	WEIGHT/FOOT	GRADE	THREAD TYPE	SETTING DEPTH	QUANTITY OF CEMENT
12 1/4"	8 5/8"	24#	J-55	LT&C	350'	CIRCULATE
7 7/8"	5 1/2"	17#	J-55	LT&C	4800'	CIRCULATE

PAY ZONE WILL BE SELECTIVELY PERFORATED AND STIMULATED AS
NEEDED FOR OPTIMUM PRODUCTION.

ATTACHED ARE: 1. LOCATION & DEDICATION PLAT
2. SUPPLEMENTAL DRILLING DATA
3. SURFACE USE PLAN

APPROVAL SUBJECT TO
GENERAL REQUIREMENTS AND
SPECIAL STIPULATIONS
ATTACHED

SUBJECT TO
STATE FOR
UNSATISFACTORY
LOCATION

PLEASE SEE MASTER SURFACE USE PLAN ON FILE AT BLM OFFICE

IN ABOVE SPACE DESCRIBE PROPOSED PROGRAM: If proposal is to deepen or plug back, give data on present productive zone and proposed new productive zone. If proposal is to drill or deepen directionally, give pertinent data on subsurface locations and measured and true vertical depths. Give blowout preventer program, if any.

24.

SIGNED

Production Clerk

DATE 3/7/97

(This space for Federal or State office use)

PERMIT NO.

APPROVAL DATE

ORIG. SGT. TONY L. FERGUSON

ADM. MINERALS

APPROVED BY

TITLE

DATE

CONDITIONS OF APPROVAL, IF ANY:

DISTRICT I
P.O. Box 1980, Hobbs, NM 88241-1980

State of New Mexico
Energy, Minerals and Natural Resources Department

Form C-102
Revised February 10, 1994
Submit to Appropriate District Office
State Lease - 4 Copies
Fee Lease - 3 Copies

DISTRICT II
P.O. Drawer DD, Artesia, NM 88211-0719

DISTRICT III
1000 Rio Brazos Rd., Aztec, NM 87410

DISTRICT IV
P.O. BOX 2088, SANTA FE, N.M. 87504-2088

OIL CONSERVATION DIVISION
P.O. Box 2088

Santa Fe, New Mexico 87504-2088

☐ AMENDED REPORT

WELL LOCATION AND ACREAGE DEDICATION PLAT

API Number	Pool Code	Pool Name
	28509	GRBG JACKSON SR Q GRBG SA
Property Code	Property Name	Well Number
6497	BURCH KEELY UNIT	843
OGRID No.	Operator Name	Elevation
14049	MARBOB ENERGY COPORATION	3595'

Surface Location

UL or lot No.	Section	Township	Range	Lot Idn	Feet from the	North/South line	Feet from the	East/West line	County
G	23	17 S	29 E		2615	NORTH	1980	EAST	EDDY

Bottom Hole Location If Different From Surface

UL or lot No.	Section	Township	Range	Lot Idn	Feet from the	North/South line	Feet from the	East/West line	County

Dedicated Acres	Joint or Infill	Consolidation Code	Order No.
40			

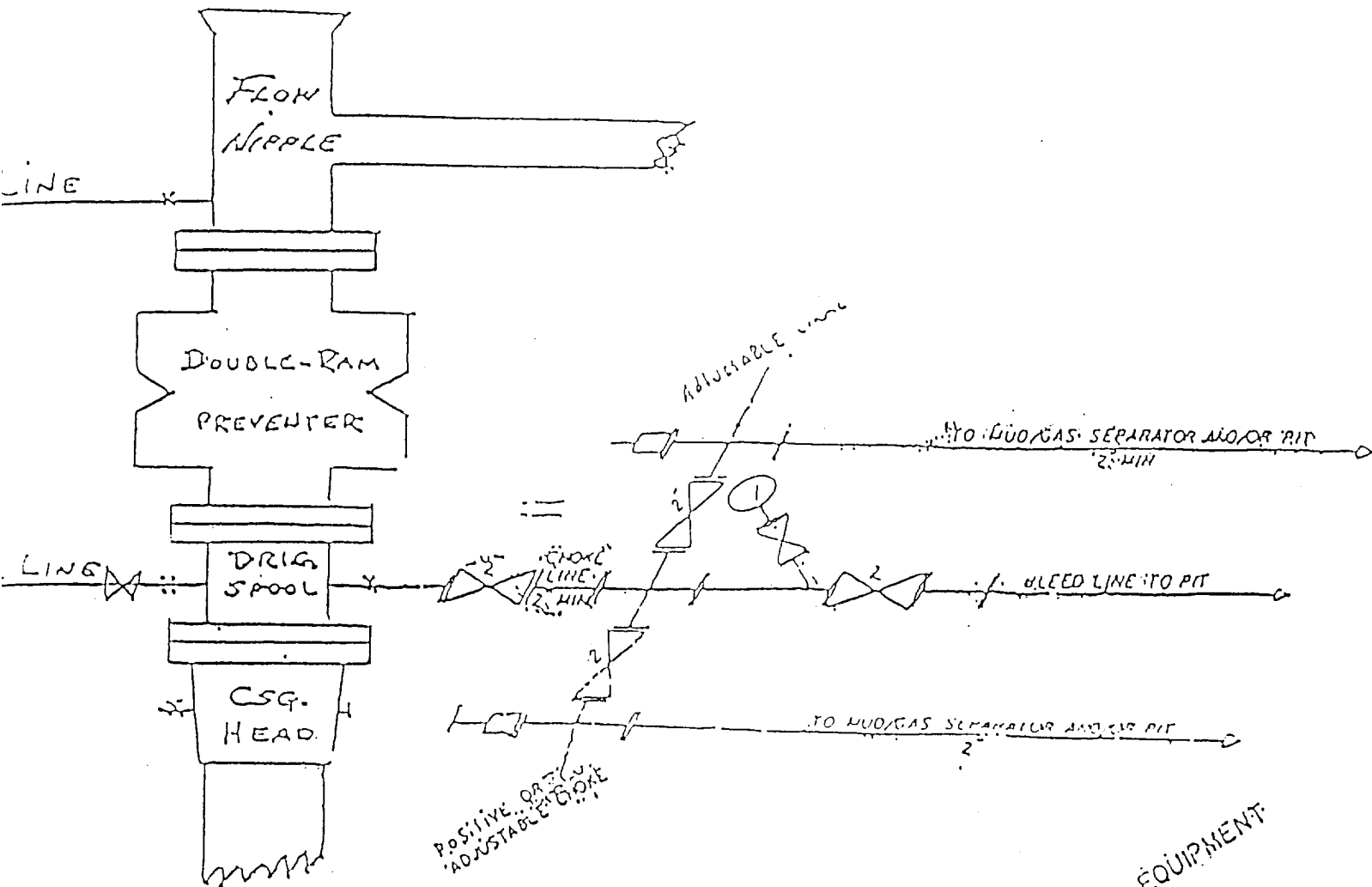
NO ALLOWABLE WILL BE ASSIGNED TO THIS COMPLETION UNTIL ALL INTERESTS HAVE BEEN CONSOLIDATED
OR A NON-STANDARD UNIT HAS BEEN APPROVED BY THE DIVISION

	<p>OPERATOR CERTIFICATION</p> <p>I hereby certify the the information contained heretn is true and complete to the best of my knowledge and belief.</p> <p><i>Rhonda Nelson</i> Signature</p> <p>RHONDA NELSON Printed Name</p> <p>PRODUCTION CLERK Title</p> <p>3/6/97 Date</p> <p>SURVEYOR CERTIFICATION</p> <p>I hereby certify that the well location shown on this plat was plotted from field notes of actual surveys made by me or under my supervision, and that the same is true and correct to the best of my belief.</p> <p>FEBRUARY 20, 1997</p> <p>Date Surveyed CDG</p> <p>Signature & Seal of Professional Surveyor</p> <p><i>Ronald J. Edison</i> 3239 2-24-97 9-11-03524</p> <p>Certificate No. JOHN W. WEST 676 RONALD J. EDISON 3239 GARY EDISON 12641</p>
--	---

EXHIBIT #1

B O P & CHOKE MANIFOLD

10"/900 Cameron SS Space Saver
3000# Working Pressure
3000# Working Pressure Choke Manifold



2 1/4 CHOKE MANIFOLD EQUIPMENT

MARBOB ENERGY CORPORATION

Burch Keely Unit No. 843
2615' FNL and 1980' FEL
Section 23-17S-29E
Eddy County, New Mexico
Exhibit #1

Attachment to Exhibit #1
NOTES REGARDING THE BLOWOUT PREVENTERS

1. Drilling nipple to be so constructed that it can be removed without use of a welder through rotary table opening, with minimum I.D. equal to preventer bore.
2. Wear ring to be properly installed in head.
3. Blow out preventer and all fittings must be in good condition, 3000 psi W.P. minimum.
4. All fittings to be flanged.
5. Safety valve must be available on rig floor at all times with proper connections, valve to be full bore 3000 psi W.P. minimum.
6. All choke and fill lines to be securely anchored, especially ends of choke lines.
7. Equipment through which bit must pass shall be at least as large as the diameter of the casing being drilled through.
8. Kelly cock on kelly.
9. Extension wrenches and hand wheels to be properly installed.
10. Blow out preventer control to be located as close to driller's position as feasible.
11. Blow out preventer closing equipment to include minimum 40 gallon accumulator, two independent sources of pump power on each closing unit installation, and meet all API specifications.