

UNITED STATES
DEPARTMENT OF THE INTERIOR
BUREAU OF LAND MANAGEMENT

APPLICATION FOR PERMIT TO DRILL, DEEPEN, OR PLUG BACK

1a. TYPE OF WORK

DRILL ☒

DEEPEN ☐

PLUG BACK ☐

b. TYPE OF WELL

OIL WELL ☒

GAS WELL ☐

OTHER ☐

SINGLE ZONE ☐

MULTIPLE ZONE ☐

2. NAME OF OPERATOR

Marbob Energy Corporation

121049

3a. Area Code & Phone No.

505-748-3303

3. ADDRESS OF OPERATOR

P. O. BOX 227

Artesia,

**SUBJECT TO
LIKE APPROVAL
BY STATE**

4. LOCATION OF WELL (Report location clearly and in accordance with any State requirements.)

2615 FNL 1980 FEL
At proposed prod. zone
SAME

14. DISTANCE IN MILES AND DIRECTION FROM NEAREST TOWN OR POST OFFICE

EAST OF ARTESIA ON HWY 82 APPROX 20.7 MILES

15. DISTANCE FROM PROPOSED*
LOCATION TO NEAREST
PROPERTY OR LEASE LINE, FT.

(Also to nearest drlg. unit line, if any) 1980'

18. DISTANCE FROM PROPOSED LOCATION*
TO NEAREST WELL, DRILLING, COMPLETED,
OR APPLIED FOR, ON THIS LEASE, FT.

16. NO. OF ACRES IN LEASE

800

17. NO. OF ACRES ASSIGNED
TO THIS WELL

40

21. ELEVATIONS (Show whether DF, RT, GR, etc.)

3595' GR

ROTARY

22. APPROX. DATE WORK WILL START*

12/1/98

PROPOSED CASING AND CEMENTING PROGRAM

HOLE SIZE	CASING SIZE	WEIGHT/FOOT	GRADE	THREAD TYPE	SETTING DEPTH	QUANTITY OF CEMENT
12 1/4"	8 5/8"	24#	J-55	ST&C 350'	350' 400'	WITNESS CIRC
7 7/8"	5 1/2"	17#	J-55	LT&C	4800'	SUFFICIENT TO COVER ALL OIL & GAS HORIZONS

PAY ZONE WILL BE SELECTIVELY PERFORATED AND STIMULATED AS
NEEDED FOR OPTIMUM PRODUCTION.

ATTACHED ARE: 1. WELL LOCATION AND ACREAGE DEDICATION PLAT
2. SUPPLEMENTAL DRILLING DATA
3. SURFACE USE PLAN

MASTER SURFACE USE PLAN ON FILE AT BLM ROSWELL

** THIS APD WAS PREVIOUSLY APPROVED ON 4/8/98
**APPROVAL SUBJECT TO
GENERAL REQUIREMENTS AND
SPECIAL STIPULATIONS**

IN ABOVE SPACE DESCRIBE PROPOSED PROGRAM: If proposal is to deepen or plug back, give data on present productive zone and proposed new productive zone. If proposal is to drill or deepen directionally, give pertinent data on subsurface locations and measured and true vertical depths. Give blowout preventer program, if any.

SIGNED Phonda Nelson TITLE Production Clerk

DATE 10/28/98

(This space for Federal or State office use)

PERMIT NO.

Acting Assistant Field Office Manager,
Lands and Minerals

APPROVED BY (ORIG. SGD.) ARMANDO A. LOPEZ

TITLE

DATE

12/14/98

CONDITIONS OF APPROVAL, IF ANY:

*See Instructions On Reverse Side

1000
1465-1

DISTRICT I
P.O. Box 1980, Hobbs, NM 88241-1980

DISTRICT II
P.O. Drawer DD, Artesia, NM 88211-0719

DISTRICT III
1000 Rio Brazos Rd., Aztec, NM 87410

DISTRICT IV
P.O. BOX 2088, SANTA FE, N.M. 87504-2088

State of New Mexico
Energy, Minerals and Natural Resources Department

Form C-102
Revised February 10, 1994
Submit to Appropriate District Office
State Lease - 4 Copies
Fee Lease - 3 Copies

OIL CONSERVATION DIVISION
P.O. Box 2088
Santa Fe, New Mexico 87504-2088

☐ AMENDED REPORT

WELL LOCATION AND ACREAGE DEDICATION PLAT

API Number	Pool Code 28509	Pool Name GRBG JACKSON SR Q GRBG SA
Property Code 6497	Property Name BURCH KEELY UNIT	Well Number 843
OGRID No. 14049	Operator Name MARBOB ENERGY COPORATION	Elevation 3595'

Surface Location

UL or lot No. G	Section 23	Township 17 S	Range 29 E	Lot Idn	Feet from the 2615	North/South line NORTH	Feet from the 1980	East/West line EAST	County EDDY
--------------------	---------------	------------------	---------------	---------	-----------------------	---------------------------	-----------------------	------------------------	----------------

Bottom Hole Location If Different From Surface

UL or lot No.	Section	Township	Range	Lot Idn	Feet from the	North/South line	Feet from the	East/West line	County
Dedicated Acres 40	Joint or Infill	Consolidation Code	Order No.						

NO ALLOWABLE WILL BE ASSIGNED TO THIS COMPLETION UNTIL ALL INTERESTS HAVE BEEN CONSOLIDATED
OR A NON-STANDARD UNIT HAS BEEN APPROVED BY THE DIVISION

				<p>OPERATOR CERTIFICATION</p> <p>I hereby certify the the information contained herein is true and complete to the best of my knowledge and belief.</p> <p><i>Rhonda Nelson</i> Signature</p> <p><u>RHONDA NELSON</u> Printed Name</p> <p><u>PRODUCTION CLERK</u> Title</p> <p><u>10/28/98</u> Date</p>
<p>SURVEYOR CERTIFICATION</p> <p>I hereby certify that the well location shown on this plat was plotted from field notes of actual surveys made by me or under my supervision and that the same is true and correct to the best of my belief.</p> <p><u>FEBRUARY 20, 1997</u> Date Surveyed</p> <p><u>CDG</u> Signature & Seal of Professional Surveyor</p> <p><i>Ronald J. Edson</i> Professional Surveyor</p> <p><u>224-97</u> Certificate No.</p> <p><u>JOHN W. WEST</u> RONALD J. EDSON GARY EDSON</p> <p>676 3239 12641</p>				

DRILLING PROGRAM

Burch Keely Unit No. 843
2615' FNL and 1980' FEL
Section 23-17S-29E
Eddy County, New Mexico

10. Anticipated Starting Date and Duration of Operations

Spud Date: Approximately December 1, 1998

Duration of Operations: Once commenced, the drilling operations should be completed in approximately 21 days. If the well is productive, an additional 30 to 60 days will be required for completion and testing of the well.

SURFACE USE AND OPERATING PLAN

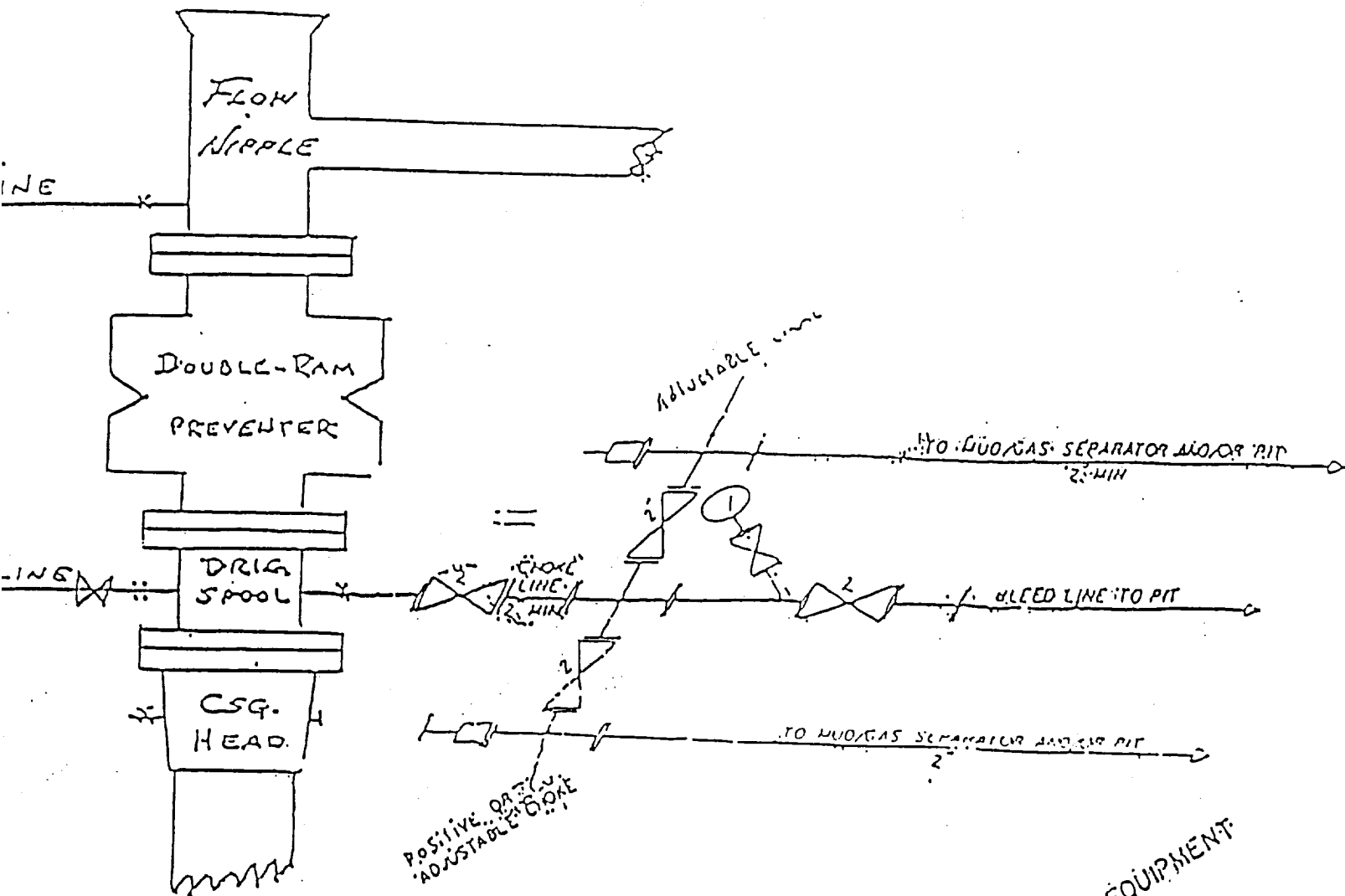
Burch Keely Unit No. 843
2615' FNL and 1980' FEL
Section 23-17S-29E
Eddy County, New Mexico

- 1.(c) Directions to Locations: Proceed east on U.S. 82 from Artesia for approximately 20.7 miles. Turn south on Three Trees lease road. Then, turn west and proceed .1 mile. The lease road runs through the locations.
- 4.(a) If productive, this well will use Satellite "E".

EXHIBIT #1

B U P & CHOKE MANIFOLD

10"/900 Cameron SS Space Saver
3000# Working Pressure
3,000# Working Pressure Choke Manifold



2 1/4\"/>

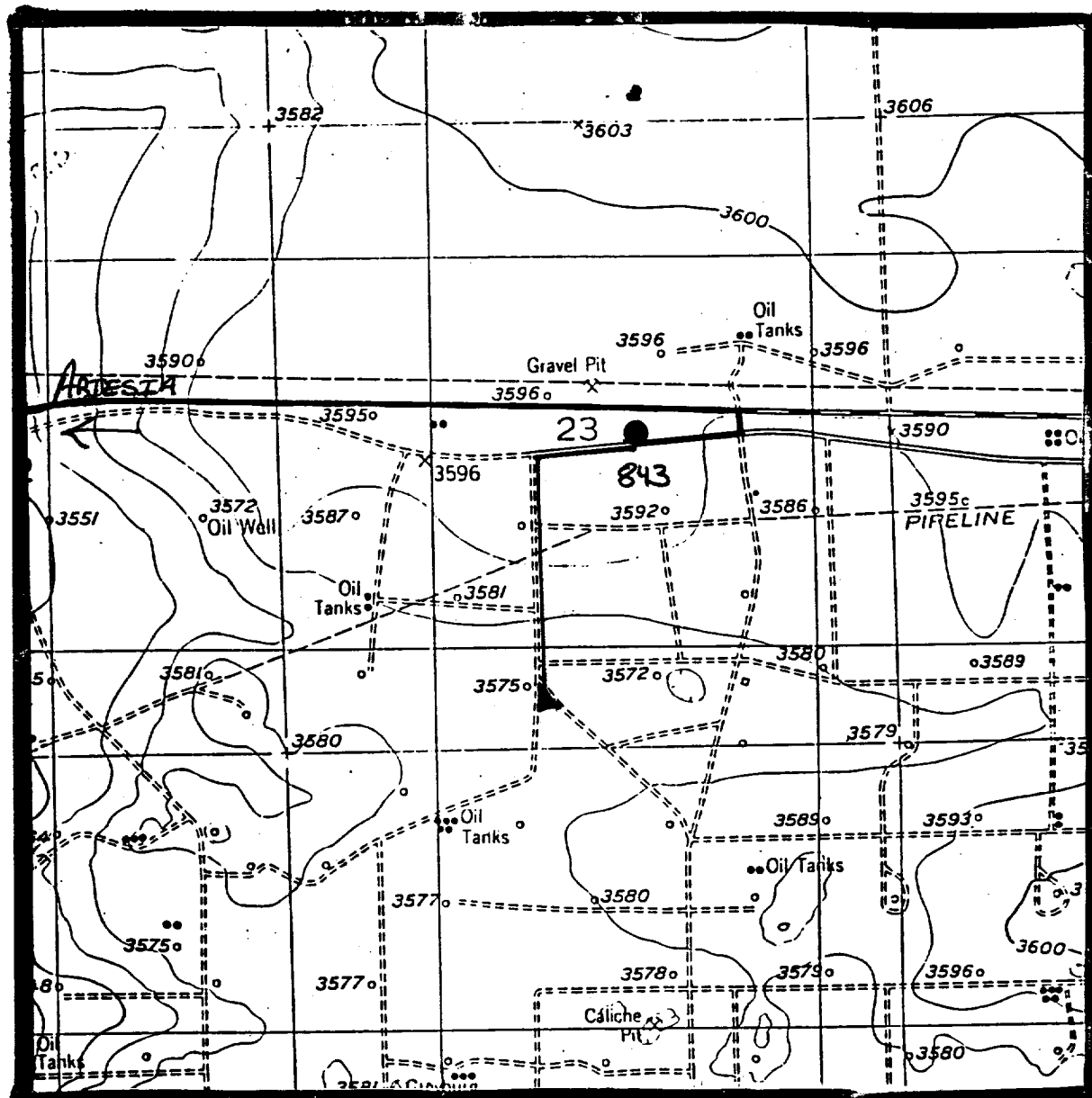
MARBOB ENERGY CORPORATION

Burch Keely Unit No. 843
2615' FNL and 1980' FEL
Section 23-17S-29E
Eddy County, New Mexico
Exhibit #1

Attachment to Exhibit #1
NOTES REGARDING THE BLOWOUT PREVENTERS

1. Drilling nipple to be so constructed that it can be removed without use of a welder through rotary table opening, with minimum I.D. equal to preventer bore.
2. Wear ring to be properly installed in head.
3. Blow out preventer and all fittings must be in good condition, 3000 psi W.P. minimum.
4. All fittings to be flanged.
5. Safety valve must be available on rig floor at all times with proper connections, valve to be full bore 3000 psi W.P. minimum.
6. All choke and fill lines to be securely anchored, especially ends of choke lines.
7. Equipment through which bit must pass shall be at least as large as the diameter of the casing being drilled through.
8. Kelly cock on kelly.
9. Extension wrenches and hand wheels to be properly installed.
10. Blow out preventer control to be located as close to driller's position as feasible.
11. Blow out preventer closing equipment to include minimum 40 gallon accumulator, two independent sources of pump power on each closing unit installation, and meet all API specifications.

UCAL 1-1-1971



MARBOB ENERGY CORPORATION

Burch Keely Unit No. 843
 2615' FNL and 1980' FEL
 Section 23-17S-29E
 Eddy County, New Mexico
 Exhibit #3

1. The first part of the document is a letter from the President of the United States to the Congress, dated January 1, 1861. It is a very important document, as it sets out the President's policy for the new year. The letter is written in a very formal and dignified style, and it is a very good example of the President's power and authority.

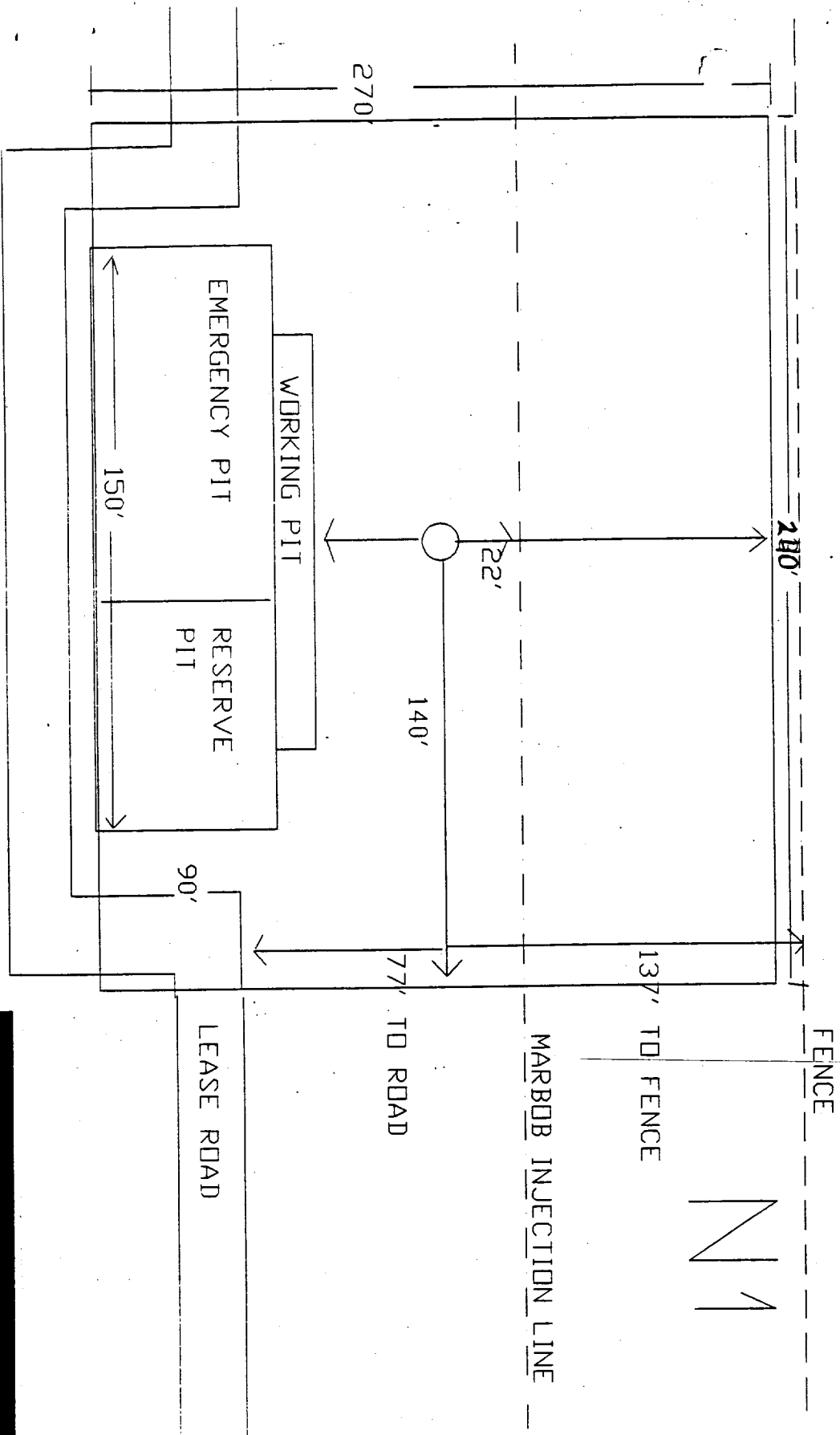
2.

3. The second part of the document is a letter from the President to the Congress, dated January 1, 1861. It is a very important document, as it sets out the President's policy for the new year. The letter is written in a very formal and dignified style, and it is a very good example of the President's power and authority.

**Burch Keely Unit No. 843
2615' FNL and 1980' FEL
Section 23-17S-29E
Eddy County, New Mexico
Exhibit #4**



Figure 1. The effect of the concentration of the *Agrobacterium* suspension on the transformation efficiency of *Agrobacterium* strains.



MARBOB ENERGY

BURCH-KEELY UNIT #843
 2615' FNL & 1980' FLL
 SEC. 23-T17S-R29E
 EDDY COUNTRY, NW MICHIGAN