

UNITED STATES
DEPARTMENT OF THE INTERIOR
BUREAU OF LAND MANAGEMENT

APPLICATION FOR PERMIT TO DRILL, DEEPEN, OR PLUG BACK

1a. TYPE OF WORK

DRILL ☒

DEEPEN ☐

PLUG BACK ☐

b. TYPE OF WELL

OIL WELL ☒

GAS WELL ☐

OTHER ☐

SINGLE ZONE ☐

MULTIPLE ZONE ☐

2. NAME OF OPERATOR

Marbob Energy Corporation

14049

3a. Area Code & Phone No.

505-748-3303

3. ADDRESS OF OPERATOR

P. O. Drawer, Artesia, NM 88210

4. LOCATION OF WELL (Report location clearly and in accordance with any State requirements.)*

At surface 2378 FSL 290 FWL

At proposed prod. zone SAME

SUBJECT TO
LIKE APPROVAL
BY STATE

Unit 1013

14. DISTANCE IN MILES AND DIRECTION FROM NEAREST TOWN OR POST OFFICE*

EAST FROM ARTESIA ON U.S. 82 APPROX. 23.2 MILES

10. DISTANCE FROM PROPOSED*

LOCATION TO NEAREST PROPERTY OR LEASE LINE, FT. (Also to nearest drlg. unit line, if any)

290'

16. NO. OF ACRES IN LEASE

640

17. NO. OF ACRES ASSIGNED TO THIS WELL

40

19. DISTANCE FROM PROPOSED LOCATION*

TO NEAREST WELL, DRILLING, COMPLETED, OR APPLIED FOR, ON THIS LEASE, FT.

19. PROPOSED DEPTH

4800'

20. ROTARY OR CABLE TOOLS

ROTARY

21. ELEVATIONS (Show whether DF, RT, GR, etc.)

3625' GR

22. APPROX. DATE WORK WILL START*

AUGUST 15, 1997

PROPOSED CASING AND CEMENT PROGRAM

HOLE SIZE	CASING SIZE	WEIGHT/FOOT	GRADE	THREAD TYPE	SETTING DEPTH	QUANTITY OF CEMENT
12 1/4"	8 5/8"	24#	J-55	STC	350-400'	CIRCULATE BUSINESS
7 7/8"	5 1/2"	17#	J-55	LTC	4800'	CIRCULATE

PAY ZONE WILL BE SELECTIVELY PERFORATED AND STIMULATED AS NEEDED FOR OPTIMUM PRODUCTION.

ATTACHED ARE: 1. LOCATION & ACREAGE DEDICATION PLAN
2. SUPPLEMENTAL DRILLING DATA
3. SURFACE USE PLAN

SEE MASTER SURFACE USE PLAN ON FILE AT BLM - ROSWELL

APPROVAL SUBJECT TO
GENERAL REQUIREMENTS AND
SPECIAL STIPULATIONS
ATTACHED

IN ABOVE SPACE DESCRIBE PROPOSED PROGRAM: If proposal is to deepen or plug back, give data on present productive zone and proposed new productive zone. If proposal is to drill or deepen directionally, give pertinent data on subsurface geology and measured and true vertical depths. Give blowout preventer program, if any.

24.

SIGNED

Phonda Nelson

TITLE Production Clerk

DATE

6/6/97

(This space for Federal or State office use)

PERMIT NO.

(ORIG. SGD.) ARMANDO A. LOPEZ

APPROVAL DATE

APPROVED BY

CONDITIONS OF APPROVAL, IF ANY:

TITLE

Acting ADM, MINERALS

DATE

7-9-97

LOT 1	37.43 AC.				
LOT 2	37.43 AC.				
LOT 3	37.41 AC.				
LOT 4	37.41 AC.				

OPERATOR CERTIFICATION

I hereby certify the the information contained herein is true and complete to the best of my knowledge and belief.

Rhonda Nelson
Signature

RHONDA NELSON
Printed Name

PRODUCTION CLERK
Title

6/6/97
Date

SURVEYOR CERTIFICATION

I hereby certify that the well location shown on this plat was plotted from field notes of actual surveys made by me or under my supervision, and that the same is true and correct to the best of my belief.

MAY 7, 1997

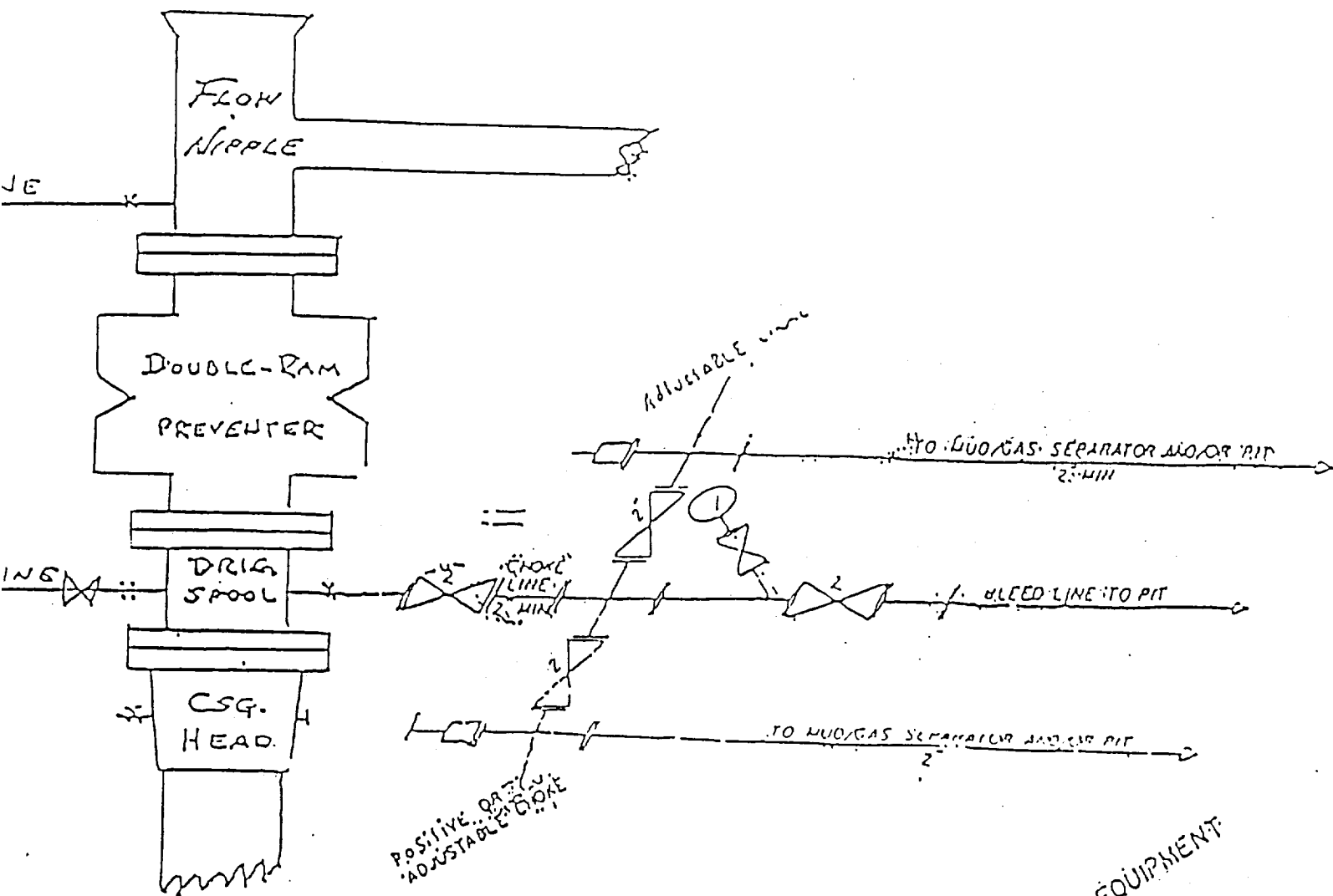
Date Surveyed JLP

Signature & Seal of Professional Surveyor.

Certificate No. JOHNNY WEST, 676
 RONALD E. EIDSON, 3239
 RONALD E. EIDSON, 12641

2 1/4" P & CHOKE MANIFOLD

10"/900 Cameron SS Space Saver
 3000# Working Pressure
 3000# Working Pressure Choke Manifold



2 1/4" CHOKE MANIFOLD EQUIPMENT

Marbob Energy Corporation

Burch Keely Unit No. 850
 2378' FSL and 290' FWL
 Section 19-17S-30E
 Eddy County, New Mexico
 Exhibit #1