

UNITED STATES
DEPARTMENT OF THE INTERIOR
BUREAU OF LAND MANAGEMENT
7/07/97 JP
7-2-97 ALM

APPLICATION FOR PERMIT TO DRILL, DEEPEN, OR PLUG BACK

1a. TYPE OF WORK
DRILL ☒ DEEPEN ☐ PLUG BACK ☐

b. TYPE OF WELL
OIL WELL ☒ GAS WELL ☐ OTHER ☐

2. NAME OF OPERATOR
Marbob Energy Corporation 140419 - 4 1997

3. ADDRESS OF OPERATOR
P. O. BOX 227, Artesia, NM 88210

4. LOCATION OF WELL (Report location clearly and in accordance with the State requirements.)
At surface 1295 FSL 330 FEL
At proposed prod. zone SAME

5. AREA CODE & PHONE NO.
505-748-3303

6. DISTANCE IN MILES AND DIRECTION FROM NEAREST TOWN OR POST OFFICE
EAST OF ARTESIA ON HWY 82 APPROX. 23.9 MILES

7. DISTANCE FROM PROPOSED LOCATION TO NEAREST PROPERTY OR LEASE LINE, FT.
(Also to nearest drlg. unit line, if any) 330'

8. DISTANCE FROM PROPOSED LOCATION TO NEAREST WELL, DRILLING, COMPLETED, OR APPLIED FOR, ON THIS LEASE, FT.
716'

9. NO. OF ACRES IN LEASE
640 ACRES

10. PROPOSED DEPTH
4800'

11. ELEVATIONS (Show whether DF, RT, GR, etc.)
3645.3'

12. APPROX. DATE WORK WILL START
AUGUST 1, 1997

PROPOSED CASING AND CEMENTING PROGRAM

PIPE SIZE	CASING SIZE	WEIGHT/FOOT	GRADE	THREAD TYPE	SETTING DEPTH	QUANTITY OF CEMENT
2 1/4"	8 5/8"	24#	J-55	STC	350'	300 SX
7 7/8"	5 1/2"	17#	J-55	LTC	1100'	1100 SX

PAY ZONE WILL BE SELECTIVELY PERFORATED AND STIMULATED AS NEEDED FOR OPTIMUM PRODUCTION.

ATTACHED ARE: 1. LOCATION & ACREAGE DEDICATION PLAT
2. SUPPLEMENTAL DRILLING DATA
3. SURFACE USE PLAN

PLEASE SEE MASTER SURFACE USE PLAN ON FILE AT BLM OFFICE

**THIS WAS PREVIOUSLY APPROVED AS BURCH AA FEDERAL #38

Exp Int

IN ABOVE SPACE DESCRIBE PROPOSED PROGRAM: If proposal is to deepen or plug back, give data on present productive zone and proposed new productive zone. If proposal is to drill or deepen directionally, give pertinent data on subsurface locations and measured and true vertical depths. Give blowout preventer program, if any.

SIGNED Rhonda Nelson TITLE Production Clerk DATE 6/26/97

(This space for Federal or State office use)

PERMIT NO. (ORIG. SGD.) TONY L. FERGUSON APPROVAL DATE

APPROVED BY ADM. MINERALS DATE 8/1/97

CONDITIONS OF APPROVAL, IF ANY:

NSL -

*See Instructions On Reverse Side

157

5. LEASE DESIGNATION AND SERIAL NO.
LC-028793A

6. IF INDIAN, ALLOTTEE OR TRIBE NAME

7. UNIT AGREEMENT NAME
BURCH KEELY UNIT 6497

8. FARM OR LEASE NAME
30-15-29774

9. WELL NO.
860

10. FIELD AND POOL, OR WILDCAT
GRBG JACKSON SR Q GRBG SA

11. SEC., T., R., M., OR BLK. AND SURVEY OR AREA
SEC. 18-T17S-R30E 28509

12. COUNTY OR PARISH
EDDY

13. STATE
NM

Posted 10-1
NLC API
8-8-97

BUREAU OF LAND MGMT.
ROSWELL OFFICE

1997 JUL -2 A 9:16
RECEIVED

OIL CONSERVATION DIVISION

DISTRICT I
P.O. Box 1980, Hobbs, NM 88240

P.O. Box 2088

Santa Fe, New Mexico 87504-2088

DISTRICT II
P.O. Drawer DD, Artesia, NM 88210

DISTRICT III
1000 Rio Brazos Rd., Artec, NM 87410

WELL LOCATION AND ACREAGE DEDICATION PLAT

All Distances must be from the outer boundaries of the section

Operator (14049) MARBOB ENERGY CORPORATION			Lease BURCH KEELY UNIT (PROP #6497)		Well No. 860
Unit Letter P	Section 18	Township 17 SOUTH	Range 30 EAST	County EDDY	

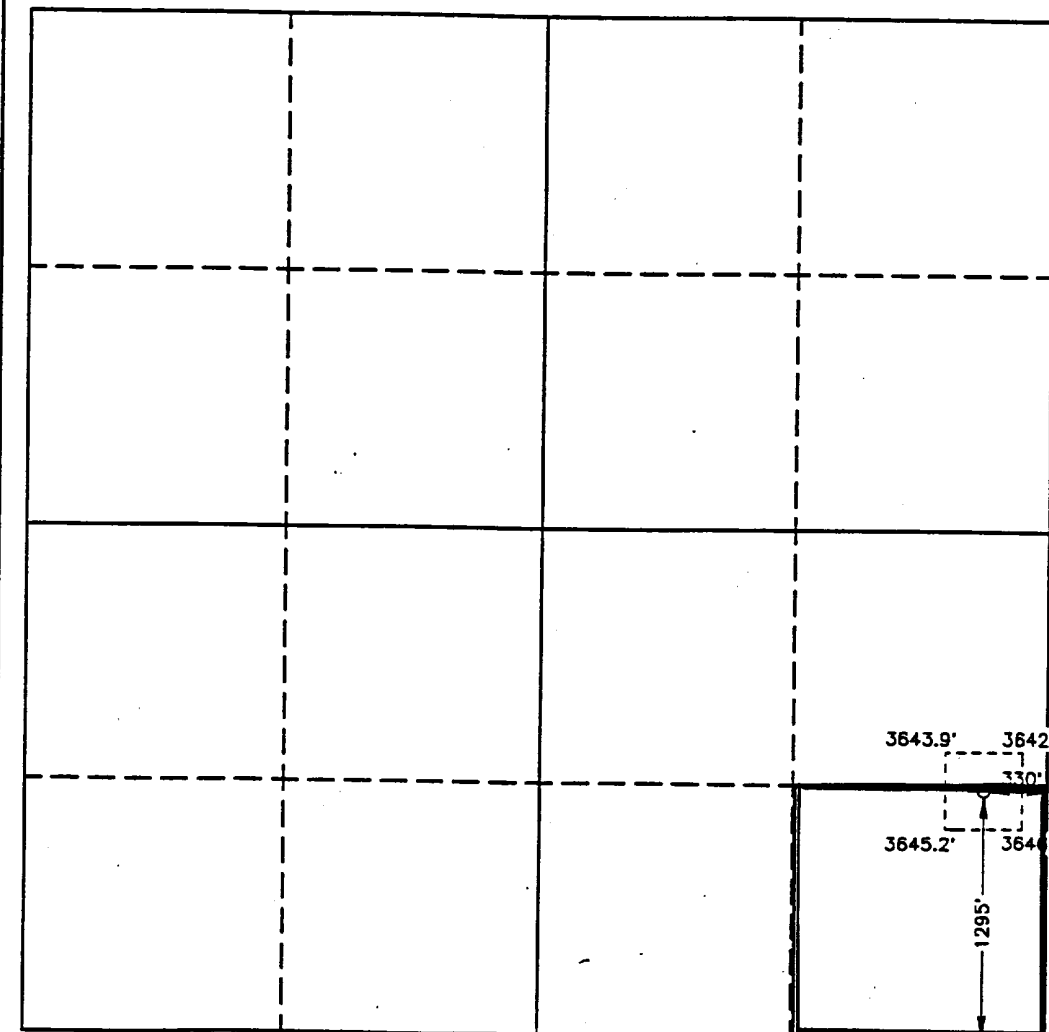
Actual Footage Location of Well:

1295 feet from the SOUTH line and		330 feet from the EAST line	
Ground Level Elev. 3645.3'	Producing Formation Grayburg San Andres	Pool (POOL # 28509) Grbg Jackson SR Q Grbg SA	Dedicated Acreage: 40 Acres

- Outline the acreage dedicated to the subject well by colored pencil or hatchure marks on the plat below.
- If more than one lease is dedicated to the well, outline each and identify the ownership thereof (both as to working interest and royalty).
- If more than one lease of different ownership is dedicated to the well, have the interest of all owners been consolidated by communitization, unitization, force-pooling, etc.?
☐ Yes ☐ No If answer is "yes" type of consolidation _____

If answer is "no" list of owners and tract descriptions which have actually been consolidated. (Use reverse side of this form necessary.)

No allowable will be assigned to the well unit all interests have been consolidated (by communitization, unitization, forced-pooling, otherwise) or until a non-standard unit, eliminating such interest, has been approved by the Division.



OPERATOR CERTIFICATION

I hereby certify the the information contained herein is true and complete to the best of my knowledge and belief.

Signature
Rhonda Nelson
Printed Name
Rhonda Nelson
Position
Production Clerk
Company
Marbob Energy Corporation
Date
6/26/97

SURVEYOR CERTIFICATION

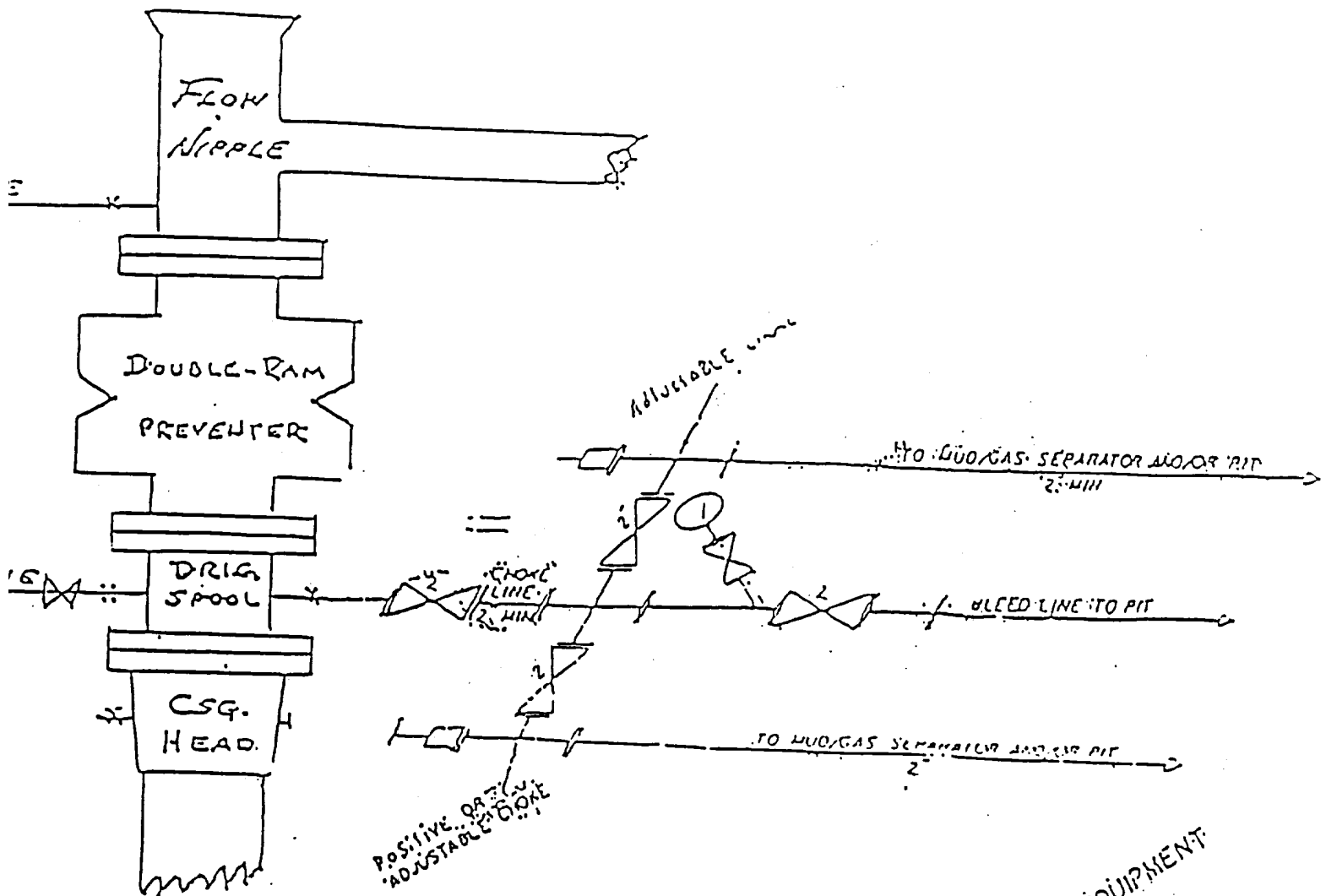
I hereby certify that the well location shown on this plat was plotted from field notes of actual surveys made by me or under my supervision, and that the same is true and correct to the best of my knowledge and belief.

Date Surveyed
JUNE 2, 1993

Signature & Seal of
Professional Surveyor

GARY L. JONES
NEW MEXICO
Certification No. JOHN W. WEST, 676
RONALD J. EDSON, 3239
GARY L. JONES, 7977

10"/900 Cameron SS Space Saver
3000# Working Pressure
3.000# Working Pressure Choke Manifold



**Burch Keely Unit No. 860
1295' FSL and 330' FEL
Section 18-17S-30E
Eddy County, New Mexico
Exhibit #1**

214 CHOKE MANIFOLD EQUIPMENT