

UNITED STATES
DEPARTMENT OF THE INTERIOR
BUREAU OF LAND MANAGEMENT

CONTACT RECEIVING
OFFICE FOR NUMBER
OF COPIES REQUIRED
(Other instructions on
reverse side)

BLM Roswell District
Modified Form No.
NND60-3160-2

45F

APPLICATION FOR PERMIT TO DRILL, DEEPEN, OR PLUG BACK

1a. TYPE OF WORK

DRILL ☒

DEEPEN ☐

PLUG BACK ☐

b. TYPE OF WELL

OIL
WELL ☒

GAS
WELL ☐

OTHER ☐

2. NAME OF OPERATOR

Marbob Energy Corporation

3. ADDRESS OF OPERATOR

P. O. BOX 227 Artesia, NM 88210

4. LOCATION OF WELL (Report location clearly and in accordance with instructions.)

At surface

1295 FSL 1345 FEL

UNIT 0

At proposed prod. zone

SAME

14. DISTANCE IN MILES AND DIRECTION FROM NEAREST TOWN OR POST OFFICE

EAST OF ARTESIA ON U.S. 82 APPROX. 21 MILES

10. DISTANCE FROM PROPOSED LOCATION TO NEAREST PROPERTY OR LEASE LINE, FT.

(Also to nearest drlg. unit line, if any)

1295'

18. DISTANCE FROM PROPOSED LOCATION TO NEAREST WELL, DRILLING, COMPLETED, OR APPLIED FOR, ON THIS LEASE, FT.

21. ELEVATIONS (Show whether DF, RT, GR, etc.)

3617' GR

23.

PROPOSED CASING AND CEMENTING

HOLE SIZE	CASING SIZE	WEIGHT/FOOT	GRADE	THREAD TYPE	SETTING DEPTH	QUANTITY OF CEMENT
12 1/4"	8 5/8"	24#	J-55	ST&C	350'	1000' SX
7 7/8"	5 1/2"	17#	J-55	LT&C	4800'	1000' SX

PAY ZONE WILL BE SELECTIVELY PERFORATED AND
STIMULATED AS NEEDED FOR OPTIMUM PRODUCTION.

ATTACHED ARE: 1. LOCATION & ACREAGE DEDICATION PLAT
2. SUPPLEMENTAL DRILLING DATA
3. SURFACE USE PLAN

MASTER SURFACE USE PLAN ON FILE AT BLM ROSWELL.

APPROVAL SUBJECT TO
GENERAL REQUIREMENTS AND
SPECIAL STIPULATIONS
ATTACHED

IN ABOVE SPACE DESCRIBE PROPOSED PROGRAM: If proposal is to deepen or plug back, give data on present productive zone and proposed new productive zone. If proposal is to drill or deepen directionally, give pertinent data on subsurface locations and measured and true vertical depths. Give blowout preventer program, if any.

24.

SIGNED Phonda Nelson TITLE Production Clerk

DATE 7/9/97

(This space for Federal or State office use)

PERMIT NO.

APPROVAL DATE

APPROVED BY

ADM, MINERALS

CONDITIONS OF APPROVAL, IF ANY:

DATE

8-20-97

Form C-102
Revised February 10, 1994
Submit to Appropriate District Office
State Lease - 4 Copies
Fee Lease - 3 Copies

☐ AMENDED REPORT

<div>LOT 1 37.43 AC.</div> <div>LOT 2 37.43 AC.</div> <div>LOT 3 37.41 AC.</div> <div>LOT 4 37.41 AC.</div>		<div>OPERATOR CERTIFICATION</div> <div>I hereby certify the information contained herein is true and complete to the best of my knowledge and belief.</div> <div><div>Rhonda Nelson</div><div>Signature</div></div> <div><div>RHONDA NELSON</div><div>Printed Name</div></div> <div><div>PRODUCTION CLERK</div><div>Title</div></div> <div><div>JULY 8, 1997</div><div>Date</div></div>	
		<div>SURVEYOR CERTIFICATION</div> <div>I hereby certify that the well location shown on this plat was plotted from field notes of actual surveys made by me or under my supervision, and that the same is true and correct to the best of my belief.</div> <div><div>JUNE 30, 1997</div><div>Date Surveyed</div></div> <div><div><div>Signature & Seal of Professional Surveyor</div><div><div>Ronald J. Eidson</div><div>7-02-97</div></div></div><div><div>W.O. Num. 97-11101</div></div></div>	
		<div>Certificate No. 676</div> <div>RONALD J. EIDSON, 3239</div> <div>GARY G. EIDSON, 12641</div>	
		<div>APPROVED FOR FILING</div> <div>7-02-97</div>	

3616.1'

3617.9'

3615.0'

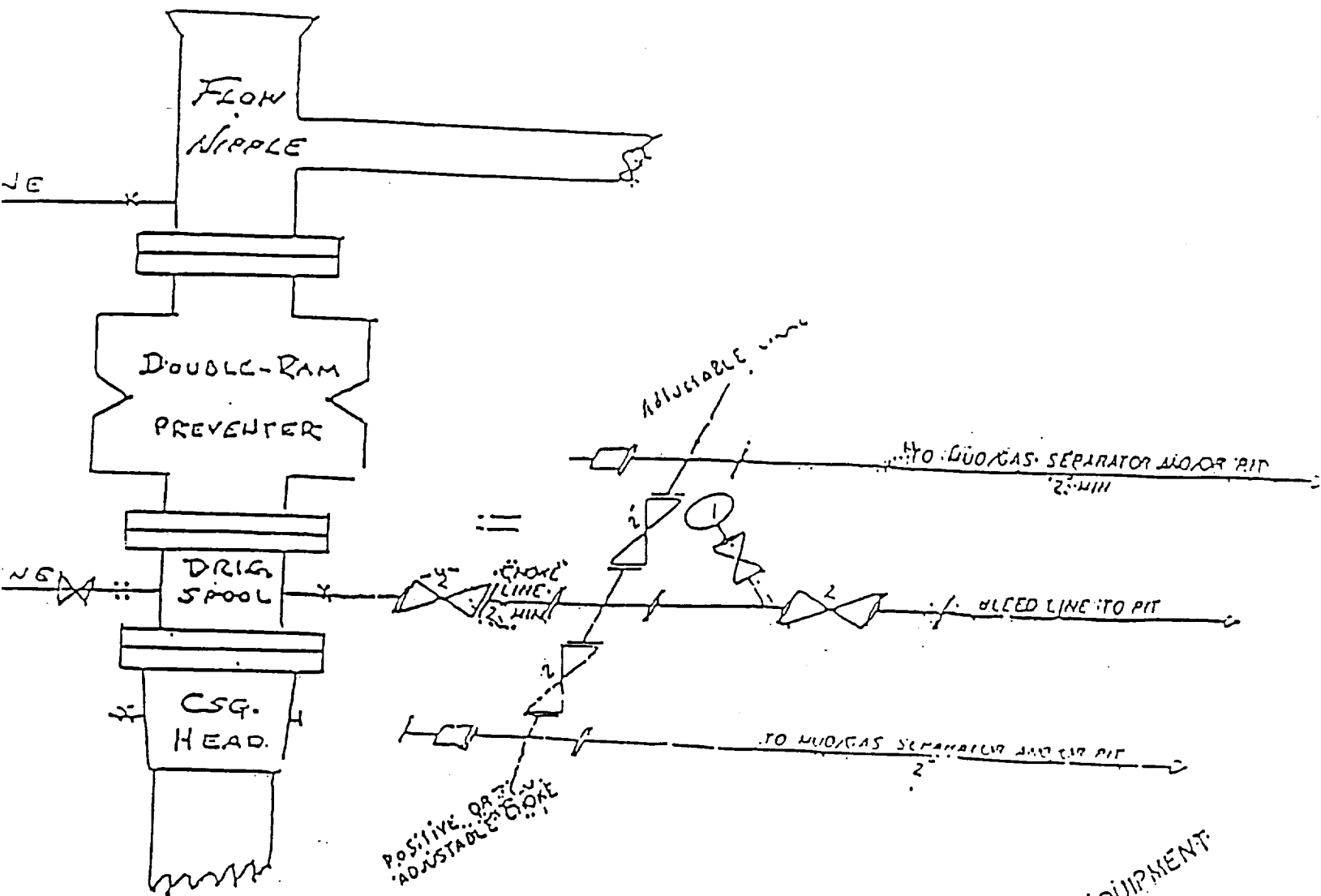
3617.1'

1295'

1345'

2 1/4" & CHOKES MANIFOLD

10"/900 - Cameron SS Space Saver
 3000# Working Pressure
 3.000# Working Pressure Choke Manifold



2 1/4" CHOKES MANIFOLD EQUIPMENT

Marbob Energy Corporation

Burch Keely Unit No. 854
 1295' FSL and 1345' FEL
 Section 19-17S-30E
 Eddy County, New Mexico
 Exhibit #1

Attachment to Exhibit #1
NOTES REGARDING THE BLOWOUT PREVENTERS

1. Drilling nipple to be so constructed that it can be removed without use of a welder through rotary table opening, with minimum I.D. equal to preventer bore.
2. Wear ring to be properly installed in head.
3. Blow out preventer and all fittings must be in good condition, 3000 psi W.P. minimum.
4. All fittings to be flanged.
5. Safety valve must be available on rig floor at all times with proper connections, valve to be full bore 3000 psi W.P. minimum.
6. All choke and fill lines to be securely anchored, especially ends of choke lines.
7. Equipment through which bit must pass shall be at least as large as the diameter of the casing being drilled through.
8. Kelly cock on kelly.
9. Extension wrenches and hand wheels to be properly installed.
10. Blow out preventer control to be located as close to driller's position as feasible.
11. Blow out preventer closing equipment to include minimum 40 gallon accumulator, two independent sources of pump power on each closing unit installation, and meet all API specifications.