

UNITED STATES
DEPARTMENT OF THE INTERIOR
BUREAU OF LAND MANAGEMENT

N. M. Oil & Gas Division
811 S. 1ST ST.
ARTESIA, NM 88210-2034

BLM Roswell District
Modified Form No.
NM60-3160-2

clay

APPLICATION FOR PERMIT TO DRILL, DEEPEN, OR PLUG BACK

1a. TYPE OF WORK

DRILL ☒

DEEPEN ☐

PLUG BACK ☐

b. TYPE OF WELL

OIL WELL ☒

GAS WELL ☐

OTHER ☐

SINGLE ZONE ☐

MULTIPLE ZONE ☐

2. NAME OF OPERATOR

Marbob Energy Corporation

3a. Area Code & Phone No.

505-748-3303

3. ADDRESS OF OPERATOR

P. O. Drawer 217, Artesia, NM 88210

4. LOCATION OF WELL (Report location clearly and in accordance with any State requirements.)

At surface

1345 FNL 1980 FWL

At proposed prod. zone

SAME

SUBJECT TO
LIKE APPROVAL
BY STATE

14. DISTANCE IN MILES AND DIRECTION FROM NEAREST TOWN OR POST OFFICE*

EAST OF ARTESIA ON HWY 82 APPROX. 20.7 MILES

16. DISTANCE FROM PROPOSED* LOCATION TO NEAREST PROPERTY OR LEASE LINE, FT. (Also to nearest drlg. unit line, if any)

1345'

18. NO. OF ACRES IN LEASE

489

17. NO. OF ACRES ASSIGNED TO THIS WELL

40

18. DISTANCE FROM PROPOSED LOCATION* TO NEAREST WELL, DRILLING, COMPLETED, OR APPLIED FOR, ON THIS LEASE, FT.

19. PROPOSED DEPTH

4800'

20. ROTARY OR CABLE TOOLS

ROTARY

21. ELEVATIONS (Show whether DF, RT, GR, etc.)

3607' GR

22. APPROX. DATE WORK WILL START*

FEBRUARY 1, 1997

PROPOSED CASING AND CEMENTING PROGRAM

HOLE SIZE	CASING SIZE	WEIGHT/FOOT	GRADE	THREAD TYPE	SETTING DEPTH	QUANTITY OF CEMENT
12 1/4"	8 5/8"	24#	J-55	LT&C	350'	300 SX
7 7/8"	5 1/2"	17#	J-55	LT&C	4800'	1100 SX

Pay zone will be selectively perforated and stimulated as needed for optimum production.

Attached are: 1. Location & acreage Dedication Plat
2. Supplemental Drilling Data
3. Surface Use Plan



IN ABOVE SPACE DESCRIBE PROPOSED PROGRAM: If proposal is to deepen or plug back, give data on present productive zone and proposed new productive zone. If proposal is to drill or deepen directionally, give pertinent data on subsurface locations and measured and true vertical depths. Give blowout preventer program, if any.

24. SIGNED Chonda Nelson TITLE Production Clerk DATE _____

(This space for Federal or State office use)

PERMIT NO. _____ APPROVAL DATE _____

APPROVED BY ACTING ADM, MINERALS TITLE ACTING DATE 11-6-97

CONDITIONS OF APPROVAL, IF ANY:

*See Instructions On Reverse Side

Title 18 U.S.C. Section 1001, makes it a crime for any person knowingly and willfully to make to any department or agency of the United States any false statement.

DISTRICT I

P.O. Box 1980, Hobbs, NM 88241-1980

State of New Mexico

Energy, Minerals and Natural Resources Department

Form C-102

Revised February 10, 1994

Submit to Appropriate District Office

State Lease - 4 Copies

Fee Lease - 3 Copies

DISTRICT II

P.O. Drawer DD, Artesia, NM 88211-0719

DISTRICT III

1000 Rio Brazos Rd., Aztec, NM 87410

OIL CONSERVATION DIVISION

P.O. Box 2088

Santa Fe, New Mexico 87504-2088

DISTRICT IV

P.O. Box 2088, Santa Fe, NM 87504-2088

☐ AMENDED REPORT

WELL LOCATION AND ACREAGE DEDICATION PLAT

API Number 30-015-29916	Pool Code 28509	Pool Name GRBG JACKSON SR Q GRBG SA
Property Code 6497	Property Name BURCH KEELY UNIT	Well Number 833
OGRID No. 14049	Operator Name MARBOB ENERGY CORPORATION	Elevation 3607

Surface Location

UL or lot No.	Section	Township	Range	Lot Idn	Feet from the	North/South line	Feet from the	East/West line	County
F	25	17 S	29 E		1345	NORTH	1980	WEST	EDDY

Bottom Hole Location If Different From Surface

UL or lot No.	Section	Township	Range	Lot Idn	Feet from the	North/South line	Feet from the	East/West line	County
Dedicated Acres	Joint or Infill	Consolidation Code	Order No.						

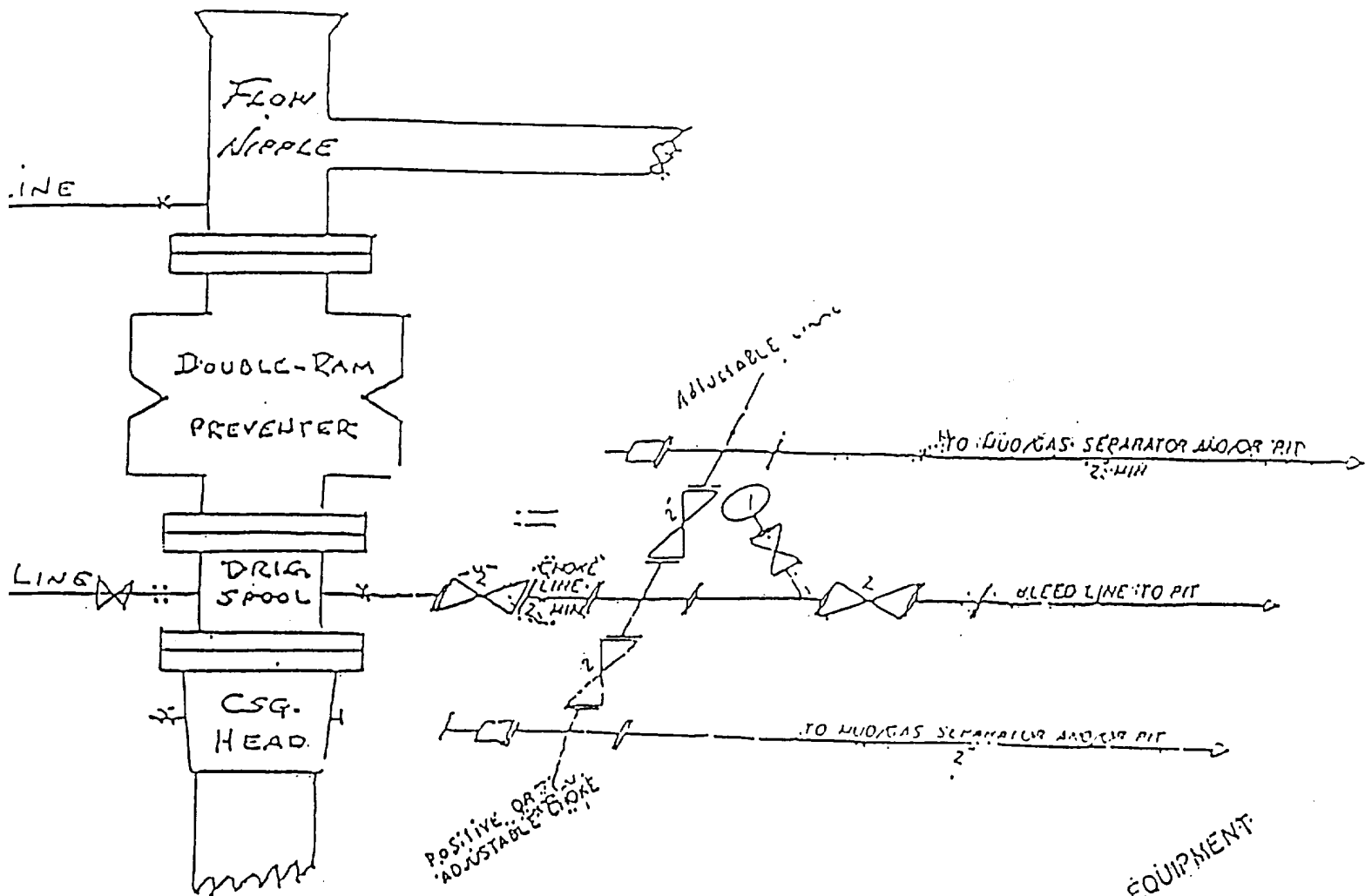
NO ALLOWABLE WILL BE ASSIGNED TO THIS COMPLETION UNTIL ALL INTERESTS HAVE BEEN CONSOLIDATED
OR A NON-STANDARD UNIT HAS BEEN APPROVED BY THE DIVISION

	OPERATOR CERTIFICATION I hereby certify the the information contained herein is true and complete to the best of my knowledge and belief. <i>Rhonda Nelson</i> Signature RHONDA NELSON Printed Name PRODUCTION CLERK Title Date
	SURVEYOR CERTIFICATION I hereby certify that the well location shown on this plat was plotted from field notes of actual surveys made by me or under my supervision, and that the same is true and correct to the best of my belief. OCTOBER 28, 1996 Date Surveyed Signature & Seal of Professional Surveyor RONALD J. EIDSON G.W.O. Num. 96-1141378 Certificate No. JOHN W. WEST, 676 RONALD J. EIDSON, 3239 GARY G. EIDSON, 12641

EXHIBIT #1

B O P & CHOKE MANIFOLD

10"/900 Cameron SS Space Saver
3000# Working Pressure
3,000# Working Pressure Choke Manifold



Marbob Energy Corporation

Burch Keely Unit No. 833
1345' FNL and 1980' FWL
Section 25-17S-29E
Eddy County, New Mexico
Exhibit #1

2 1/2\"/>

Attachment to Exhibit #1
NOTES REGARDING THE BLOWOUT PREVENTERS

1. Drilling nipple to be so constructed that it can be removed without use of a welder through rotary table opening, with minimum I.D. equal to preventer bore.
2. Wear ring to be properly installed in head.
3. Blow out preventer and all fittings must be in good condition, 3000 psi W.P. minimum.
4. All fittings to be flanged.
5. Safety valve must be available on rig floor at all times with proper connections, valve to be full bore 3000 psi W.P. minimum.
6. All choke and fill lines to be securely anchored, especially ends of choke lines.
7. Equipment through which bit must pass shall be at least as large as the diameter of the casing being drilled through.
8. Kelly cock on kelly.
9. Extension wrenches and hand wheels to be properly installed.
10. Blow out preventer control to be located as close to driller's position as feasible.
11. Blow out preventer closing equipment to include minimum 40 gallon accumulator, two independent sources of pump power on each closing unit installation, and meet all API specifications.