

DEPARTMENT OF THE INTERIOR
BUREAU OF LAND MANAGEMENT

Other In-
structions on
Reverse Side

OMB NO. 1004-013/
Expires: December 31, 1991

015

WELL COMPLETION OR RECOMPLETION REPORT AND LOG*

1. TYPE OF WELL: OIL WELL ☒ GAS WELL ☐ DRY ☐ Other ☐
2. TYPE OF COMPLETION: NEW WELL ☒ WORK OVER ☐ DEEP-EN ☐ PLUG BACK ☐ DIFF. REVR. ☐
3. NAME OF OPERATOR: MARBOB ENERGY CORPORATION
4. ADDRESS AND TELEPHONE NO.: P.O. BOX 227, ARTESIA, NM 88210
5. LOCATION OF WELL (Report location clearly and in accordance with any State requirements): At surface 660 FSL 330 FEL
At top prod. interval reported below SAME
At total depth SAME

6. LEASE DESIGNATION AND SERIAL NO.

LC-028793C

6. IF INDIAN, ALLOTTEE OR TRIBE NAME

7. UNIT AGREEMENT NAME

BURCH KEELY UNIT

8. FARM OR LEASE NAME, WELL NO.

285

9. API WELL NO.

30-015-29931

10. FIELD AND POOL, OR WILDCAT

GRBG JACKSON SR Q GRBG SA

11. SEC., T., R., M., OR BLOCK AND SURVEY OR AREA

SEC. 19-T17S-R30E

12. COUNTY OR PARISH
EDDY

13. STATE
NM

15. DATE SPUDDED 2/4/98 16. DATE T.D. REACHED 2/12/98 17. DATE COMPL. (Ready to prod.) 2/19/98 18. ELEVATIONS (DF, RKB, RT, GR, ETC.)* 3617' GR 19. ELEV. CASINGHEAD

20. TOTAL DEPTH, MD & TVD 4900' 21. PLUG, BACK T.D., MD & TVD 4780' 22. IF MULTIPLE COMPL., HOW MANY* 23. INTERVALS DRILLED BY 0-4900' ROTARY TOOLS CABLE TOOLS

24. PRODUCING INTERVAL(S), OF THIS COMPLETION—TOP, BOTTOM, NAME (MD AND TVD)* 4423-4800' GRBG SAN ANDRES 25. WAS DIRECTIONAL SURVEY MADE NO

26. TYPE ELECTRIC AND OTHER LOGS RUN SDSN, LML 27. WAS WELL CORRED NO

CASING RECORD (Report all strings set in well)					
CASING SIZE/GRADE	WEIGHT, LB./FT.	DEPTH SET (MD)	HOLE SIZE	TOP OF CEMENT, CEMENTING RECORD	AMOUNT PULLED
8 5/8"	24#	390'	12 1/4"	450 SX	READY MIX TO SURF
5 1/2"	17#	4893'	7 7/8"	1450 SX	CIRC 286 SX

LINER RECORD					TUBING RECORD		
SIZE	TOP (MD)	BOTTOM (MD)	SACKS CEMENT*	SCREEN (MD)	SIZE	DEPTH SET (MD)	PACKER SET (MD)
					2 7/8"	4362'	

31. PERFORATION RECORD (Interval, Size)		32. ACID, SHOT, FRACTURE, CEMENT SQUEEZE, ETC.	
4423-4800'	20 SHOTS	DEPTH INTERVAL (MD)	AMOUNT AND KIND OF MATERIAL USED
		4423-4800'	ACD W/5000 GALS 15% NEFE ACID

33. PRODUCTION							
DATE FIRST PRODUCTION 2/25/98		PRODUCTION METHOD (Flowing, gas lift, pumping—size and type of pump) PUMPING				WELL STATUS (Producing or shut-in) PROD.	
DATE OF TEST 2/26/98	HOURS TESTED 24	CHOKE SIZE	PROD'N. FOR TEST PERIOD	OIL—BSL. 36	GAS—MCF. 43	WATER—BSL. 977	GAS-OIL RATIO
FLOW, TUBING PRESS.	CASING PRESSURE	CALCULATED 24-HOUR RATE	OIL—BSL.	GAS—MCF.	WATER—BSL.	OIL GRAVITY-API (CORR.)	

34. DISPOSITION OF GAS (Sold, used for fuel, vented, etc.) SOLD TEST WITNESSED BY SHANE GRAY

35. LIST OF ATTACHMENTS LOGS, DEVIATION SURVEY

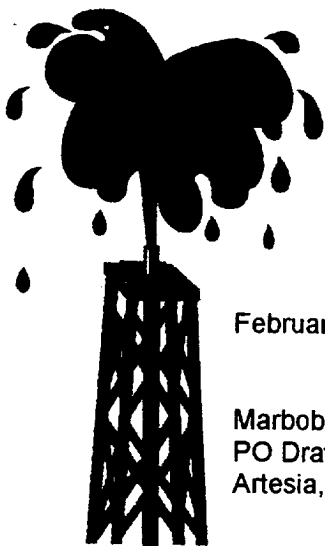
36. I hereby certify that the foregoing and attached information is complete and correct as determined from all available records
SIGNED Rhonda Nelson TITLE PRODUCTION CLERK DATE 3/5/98

*(See Instructions and Spaces for Additional Data on Reverse Side)

Title 18 U.S.C. Section 1001, makes it a crime for any person knowingly and willfully to make to any department or agency of the United States any false, fictitious or fraudulent statements or representations as to any matter within its jurisdiction.

GEOLOGIC MARKERS

[illegible]



Artesia Fishing Tool Co., Inc.

Oil Well Drilling Contractors
PO Box 1370 Artesia, NM 88211-1370
505/746-6651 746-3518 fax 748-2205

February 24, 1998

Marbob Energy Corporation
PO Drawer 227
Artesia, NM 88211-0227

RE: Burch Keely Unit #285
 660' FSL & 330' FEL
 Sec. 19, T17S, R30E
 Eddy County, New Mexico

Gentlemen:

The following is a Deviation Survey for the above captioned well.

DEPTH	DEVIATION
590'	3/4
925'	1 1/2
1446'	1
2002'	1 3/4
2501'	1 3/4
2936'	1 3/4
3434'	1 1/2
3930'	1 1/4
4460'	1 1/4
4900'	1 1/4

Very truly yours,

Eddie C. LaRue
Vice President

STATE OF NEW MEXICO }
COUNTY OF EDDY }

The foregoing was acknowledged before me
this 24th day of February, 1998.

Notary Public



98_880.DOC

Serving Southeast New Mexico and West Texas Since 1974