

UNITED STATES  
DEPARTMENT OF THE INTERIOR

BUREAU OF LAND MANAGEMENT

APPLICATION FOR PERMIT TO DRILL, DEEPEN, OR PLUG BACK

1a. TYPE OF WORK

DRILL ☒

DEEPEN ☐

PLUG BACK ☐

b. TYPE OF WELL

OIL  
WELL ☒

GAS  
WELL ☐

OTHER

SINGLE  
ZONE ☐

MULTIPLE  
ZONE ☐

2. NAME OF OPERATOR

Marbob Energy Corporation

14049

3a. Area Code & Phone No.

505-748-3303

3. ADDRESS OF OPERATOR

P. O. Drawer 217, Artesia, NM 88210

4. LOCATION OF WELL (Report location clearly and in accordance with any State requirements.)\*

At surface  
1650 FNL 1650 FEL

At proposed prod. zone

SAME

14. DISTANCE IN MILES AND DIRECTION FROM NEAREST TOWN OR POST OFFICE\*

EAST OF ARTESIA ON HWY 82 APPROX. 20.7 MILES

15. DISTANCE FROM PROPOSED\*

LOCATION TO NEAREST  
PROPERTY OR LEASE LINE, FT.  
(Also to nearest drig. unit line, if any) 1650'

16. NO. OF ACRES IN LEASE

600

17. NO. OF ACRES ASSIGNED  
TO THIS WELL

40

18. DISTANCE FROM PROPOSED LOCATION\*  
TO NEAREST WELL, DRILLING, COMPLETED,  
OR APPLIED FOR, ON THIS LEASE, FT.

19. PROPOSED DEPTH

6100'

20. ROTARY OR CABLE TOOLS

ROTARY

21. ELEVATIONS (Show whether DF, RT, GR, etc.)

3561' GR

22. APPROX. DATE WORK WILL START\*

MAY 15, 1997

PROPOSED CASING AND CEMENTING PROGRAM

HOLE SIZE	CASING SIZE	WEIGHT/FOOT	GRADE	THREAD TYPE	SETTING DEPTH	QUANTITY OF CEMENT
12 1/4"	8 5/8"	24#	J-55	LTEC	350'	300 SX
7 7/8"	5 1/2"	17#	J-55	LTEC	6100'	1100 SX

PAY ZONE WILL BE SELECTIVELY STIMULATED AND PERFORATED AS  
NEEDED FOR OPTIMUM PRODUCTION.

ATTACHED ARE:

1. LOCATION & ACREAGE DEDICATION PLAT
2. SUPPLEMENTAL DRILLING DATA
3. DUREFACE USE PLAN

posted FD-1  
NLC&API  
12-29-97  
RECEIVED

SUBJECT  
LIKE APPROV.  
BY STATE

FEB 27 97  
BLM  
ROSWELL, NM

IN ABOVE SPACE DESCRIBE PROPOSED PROGRAM: If proposal is to deepen or plug back, give data on present productive zone and proposed new productive zone. If proposal is to drill or deepen directionally, give pertinent data on subsurface locations and measured and true vertical depths. Give blowout preventer program, if any.

24.

SIGNED

Chonde Nelson

TITLE Production Clerk

DATE 2/26/97

(This space for Federal or State office use)

PERMIT NO.

APPROVAL DATE

APPROVED BY

CHOND NELSON

TITLE

MINERALS

CONDITIONS OF APPROVAL, IF ANY:

DATE

12-10-97

DISTRICT I  
P.O. Box 1980, Hobbs, NM 88241-1980

State of New Mexico  
Energy, Minerals and Natural Resources Department

Form C-102  
Revised February 10, 1994  
Submit to Appropriate District Office  
State Lease - 4 Copies  
Fee Lease - 3 Copies

DISTRICT II  
P.O. Drawer DD, Artesia, NM 88211-0719

DISTRICT III  
1000 Rio Brazos Rd., Aztec, NM 87410

OIL CONSERVATION DIVISION

P.O. Box 2088  
Santa Fe, New Mexico 87504-2088

NOV 22 1996

DISTRICT IV  
P.O. BOX 2088, SANTA FE, N.M. 87504-2088

☐ AMENDED REPORT

WELL LOCATION AND ACREAGE DEDICATION PLAT

API Number <b>30-015-29974</b>	Pool Code 96610	Pool Name E. EMPIRE YESO
Property Code 19485	Property Name BARNSDALL FEDERAL	Well Number 12
OGRID No. 14049	Operator Name MARBOB ENERGY CORPORATION	Elevation 3561

Surface Location

UL or lot No.	Section	Township	Range	Lot Idn	Feet from the	North/South line	Feet from the	East/West line	County
G	27	17 S	29 E		1650	NORTH	1650	EAST	EDDY

Bottom Hole Location If Different From Surface

UL or lot No.	Section	Township	Range	Lot Idn	Feet from the	North/South line	Feet from the	East/West line	County
Dedicated Acres <b>40</b>	Joint or Infill	Consolidation Code	Order No.						

NO ALLOWABLE WILL BE ASSIGNED TO THIS COMPLETION UNTIL ALL INTERESTS HAVE BEEN CONSOLIDATED  
OR A NON-STANDARD UNIT HAS BEEN APPROVED BY THE DIVISION

	<b>OPERATOR CERTIFICATION</b>  I hereby certify the the information contained herein is true and complete to the best of my knowledge and belief.   Signature RHONDA NELSON Printed Name PRODUCTION CLERK Title 2/26/97 Date
	<b>SURVEYOR CERTIFICATION</b>  I hereby certify that the well location shown on this plat was plotted from field notes of actual surveys made by me or under my supervision, and that the same is true and correct to the best of my belief.  NOV. 15, 1996 Date Surveyed DMCC Signature Professional Surveyor NEW MEXICO 11-21-96 2239 96-11-1503 Certificate No. JOHN W. VEST 676 RONALD W. VEST 3239 RONALD W. VEST 12641

## DRILLING PROGRAM

Attached to Form 3160-3  
Marbob Energy Corporation  
Barnsdall Federal No. 12  
1650' FNL and 1650' FEL  
Section 27-17S-29E  
Eddy County, New Mexico

1. Geologic Name of Surface Formation:

Permian

2. Estimated Tops of Important Geologic Markers:

Permian	Surface	Glorietta	3900'
Salt	360'		
Base of Salt	780'		
Yates	930'		
Seven Rivers	1145'		
Queen	1815'		
Grayburg	2140'		
San Andres	2510'		

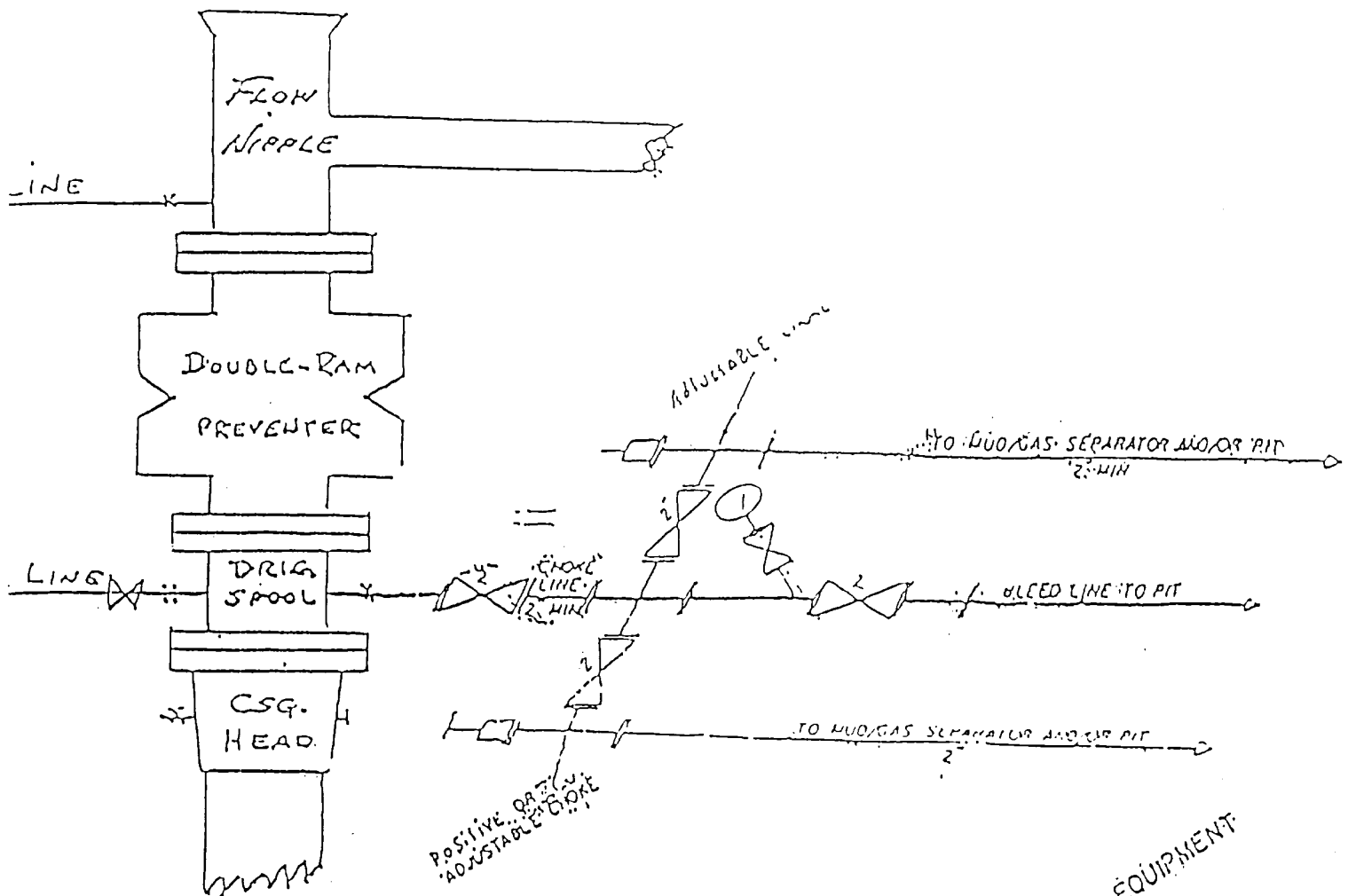
3. Estimated Depths of Anticipated Fresh Water, Oil or Gas:

Upper Permian Sands	100'	Fresh Water
Yates	930'	Oil
Seven Rivers	1145'	Oil
Queen	1815'	Oil
Grayburg	2140'	Oil
San Andres	2510'	Oil
Glorietta	3900'	Oil

EXHIBIT #1

# B O P & CHOKE MANIFOLD

10" / 900 Cameron SS Space Saver  
3000# Working Pressure  
3000# Working Pressure Choke Manifold



MARBOB ENERGY CORPORATION

Barnsdall Federal No. 12  
1650' FNL and 1650' FEL  
Section 27-17S-29E  
Eddy County, New Mexico  
Exhibit #1

2 1/4\"/>

**Attachment to Exhibit #1**  
**NOTES REGARDING THE BLOWOUT PREVENTERS**

1. Drilling nipple to be so constructed that it can be removed without use of a welder through rotary table opening, with minimum I.D. equal to preventer bore.
2. Wear ring to be properly installed in head.
3. Blow out preventer and all fittings must be in good condition, 3000 psi W.P. minimum.
4. All fittings to be flanged.
5. Safety valve must be available on rig floor at all times with proper connections, valve to be full bore 3000 psi W.P. minimum.
6. All choke and fill lines to be securely anchored, especially ends of choke lines.
7. Equipment through which bit must pass shall be at least as large as the diameter of the casing being drilled through.
8. Kelly cock on kelly.
9. Extension wrenches and hand wheels to be properly installed.
10. Blow out preventer control to be located as close to driller's position as feasible.
11. Blow out preventer closing equipment to include minimum 40 gallon accumulator, two independent sources of pump power on each closing unit installation, and meet all API specifications.