

N. M. OIL CONS. DIVISION
811 S. 1ST ST.
ARTE NM 88210-2834
UNITED STATES
DEPARTMENT OF THE INTERIOR
BUREAU OF LAND MANAGEMENT

CONTACT RECEIVING
OFFICE FOR NUMBER
OF COPIES WIRE
(Other instructions on
reverse side)

BLM Roswell District
Modified Form No.
NMD60-3160-2

APPLICATION FOR PERMIT TO DRILL, DEEPEN, OR PLUG BACK

1a. TYPE OF WORK

DRILL ☒

DEEPEN ☐

PLUG BACK ☐

b. TYPE OF WELL

OIL
WELL ☒

GAR
WELL ☐

OTHER

2. NAME OF OPERATOR

Marbob Energy Corporation

14049

3a. Area Code & Phone No.

505-748-3303

3. ADDRESS OF OPERATOR

P. O. BOX 227 Artesia, NM 88210

4. LOCATION OF WELL (Report location clearly and in accordance with requirements.)

1295 FSL 1980 FEL

UNIT 0

At proposed prod. zone

SAME

14. DISTANCE IN MILES AND DIRECTION FROM NEAREST TOWN OR POST OFFICE
EAST OF ARTESIA ON U.S. 82 APPROX. 21 MILES

15. DISTANCE FROM PROPOSED*

LOCATION TO NEAREST

PROPERTY OR LEASE LINE, FT.

(Also to nearest drlg. unit line, if any)

1295'

18. DISTANCE FROM PROPOSED LOCATION*
TO NEAREST WELL, DRILLING, COMPLETED,
OR APPLIED FOR, ON THIS LEASE, FT.

16. NO. OF ACRES IN LEASE

1120

17. NO. OF ACRES ASSIGNED
TO THIS WELL

40

21. ELEVATIONS (Show whether DF, RT, GR, etc.)

3584' GR

20. ROTARY OR CABLE TOOLS

ROTARY

22. APPROX. DATE WORK WILL START*

AUGUST 15, 1997

PROPOSED CASING AND CEMENT

HOLE SIZE	CASING SIZE	WEIGHT/FOOT	GRADE	THREAD TYPE	SETTING DEPTH	QUANTITY OF CEMENT
12 1/4"	8 5/8"	24#	J-55	ST&C	350'	1100 SX
7 7/8"	5 1/2"	17#	J-55	LT&C	4800'	1100 SX

PAY ZONE WILL BE SELECTIVELY PERFORATED AND
STIMULATED AS NEEDED FOR OPTIMUM PRODUCTION.

ATTACHED ARE: 1. LOCATION & ACREAGE DEDICATION PLAT
2. SUPPLEMENTAL DRILLING DATA
3. SURFACE USE PLAN

MASTER SURFACE USE PLAN ON FILE AT BLM ROSWELL.

APPROVAL SUBJECT TO
GENERAL REQUIREMENTS AND
SPECIAL STIPULATIONS
ATTACHED

IN ABOVE SPACE DESCRIBE PROPOSED PROGRAM: If proposal is to deepen or plug back, give data on present productive zone and proposed new productive zone. If proposal is to drill or deepen directionally, give pertinent data on subsurface locations and measured and true vertical depths. Give blowout preventer program, if any.

SIGNED Phonda Nelson TITLE Production Clerk

DATE 7/9/97

(This space for Federal or State office use)

PERMIT NO.

APPROVAL DATE

APPROVED BY (ORIG. SGD.) ARMANDO A. LOPEZ

TITLE Acting

ADM. MINERALS

DATE 2-26-98

CONDITIONS OF APPROVAL, IF ANY:

DISTRICT I
P.O. Box 1980, Hobbs, NM 88241-1980

DISTRICT II
P.O. Drawer DD, Artesia, NM 88211-0719

DISTRICT III
1000 Rio Brazos Rd., Artec, NM 87410

DISTRICT IV
P.O. Box 2068, Santa Fe, NM 87504-2068

State of New Mexico
Energy, Minerals and Natural Resources Department

Form C-102
Revised February 10, 1994
Submit to Appropriate District Office
State Lease - 4 Copies
Fee Lease - 3 Copies

OIL CONSERVATION DIVISION

P.O. Box 2088
Santa Fe, New Mexico 87504-2088

☐ AMENDED REPORT

WELL LOCATION AND ACREAGE DEDICATION PLAT

API Number	Pool Code 28509	Pool Name GRBG JACKSON SR Q GRBG SA
Property Code 6497	Property Name BURCH KEELY UNIT	Well Number 852
OGRID No. 14049	Operator Name MARBOB ENERGY CORPORATION	Elevation 3584

Surface Location

UL or lot No.	Section	Township	Range	Lot Idn	Feet from the	North/South line	Feet from the	East/West line	County
0	23	17 S	29 E		1295	SOUTH	1980	EAST	EDDY

Bottom Hole Location If Different From Surface

UL or lot No.	Section	Township	Range	Lot Idn	Feet from the	North/South line	Feet from the	East/West line	County

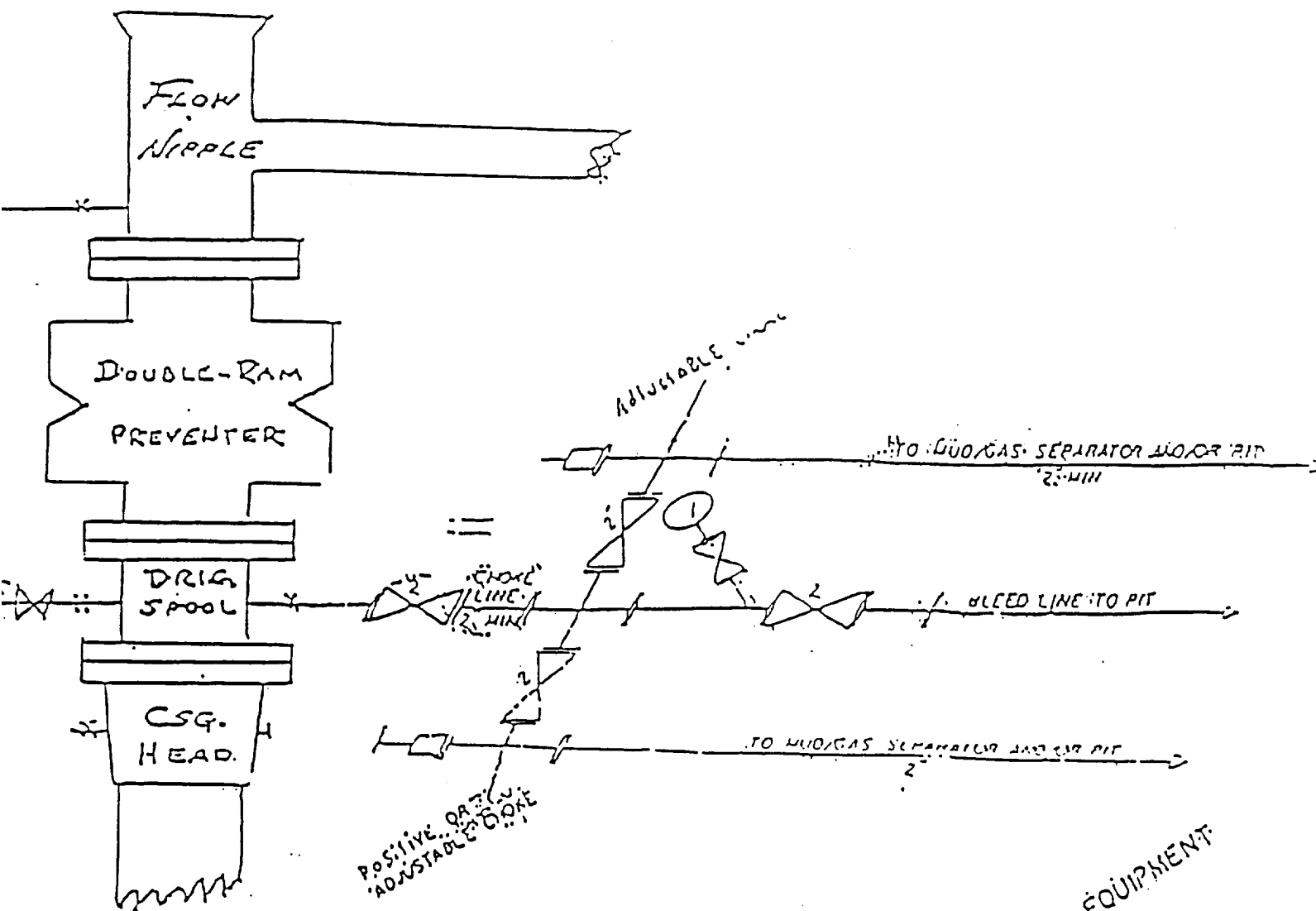
Dedicated Acres 40	Joint or Infill	Consolidation Code	Order No.
-----------------------	-----------------	--------------------	-----------

NO ALLOWABLE WILL BE ASSIGNED TO THIS COMPLETION UNTIL ALL INTERESTS HAVE BEEN CONSOLIDATED
OR A NON-STANDARD UNIT HAS BEEN APPROVED BY THE DIVISION

	OPERATOR CERTIFICATION <i>I hereby certify the the information contained herein is true and complete to the best of my knowledge and belief.</i> Signature RHONDA NELSON Printed Name PRODUCTION CLERK Title JULY 8, 1997 Date
	SURVEYOR CERTIFICATION <i>I hereby certify that the well location shown on this plat was plotted from field notes of actual surveys made by me or under my supervision, and that the same is true and correct to the best of my belief.</i> JUNE 30, 1997 Date Surveyed Signature & Seal of Professional Surveyor W.O. Num. 97-11-1099 Certificate No. JOHN W. WEST, 676 RONALD J. EIDSON, 3239 GARY G. EIDSON, 12641

1" O.D. & CHOKER MANIFOLD

10"/900 Cameron SS Space Saver
 3000# Working Pressure
 3000# Working Pressure Choke Manifold



Marbob Energy Corporation

Burch Keely Unit No. 852
 1295' FSL and 1980' FEL
 Section 23-17S-29E
 Eddy County, New Mexico
 Exhibit #1

2 1/4" CHOKER MANIFOLD EQUIPMENT