

UNITED STATES  
DEPARTMENT OF THE INTERIOR  
BUREAU OF LAND MANAGEMENT

CONTACT RECEIVING  
OFFICE FOR NUMBER  
811 OF COPIES  
ARTESIA (Other than reverse side)

BLM Roswell District  
Modified Form No.  
NM060-3160-2

APPLICATION FOR PERMIT TO DRILL, DEEPEN, OR PLUG BACK

1a. TYPE OF WORK  
DRILL ☒ DEEPEN ☐ PLUG BACK ☐

b. TYPE OF WELL  
OIL WELL ☒ GAS WELL ☐ OTHER ☐

2. NAME OF OPERATOR  
Marbob Energy Corporation 14049

3a. Area Code & Phone No.  
505-748-3303

3. ADDRESS OF OPERATOR  
P. O. BOX 227 Artesia, NM 88210

4. LOCATION OF WELL (Report location clearly and in accordance with any State requirements.)  
At surface 1650 FSL 2310 FEL  
At proposed prod. zone SAME

14. DISTANCE IN MILES AND DIRECTION FROM NEAREST TOWN OR POST OFFICE\*  
EAST OF ARTESIA ON HWY 82 APPROX. 24.7 MILES

15. DISTANCE FROM PROPOSED\* LOCATION TO NEAREST PROPERTY OR LEASE LINE, FT. (Also to nearest drlg. unit line, if any)  
1650'

16. NO. OF ACRES IN LEASE  
80

17. NO. OF ACRES ASSIGNED TO THIS WELL  
40

18. DISTANCE FROM PROPOSED LOCATION\* TO NEAREST WELL, DRILLING, COMPLETED, OR APPLIED FOR, ON THIS LEASE, FT.

19. PROPOSED DEPTH  
5000'

20. ROTARY OR CABLE TOOLS  
ROTARY

21. ELEVATIONS (Show whether DF, RT, GR, etc.)  
3760' GR

22. APPROX. DATE WORK WILL START\*  
3/1/98

PROPOSED CASING AND CEMENTING PROGRAM

HOLE SIZE	CASING SIZE	WEIGHT/FOOT	GRADE	THREAD TYPE	SETTING DEPTH	QUANTITY OF CEMENT
12 1/4"	8 5/8"	24#	J-55	LT&C	350'	300 SX
7 7/8"	5 1/2"	24#	J-55	LT&C	5000'	1100 SX

PAY ZONE WILL BE SELECTIVELY STIMULATED AND PERFORATED AS  
NEEDED FOR OPTIMUM PRODUCTION.

ATTACHED ARE: 1. LOCATION & ACREAGE DEDICATION PLAT  
2. SUPPLEMENTAL DRILLING DATA  
3. SURFACE USE PLAN

Post 7 D-1  
3-20-98

API + Loc

IN ABOVE SPACE DESCRIBE PROPOSED PROGRAM: If proposal is to deepen or plug back, give data on present productive zone and proposed new productive zone. If proposal is to drill or deepen directionally, give pertinent data on subsurface locations and measured and true vertical depths. Give blowout preventer program, if any.

SIGNER Rhonda Nelson TITLE Production Clerk DATE 2/4/98

PERMIT NO. \_\_\_\_\_ APPROVAL DATE \_\_\_\_\_  
(ORIG. SGD.) ARMANDO A. LOPEZ ADM. MINERALS  
APPROVED BY \_\_\_\_\_ TITLE Acting DATE Mar. 04 1998  
CONDITIONS OF APPROVAL, IF ANY: \_\_\_\_\_

\*See Instructions On Reverse Side

DISTRICT I  
P.O. Box 1980, Hobbs, NM 88241-1980

State of New Mexico  
Energy, Minerals and Natural Resources Department

Form C-102  
Revised February 10, 1994  
Submit to Appropriate District Office  
State Lease - 4 Copies  
Fee Lease - 3 Copies

DISTRICT II  
P.O. Drawer DD, Artesia, NM 88211-0719

DISTRICT III  
1000 Rio Brazos Rd., Aztec, NM 87410

DISTRICT IV  
P.O. BOX 2088, SANTA FE, N.M. 87504-2088

OIL CONSERVATION DIVISION  
P.O. Box 2088  
Santa Fe, New Mexico 87504-2088

☐ AMENDED REPORT

WELL LOCATION AND ACREAGE DEDICATION PLAT

API Number	Pool Code	Pool Name
Property Code	Property Name RED FEDERAL	Well Number 2
OGRID No.	Operator Name MARBOB ENERGY CORPORATION	Elevation 3670'

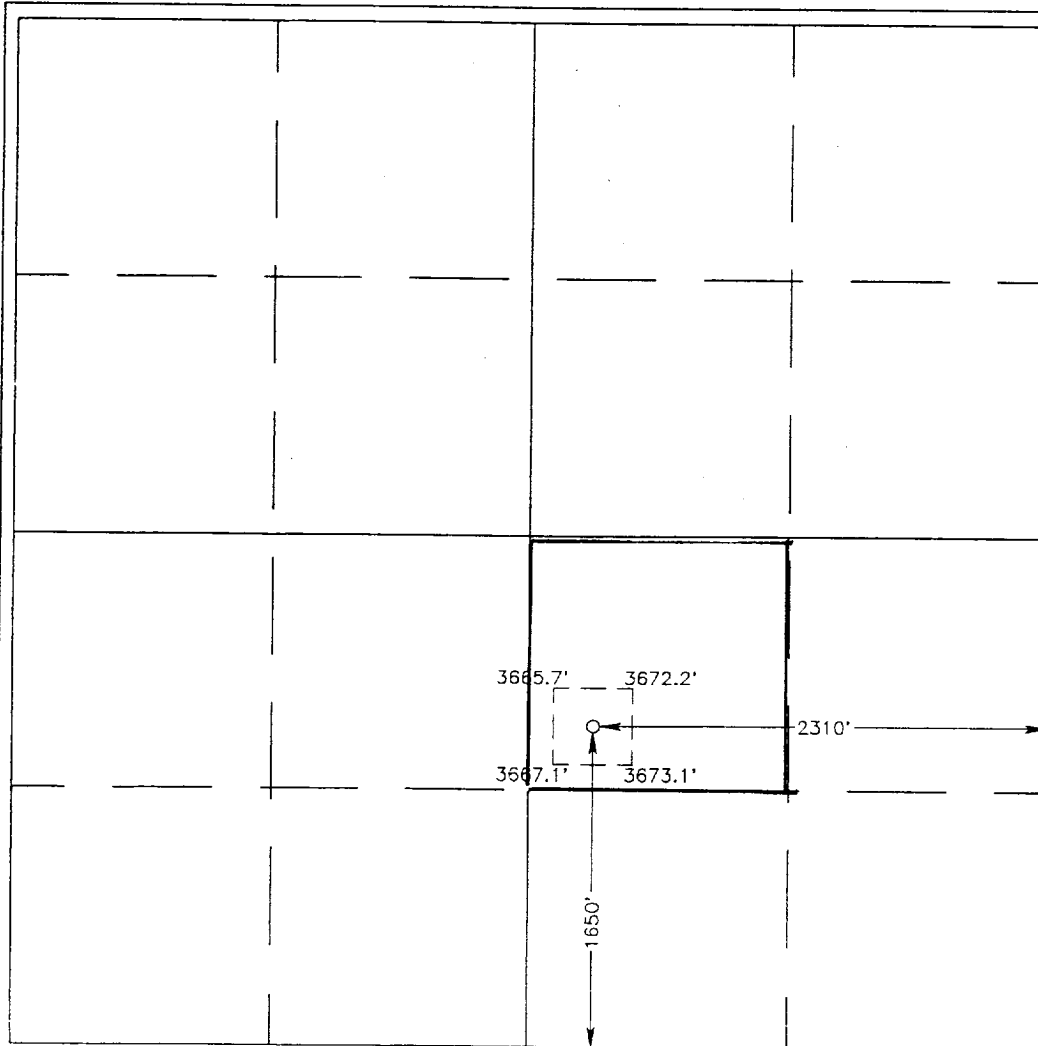
Surface Location

UL or lot No.	Section	Township	Range	Lot Idn	Feet from the	North/South line	Feet from the	East/West line	County
J	17	17 S	30 E		1650	SOUTH	2310	EAST	EDDY

Bottom Hole Location If Different From Surface

UL or lot No.	Section	Township	Range	Lot Idn	Feet from the	North/South line	Feet from the	East/West line	County
Dedicated Acres	Joint or Infill	Consolidation Code	Order No.						

NO ALLOWABLE WILL BE ASSIGNED TO THIS COMPLETION UNTIL ALL INTERESTS HAVE BEEN CONSOLIDATED  
OR A NON-STANDARD UNIT HAS BEEN APPROVED BY THE DIVISION



OPERATOR CERTIFICATION

I hereby certify the the information  
contatned herein is true and complete to the  
best of my knowledge and belief.

Signature

Printed Name

Title

Date

SURVEYOR CERTIFICATION

I hereby certify that the well location shown  
on this plat was plotted from field notes of  
actual surveys made by me or under my  
supervision and that the same is true and  
correct to the best of my belief.

JANUARY 30 1998

Date Surveyed

Signature & Seal of  
Professional Surveyor

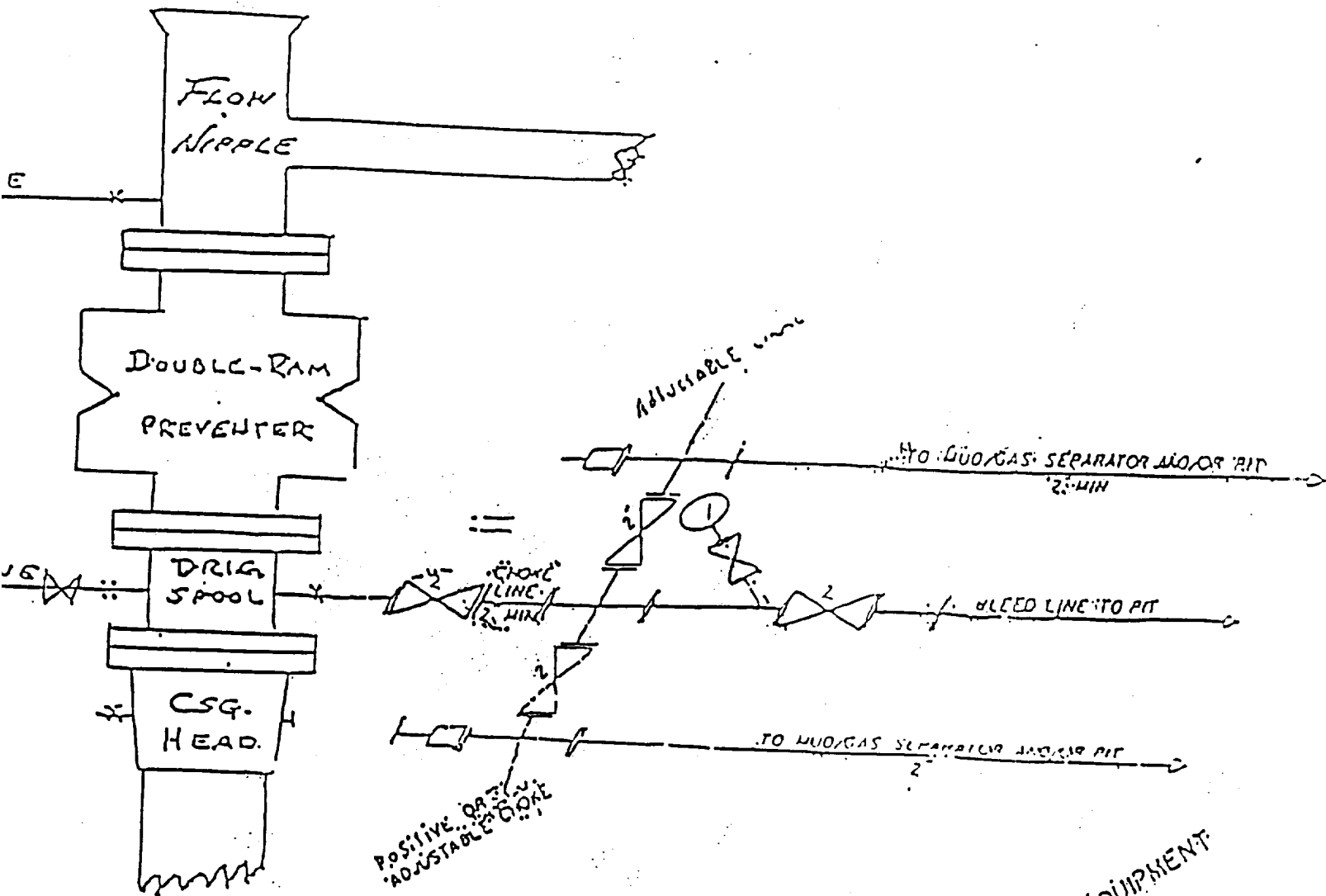
Ronald J. Eidson  
98-11-0123

Certificate No. RONALD J. EIDSON 3239  
GARY EIDSON 12641

EXHIBIT #1

# B O P & CHOKE MANIFOLD

10"/900 Cameron SS Space Saver  
3000# Working Pressure  
3,000# Working Pressure Choke Manifold



214 CHOKE MANIFOLD EQUIPMENT

MARBOB ENERGY CORPORATION  
Red Federal No. 2  
1650' FSL and 2310' FEL  
Section 17, R-17S, R-30E  
Eddy County, New Mexico

Exhibit #1

Attachment to Exhibit #1  
NOTES REGARDING THE BLOWOUT PREVENTERS

1. Drilling nipple to be so constructed that it can be removed without use of a welder through rotary table opening, with minimum I.D. equal to preventer bore.
2. Wear ring to be properly installed in head.
3. Blow out preventer and all fittings must be in good condition, 1000 psi W.P. minimum.
4. All fittings to be flanged.
5. Safety valve must be available on rig floor at all times with proper connections, valve to be full bore 1000 psi W.P. minimum.
6. All choke and fill lines to be securely anchored, especially ends of choke lines.
7. Equipment through which bit must pass shall be at least as large as the diameter of the casing being drilled through.
8. Kelly cock on kelly.
9. Extension wrenches and hand wheels to be properly installed.
10. Blow out preventer control to be located as close to driller's position as feasible.
11. Blow out preventer closing equipment to include minimum 40 gallon accumulator, two independent sources of pump power on each closing unit installation, and meet all API specifications.