

N. M.

CONTACT RECEIVING
OFFICE FOR NUMBER
OF COPIES WIRE
(Other instructions on
reverse side)

30-015-30209
BLM Roswell District
Modified Form No.
NMD60-3160-2

UNITED STATES
DEPARTMENT OF THE INTERIOR
BUREAU OF LAND MANAGEMENT

APPLICATION FOR PERMIT TO DRILL, DEEPEN, OR PLUG BACK

1. TYPE OF WORK

DRILL ☒

DEEPEN ☐

PLUG BACK ☐

2. TYPE OF WELL

OIL
WELL ☒

GAS
WELL ☐

OTHER ☐

SINGLE
ZONE ☐

MULTIPLE
ZONE ☐

3. NAME OF OPERATOR

Marbob Energy Corporation

14049

3a. Area Code & Phone No.

505-748-3303

4. ADDRESS OF OPERATOR

P. O. BOX 227 Artesia, NM 88210

5. LOCATION OF WELL (Report location clearly and in accordance with any State requirements.)

At surface
2310 FSL 2310 FWL

At proposed prod. zone

SAME

WTK

6. DISTANCE IN MILES AND DIRECTION FROM NEAREST TOWN OR POST OFFICE*

EAST OF ARTESIA ON HWY 82 APPROX 20.2 MILES

7. DISTANCE FROM PROPOSED*

LOCATION TO NEAREST
PROPERTY OR LEASE LINE, FT.
(Also to nearest drlg. unit line, if any)

2310'

8. DISTANCE FROM PROPOSED LOCATION*

TO NEAREST WELL, DRILLING, COMPLETED,
OR APPLIED FOR, ON THIS LEASE, FT.

9. NO. OF ACRES IN LEASE

600

10. PROPOSED DEPTH

5000'

11. NO. OF ACRES ASSIGNED
TO THIS WELL

40

12. ROTARY OR CABLE TOOLS

ROTARY

13. ELEVATIONS (Show whether DF, RT, GR, etc.)

3530' GR

14. APPROX. DATE WORK WILL START*

4/1/98

PROPOSED CASING AND CEMENTING PROGRAM

HOLE SIZE	CASING SIZE	WEIGHT/FOOT	GRADE	THREAD TYPE	SETTING DEPTH	QUANTITY OF CEMENT
12 1/4"	8 5/8"	24#	J-55	WT&W	350'	300 SX
7 7/8"	5 1/2"	17#	J-55	LT&C	5000'	1100 SX

ROSWELL CONTROLLED WATER BASIN

PAY ZONE WILL BE SELECTIVELY STIMULATED AND PERFORATED AS
NEEDED FOR OPTIMUM PRODUCTION.

ATTACHED ARE: 1. LOCATION & ACREAGE DEDICATION PLAT
2. SUPPLEMENTAL DRILLING DATA
3. SURFACE USE PLAN

Posted IDI
NA & API
4-10-98

APPROVAL SUBJECT TO
GENERAL REQUIREMENTS AND
SPECIAL STIPULATIONS
ATTACHED

IN ABOVE SPACE DESCRIBE PROPOSED PROGRAM: If proposal is to deepen or plug back, give data on present productive zone and proposed new productive zone. If proposal is to drill or deepen directionally, give pertinent data on subsurface locations and measured and true vertical depths. Give blowout preventer program, if any.

SIGNED

Thonda Nelson

TITLE Production Clerk

DATE 2/3/98

(This space for Federal or State office use)

PERMIT NO.

APPROVAL DATE

(ORIG. SGD.) ARMANDO A. LOPEZ

APPROVED BY

TITLE

ADM. MINERALS

DATE

4-7-98

CONDITIONS OF APPROVAL, IF ANY:

DISTRICT I
P.O. Box 1980, Hobbs, NM 88241-1980

State of New Mexico

JAN 21 1998

Energy, Minerals and Natural Resources Department

Form C-102

Revised February 10, 1994
Submit to Appropriate District Office

State Lease - 4 Copies
Fee Lease - 3 Copies

DISTRICT II
P.O. Drawer 80, Artesia, NM 88211-0719

DISTRICT III
1000 Rio Brazos Rd., Artesia, NM 87410

OIL CONSERVATION DIVISION

P.O. Box 2088

Santa Fe, New Mexico 87504-2088

DISTRICT IV
P.O. Box 2088, Santa Fe, NM 87504-2088

☐ AMENDED REPORT

WELL LOCATION AND ACREAGE DEDICATION PLAT

API Number	Pool Code 96610	Pool Name E. EMPIRE YESO
Property Code 19485	Property Name BARNSDALL FEDERAL	Well Number 13
OGRID No. 14049	Operator Name MARBOB ENERGY CORPORATION	Elevation 3530

Surface Location

UL or lot No. K	Section 27	Township 17 S	Range 29 E	Lot Idn	Feet from the 2310	North/South line SOUTH	Feet from the 2310	East/West line WEST	County EDDY
--------------------	---------------	------------------	---------------	---------	-----------------------	---------------------------	-----------------------	------------------------	----------------

Bottom Hole Location If Different From Surface

UL or lot No.	Section	Township	Range	Lot Idn	Feet from the	North/South line	Feet from the	East/West line	County
Dedicated Acres	Joint or Infill	Consolidation Code	Order No.						

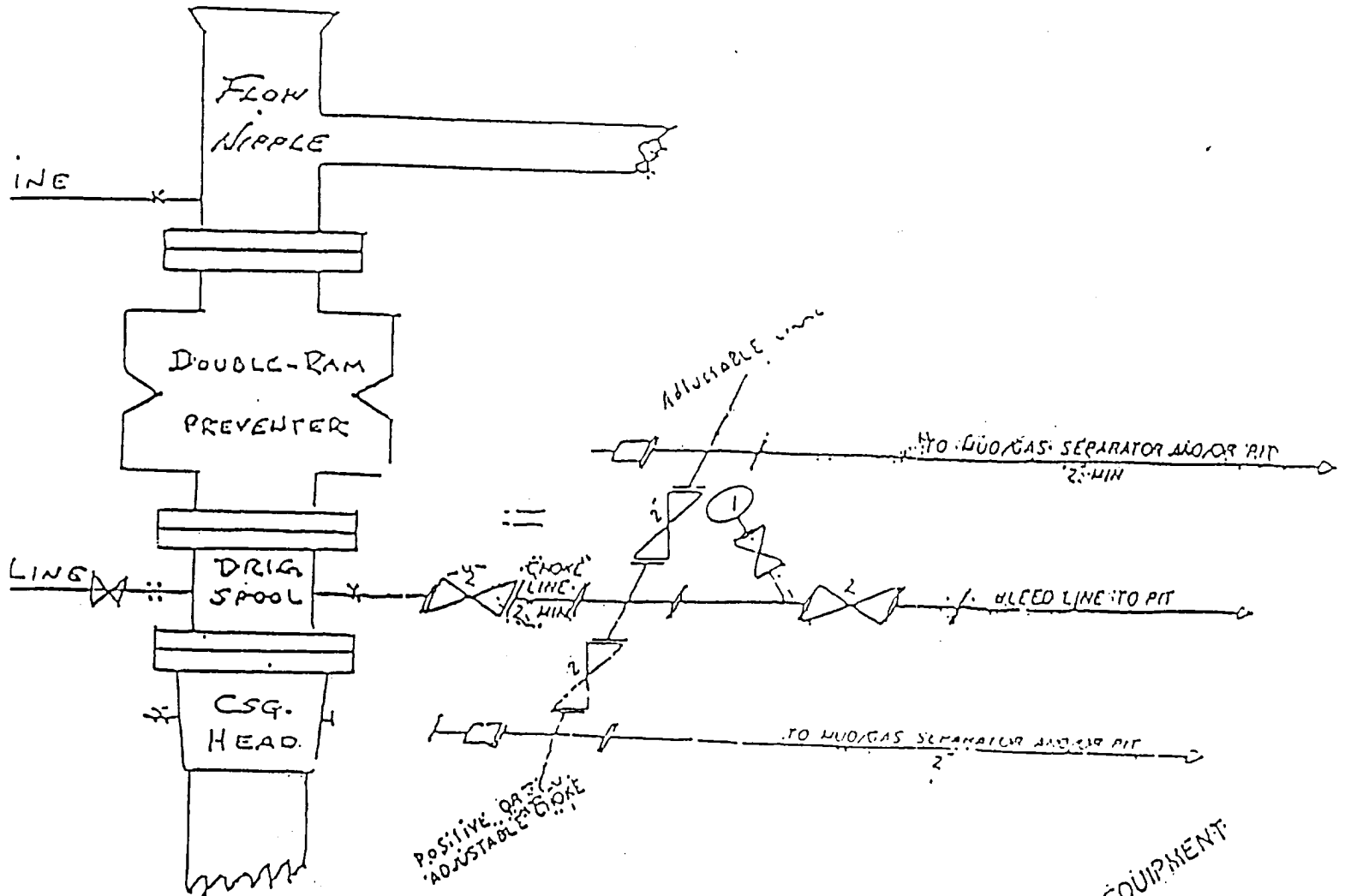
NO ALLOWABLE WILL BE ASSIGNED TO THIS COMPLETION UNTIL ALL INTERESTS HAVE BEEN CONSOLIDATED
OR A NON-STANDARD UNIT HAS BEEN APPROVED BY THE DIVISION

	OPERATOR CERTIFICATION <i>I hereby certify that the information contained herein is true and complete to the best of my knowledge and belief.</i> Signature RHONDA NELSON Printed Name PRODUCTION CLERK Title 2/3/98 Date
	SURVEYOR CERTIFICATION <i>I hereby certify that the well location shown on this plat was plotted from field notes of actual surveys made by me or under my supervision, and that the same is true and correct to the best of my belief.</i> JANUARY 19, 1998 Date Surveyed Signature of Gary A. Edson Professional Surveyor NEW MEXICO 3239 W.O. Num. 98-11-2044 Certificate No. RONALD C. EDSON, 3239 GARY A. EDSON, 12841 EDSON, McDONALD, 12185

EXHIBIT #1

B O P & CHOKE MANIFOLD

10"/900 Cameron SS Space Saver
3000# Working Pressure
3.000# Working Pressure Choke Manifold



2 1/2" CHOKE MANIFOLD EQUIPMENT

MARBOB ENERGY CORPORATION

Barnsdall Federal No. 13
2310' FSL and 2310' FWL
Section 27, T-17S, R-29E
Eddy County, New Mexico
Exhibit #1

Attachment to Exhibit #1
NOTES REGARDING THE BLOWOUT PREVENTERS

1. Drilling nipple to be so constructed that it can be removed without use of a welder through rotary table opening, with minimum I.D. equal to preventer bore.
2. Wear ring to be properly installed in head.
3. Blow out preventer and all fittings must be in good condition, 1000 psi W.P. minimum.
4. All fittings to be flanged.
5. Safety valve must be available on rig floor at all times with proper connections, valve to be full bore 1000 psi W.P. minimum.
6. All choke and fill lines to be securely anchored, especially ends of choke lines.
7. Equipment through which bit must pass shall be at least as large as the diameter of the casing being drilled through.
8. Kelly cock on kelly.
9. Extension wrenches and hand wheels to be properly installed.
10. Blow out preventer control to be located as close to driller's position as feasible.
11. Blow out preventer closing equipment to include minimum 40 gallon accumulator, two independent sources of pump power on each closing unit installation, and meet all API specifications.