

UNITED STATES
DEPARTMENT OF THE INTERIOR
BUREAU OF LAND MANAGEMENT

APPLICATION FOR PERMIT TO DRILL, DEEPEN, OR PLUG BACK

1a. TYPE OF WORK

DRILL ☒

DEEPEN ☐

PLUG BACK ☐

b. TYPE OF WELL

OIL
WELL ☒

GAS
WELL ☐

OTHER ☐

SINGLE
ZONE ☐

MULTIPLE
ZONE ☐

2. NAME OF OPERATOR

Marbob Energy Corporation

14049

3a. Area Code & Phone No.

505-748-3303

3. ADDRESS OF OPERATOR

P. O. BOX 227 Artesia, NM 88210

4. LOCATION OF WELL (Report location clearly and in accordance with any State requirements.)

At surface

2310 FNL 990 FEL

At proposed prod. zone

SAME

Wt. #

RECEIVED
OCC - ARTESIA

14. DISTANCE IN MILES AND DIRECTION FROM NEAREST TOWN OR POST OFFICE*

EAST OF ARTESIA ON HWY 82 APPROX 27.1 MILES

15. DISTANCE FROM PROPOSED*

LOCATION TO NEAREST
PROPERTY OR LEASE LINE, FT.
(Also to nearest drlg. unit line, if any)

990'

16. NO. OF ACRES IN LEASE

80

17. NO. OF ACRES ASSIGNED
TO THIS WELL

40

18. DISTANCE FROM PROPOSED LOCATION*
TO NEAREST WELL, DRILLING, COMPLETED,
OR APPLIED FOR, ON THIS LEASE, FT.

19. PROPOSED DEPTH

6000'

20. ROTARY OR CABLE TOOLS

ROTARY

21. ELEVATIONS (Show whether DF, RT, GR, etc.)

3662' GR

22. APPROX. DATE WORK WILL START*

5/15/98

PROPOSED CASING AND CEMENTING PROGRAM

HOLE SIZE	CASING SIZE	WEIGHT/FOOT	GRADE	THREAD TYPE	SETTING DEPTH	QUANTITY OF CEMENT
12 1/4"	8 5/8"	24#	J-55	LT&C	350'	300 SY
7 7/8"	5 1/2"	17#	J-55	LT&C	6000'	1100 SY

PAY ZONE WILL BE SELECTIVELY PERFORATED AND STIMULATED AS
NEEDED FOR OPTIMUM PRODUCTION.

ATTACHED ARE: 1. LOCATION & ACREAGE DEDICATION PLAT
2. SURFACE USE PLAN
3. SUPPLEMENTAL DRILLING DATA

Post FD-1
5-22-98

API & LOC

IN ABOVE SPACE DESCRIBE PROPOSED PROGRAM: If proposal is to deepen or plug back, give data on present productive zone and proposed new productive zone. If proposal is to drill or deepen directionally, give pertinent data on subsurface locations and measured and true vertical depths. Give blowout preventer program, if any.

24.

SIGNED Robin Cockerum

TITLE Production Clerk

DATE 4/15/98

(This space for Federal or State office use)

PERMIT NO.

APPROVAL DATE

APPROVED BY

TITLE John J. MINERALS

DATE 5-15-98

CONDITIONS OF APPROVAL, IF ANY:

P.O. Box 1980, Hobbs, NM 88241-1980

Energy, Minerals and Natural Resources Department

Revised February 10, 1994

Submit to Appropriate District Office

State Lease - 4 Copies

Fee Lease - 3 Copies

P.O. Drawer DD, Artesia, NM 88211-0719

1000 Rio Brazos Rd., Aztec, NM 87410

P.O. BOX 2088, SANTA FE, N.M. 87504-2088

P.O. Box 2088

Santa Fe, New Mexico 87504-2088

☐ AMENDED REPORT

WELL LOCATION AND ACREAGE DEDICATION PLAT

API Number	Pool Code	Pool Name
	22057	LOCO HILLS PADDOCK
Property Code	Property Name	Well Number
	RANDY FEDERAL	3
OGRID No.	Operator Name	Elevation
14049	MARBOB ENERGY CORPORATION	3662

Surface Location

UL or lot No.	Section	Township	Range	Lot Idn	Feet from the	North/South line	Feet from the	East/West line	County
H	22	17 S	30 E		2310	NORTH	990	EAST	EDDY

Bottom Hole Location If Different From Surface

UL or lot No.	Section	Township	Range	Lot Idn	Feet from the	North/South line	Feet from the	East/West line	County
Dedicated Acres 40	Joint or Infill	Consolidation Code		Order No.					

NO ALLOWABLE WILL BE ASSIGNED TO THIS COMPLETION UNTIL ALL INTERESTS HAVE BEEN CONSOLIDATED
OR A NON-STANDARD UNIT HAS BEEN APPROVED BY THE DIVISION

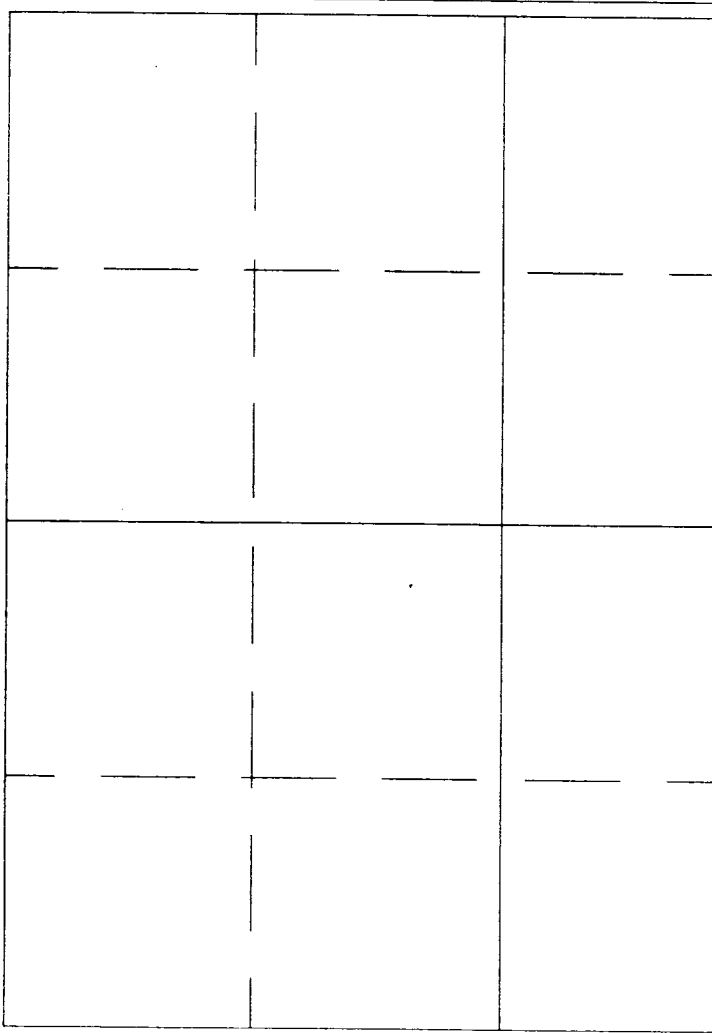
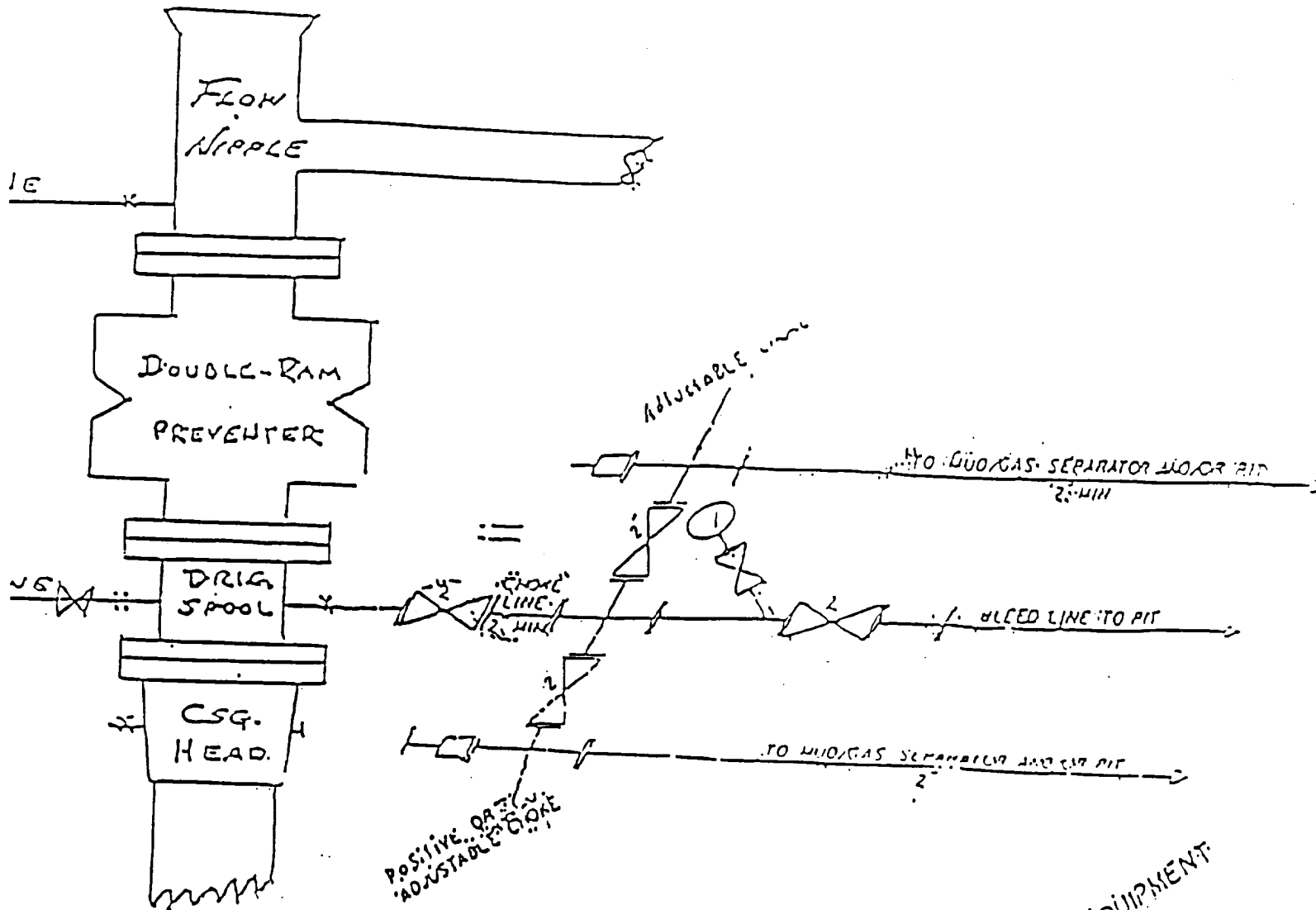
	<p style="text-align: center;">OPERATOR CERTIFICATION</p> <p><i>I hereby certify the the information contained herein is true and complete to the best of my knowledge and belief.</i></p> <p style="text-align: center;"><u>Robin Cockrum</u> Signature</p> <p style="text-align: center;"><u>ROBIN COCKRUM</u> Printed Name</p> <p style="text-align: center;"><u>PRODUCTION CLERK</u> Title</p> <p style="text-align: center;"><u>4/15/98</u> Date</p>								
	<p style="text-align: center;">SURVEYOR CERTIFICATION</p> <p><i>I hereby certify that the well location shown on this plat was plotted from field notes of actual surveys made by me or under my supervision, and that the same is true and correct to the best of my belief.</i></p> <p style="text-align: center;">APRIL 9, 1998</p> <p>Date Surveyed DMCC</p> <p>Signature & Seal of Professional Surveyor</p> <p style="text-align: center;"><u>Ronald J. Eidson</u> 4-13-98 98-11-0538</p> <table border="0" style="width: 100%;"><tr><td>Certificate No.</td><td>RONALD J. EIDSON</td><td>3239</td></tr><tr><td></td><td>GARY EIDSON</td><td>12641</td></tr><tr><td></td><td>MACON McDONALD</td><td>12185</td></tr></table>	Certificate No.	RONALD J. EIDSON	3239		GARY EIDSON	12641		MACON McDONALD
Certificate No.	RONALD J. EIDSON	3239							
	GARY EIDSON	12641							
	MACON McDONALD	12185							

EXHIBIT #1

B U P & CHOKE MANIFOLD

10"/900 Cameron SS Space Saver
3000# Working Pressure
3.000# Working Pressure Choke Manifold



2 1/2" CHOKE MANIFOLD EQUIPMENT

marbob

energy corporation

Randy Federal # 3

2310' FNL & 990' FEL

Section 22; T17s -- R30e

Eddy County, New Mexico

Exhibit # 1

Attachment to Exhibit #1
NOTES REGARDING THE BLOWOUT PREVENTERS

1. Drilling nipple to be so constructed that it can be removed without use of a welder through rotary table opening, with minimum I.D. equal to preventer bore.
2. Wear ring to be properly installed in head.
3. Blow out preventer and all fittings must be in good condition, 3000 psi W.P. minimum.
4. All fittings to be flanged.
5. Safety valve must be available on rig floor at all times with proper connections, valve to be full bore 3000 psi W.P. minimum.
6. All choke and fill lines to be securely anchored, especially ends of choke lines.
7. Equipment through which bit must pass shall be at least as large as the diameter of the casing being drilled through.
8. Kelly cock on kelly.
9. Extension wrenches and hand wheels to be properly installed.
10. Blow out preventer control to be located as close to driller's position as feasible.
11. Blow out preventer closing equipment to include minimum 40 gallon accumulator, two independent sources of pump power on each closing unit installation, and meet all API specifications.