

L & M DRILLING, INC.

OIL WELL DRILLING CONTRACTORS
PO BOX 1370 ARTESIA, NEW MEXICO 88211-1370
(505) 746-4405 746-3518 748-2205

October 26, 1999

Marbob Energy Corporation
PO Drawer 227
Artesia, NM 88211-0227

RE: E L Federal #2
330' FNL & 330' FEL
Sec. 21, T17S, R30E
Eddy County, New Mexico

Gentlemen:

The following is a Deviation Survey for the above captioned well.

DEPTH	DEVIATION	DEPTH	DEVIATION
438'	1°	2809'	1 3/4°
672'	1/2°	3054'	1°
946'	3/4°	3330'	1/2°
1191'	3/4°	3642'	3/4°
1435'	1/4°	3892'	1/2°
1786'	1°	4140'	1°
2026'	1/2°	4389'	1 1/4°
2270'	1 1/4°	4638'	1°
2523'	1 1/2°	4960'	1°

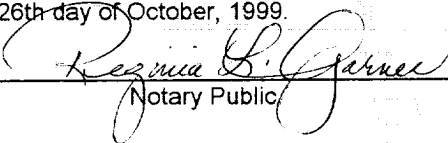
Very truly yours,

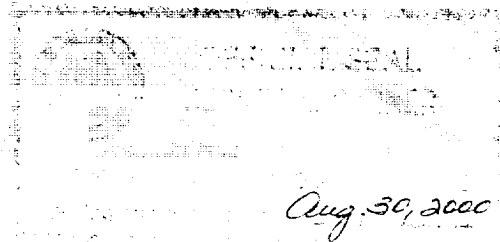


Eddie C. LaRue
Vice President

STATE OF NEW MEXICO }
COUNTY OF EDDY }

The foregoing was acknowledged before me
this 26th day of October, 1999.



Notary Public

1988
1989
1990

1991
1992
1993

RECEIVED

NOV 17 1988

AMERICAN
UNIVERSITY