

UNITED STATES  
DEPARTMENT OF THE INTERIOR  
BUREAU OF LAND MANAGEMENT

CONTACT RECEIVING  
OFFICE FOR NUMBER  
OF COPIES REQUIRED  
(Other instructions on  
reverse side)

BLM Roswell District  
Modified Form No.  
NMO60-3160-2

ckf

APPLICATION FOR PERMIT TO DRILL, DEEPEN, OR PLUG BACK

1a. TYPE OF WORK <b>DRILL</b> <input checked="" type="checkbox"/> <b>DEEPEN</b> <input type="checkbox"/> <b>PLUG BACK</b> <input type="checkbox"/>		5. LEASE DESIGNATION AND SERIAL NO. LC-029395B	
b. TYPE OF WELL OIL WELL <input checked="" type="checkbox"/> GAS WELL <input type="checkbox"/> OTHER <input type="checkbox"/>		6. IF INDIAN, ALLOTTEE OR TRIBE NAME	
2. NAME OF OPERATOR Marbob Energy Corporation		7. UNIT AGREEMENT NAME 30-115-30268	
3. ADDRESS OF OPERATOR P. O. BOX 227 Artesia, NM 88210		8. FARM OR LEASE NAME LEE FEDERAL 23300	
4. LOCATION OF WELL (Report location clearly and in accordance with any State requirements.) At surface 1650 FNL 990 FWL At proposed prod. zone SAME		9. WELL NO. 2	
14. DISTANCE IN MILES AND DIRECTION FROM NEAREST TOWN OR POST OFFICE* EAST OF ARTESIA ON HWY 82 APPROX 29.7 MILES		10. FIELD AND POOL, OR WILDCAT WILDCAT; YESO	
15. DISTANCE FROM PROPOSED* LOCATION TO NEAREST PROPERTY OR LEASE LINE, FT. (Also to nearest drlg. unit line, if any) 990'		11. SEC., T., R. M., OR BLK. AND SURVEY OR AREA SEC. 20-T17S-R31E	
16. NO. OF ACRES IN LEASE 1800		12. COUNTY OR PARISH EDDY	
17. NO. OF ACRES ASSIGNED TO THIS WELL 40		13. STATE NM	
18. PROPOSED DEPTH 6000'		20. ROTARY OR CABLE TOOLS ROTARY	
21. ELEVATIONS (Show whether DF, RT, GR, etc.) 3636' GR		22. APPROX. DATE WORK WILL START* 6/1/98	

PROPOSED CASING AND CEMENTING PROGRAM

HOLE SIZE	CASING SIZE	WEIGHT/FOOT	GRADE	THREAD TYPE	SETTING DEPTH	QUANTITY OF CEMENT
12 1/4"	8 5/8"	24#	J-55	LT&C	450'	30 WITNESS
7 7/8"	5 1/2"	17#	J-55	LT&C	6000'	1100 SX, ATTEMPT TO CIRC

PAY ZONE WILL BE SELECTIVELY PERFORATED AND STIMULATED AS NEEDED FOR OPTIMUM PRODUCTION.

- ATTACHED ARE:
1. LOCATION & ACREAGE DEDICATION PLAT
  2. SUPPLEMENTAL DRILLING DATA
  3. USE PLAN

Post ID-1  
5-29-98  
API + LCC

APPROVAL SUBJECT TO  
GENERAL REQUIREMENTS AND  
SPECIAL STIPULATIONS

ATTACHED

IN ABOVE SPACE DESCRIBE PROPOSED PROGRAM: If proposal is to deepen or plug back, give data on present productive zone and proposed new productive zone. If proposal is to drill or deepen directionally, give pertinent data on subsurface locations and measured and true vertical depths. Give blowout preventer program, if any.

24. SIGNED Khonda Nelson TITLE Production Clerk DATE 4/17/98

(This space for Federal or State office use)

PERMIT NO. \_\_\_\_\_ APPROVAL DATE \_\_\_\_\_  
APPROVED BY ORIG. AGO, JOHN S. GIMITE TITLE Acting ADM, MINERALS DATE 5-20-98  
CONDITIONS OF APPROVAL, IF ANY: \_\_\_\_\_

## DISTRICT I

P.O. Box 1980, Hobbs, NM 88241-1980

## DISTRICT II

P.O. Drawer 22, Artesia, NM 88211-0719

## DISTRICT III

1000 Rio Brazos Rd., Aztec, NM 87410

## DISTRICT IV

P.O. Box 2088, Santa Fe, NM 87504-2088

## State of New Mexico

Energy, Minerals and Natural Resources Department

Form C-102

Revised February 10, 1994

Submit to Appropriate District Office

State Lease - 4 Copies

Fee Lease - 3 Copies

## OIL CONSERVATION DIVISION

P.O. Box 2088

Santa Fe, New Mexico 87504-2088

☐ AMENDED REPORT

## WELL LOCATION AND ACREAGE DEDICATION PLAT

API Number	Pool Code	Pool Name WILDCAT; YESO
Property Code	Property Name LEE FEDERAL	Well Number 2
OGRID No. 14049	Operator Name MARBOB ENERGY CORPORATION	Elevation 3636

## Surface Location

UL or lot No.	Section	Township	Range	Lot Idn	Feet from the	North/South line	Feet from the	East/West line	County
E	20	17 S	31 E		1650	NORTH	990	WEST	EDDY

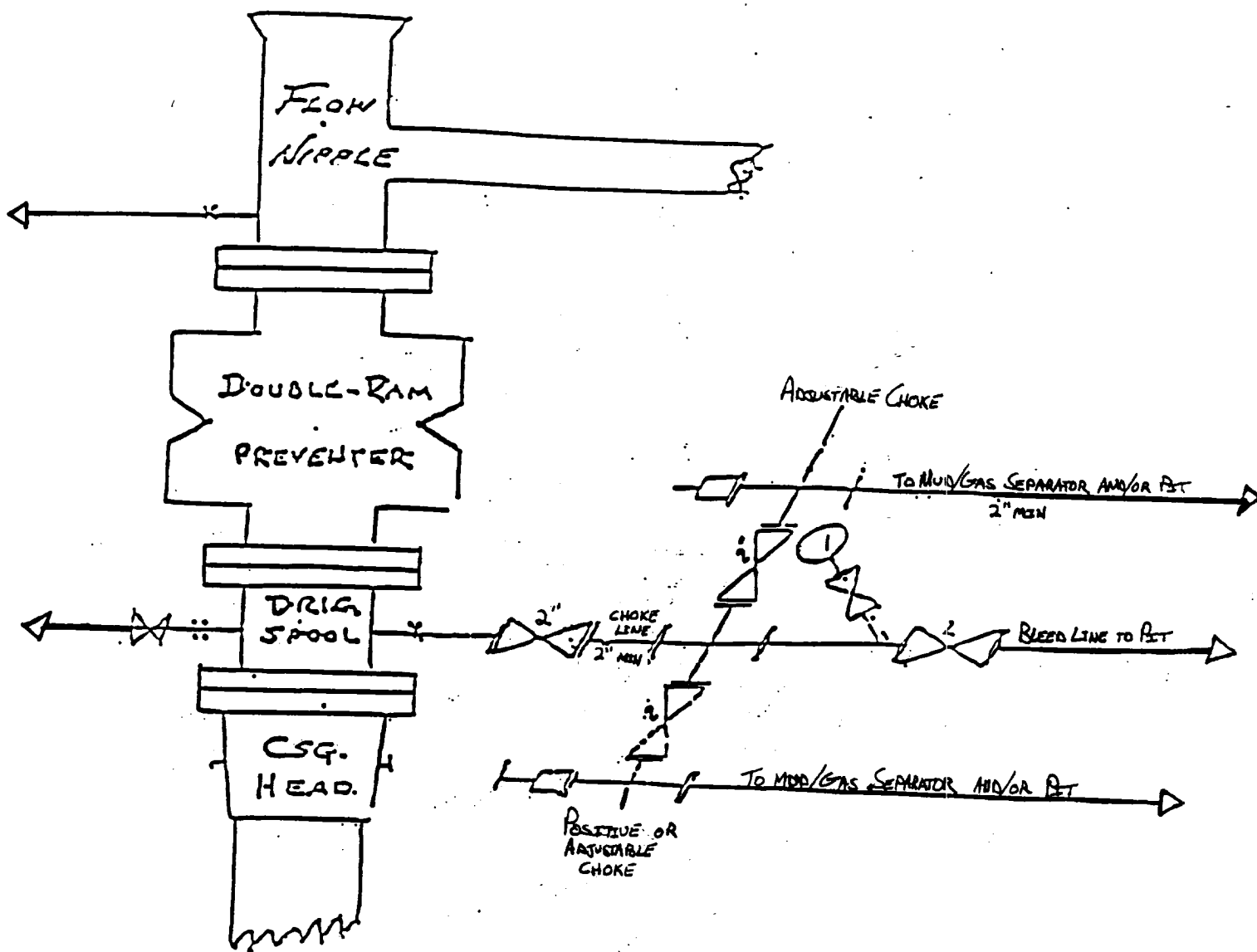
## Bottom Hole Location If Different From Surface

UL or lot No.	Section	Township	Range	Lot Idn	Feet from the	North/South line	Feet from the	East/West line	County
Dedicated Acres 40	Joint or Infill	Consolidation Code	Order No.						

NO ALLOWABLE WILL BE ASSIGNED TO THIS COMPLETION UNTIL ALL INTERESTS HAVE BEEN CONSOLIDATED  
OR A NON-STANDARD UNIT HAS BEEN APPROVED BY THE DIVISION

	<b>OPERATOR CERTIFICATION</b>  I hereby certify the the information contained herein is true and complete to the best of my knowledge and belief.   Signature  RHONDA NELSON Printed Name  PRODUCTION CLERK Title  4/17/98 Date	
	<b>SURVEYOR CERTIFICATION</b>  I hereby certify that the well location shown on this plat was plotted from field notes of actual surveys made by me or under my supervision, and that the same is true and correct to the best of my belief.  MARCH 27, 1998 Date Surveyed Signature & Seal of Professional Surveyor  W.O. Num. 98-11-0520 Certificate No. RONALD J. EDSON, 3239 GARY G. EDSON, 12841 MARGIE McDONALD, 12185	

# BLOW OUT PREVENTER AND CHOKE MANIFOLD



**marbob**  
energy corporation

Lee Federal # 2  
1650' FNL & 990' FWL  
Section 20; T17s -- R31e  
Eddy County, New Mexico

Exhibit # 1

10"/900 Cameron SS Space Saver  
3000# Working Pressure  
3000# Working Pressure Choke Manifold

Attachment to Exhibit #1  
NOTES REGARDING THE BLOWOUT PREVENTERS

1. Drilling nipple to be so constructed that it can be removed without use of a welder through rotary table opening, with minimum I.D. equal to preventer bore.
2. Wear ring to be properly installed in head.
3. Blow out preventer and all fittings must be in good condition, 3000 psi W.P. minimum.
4. All fittings to be flanged.
5. Safety valve must be available on rig floor at all times with proper connections, valve to be full bore 3000 psi W.P. minimum.
6. All choke and fill lines to be securely anchored, especially ends of choke lines.
7. Equipment through which bit must pass shall be at least as large as the diameter of the casing being drilled through.
8. Kelly cock on kelly.
9. Extension wrenches and hand wheels to be properly installed.
10. Blow out preventer control to be located as close to driller's position as feasible.
11. Blow out preventer closing equipment to include minimum 40 gallon accumulator, two independent sources of pump power on each closing unit installation, and meet all API specifications.