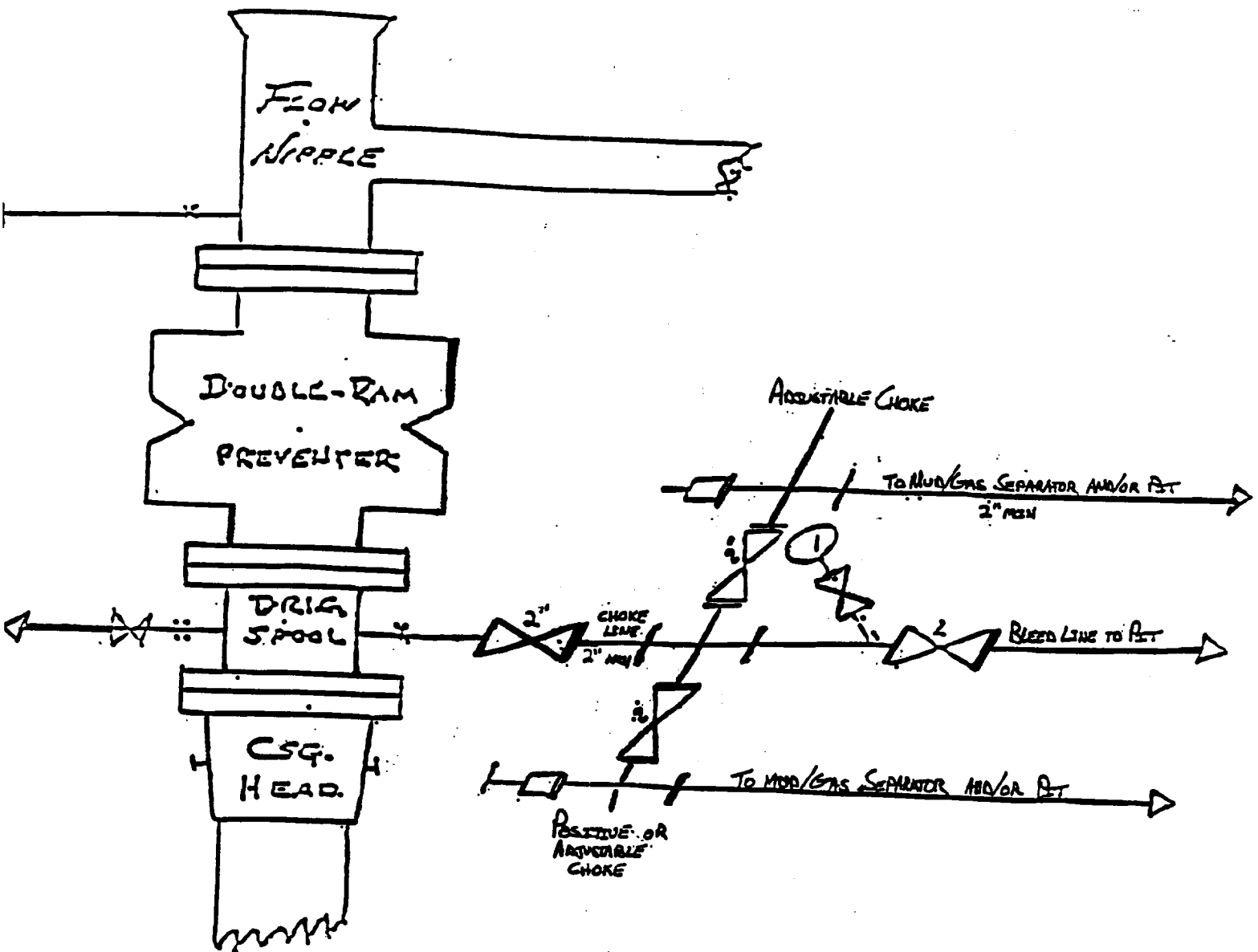


BLOW OUT PREVENTER AND CHOKE MANIFOLD



*10"/900 Cameron SS Space Saver
3000# Working Pressure
3000# Working Pressure Choke Manifold*

Tony Federal # 8
1650' FNL & 330' FWL
Section 19; T17s -- R31e
Eddy County, New Mexico
Exhibit # 1

Attachment to Exhibit #1
NOTES REGARDING THE BLOWOUT PREVENTERS

1. Drilling nipple to be so constructed that it can be removed without use of a welder through rotary table opening, with minimum I.D. equal to preventer bore.
2. Wear ring to be properly installed in head.
3. Blow out preventer and all fittings must be in good condition, 1000 psi W.P. minimum.
4. All fittings to be flanged.
5. Safety valve must be available on rig floor at all times with proper connections, valve to be full bore 1000 psi W.P. minimum.
6. All choke and fill lines to be securely anchored, especially ends of choke lines.
7. Equipment through which bit must pass shall be at least as large as the diameter of the casing being drilled through.
8. Kelly cock on kelly.
9. Extension wrenches and hand wheels to be properly installed.
10. Blow out preventer control to be located as close to driller's position as feasible.
11. Blow out preventer closing equipment to include minimum 40 gallon accumulator, two independent sources of pump power on each closing unit installation, and meet all API specifications.