

UNITED STATES
DEPARTMENT OF THE INTERIOR
BUREAU OF LAND MANAGEMENT

APPLICATION FOR PERMIT TO DRILL, DEEPEN, OR PLUG BACK

1a. TYPE OF WORK
DRILL ☒ DEEPEN ☐ PLUG BACK ☐

b. TYPE OF WELL
OIL WELL ☒ GAS WELL ☐ OTHER ☐

2. NAME OF OPERATOR
Marbob Energy Corporation 14049

3a. Area Code & Phone No.
505-748-3303

3. ADDRESS OF OPERATOR
P. O. BOX 227 Artesia, NM 88210

4. LOCATION OF WELL (Report location clearly and in accordance with any State requirements.)
At surface
330 FSL 736 FWL
At proposed prod. zone
SAME Unit M WC Cedar Lake yes 96831

14. DISTANCE IN MILES AND DIRECTION FROM NEAREST TOWN OR POST OFFICE
EAST OF ARTESIA ON HWY 82 APPROX 29 MILES

15. DISTANCE FROM PROPOSED LOCATION TO NEAREST PROPERTY OR LEASE LINE, FT. (Also to nearest drlg. unit line, if any)
330'

16. NO. OF ACRES IN LEASE
609.33

17. NO. OF ACRES ASSIGNED TO THIS WELL
40

18. DISTANCE FROM PROPOSED LOCATION TO NEAREST WELL, DRILLING, COMPLETED, OR APPLIED FOR, ON THIS LEASE, FT.

19. PROPOSED DEPTH
6000'

20. ROTARY OR CABLE TOOLS
ROTARY

21. ELEVATIONS (Show whether DF, RT, GR, etc.)
3752' GR

22. APPROX. DATE WORK WILL START
SEPTEMBER 1, 1998

PROPOSED CASING AND CEMENT ROOSEVELL CONTROLLED WATER BASIN

HOLE SIZE	CASING SIZE	WEIGHT/FOOT	GRADE	THREAD TYPE	SETTING DEPTH	QUANTITY OF CEMENT
12 1/4"	8 5/8"	24#	J-55	LTC	450'	WITNESS CIRC
7 7/8"	5 1/2"	17#	J-55	LTC	6000'	SUFFICIENT TO COVER 200' ABOVE ALL OIL & GAS HORIZONS

PAY ZONE WILL BE SELECTIVELY STIMULATED AND PERFORATED AS NEEDED FOR OPTIMUM PRODUCTION.

ATTACHED ARE: 1. WELL LOCATION & ACREAGE DEDICATION PLAT
2. SURFACE USE PLAN
3. SUPPLEMENTAL DRILLING DATA

APPROVAL SUBJECT TO
GENERAL REQUIREMENTS AND
SPECIAL STIPULATIONS

ATTACHED

IN ABOVE SPACE DESCRIBE PROPOSED PROGRAM: If proposal is to deepen or plug back, give data on present productive zone and proposed new productive zone. If proposal is to drill or deepen directionally, give pertinent data on subsurface locations and measured and true vertical depths. Give blowout preventer program, if any.

24. SIGNED Phonda Nelson TITLE Production Clerk DATE 7/24/98
(This space for Federal or State office use)

PERMIT NO. _____ APPROVAL DATE _____
Acting Assistant Field Office Manager,
APPROVED BY (ORIG. SGD.) ARMANDO A. LOPEZ Lands and Minerals
CONDITIONS OF APPROVAL, IF ANY: _____ DATE AUG 26 1998

DISTRICT I
P.O. Box 1980, Hobbs, NM 88241-1980

State of New Mexico
Energy, Minerals and Natural Resources Department

Form C-102
Revised February 10, 1994
Submit to Appropriate District Office
State Lease - 4 Copies
Fee Lease - 3 Copies

DISTRICT II
P.O. Drawer DD, Artesia, NM 86211-0719

DISTRICT III
1000 Rio Brazos Rd., Aztec, NM 87410

DISTRICT IV
P.O. BOX 2088, SANTA FE, N.M. 87504-2088

OIL CONSERVATION DIVISION

P.O. Box 2088
Santa Fe, New Mexico 87504-2088

☐ AMENDED REPORT

WELL LOCATION AND ACREAGE DEDICATION PLAT

API Number	Pool Code 76748	Pool Name BOCO REELS FADDOCK
Property Code	Property Name TONY FEDERAL	Well Number 9
OGRID No. 14049	Operator Name MARBOB ENERGY CORPORATION	Elevation 3752

Surface Location

UL or lot No. LOT 4	Section 18	Township 17 S	Range 31 E	Lot Idn	Feet from the 330	North/South line SOUTH	Feet from the 736	East/West line WEST	County EDDY
------------------------	---------------	------------------	---------------	---------	----------------------	---------------------------	----------------------	------------------------	----------------

Bottom Hole Location If Different From Surface

UL or lot No.	Section	Township	Range	Lot Idn	Feet from the	North/South line	Feet from the	East/West line	County
Dedicated Acres 40		Joint or Infill	Consolidation Code	Order No.					

NO ALLOWABLE WILL BE ASSIGNED TO THIS COMPLETION UNTIL ALL INTERESTS HAVE BEEN CONSOLIDATED
OR A NON-STANDARD UNIT HAS BEEN APPROVED BY THE DIVISION

LOT 1									
31.99 ACRES LOT 2									
32.10 ACRES LOT 3									
32.20 ACRES LOT 4 32.31 ACRES									

3756.9' 3756.7'
3748.8' 3732.8'
DETAIL

736' 330'

SEE DETAIL

OPERATOR CERTIFICATION

I hereby certify the the information contained herein is true and complete to the best of my knowledge and belief.

Rhonda Nelson
Signature
RHONDA NELSON
Printed Name
PRODUCTION ANALYST
Title
7/23/98
Date

SURVEYOR CERTIFICATION

I hereby certify that the well location shown on this plat was plotted from field notes of actual surveys made by me or under my supervision, and that the same is true and correct to the best of my belief.

JULY 8, 1998

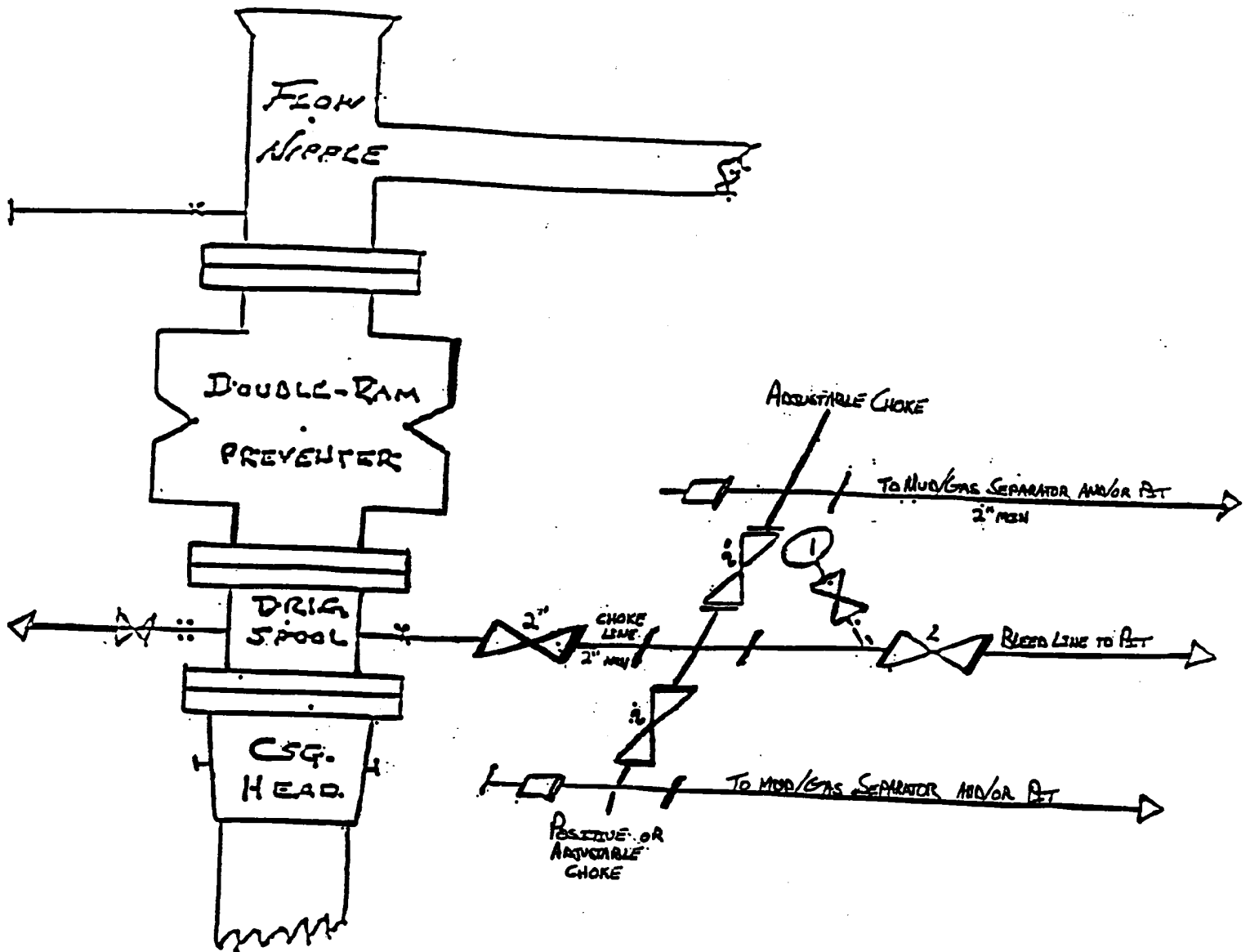
Date Surveyed DMCC

Signature & Seal of Professional Surveyor

Ronald J. Eidson
2039
68-11-0987

Certificate No. RONALD J. EIDSON 3239
GARY EIDSON 12641
RONALD J. EIDSON 12185

BLOW OUT PREVENTER AND CHOKE MANIFOLD



10"/900 Cameron SS Space Saver
 3000# Working Pressure
 3000# Working Pressure Choke Manifold

Tony Federal # 9
 330' FSL & 736' FWL
 Section 18; T17s -- R31e
 Eddy County, New Mexico

Exhibit # 1

Attachment to Exhibit #1
NOTES REGARDING THE BLOWOUT PREVENTERS

1. Drilling nipple to be so constructed that it can be removed without use of a welder through rotary table opening, with minimum I.D. equal to preventer bore.
2. Wear ring to be properly installed in head.
3. Blow out preventer and all fittings must be in good condition, 1000 psi W.P. minimum.
4. All fittings to be flanged.
5. Safety valve must be available on rig floor at all times with proper connections, valve to be full bore 1000 psi W.P. minimum.
6. All choke and fill lines to be securely anchored, especially ends of choke lines.
7. Equipment through which bit must pass shall be at least as large as the diameter of the casing being drilled through.
8. Kelly cock on kelly.
9. Extension wrenches and hand wheels to be properly installed.
10. Blow out preventer control to be located as close to driller's position as feasible.
11. Blow out preventer closing equipment to include minimum 40 gallon accumulator, two independent sources of pump power on each closing unit installation, and meet all API specifications.