

## N. M. Oil Cons. Division

811 S. 1ST ST.

ARTESIA, NM 88210-2834

Form 3160-3

(July 1989)

(formerly 9-331C)

CONTACT RECEIVING  
OFFICE NUMBER

OF COPIES REQUIRED

(Other instructions on  
reverse side)

30-015-30392

BLM Roswell District

Modified Form No.

ND60-3160-2

UNITED STATES  
DEPARTMENT OF THE INTERIOR

BUREAU OF LAND MANAGEMENT 2-27-97 RAM

## APPLICATION FOR PERMIT TO DRILL, DEEPEN, OR PLUG BACK

## 1a. TYPE OF WORK

DRILL ☒DEEPEN ☐PLUG BACK ☐

## b. TYPE OF WELL

OIL

WELL ☒

GAS

WELL ☐OTHER ☐

SINGLE

ZONE ☐

MULTIPLE

ZONE ☐

## 2. NAME OF OPERATOR

Marbob Energy Corporation

## 3a. Area Code &amp; Phone No.

505-748-3303

## 3. ADDRESS OF OPERATOR

P. O. Drawer 217, Artesia, NM 88210

## 4. LOCATION OF WELL (Report location clearly and in accordance with any State requirements.)

At surface

1650 FNL 330 FEL

At proposed prod. zone

SAME

Unit H

## 14. DISTANCE IN MILES AND DIRECTION FROM NEAREST TOWN OR POST OFFICE\*

EAST OF ARTESIA ON HWY 82 APPROX. 20.7 MILES

## 15. DISTANCE FROM PROPOSED\*

LOCATION TO NEAREST  
PROPERTY OR LEASE LINE, FT.  
(Also to nearest drlg. unit line, if any)

330'

## 16. NO. OF ACRES IN LEASE

600

## 18. DISTANCE FROM PROPOSED LOCATION\*

TO NEAREST WELL, DRILLING, COMPLETED,  
OR APPLIED FOR, ON THIS LEASE, FT.

## 19. PROPOSED DEPTH

6100'

17. NO. OF ACRES ASSIGNED  
TO THIS WELL

40

## 20. ROTARY OR CABLE TOOLS

ROTARY

## 21. ELEVATIONS (Show whether DF, RT, GR, etc.)

3576' GR

ROSWELL CONTROLLED WATER BASIN

## 22. APPROX. DATE WORK WILL START\*

MAY 15, 1997

## 23. PROPOSED CASING AND CEMENTING PROGRAM

HOLE SIZE	CASING SIZE	WEIGHT/FOOT	GRADE	THREAD TYPE	SETTING DEPTH	QUANTITY OF CEMENT
12 1/4"	8 5/8"	24#	J-55	2T&C	350'	300 SX
7 7/8"	5 1/2"	17#	J-55	LT&C	6100'	1100 SX

PAY ZONE WILL BE SELECTIVELY STIMULATED AND PERFORATED AS  
NEEDED FOR OPTIMUM PRODUCTION.ATTACHED ARE: 1. LOCATION & ACREAGE DEDICATION PLAT  
2. SUPPLEMENTAL DRILLING DATA  
3. SURFACE USE PLANAPPROVAL SUBJECT TO  
GENERAL REQUIREMENTS AND  
SPECIAL STIPULATIONS  
ATTACHED

RECEIVED

FEB 26 '97

BLM  
ROSWELL, NM

IN ABOVE SPACE DESCRIBE PROPOSED PROGRAM: If proposal is to deepen or plug back, give data on present productive zone and proposed new productive zone. If proposal is to drill or deepen directionally, give pertinent data on subsurface locations and measured and true vertical depths. Give blowout preventer program, if any.

24.

SIGNED

Rhonda Nelson  
TITLE Production Clerk

DATE 2/26/97

(This space for Federal or State office use)

PERMIT NO.

Acting

APPROVAL DATE

Assistant Field Office Manager,  
Lands and Minerals

APPROVED BY

(ORIG. SEC.) ARMANDO A. LOPEZ

TITLE

DATE SEP 21 1998

CONDITIONS OF APPROVAL, IF ANY:

DISTRICT I  
P.O. Box 1980, Hobbs, NM 88241-1980

State of New Mexico  
Energy, Minerals and Natural Resources Department

Form C-102  
Revised February 10, 1994  
Submit to Appropriate District Office  
State Lease - 4 Copies  
Fee Lease - 3 Copies

DISTRICT II  
P.O. Drawer DD, Artesia, NM 88211-0719

DISTRICT III  
1000 Rio Brazos Rd., Aztec, NM 87410

DISTRICT IV  
P.O. BOX 2088, SANTA FE, N.M. 87504-2088

OIL CONSERVATION DIVISION

P.O. Box 2088  
Santa Fe, New Mexico 87504-2088

☐ AMENDED REPORT

WELL LOCATION AND ACREAGE DEDICATION PLAT

API Number	Pool Code 96610	Pool Name E. EMPIRE YESO
Property Code 19485	Property Name BARNSDALL FEDERAL	Well Number 11
OGRID No. 14049	Operator Name MARBOB ENERGY CORPORATION	Elevation 3576

Surface Location

UL or lot No. H	Section 27	Township 17 S	Range 29 E	Lot Idn	Feet from the 1650	North/South line NORTH	Feet from the 330	East/West line EAST	County EDDY
--------------------	---------------	------------------	---------------	---------	-----------------------	---------------------------	----------------------	------------------------	----------------

Bottom Hole Location If Different From Surface

UL or lot No.	Section	Township	Range	Lot Idn	Feet from the	North/South line	Feet from the	East/West line	County
Dedicated Acres	Joint or Infill	Consolidation Code	Order No.						

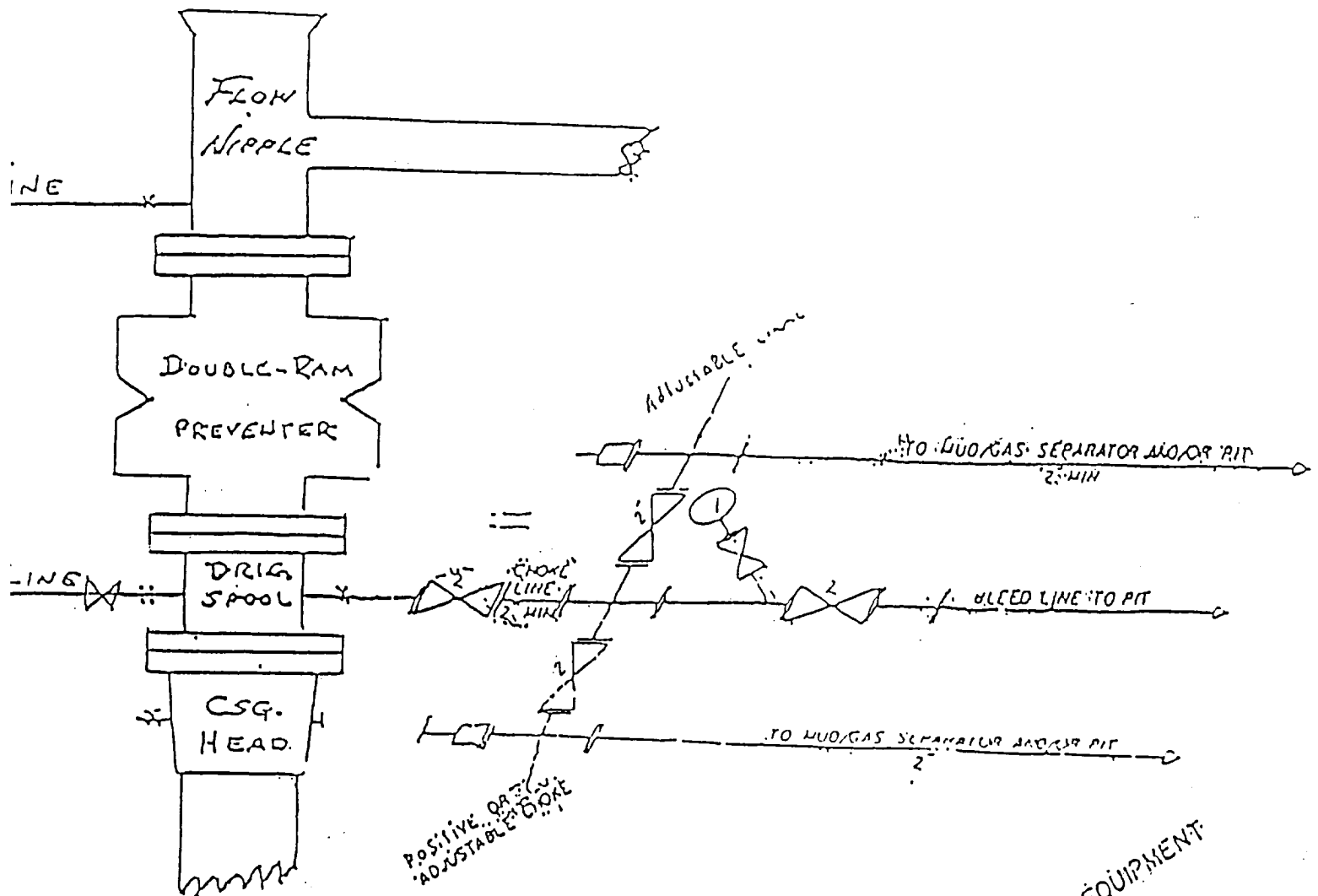
NO ALLOWABLE WILL BE ASSIGNED TO THIS COMPLETION UNTIL ALL INTERESTS HAVE BEEN CONSOLIDATED  
OR A NON-STANDARD UNIT HAS BEEN APPROVED BY THE DIVISION

				<p><b>OPERATOR CERTIFICATION</b></p> <p>I hereby certify the the information contained herein is true and complete to the best of my knowledge and belief.</p> <p><i>Rhonda Nelson</i> Signature</p> <p>RHONDA NELSON Printed Name</p> <p>PRODUCTION CLERK Title</p> <p>2/26/97 Date</p>	
<p><b>SURVEYOR CERTIFICATION</b></p> <p>I hereby certify that the well location shown on this plat was plotted from field notes of actual surveys made by me or under my supervision, and that the same is true and correct to the best of my belief.</p> <p>NOV. 15, 1996 Date Surveyed</p> <p>DMCC Professional Surveyor</p> <p><i>Ronald W. Eidsen</i> Signature &amp; Seal of Professional Surveyor</p> <p>11-21-96 Certificate No.</p> <p>JOHN W. WEST 676 RONALD W. EIDSON 3239 GARY EIDSON 12641</p>					

EXHIBIT #1

# B O P & CHOKE MANIFOLD

10"/900 Cameron SS Space Saver  
3000# Working Pressure  
3.000# Working Pressure Choke Manifold



MARBOB ENERGY CORPORATION

Barnsdall Federal No. 11  
1650' FNL and 330' FEL  
Section 27-17S-29E  
Eddy County, New Mexico  
Exhibit #1

2 1/4" CHOKE MANIFOLD EQUIPMENT

Attachment to Exhibit #1  
NOTES REGARDING THE BLOWOUT PREVENTERS

1. Drilling nipple to be so constructed that it can be removed without use of a welder through rotary table opening, with minimum I.D. equal to preventer bore.
2. Wear ring to be properly installed in head.
3. Blow out preventer and all fittings must be in good condition, 3000 psi W.P. minimum.
4. All fittings to be flanged.
5. Safety valve must be available on rig floor at all times with proper connections, valve to be full bore 3000 psi W.P. minimum.
6. All choke and fill lines to be securely anchored, especially ends of choke lines.
7. Equipment through which bit must pass shall be at least as large as the diameter of the casing being drilled through.
8. Kelly cock on kelly.
9. Extension wrenches and hand wheels to be properly installed.
10. Blow out preventer control to be located as close to driller's position as feasible.
11. Blow out preventer closing equipment to include minimum 40 gallon accumulator, two independent sources of pump power on each closing unit installation, and meet all API specifications.