

J-3  
91  
(formerly 9-131C)

N. M. OFFICE OF COPIES REQUIRED  
ARTESIA (Other instructions on reverse side)

30-015-30393

BLM Roswell District  
Modified Form No.  
NM60-3160-2

UNITED STATES  
DEPARTMENT OF THE INTERIOR  
BUREAU OF LAND MANAGEMENT

APPLICATION FOR PERMIT TO DRILL, DEEPEN, OR PLUG BACK

1a. TYPE OF WORK  
DRILL ☒ DEEPEN ☐ PLUG BACK ☐

b. TYPE OF WELL  
OIL WELL ☒ GAS WELL ☐ OTHER ☐

2. NAME OF OPERATOR  
Marbob Energy Corporation 14049

3a. Area Code & Phone No.  
505-748-3303

3. ADDRESS OF OPERATOR  
P. O. BOX 227 Artesia, NM 88210

4. LOCATION OF WELL (Report location clearly and in accordance with any State requirements.)  
At surface 2310 FSL 1650 FEL  
At proposed prod. zone SAME UNIT J

14. DISTANCE IN MILES AND DIRECTION FROM NEAREST TOWN OR POST OFFICE  
APPROX 20.2 MILES EAST OF ARTESIA ON HWY 82

15. DISTANCE FROM PROPOSED LOCATION TO NEAREST PROPERTY OR LEASE LINE, FT.  
(Also to nearest drilg. unit line, if any) 1650'

16. NO. OF ACRES IN LEASE  
400

17. NO. OF ACRES ASSIGNED TO THIS WELL  
40

18. DISTANCE FROM PROPOSED LOCATION TO NEAREST WELL, DRILLING, COMPLETED, OR APPLIED FOR, ON THIS LEASE, FT.  
5000'

19. PROPOSED DEPTH  
5000'

20. ROTARY OR CABLE TOOLS  
ROTARY

21. ELEVATIONS (Show whether DF, RT, GR, etc.)  
3652' GR

22. APPROX. DATE WORK WILL START  
4/1/98

5. LEASE DESIGNATION AND SERIAL NO.  
LC-028775A

6. IF INDIAN, ALLOTTEE OR TRIBE NAME

7. UNIT AGREEMENT NAME

8. FARM OR LEASE NAME  
B 440 FEDERAL 23171

9. WELL NO.  
1

10. FIELD AND POOL, OR WILDCAT  
E. EMPIRE YESO 96610

11. SEC., T., R., M., OR BLK. AND SURVEY OR AREA  
SEC. 27-T17S-R29E

12. COUNTY OR PARISH  
EDDY

13. STATE  
NM

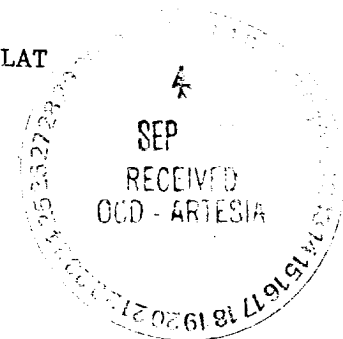
PROPOSED CASING AND CEMENTING PROGRAM

HOLE SIZE	CASING SIZE	WEIGHT/FOOT	GRADE	THREAD TYPE	SETTING DEPTH	QUANTITY OF CEMENT
12 1/4"	8 5/8"	24#	J-55	LT&C	350'	300 SX
7 7/8"	5 1/2"	17#	J-55	LT&C	5000'	1100 SX

PAY ZONE WILL BE SELECTIVELY STIMULATED AND PERFORATED AS NEEDED FOR OPTIMUM PRODUCTION.

- ATTACHED ARE:
1. LOCATION & ACREAGE DEDICATION PLAT
  2. SUPPLEMENTAL DRILLING DATA
  3. SURFACE USE PLAN

Post ID 1  
9-4-98  
API & LCC



IN ABOVE SPACE DESCRIBE PROPOSED PROGRAM: If proposal is to deepen or plug back, give data on present productive zone and proposed new productive zone. If proposal is to drill or deepen directionally, give pertinent data on subsurface locations and measured and true vertical depths. Give blowout preventer program, if any.

24. SIGNATURE Phonda Nelson TITLE Production Clerk DATE 2/3/98

(This space for Federal or State office use)

PERMIT NO. \_\_\_\_\_ APPROVED BY (ORIG. SGD.) ARMANDO A. LOPEZ TITLE Acting Assistant Field Office Manager, Lands and Minerals DATE SEP 01 1998

\*See Instructions On Reverse Side

DISTRICT I  
P.O. Box 1980, Hobbs, NM 88241-1980

State of New Mexico  
Energy, Minerals and Natural Resources Department

Form C-102  
Revised February 10, 1994  
Submit to Appropriate District Office  
State Lease - 4 Copies  
Fee Lease - 3 Copies

DISTRICT II  
P.O. Drawer ED, Artesia, NM 86211-0719

DISTRICT III  
1000 Rio Brazos Rd., Aztec, NM 87410

OIL CONSERVATION DIVISION

P.O. Box 2088  
Santa Fe, New Mexico 87504-2088

DISTRICT IV  
P.O. Box 2088, Santa Fe, NM 87504-2088

☐ AMENDED REPORT

WELL LOCATION AND ACREAGE DEDICATION PLAT

API Number	Pool Code 96610	Pool Name E. EMPIRE YESO
Property Code	Property Name B440 FEDERAL	Well Number 1
OGRID No. 14049	Operator Name MARBOB ENERGY CORPORATION	Elevation 3562

Surface Location

UL or lot No. J	Section 27	Township 17 S	Range 29 E	Lot Idn	Feet from the 2310	North/South line SOUTH	Feet from the 1650	East/West line EAST	County EDDY
--------------------	---------------	------------------	---------------	---------	-----------------------	---------------------------	-----------------------	------------------------	----------------

Bottom Hole Location If Different From Surface

UL or lot No.	Section	Township	Range	Lot Idn	Feet from the	North/South line	Feet from the	East/West line	County
Dedicated Acres		Joint or Infill	Consolidation Code	Order No.					

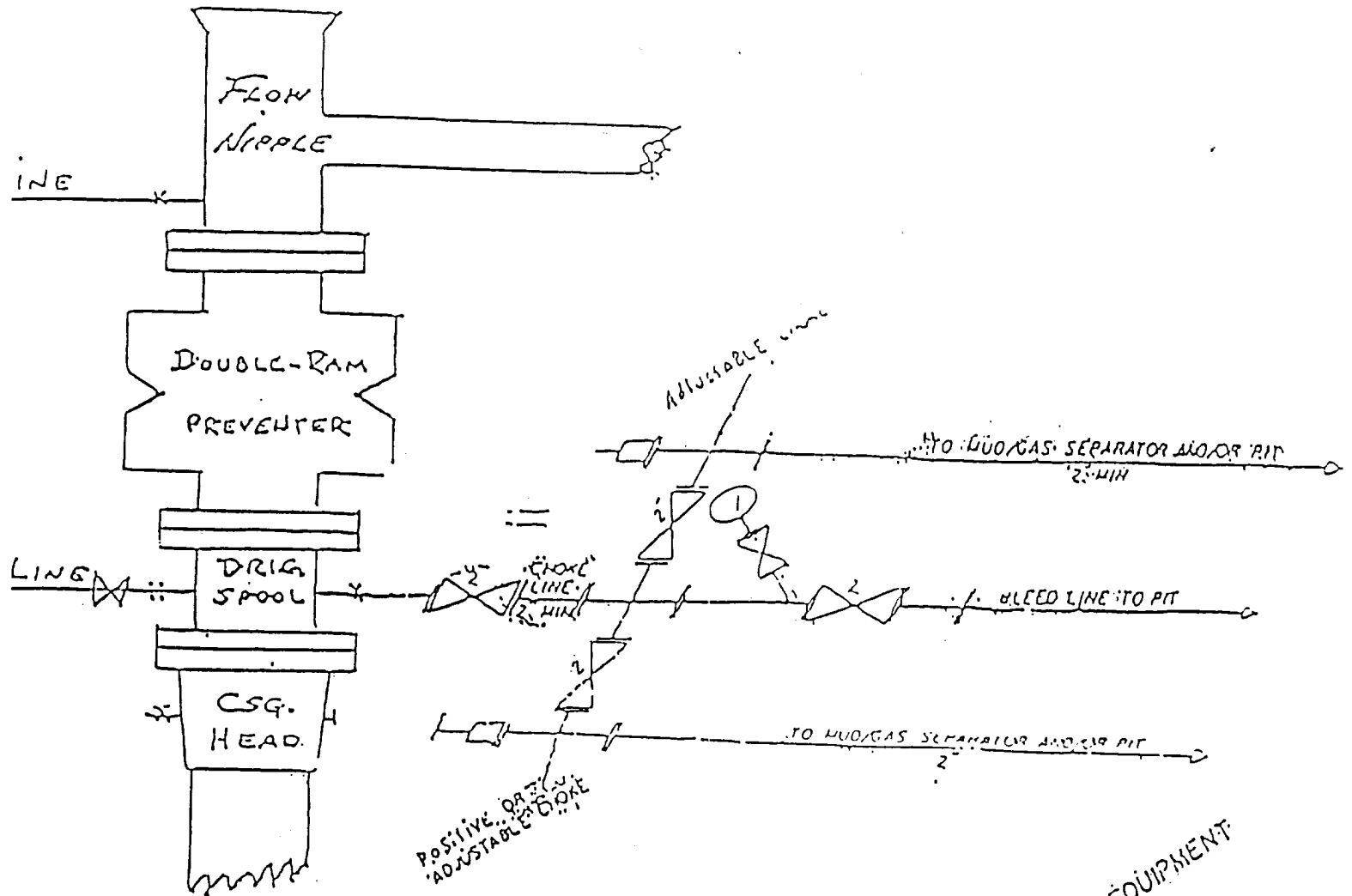
NO ALLOWABLE WILL BE ASSIGNED TO THIS COMPLETION UNTIL ALL INTERESTS HAVE BEEN CONSOLIDATED  
OR A NON-STANDARD UNIT HAS BEEN APPROVED BY THE DIVISION

	<b>OPERATOR CERTIFICATION</b> <i>I hereby certify the the information contained herein is true and complete to the best of my knowledge and belief.</i>  Signature RHONDA NELSON Printed Name PRODUCTION CLERK Title 2/3/98 Date
	<b>SURVEYOR CERTIFICATION</b> <i>I hereby certify that the well location shown on this plat was plotted from field notes of actual surveys made by me or under my supervision, and that the same is true and correct to the best of my belief.</i> JANUARY 19, 1998 Date Surveyed JLP Signature & Seal of Professional Surveyor  W.O. Num. 98-11-0042 Certificate No. RONALD E. EDSON, 3239 GARY D. EDSON, 12641 NACON WEDONALD, 12185

EXHIBIT #1

# B O P & CHOKE MANIFOLD

10"/900 Cameron SS Space Saver  
3000# Working Pressure  
3.000# Working Pressure Choke Manifold



## MARBOB ENERGY CORPORATION

B-440 Federal No. 1

2310' FSL and 1650' FEL

Section 27, T-17S, R-29E

Eddy County, New Mexico

Exhibit #1

Attachment to Exhibit #1  
NOTES REGARDING THE BLOWOUT PREVENTERS

1. Drilling nipple to be so constructed that it can be removed without use of a welder through rotary table opening, with minimum I.D. equal to preventer bore.
2. Wear ring to be properly installed in head.
3. Blow out preventer and all fittings must be in good condition, 1000 psi W.P. minimum.
4. All fittings to be flanged.
5. Safety valve must be available on rig floor at all times with proper connections, valve to be full bore 1000 psi W.P. minimum.
6. All choke and fill lines to be securely anchored, especially ends of choke lines.
7. Equipment through which bit must pass shall be at least as large as the diameter of the casing being drilled through.
8. Kelly cock on kelly.
9. Extension wrenches and hand wheels to be properly installed.
10. Blow out preventer control to be located as close to driller's position as feasible.
11. Blow out preventer closing equipment to include minimum 40 gallon accumulator, two independent sources of pump power on each closing unit installation, and meet all API specifications.