

UNITED STATES
DEPARTMENT OF THE INTERIOR
BUREAU OF LAND MANAGEMENT

APPLICATION FOR PERMIT TO DRILL, DEEPEN, OR PLUG BACK

1a. TYPE OF WORK

DRILL ☒

DEEPEN ☐

PLUG BACK ☐

b. TYPE OF WELL

OIL WELL ☒

GAS WELL ☐

OTHER

SINGLE ZONE ☐

MULTIPLE ZONE ☐

2. NAME OF OPERATOR

Marbob Energy Corporation

14049

3a. Area Code & Phone No.

505-748-3303

3. ADDRESS OF OPERATOR

P. O. BOX 227 Artesia, NM 88210

4. LOCATION OF WELL (Report location clearly and in accordance with any State requirements.)

At surface
2310 FSL 330 FEL

At proposed prod. zone

SAME

Unit I

14. DISTANCE IN MILES AND DIRECTION FROM NEAREST TOWN OR POST OFFICE*

EAST OF ARTESIA ON HWY 82 APPROX 30.1 MILES

15. DISTANCE FROM PROPOSED*

LOCATION TO NEAREST
PROPERTY OR LEASE LINE, FT.
(Also to nearest drig. unit line, if any)

330' GR

16. NO. OF ACRES IN LEASE

1800

17. NO. OF ACRES ASSIGNED
TO THIS WELL

40

18. DISTANCE FROM PROPOSED LOCATION*

TO NEAREST WELL, DRILLING, COMPLETED,
OR APPLIED FOR, ON THIS LEASE, FT.

19. PROPOSED DEPTH

6000'

20. ROTARY OR CABLE TOOLS

ROTARY

21. ELEVATIONS (Show whether DF, RT, GR, etc.)

3740' GR

ROSWELL CONTROLLED WATER BASIN

22. APPROX. DATE WORK WILL START*

SEPTEMBER 15, 1998

PROPOSED CASING AND CEMENTING PROGRAM

HOLE SIZE	CASING SIZE	WEIGHT/FOOT	GRADE	THREAD TYPE	SETTING DEPTH	QUANTITY OF CEMENT
12 1/4"	8 5/8"	24#	J-55	LTC	WITNESS	300 SX, CIRC
7 7/8"	5 1/2"	17#	J-55	LTC	6000'	SUFFICIENT TO
						COVER 200' ABOVE
						ALL OIL & GAS
						HORIZONS

APPROVAL SUBJECT TO
GENERAL REQUIREMENTS AND
SPECIAL STIPULATIONS
ATTACHED

PAY ZONE WILL BE SELECTIVELY PERFORATED AND STIMULATED AS
NEEDED FOR OPTIMUM PRODUCTION.

ATTACHED ARE: 1. ACREAGE LOCATION & DEDICATION PLAT
2. SUPPLEMENTAL DRILLING DATA
3. SURFACE USE PLAN

Post ID-1
10-9-98
API & LOC



IN ABOVE SPACE DESCRIBE PROPOSED PROGRAM: If proposal is to deepen or plug back, give data on present productive zone and proposed new productive zone. If proposal is to drill or deepen directionally, give pertinent data on subsurface locations and measured and true vertical depths. Give blowout preventer program, if any.

SIGNED Robin Cockrum

TITLE Production Clerk

DATE 8/4/98

(This space for Federal or State office use)

PERMIT NO.

/S/ Earle Smith

Acting

APPROVAL DATE
Assistant Field Office Manager,
Lands and Minerals

APPROVED BY
CONDITIONS OF APPROVAL, IF ANY:

DATE SEP 29 1998

*See Instructions On Reverse Side

DISTRICT I

P.O. Box 1980, Hobbs, NM 88241-1980

State of New Mexico

Energy, Minerals and Natural Resources Department

Form C-102

Revised February 10, 1994

Submit to Appropriate District Office

State Lease - 4 Copies

Fee Lease - 3 Copies

DISTRICT II

P.O. Drawer DD, Artesia, NM 88211-0719

DISTRICT III

1000 Rio Brazos Rd., Aztec, NM 87410

DISTRICT IV

P.O. BOX 2088, SANTA FE, N.M. 87504-2088

OIL CONSERVATION DIVISION

P.O. Box 2088

Santa Fe, New Mexico 87504-2088

☐ AMENDED REPORT

WELL LOCATION AND ACREAGE DEDICATION PLAT

API Number	Pool Code 96718	Pool Name LOCO HILLS PADDOCK
Property Code 23300	Property Name LEE FEDERAL	Well Number 13
OGRID No. 14049	Operator Name MARBOB ENERGY CORPORATION	Elevation 3740

Surface Location

UL or lot No.	Section	Township	Range	Lot Idn	Feet from the	North/South line	Feet from the	East/West line	County
I	20	17 S	31 E		2310	SOUTH	330	EAST	EDDY

Bottom Hole Location If Different From Surface

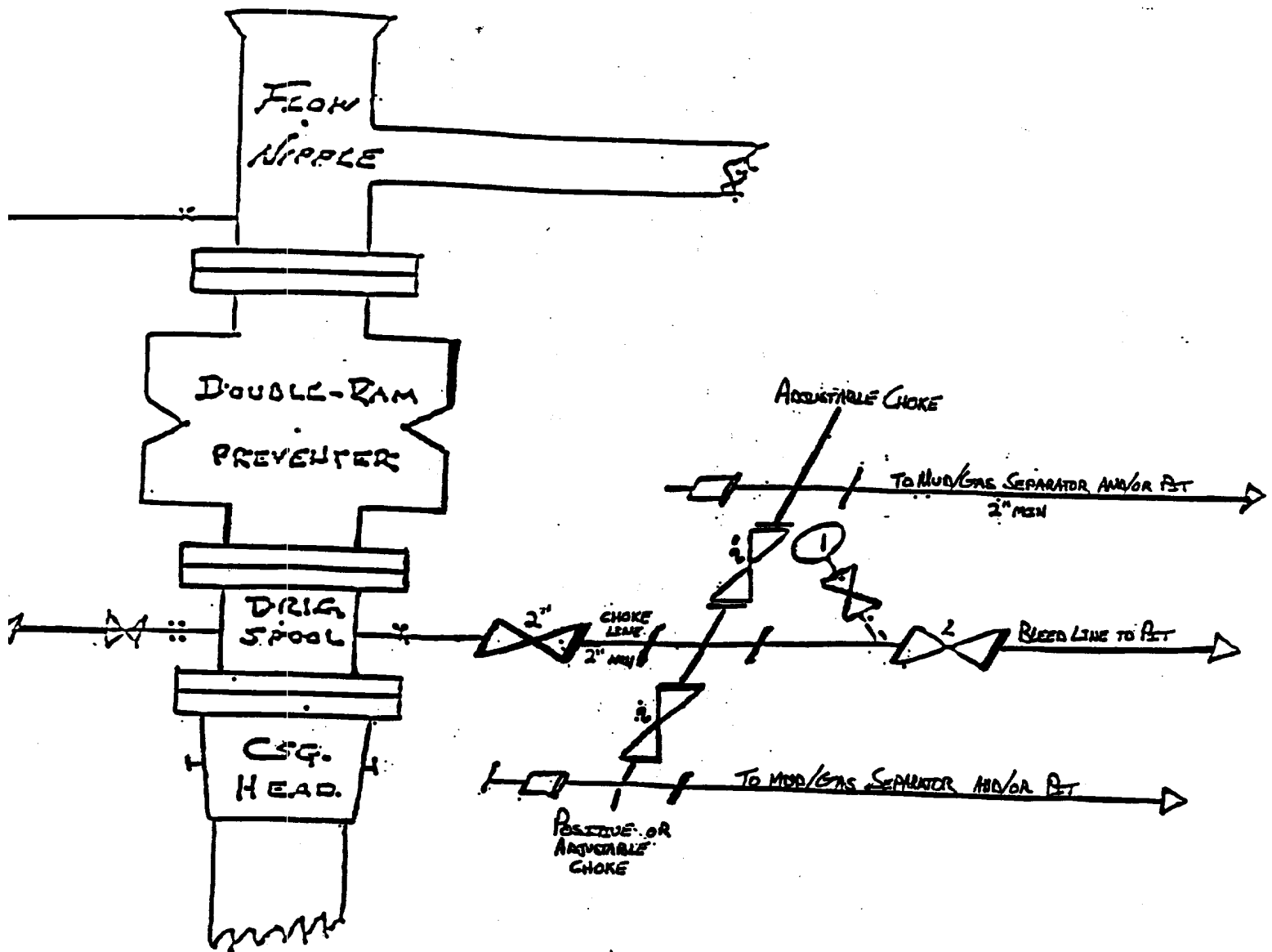
UL or lot No.	Section	Township	Range	Lot Idn	Feet from the	North/South line	Feet from the	East/West line	County

Dedicated Acres 40	Joint or Infill	Consolidation Code	Order No.
-----------------------	-----------------	--------------------	-----------

NO ALLOWABLE WILL BE ASSIGNED TO THIS COMPLETION UNTIL ALL INTERESTS HAVE BEEN CONSOLIDATED
OR A NON-STANDARD UNIT HAS BEEN APPROVED BY THE DIVISION

	OPERATOR CERTIFICATION I hereby certify the the information contained herein is true and complete to the best of my knowledge and belief. Signature ROBIN COCKRUM Printed Name PRODUCTION ANALYST Title 8/4/98 Date
	SURVEYOR CERTIFICATION I hereby certify that the well location shown on this plat was plotted from field notes of actual surveys made by me or under my supervision, and that the same is true and correct to the best of my belief. JULY 13, 1998 Date Surveyed Signature of Surveyor Professional Surveyor Certificate No. 3239 RONALD S. EDSON 12641 DONALD 12185

BLOW OUT PREVENTER AND CHOKE MANIFOLD



10"/900 Cameron SS Space Saver
3000# Working Pressure
3000# Working Pressure Choke Manifold

Lee Federal # 13
2310' FSL & 330' FEL
Section 20; T17s --R31e
Eddy County, New Mexico

Exhibit # 1

Attachment to Exhibit #1
NOTES REGARDING THE BLOWOUT PREVENTERS

1. Drilling nipple to be so constructed that it can be removed without use of a welder through rotary table opening, with minimum I.D. equal to preventer bore.
2. Wear ring to be properly installed in head.
3. Blow out preventer and all fittings must be in good condition, 1000 psi W.P. minimum.
4. All fittings to be flanged.
5. Safety valve must be available on rig floor at all times with proper connections, valve to be full bore 1000 psi W.P. minimum.
6. All choke and fill lines to be securely anchored, especially ends of choke lines.
7. Equipment through which bit must pass shall be at least as large as the diameter of the casing being drilled through.
8. Kelly cock on kelly.
9. Extension wrenches and hand wheels to be properly installed.
10. Blow out preventer control to be located as close to driller's position as feasible.
11. Blow out preventer closing equipment to include minimum 40 gallon accumulator, two independent sources of pump power on each closing unit installation, and meet all API specifications.