

DEPARTMENT OF THE INTERIOR

BUREAU OF LAND MANAGEMENT

OFFICE FOR NUMBER  
OF COPIES REQUIRED  
(Other limitations on  
reversion side)

30-015-30491

BLM Roswell District  
Modified Form No.  
NM060-3160-2

APPLICATION FOR PERMIT TO DRILL, DEEPEN, OR PLUG BACK

1a. TYPE OF WORK

DRILL ☒

DEEPEN ☐

PLUG BACK ☐

b. TYPE OF WELL

OIL  
WELL ☒

GAS  
WELL ☐

OTHER ☐

SINGLE  
ZONE ☐

MULTIPLE  
ZONE ☐

2. NAME OF OPERATOR

Marbob Energy Corporation

14049

3a. Area Code & Phone No.

505-748-3303

3. ADDRESS OF OPERATOR

P. O. BOX 227 Artesia, NM 88210

4. LOCATION OF WELL (Report location clearly and in accordance with any State requirements.)\*

At surface

1295 FSL 660 FWL

At proposed prod. zone

SAME

14. DISTANCE IN MILES AND DIRECTION FROM NEAREST TOWN OR POST OFFICE\*

EAST OF ARTESIA ON HWY 82 APPROX 21.7 MILES

15. DISTANCE FROM PROPOSED\*

LOCATION TO NEAREST  
PROPERTY OR LEASE LINE, FT.  
(Also to nearest drlg. unit line, if any)

660'

16. NO. OF ACRES IN LEASE

800

17. NO. OF ACRES ASSIGNED  
TO THIS WELL

40

18. DISTANCE FROM PROPOSED LOCATION\*

TO NEAREST WELL, DRILLING, COMPLETED,  
OR APPLIED FOR, ON THIS LEASE, FT.

19. PROPOSED DEPTH

4800'

20. ROTARY OR CABLE TOOLS

ROTARY

21. ELEVATIONS (Show whether DF, RT, GR, etc.)

3592' GR

22. APPROX. DATE WORK WILL START\*

NOVEMBER 1, 1998

PROPOSED CASING AND CEMENTING PROGRAM

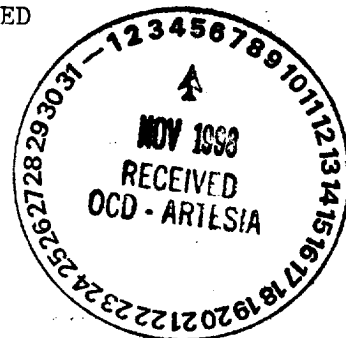
HOLE SIZE	CASING SIZE	WEIGHT/FOOT	GRADE	THREAD TYPE	SETTING DEPTH	QUANTITY OF CEMENT
12 1/4"	8 5/8"	24#	J-55	ST&C	350'	300 SX, CIRC
7 7/8"	5 1/2"	17#	J-55	LT&C	4800'	SUFFICIENT TO COVER ALL OIL & GAS HORIZONS

Post FD-1  
11-13-98  
APL & Loc

PAY ZONE WILL BE SELECTIVELY PERFORATED AND STIMULATED  
AS NEEDED FOR OPTIMUM PRODUCTION.

ATTACHED ARE: 1. LOCATION & ACREAGE DEDICATION PLAT  
2. SUPPLEMENTAL DRILLING DATA  
3. SURFACE USE PLAN

MASTER SURFACE USE PLAN ON FILE AT BLM ROSWELL



IN ABOVE SPACE DESCRIBE PROPOSED PROGRAM: If proposal is to deepen or plug back, give data on present productive zone and proposed new productive zone. If proposal is to drill or deepen directionally, give pertinent data on subsurface locations and measured and true vertical depths. Give blowout preventer program, if any.

SIGNED Phonda Nelson TITLE Production Clerk

DATE 10/5/98

(This space for Federal or State office use)

PERMIT NO.

APPROVAL DATE  
Assistant Field Office Manager,  
Lands and Minerals

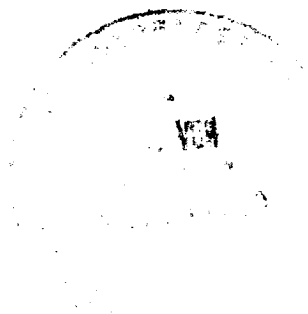
APPROVED BY (ORIG. SGD.) ARMANDO A. LOPEZ

TITLE

DATE NOV 04 1998

CONDITIONS OF APPROVAL, IF ANY:

\*See Instructions On Reverse Side



U.S. AIR MAIL  
10c

NOV 11 - 6 P 9 59

NEW YORK

DISTRICT I  
P.O. Box 1980, Hobbs, NM 88241-1980

DISTRICT II  
P.O. Drawer DD, Artesia, NM 88211-0719

DISTRICT III  
1000 Rio Brazos Rd., Aztec, NM 87410

DISTRICT IV  
P.O. BOX 2088, SANTA FE, N.M. 87504-2088

State of New Mexico  
Energy, Minerals and Natural Resources Department

SEP 10 1998

OIL CONSERVATION DIVISION  
P.O. Box 2088

Santa Fe, New Mexico 87504-2088

Form C-102  
Revised February 10, 1994  
Submit to Appropriate District Office  
State Lease - 4 Copies  
Fee Lease - 3 Copies

☐ AMENDED REPORT

WELL LOCATION AND ACREAGE DEDICATION PLAT

API Number	Pool Code	Pool Name
	28509	GRBG JACKSON SR Q GRBG SA
Property Code	Property Name	Well Number
6497	BURCH KEELY UNIT	861
OGRID No.	Operator Name	Elevation
14049	MARBOB ENERGY CORPORATION	3592

Surface Location

UL or lot No.	Section	Township	Range	Lot Idn	Feet from the	North/South line	Feet from the	East/West line	County
M	24	17 S	29 E		1295	SOUTH	660	WEST	EDDY

Bottom Hole Location If Different From Surface

UL or lot No.	Section	Township	Range	Lot Idn	Feet from the	North/South line	Feet from the	East/West line	County
Dedicated Acres	Joint or Infill	Consolidation Code	Order No.						
40									

NO ALLOWABLE WILL BE ASSIGNED TO THIS COMPLETION UNTIL ALL INTERESTS HAVE BEEN CONSOLIDATED  
OR A NON-STANDARD UNIT HAS BEEN APPROVED BY THE DIVISION

	<b>OPERATOR CERTIFICATION</b>  <i>I hereby certify the the information contained herein is true and complete to the best of my knowledge and belief.</i>   Signature RHONDA NELSON Printed Name PRODUCTION ANALYST Title 10/5/98 Date	
	<b>SURVEYOR CERTIFICATION</b>  <i>I hereby certify that the well location shown on this plat was plotted from field notes of actual surveys made by me or under my supervision, and that the same is true and correct to the best of my belief.</i>  SEPTEMBER 3, 1998 Date Surveyed Signature & Seal of Professional Surveyor  Certified by RONALD J. EIDSON 3239 EIDSON 12641 McDONALD 12185	



# BLOW OUT PREVENTER AND CHOKE MANIFOLD

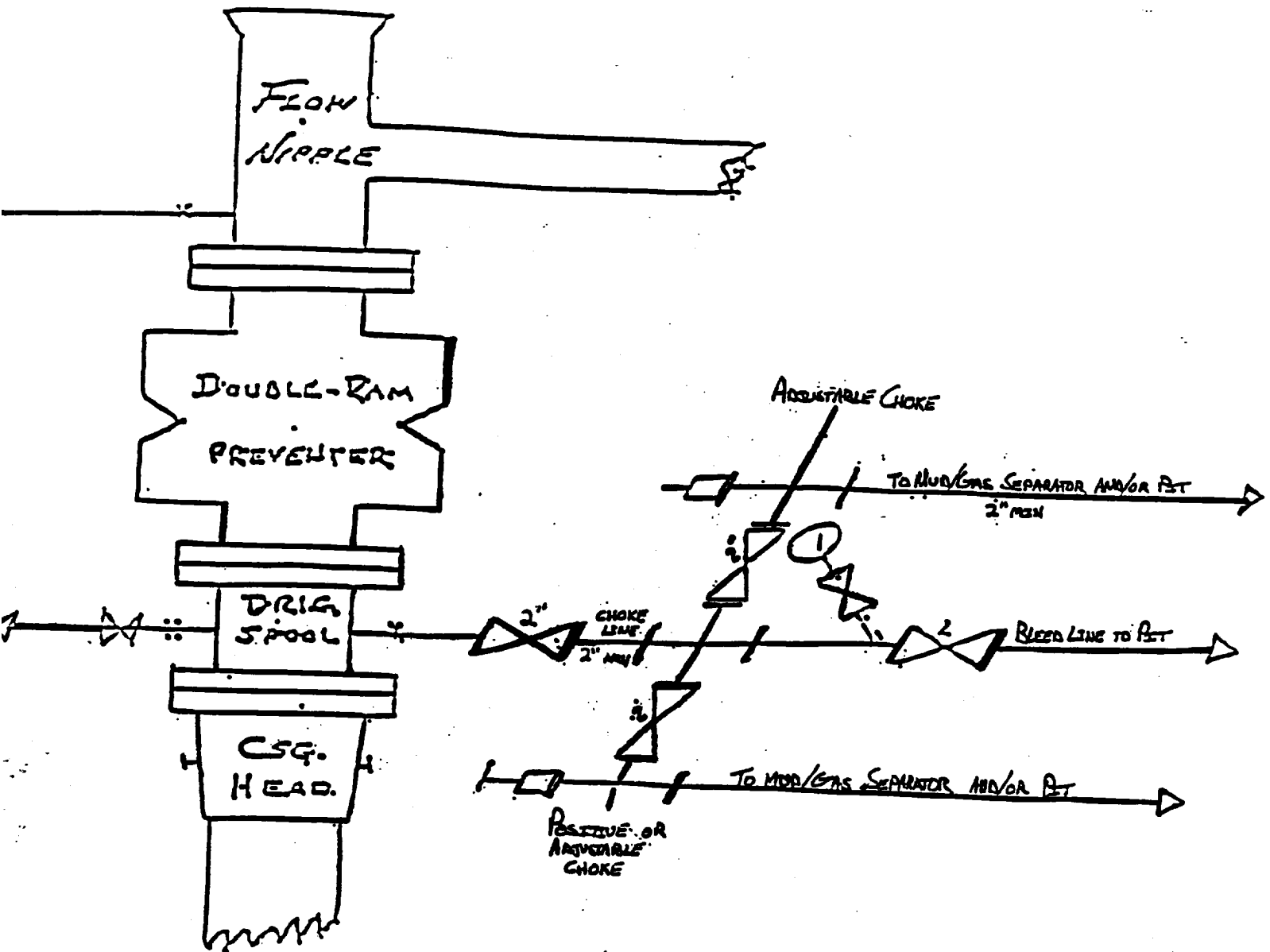


Exhibit # 1

*10"/900 Cameron SS Space Saver  
3000# Working Pressure  
3000# Working Pressure Choke Manifold*

Burch Keely Unit # 861  
1295' FSL & 660' FWL  
Sec. 24; T17S -- R29E  
Eddy County, New Mexico

