

DISTRICT I
P. O. Box 1980, Hobbs, NM 88240

DISTRICT II
P. O. Drawer DD, Artesia, NM 88210

DISTRICT III
1000 Rio Brazos Rd., Aztec, NM 87410

DISTRICT IV
P. O. Box 2088, Santa Fe, NM 87504-2088

State of New Mexico
Energy, Minerals and Natural Resources Department

OIL CONSERVATION DIVISION
PO Box 2088
Santa Fe, NM 87504-2088

Form C-102
Revised February 10, 1994

Instructions on back

Submit to Appropriate District Office

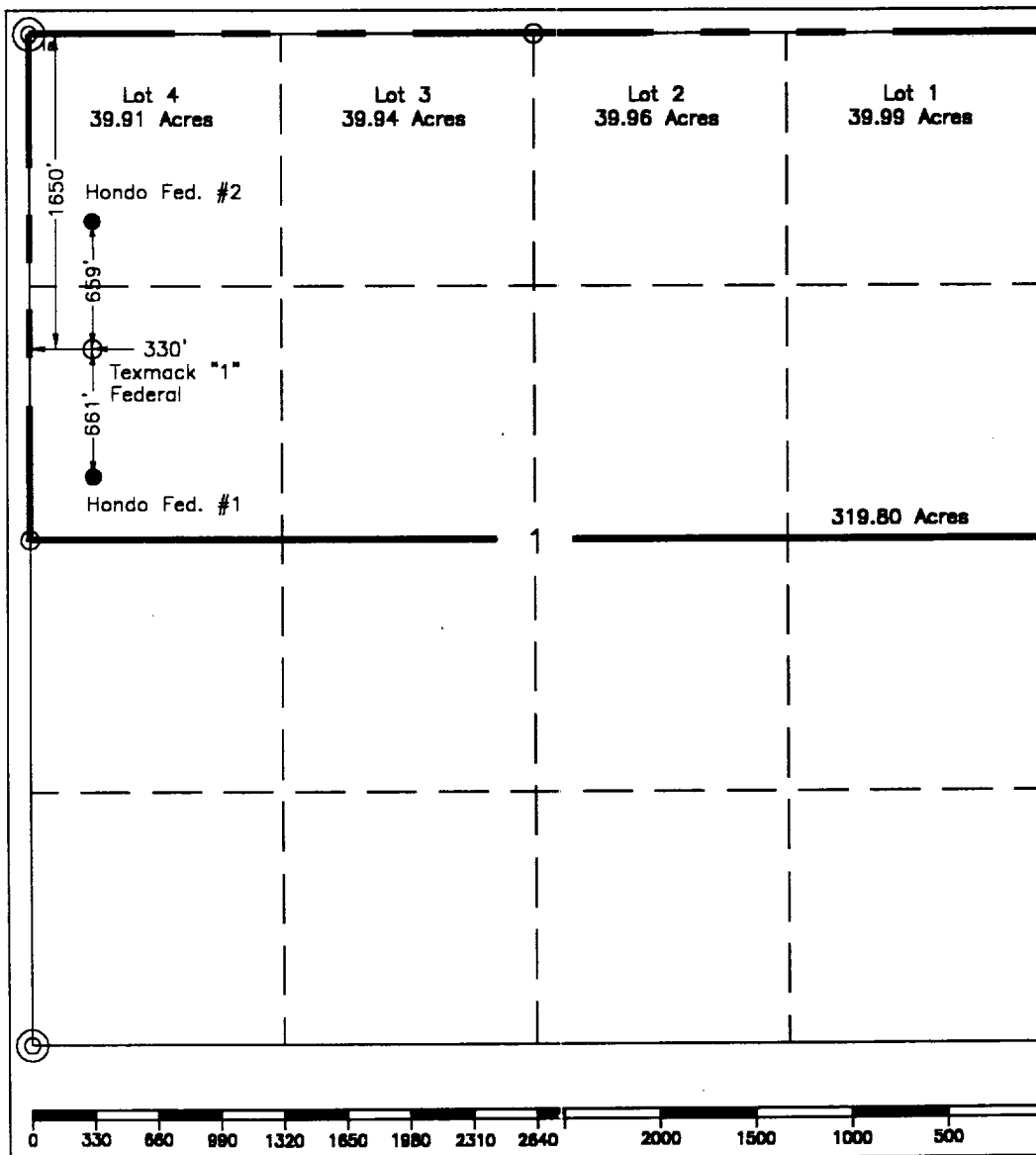
State Lease-4 copies
Fee Lease-3 copies

☐ AMENDED REPORT

WELL LOCATION AND ACREAGE DEDICATION PLAT

¹ API Number		² Pool Code		³ Pool Name Fren, Morrow; Undesignated, Atoka, Strawn					
⁴ Property Code		⁵ Property Name Texmack "1" Federal Com.						⁶ Well Number 1	
⁷ OGRID No. 22351		⁸ Operator Name TEXACO EXPLORATION & PRODUCTION, INC.						⁹ Elevation 4024'	
¹⁰ Surface Location									
UL or lot no. E	Section 1	Township 17-S	Range 31-E	Lot ldr	Feet from the 1650'	North/South line North	Feet from the 330'	East/West line West	County Eddy
¹¹ Bottom Hole Location if Different From Surface									
UL or lot no.	Section	Township	Range	Lot ldr	Feet from the	North/South line	Feet from the	East/West line	County
¹² Dedicated Acres 319.80		¹³ Joint or Infill		¹⁴ Consolidation Code		¹⁵ Order No.			

NO ALLOWABLE WILL BE ASSIGNED TO THIS COMPLETION UNTIL ALL INTERESTS HAVE BEEN CONSOLIDATED
OR A NON-STANDARD UNIT HAS BEEN APPROVED BY THE DIVISION.



¹⁶ OPERATOR CERTIFICATION	
I hereby certify that the information contained herein is true and complete to the best of my knowledge and belief.	
Signature	<i>A. Phil Ryan</i>
Printed Name	A. Phil Ryan
Position	Commission Coordinator
Company	Texaco Expl. & Prod. Inc.
Date	November 18, 1998
¹⁷ SURVEYOR CERTIFICATION	
I hereby certify that the well location shown on this plat was plotted from field notes of actual surveys made by me or under my supervision, and that the same is true and correct to the best of my knowledge and belief.	
Date Surveyed	November 12, 1998
Signature & Seal of Professional Surveyor	<i>John S. Piper</i>
Certificate No.	7254 John S. Piper
Sheet	

○ = Staked Location ● = Producing Well ■ = Injection Well ⊙ = Water Supply Well ⊛ = Plugged & Abandon Well
⊙ = Found Section Corner, 2 or 3" Iron Pipe & GLO B.C. ○ = Found 1/4 Section Corner, 1" Iron Pipe & GLO B.C.

ADDITIONAL INFORMATION ON THE LOCATION

State Plane Coordinates			
Northing	679298.572 (1927 NAD= 679,234.24)	Easting	695680.493 (1927 NAD= 654,502.10)
Latitude	32°51'59.053"	Longitude	103°49'50.347"
Zone	North American Datum	Combined Grid Factor	Coordinate File
East	1983	0.9997675	Skelly.cr5
Drawing File	Field Book		
Tex1_Fed.Dwg	Lea County Field Book 6, Pg. 62		