

District I
PO Box 1980, Hobbs, NM 88241-1980
District II
811 S. 1st Street Artesia, NM 88210-1404
District III
1000 Rio Brazos Rd, Aztec, NM 87410
District IV
PO Box 2088, Santa Fe, NM 87504-2088

State of New Mexico
Energy, Minerals & Natural Resources Department
OIL CONSERVATION DIVISION
PO Box 2088
Santa Fe, NM 87504-2088

Form C-101
Revised February 10, 1994
Instructions on back
Submit to Appropriate District Office
State Lease - 6 Copies
Fee Lease - 5 Copies

☐ AMENDED REPORT

APPLICATION FOR PERMIT TO DRILL, RE-ENTER, DEEPEN, PLUG BACK, OR ADD A ZONE

Operator Name and Address Mack Energy Corporation P.O. Box 960 Artesia, NM 88211-0960		OGRID Number 013837 API Number 38-015-30517
Property Code 018142	Property Name Continental B State	Well No. 4

Surface Location

UL or lot no.	Section	Township	Range	Lot Idn	Feet from the	North/South line	Feet from the	East/West line	County
N	30	17S	29E		990	South	1420	West	Eddy

Proposed Bottom Hole Location If Different From Surface

UL or lot No.	Section	Township	Range	Lot Idn	Feet from the	North/South line	Feet from the	East/West line	County
Proposed Pool 1 Empire; Yeso 96210					Proposed Pool 2				

Work Type Code N	Well Type Code O	Cable/Rotary R	Lease Type Code S	Ground Level Elevation 3651
Multiple	Proposed Depth	Formation	Contractor	Spud Date
No	5500'	Paddock	LaRue	11/20/98

Proposed Casing and Cement Program

Hole Size	Casing Size	Casing weight/foot	Setting Depth	Sacks of Cement	Estimated TOC
17 1/2	13 3/8	54.5	125'	Circ	
12 1/4	8 5/8	24	800'	Circ	
7 7/8	5 1/2	17	5500'	Sufficient to Circ	

Describe the proposed program. If this application is to DEEPEN or PLUG BACK give the data on the present productive zone and proposed new productive zone. Describe the blowout prevention program, if any. Use additional sheets if necessary.

Mack Energy Corporation proposes to drill to 125', run 13 3/8" casing and cement. Drill to 800', run 8 5/8" casing and cement. Drill to 5500' and test Paddock Zone, run 5 1/2" casing and cement. Put well on production.

Note: On Production string, a fluid caliber will be run, will figure cement, with 25% excess, attempt to circulate.

Post TD-1
12-4-98
API & loc

I hereby certify that the information given above is true and complete to the best of my knowledge and belief Signature <i>Crissa D. Carter</i>		OIL CONSERVATION DIVISION	
Printed name: Crissa D. Carter		Approval by: ORIGINAL SIGNED BY TIM W. GUM DISTRICT II SUPERVISOR	
Title: Production Clerk		Title: <i>1304</i>	
Date: 10/16/98		Approval Date: 12-1-98 Expiration Date: 12-1-99	
Phone: (505)748-1288		Conditions of Approval: Attached <input type="checkbox"/>	

DISTRICT I
P.O. Box 1980, Hobbs, NM 88241-1980

State of New Mexico
Energy, Minerals and Natural Resources Department

Form C-102
Revised February 10, 1994
Submit to Appropriate District Office
State Lease - 4 Copies
Fee Lease - 3 Copies

DISTRICT II
P.O. Drawer DD, Artesia, NM 88211-0719

DISTRICT III
1000 Rio Brazos Rd., Aztec, NM 87410

DISTRICT IV
P.O. BOX 2088, SANTA FE, N.M. 87504-2088

OIL CONSERVATION DIVISION

P.O. Box 2088
Santa Fe, New Mexico 87504-2088

☐ AMENDED REPORT

WELL LOCATION AND ACREAGE DEDICATION PLAT

API Number	Pool Code 96210	Pool Name Empire Yeso
Property Code 018142	Property Name CONTINENTAL STATE B	Well Number 24
OGRID No. 013837	Operator Name MACK ENERGY CORPORATION	Elevation 3651'

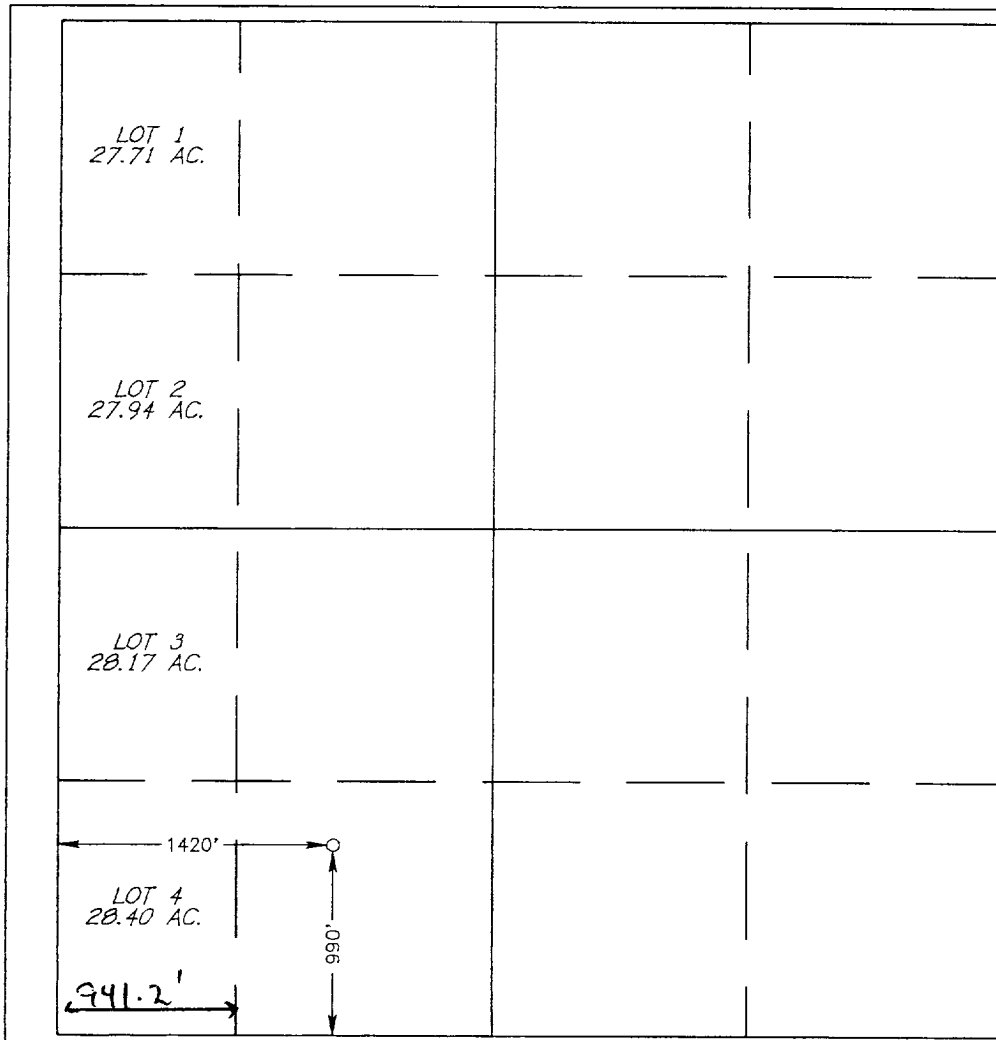
Surface Location

UL or lot No. N	Section 30	Township 17 S	Range 29 E	Lot Idn	Feet from the 990	North/South line SOUTH	Feet from the 1420	East/West line WEST	County EDDY
--------------------	---------------	------------------	---------------	---------	----------------------	---------------------------	-----------------------	------------------------	----------------

Bottom Hole Location If Different From Surface

UL or lot No.	Section	Township	Range	Lot Idn	Feet from the	North/South line	Feet from the	East/West line	County
Dedicated Acres 40	Joint or Infill	Consolidation Code	Order No.						

NO ALLOWABLE WILL BE ASSIGNED TO THIS COMPLETION UNTIL ALL INTERESTS HAVE BEEN CONSOLIDATED
OR A NON-STANDARD UNIT HAS BEEN APPROVED BY THE DIVISION



OPERATOR CERTIFICATION

I hereby certify the information contained herein is true and complete to the best of my knowledge and belief.

Crissa D. Carter

Signature

Crissa D. Carter

Printed Name

Production Clerk

Title

10/16/98

Date

SURVEYOR CERTIFICATION

I hereby certify that the well location shown on this plat was plotted from field notes of actual surveys made by me or under my supervision and that the same is true and correct to the best of my belief.

OCTOBER 2, 1998

Date Surveyed

CDG

Signature & Seal of
Professional Surveyor

Ronald D. Eidson 10-07-98
08-11-1362

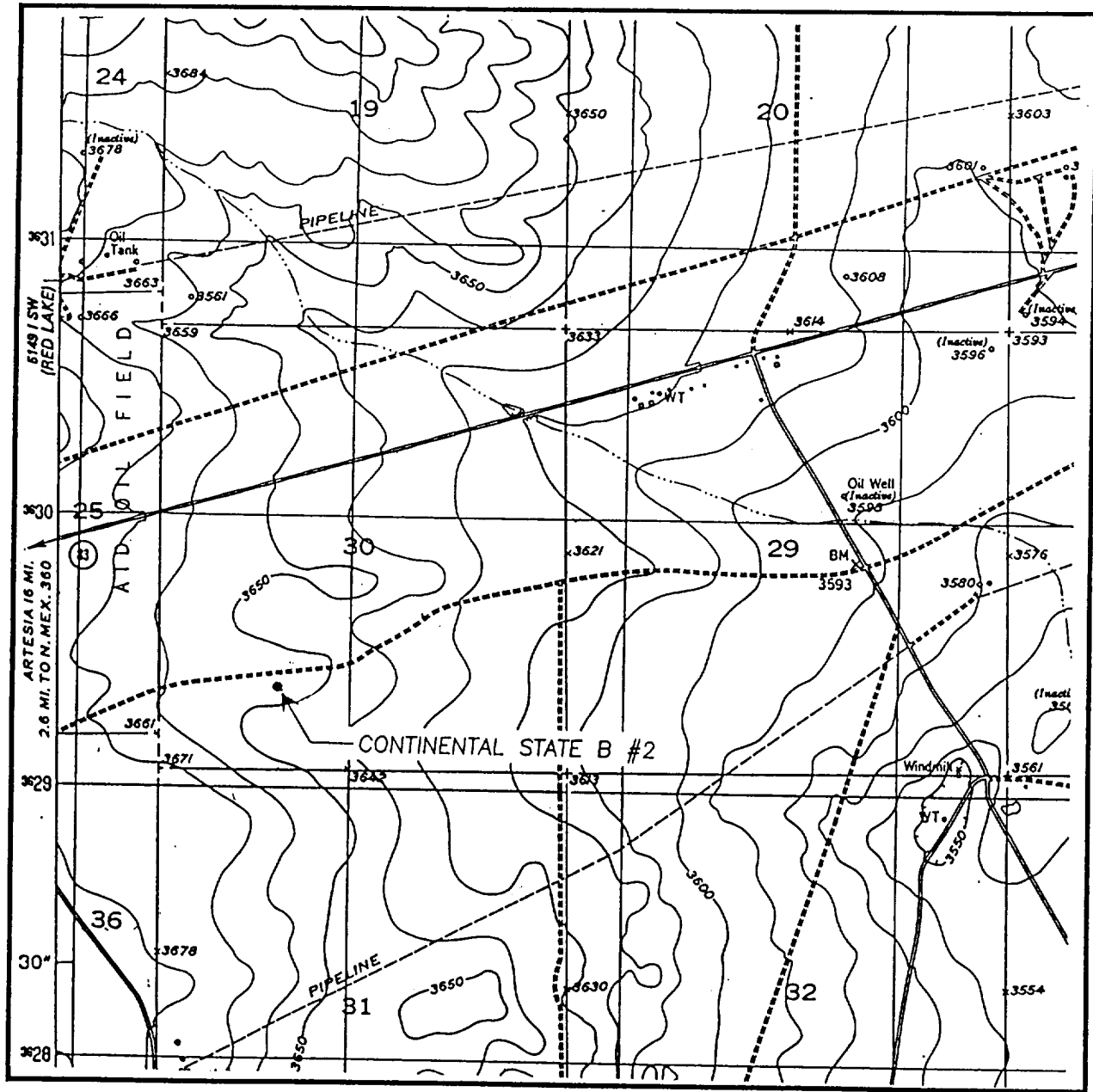
Certificate No. RONALD D. EIDSON 3239
GARY EIDSON 12641

The map displays a grid-based land area, likely a survey or administrative boundary. The grid is divided into sections numbered 1 through 24. The title 'CONTINENTAL STATE B #2' is prominently displayed in the center. To the right, the 'Loco Hills' are indicated. The map also shows various roads, including a main road labeled 'FAP 28' and another labeled 'FAP 30'. Other labels include 'FIELD', 'CROW', 'E', 'G', 'H', 'I', 'J', 'K', 'L', 'M', 'N', 'O', 'P', 'Q', 'R', 'S', 'T', 'U', 'V', 'W', 'X', 'Y', 'Z', 'AA', 'AB', 'AC', 'AD', 'AE', 'AF', 'AG', 'AH', 'AI', 'AJ', 'AK', 'AL', 'AM', 'AN', 'AO', 'AP', 'AQ', 'AR', 'AS', 'AT', 'AU', 'AV', 'AW', 'AX', 'AY', 'AZ', 'BA', 'BB', 'BC', 'BD', 'BE', 'BF', 'BG', 'BH', 'BI', 'BJ', 'BK', 'BL', 'BM', 'BN', 'BO', 'BP', 'BQ', 'BR', 'BS', 'BT', 'BU', 'BV', 'BW', 'BX', 'BY', 'BZ', 'CA', 'CB', 'CC', 'CD', 'CE', 'CF', 'CG', 'CH', 'CI', 'CJ', 'CK', 'CL', 'CM', 'CN', 'CO', 'CP', 'CQ', 'CR', 'CS', 'CT', 'CU', 'CV', 'CW', 'CX', 'CY', 'CZ', 'DA', 'DB', 'DC', 'DD', 'DE', 'DF', 'DG', 'DH', 'DI', 'DJ', 'DK', 'DL', 'DM', 'DN', 'DO', 'DP', 'DQ', 'DR', 'DS', 'DT', 'DU', 'DV', 'DW', 'DX', 'DY', 'DZ', 'EA', 'EB', 'EC', 'ED', 'EE', 'EF', 'EG', 'EH', 'EI', 'EJ', 'EK', 'EL', 'EM', 'EN', 'EO', 'EP', 'EQ', 'ER', 'ES', 'ET', 'EU', 'EV', 'EW', 'EX', 'EY', 'EZ', 'FA', 'FB', 'FC', 'FD', 'FE', 'FF', 'FG', 'FH', 'FI', 'FJ', 'FK', 'FL', 'FM', 'FN', 'FO', 'FP', 'FQ', 'FR', 'FS', 'FT', 'FU', 'FV', 'FW', 'FX', 'FY', 'FZ', 'GA', 'GB', 'GC', 'GD', 'GE', 'GF', 'GG', 'GH', 'GI', 'GJ', 'GK', 'GL', 'GM', 'GN', 'GO', 'GP', 'GQ', 'GR', 'GS', 'GT', 'GU', 'GV', 'GW', 'GX', 'GY', 'GZ', 'HA', 'HB', 'HC', 'HD', 'HE', 'HF', 'HG', 'HH', 'HI', 'HJ', 'HK', 'HL', 'HM', 'HN', 'HO', 'HP', 'HQ', 'HR', 'HS', 'HT', 'HU', 'HV', 'HW', 'HX', 'HY', 'HZ', 'IA', 'IB', 'IC', 'ID', 'IE', 'IF', 'IG', 'IH', 'II', 'IJ', 'IK', 'IL', 'IM', 'IN', 'IO', 'IP', 'IQ', 'IR', 'IS', 'IT', 'IU', 'IV', 'IW', 'IX', 'IY', 'IZ', 'JA', 'JB', 'JC', 'JD', 'JE', 'JF', 'JG', 'JH', 'JI', 'JJ', 'JK', 'JL', 'JM', 'JN', 'JO', 'JP', 'JQ', 'JR', 'JS', 'JT', 'JU', 'JV', 'JW', 'JX', 'JY', 'JZ', 'KA', 'KB', 'KC', 'KD', 'KE', 'KF', 'KG', 'KH', 'KI', 'KJ', 'KK', 'KL', 'KM', 'KN', 'KO', 'KP', 'KQ', 'KR', 'KS', 'KT', 'KU', 'KV', 'KW', 'KX', 'KY', 'KZ', 'LA', 'LB', 'LC', 'LD', 'LE', 'LF', 'LG', 'LH', 'LI', 'LJ', 'LK', 'LL', 'LM', 'LN', 'LO', 'LP', 'LQ', 'LR', 'LS', 'LT', 'LU', 'LV', 'LW', 'LX', 'LY', 'LZ', 'MA', 'MB', 'MC', 'MD', 'ME', 'MF', 'MG', 'MH', 'MI', 'MJ', 'MK', 'ML', 'MM', 'MN', 'MO', 'MP', 'MQ', 'MR', 'MS', 'MT', 'MU', 'MV', 'MW', 'MX', 'MY', 'MZ', 'NA', 'NB', 'NC', 'ND', 'NE', 'NF', 'NG', 'NH', 'NI', 'NJ', 'NK', 'NL', 'NM', 'NN', 'NO', 'NP', 'NQ', 'NR', 'NS', 'NT', 'NU', 'NV', 'NW', 'NX', 'NY', 'NZ', 'OA', 'OB', 'OC', 'OD', 'OE', 'OF', 'OG', 'OH', 'OI', 'OJ', 'OK', 'OL', 'OM', 'ON', 'OO', 'OP', 'OQ', 'OR', 'OS', 'OT', 'OU', 'OV', 'OW', 'OX', 'OY', 'OZ', 'PA', 'PB', 'PC', 'PD', 'PE', 'PF', 'PG', 'PH', 'PI', 'PJ', 'PK', 'PL', 'PM', 'PN', 'PO', 'PP', 'PQ', 'PR', 'PS', 'PT', 'PU', 'PV', 'PW', 'PX', 'PY', 'PZ', 'QA', 'QB', 'QC', 'QD', 'QE', 'QF', 'QG', 'QH', 'QI', 'QJ', 'QK', 'QL', 'QM', 'QN', 'QO', 'QP', 'QQ', 'QR', 'QS', 'QT', 'QU', 'QV', 'QW', 'QX', 'QY', 'QZ', 'RA', 'RB', 'RC', 'RD', 'RE', 'RF', 'RG', 'RH', 'RI', 'RJ', 'RK', 'RL', 'RM', 'RN', 'RO', 'RP', 'RQ', 'RR', 'RS', 'RT', 'RU', 'RV', 'RW', 'RX', 'RY', 'RZ', 'SA', 'SB', 'SC', 'SD', 'SE', 'SF', 'SG', 'SH', 'SI', 'SJ', 'SK', 'SL', 'SM', 'SN', 'SO', 'SP', 'SQ', 'SR', 'SS', 'ST', 'SU', 'SV', 'SW', 'SX', 'SY', 'SZ', 'TA', 'TB', 'TC', 'TD', 'TE', 'TF', 'TG', 'TH', 'TI', 'TJ', 'TK', 'TL', 'TM', 'TN', 'TO', 'TP', 'TQ', 'TR', 'TS', 'TT', 'TU', 'TV', 'TW', 'TX', 'TY', 'TZ', 'UA', 'UB', 'UC', 'UD', 'UE', 'UF', 'UG', 'UH', 'UI', 'UJ', 'UK', 'UL', 'UM', 'UN', 'UO', 'UP', 'UQ', 'UR', 'US', 'UT', 'UU', 'UV', 'UW', 'UX', 'UY', 'UZ', 'VA', 'VB', 'VC', 'VD', 'VE', 'VF', 'VG', 'VH', 'VI', 'VJ', 'VK', 'VL', 'VM', 'VN', 'VO', 'VP', 'VQ', 'VR', 'VS', 'VT', 'VU', 'VV', 'VW', 'VX', 'VY', 'VZ', 'WA', 'WB', 'WC', 'WD', 'WE', 'WF', 'WG', 'WH', 'WI', 'WJ', 'WK', 'WL', 'WM', 'WN', 'WO', 'WP', 'WQ', 'WR', 'WS', 'WT', 'WU', 'WV', 'WW', 'WX', 'WY', 'WZ', 'XA', 'XB', 'XC', 'XD', 'XE', 'XF', 'XG', 'XH', 'XI', 'XJ', 'XK', 'XL', 'XM', 'XN', 'XO', 'XP', 'XQ', 'XR', 'XS', 'XT', 'XU', 'XV', 'XW', 'XX', 'XY', 'XZ', 'YA', 'YB', 'YC', 'YD', 'YE', 'YF', 'YG', 'YH', 'YI', 'YJ', 'YK', 'YL', 'YM', 'YN', 'YO', 'YP', 'YQ', 'YR', 'YS', 'YT', 'YU', 'YV', 'YW', 'YX', 'YY', 'YZ', 'ZA', 'ZB', 'ZC', 'ZD', 'ZE', 'ZF', 'ZG', 'ZH', 'ZI', 'ZJ', 'ZK', 'ZL', 'ZM', 'ZN', 'ZO', 'ZP', 'ZQ', 'ZR', 'ZS', 'ZT', 'ZU', 'ZV', 'ZW', 'ZX', 'ZY', 'ZZ'. The map also includes a scale bar and a north arrow.

LEASE_____CONTINENTAL STATE B

(505) 393-3117

LOCATION VERIFICATION MAP



SCALE: 1" = 2000'

CONTOUR INTERVAL - 10'

SEC. 30 TWP. 17-S RGE. 29-E

SURVEY N.M.P.M.

COUNTY EDDY

DESCRIPTION 990' FSL & 1420' FWL

ELEVATION 3651'

OPERATOR MACK ENERGY CORPORATION

LEASE CONTINENTAL STATE B

U.S.G.S. TOPOGRAPHIC MAP

RED LAKE SE, NM

JOHN WEST ENGINEERING
HOBBS, NEW MEXICO
(505) 393-3117