

District I  
PO Box 1980, Hobbs, NM 88241-1980  
District II  
811 S. 1st Street Artesia, NM 88210-1404  
District III  
1000 Rio Brazos Rd, Aztec, NM 87410  
District IV  
PO Box 2088, Santa Fe, NM 87504-2088

State of New Mexico  
Energy, Minerals & Natural Resources Department  
**OIL CONSERVATION DIVISION**  
PO Box 2088  
Santa Fe, NM 87504-2088

Form C-101  
Revised February 10, 1994  
Instructions on back  
Submit to Appropriate District Office  
State Lease - 6 Copies  
Fee Lease - 5 Copies

☐ AMENDED REPORT

**APPLICATION FOR PERMIT TO DRILL, RE-ENTER, DEEPEN, PLUGBACK, OR ADD A ZONE**

Operator Name and Address Mack Energy Corporation P.O. Box 960 Artesia, NM 88211-0960		OGRID Number 013837 API Number 30-018-30816
Property Code 018142	Property Name Continental B State	Well No. 6

**Surface Location**

UL or lot no.	Section	Township	Range	Lot Idn	Feet from the	North/South line	Feet from the	East/West line	County
M	30	17S	29E		660	South	607	West	Eddy

**Proposed Bottom Hole Location If Different From Surface**

UL or lot No.	Section	Township	Range	Lot Idn	Feet from the	North/South line	Feet from the	East/West line	County
Proposed Pool 1 Empire; Yeso 96210					Proposed Pool 2				

Work Type Code N Multiple No	Well Type Code O Proposed Depth 5500'	Cable/Rotary R Formation Paddock	Lease Type Code S Contractor LaRue	Ground Level Elevation 3652 Spud Date 12/20/98
---------------------------------------	--	---	---	---

**Proposed Casing and Cement Program**

Hole Size	Casing Size	Casing weight/foot	Setting Depth	Sacks of Cement	Estimated TOC
17 1/2	13 3/8	54.5	125'	Circ	
12 1/4	8 5/8	24	800'	Circ	
7 7/8	5 1/2	17	5500'	Sufficient to Circ	

Describe the proposed program. If this application is to DEEPEN or PLUG BACK give the data on the present productive zone and proposed new productive zone. Describe the blowout prevention program, if any. Use additional sheets if necessary.

Mack Energy Corporation proposes to drill to 125', run 13 3/8" casing and cement. Drill to 800', run 8 5/8" casing and cement. Drill to 5500' and test Paddock Zone, run 5 1/2" casing and cement. Put well on production.

Note: On Production string, a fluid caliber will be run, will figure cement, with 25% excess, attempt to circulate.

I hereby certify that the information given above is true and complete to the best of my knowledge and belief. Signature <i>Crissa D. Carter</i>		<b>OIL CONSERVATION DIVISION</b>	
Printed name: Crissa D. Carter		Approval by: <b>ORIGINAL SIGNED BY TIM W. GUL</b> <b>DISTRICT II SUPERVISOR</b>	
Title: Production Clerk		Title:	
Date: 10/16/98		Approval Date: 12-1-98	Expiration Date: 12-1-99
Phone: (505)748-1288		Conditions of Approval: Attached <input type="checkbox"/>	

## DISTRICT I

P.O. Box 1980, Hobbs, NM 88241-1980

## DISTRICT II

P.O. Drawer DD, Artesia, NM 88211-0719

## DISTRICT III

1000 Rio Brazos Rd., Aztec, NM 87410

## DISTRICT IV

P.O. Box 2088, Santa Fe, NM 87504-2088

## State of New Mexico

Energy, Minerals and Natural Resources Department

Form C-102

Revised February 10, 1994

Submit to Appropriate District Office

State Lease - 4 Copies

Fee Lease - 3 Copies

## OIL CONSERVATION DIVISION

P.O. Box 2088

Santa Fe, New Mexico 87504-2088

☐ AMENDED REPORT

## WELL LOCATION AND ACREAGE DEDICATION PLAT

API Number	Pool Code	Pool Name
	96210	Empire; Yeso
Property Code	Property Name	Well Number
018142	CONTINENTAL "B" State	X 6
OGRID No.	Operator Name	Elevation
013837	MACK ENERGY CORPORATION	3653


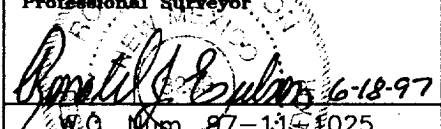
## Surface Location

UL or lot No.	Section	Township	Range	Lot Idn	Feet from the	North/South line	Feet from the	East/West line	County
M	30	17 S	29 E		660	SOUTH	607	WEST	EDDY

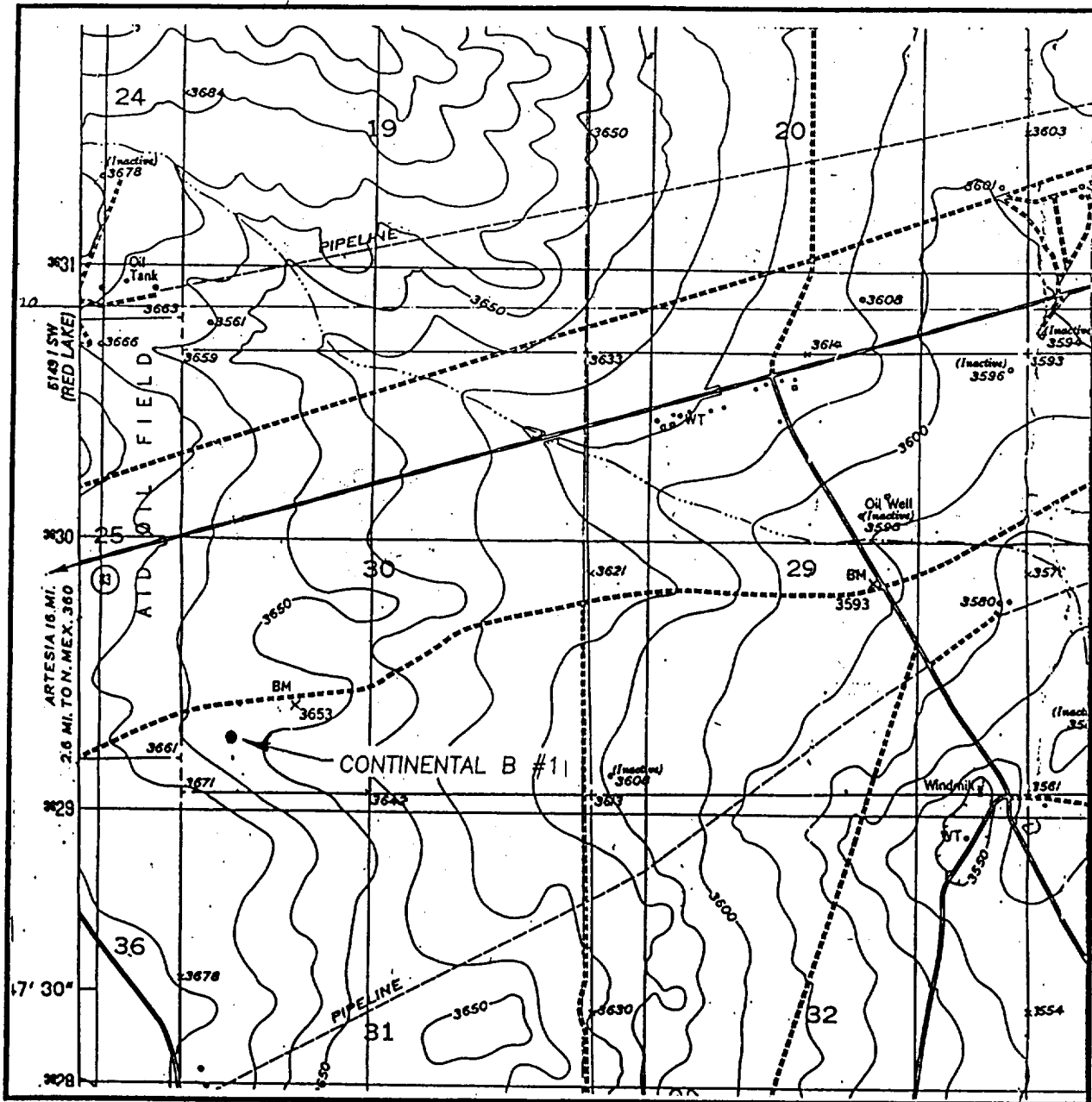
## Bottom Hole Location If Different From Surface

UL or lot No.	Section	Township	Range	Lot Idn	Feet from the	North/South line	Feet from the	East/West line	County
Dedicated Acres		Joint or Infill		Consolidation Code		Order No.			
68.4									

NO ALLOWABLE WILL BE ASSIGNED TO THIS COMPLETION UNTIL ALL INTERESTS HAVE BEEN CONSOLIDATED  
OR A NON-STANDARD UNIT HAS BEEN APPROVED BY THE DIVISION

911.9'				<b>OPERATOR CERTIFICATION</b>  I hereby certify the the information contained herein is true and complete to the best of my knowledge and belief.   Signature Crissa D. Carter Printed Name Production Clerk Title 10/16/98 Date
LOT 1 27.71 AC.				
LOT 2 27.94 AC.				
LOT 3 28.17 AC.				
LOT 4 28.40 AC.				<b>SURVEYOR CERTIFICATION</b>  I hereby certify that the well location shown on this plat was plotted from field notes of actual surveys made by me or under my supervision, and that the same is true and correct to the best of my belief.  JUNE 17, 1997 Date Surveyed JLP Signature & Seal of Professional Surveyor  W.O. No. 87-1141025 Certificate No. JOHN W. WEST, 676 RONALD EIDSON, 3239 GARY G. EIDSON, 12641
607' → ○ 660' 941.2'				

# LOCATION VERIFICATION MAP



SCALE: 1" = 2000'

CONTOUR INTERVAL  
RED LAKE SE - 10'

SEC. 30 TWP. 17-S RGE. 29-E

SURVEY N.M.P.M.

COUNTY EDDY

DESCRIPTION 660' FSL & 603' FWL

ELEVATION 3653

OPERATOR MAC K ENERGY CORPORATION

LEASE CONTINENTAL B

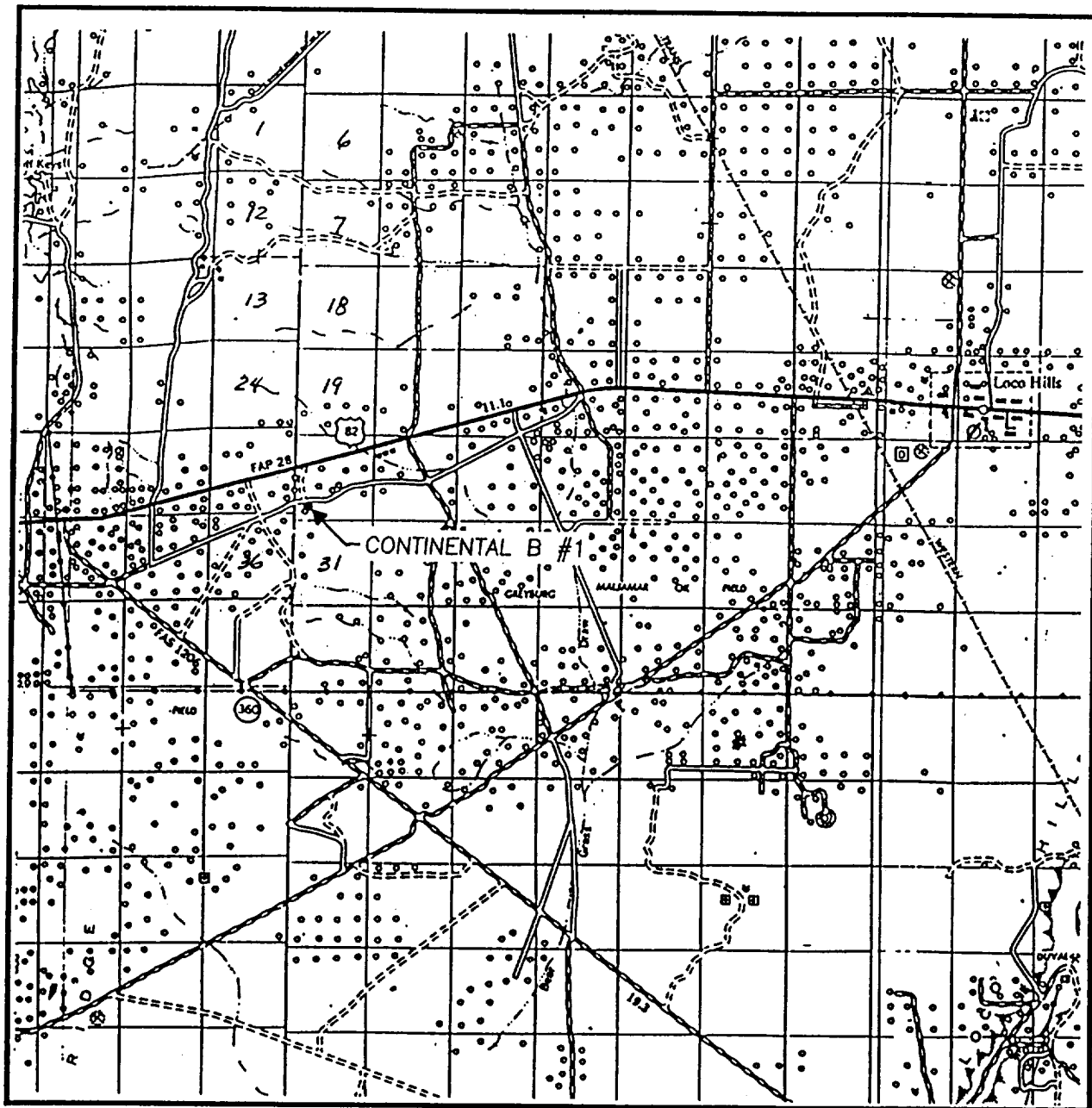
U.S.G.S. TOPOGRAPHIC MAP

RED LAKE SE, NM

**JOHN WEST ENGINEERING  
HOBBS, NEW MEXICO**

**(505) 393-3117**

# VICINITY MAP



SCALE: 1" = 2 MILES

SEC. 30 TWP. 17-S RGE. 29-E

SURVEY N.M.P.M.

COUNTY EDDY

DESCRIPTION 660' FSL & 607' FWL

ELEVATION 365.3

OPERATOR MACK ENERGY CORPORATION

LEASE CONTINENTAL B

**JOHN WEST ENGINEERING**  
**HOBBS, NEW MEXICO**  
**(505) 393-3117**