

UNITED STATES  
DEPARTMENT OF THE INTERIOR  
BUREAU OF LAND MANAGEMENT

CONTACT RECEIVING  
OFFICE 10000  
OF COPIES ACQUIRED  
(Other instructions on  
reverse side)

30-015-30537

HM Roswell District  
Modified Form No.  
NM60-3160-2

APPLICATION FOR PERMIT TO DRILL, DEEPEN, OR PLUG BACK

1a. TYPE OF WORK  
DRILL ☒ DEEPEN ☐ PLUG BACK ☐  
b. TYPE OF WELL  
OIL WELL ☒ GAS WELL ☐ OTHER ☐ SINGLE ZONE ☐ MULTIPLE ZONE ☐  
2. NAME OF OPERATOR  
Marbob Energy Corporation 14049  
3a. Area Code & Phone No.  
505-748-3303  
3. ADDRESS OF OPERATOR  
P. O. BOX 227 Artesia, NM 88210  
4. LOCATION OF WELL (Report location clearly and in accordance with any State requirements.)  
At surface  
990 FSL 430 FEL  
At proposed prod. zone  
SAME Unit P  
14. DISTANCE IN MILES AND DIRECTION FROM NEAREST TOWN OR POST OFFICE\*  
EAST OF LOCO HILLS ON HWY 82 APPROX 2.9 MILES  
15. DISTANCE FROM PROPOSED\*  
LOCATION TO NEAREST  
PROPERTY OR LEASE LINE, FT.  
(Also to nearest drig. unit line, if any) 430'  
16. NO. OF ACRES IN LEASE  
80  
17. NO. OF ACRES ASSIGNED  
TO THIS WELL  
40  
18. DISTANCE FROM PROPOSED LOCATION\*  
TO NEAREST WELL, DRILLING, COMPLETED,  
OR APPLIED FOR, ON THIS LEASE, FT.  
19. PROPOSED DEPTH  
6000'  
20. ROTARY OR CABLE TOOLS  
ROTARY  
21. ELEVATIONS (Show whether DF, RT, GR, etc.)  
3673' GR  
22. APPROX. DATE WORK WILL START\*  
12/13/98

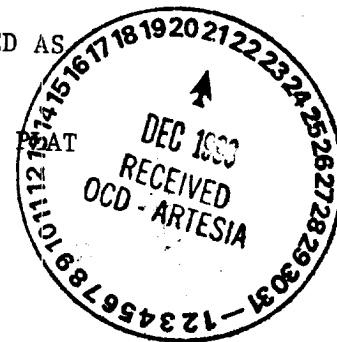
PROPOSED CASING AND CEMENTING PROGRAM

HOLE SIZE	CASING SIZE	WEIGHT/FOOT	GRADE	THREAD TYPE	SETTING DEPTH	QUANTITY OF CEMENT
12 1/4"	8 5/8"	24#	J-55	LTC	425'	300 SX, CIRC
7 7/8"	5 1/2"	17#	J-55	LTC	6000'	1400 SX, ATTEMPT TO CIRC

PAY ZONE WILL BE SELECTIVELY STIMULATED AND PERFORATED AS  
NEEDED FOR OPTIMUM PRODUCTION.

ATTACHED ARE: 1. WELL LOCATION & ACREAGE DEDICATION  
2. SURFACE USE PLAN  
3. SUPPLEMENTAL DRILLING DATA

Post ID-1  
12-31-98  
API & loc



IN ABOVE SPACE DESCRIBE PROPOSED PROGRAM: If proposal is to deepen or plug back, give data on present productive zone and proposed new productive zone. If proposal is to drill or deepen directionally, give pertinent data on subsurface locations and measured and true vertical depths. Give blowout preventer program, if any.

SIGNED Robin Cokerum

TITLE Production Clerk

DATE 11/18/98

(This space for Federal or State office use)

PERMIT NO.

Acting APPROVAL DATE

APPROVED BY (ORIG. SGD.) ARMANDO A. LOPEZ

TITLE Assistant Field Office Manager,  
Lands and Minerals

DATE 12/18/98

CONDITIONS OF APPROVAL, IF ANY:

RECEIVED

NOV 19 38

BLM  
ROSWELL, NM

DISTRICT I  
P.O. Box 1980, Hobbs, NM 88241-1980

State of New Mexico  
Energy, Minerals and Natural Resources Department

AUG 13 1998

Form C-102  
Revised February 10, 1994  
Submit to Appropriate District Office  
State Lease - 4 Copies  
Fee Lease - 3 Copies

DISTRICT II  
P.O. Drawer DD, Artesia, NM 88211-0719

DISTRICT III  
1000 Rio Brazos Rd., Aztec, NM 87410

DISTRICT IV  
P.O. Box 2088, Santa Fe, NM 87504-2088

OIL CONSERVATION DIVISION  
P.O. Box 2088

Santa Fe, New Mexico 87504-2088

☐ AMENDED REPORT

WELL LOCATION AND ACREAGE DEDICATION PLAT

API Number	Pool Code 96718	Pool Name LOCO HILLS Paddock
Property Code	Property Name BRETT FEDERAL	Well Number 2
OGRID No. 14049	Operator Name MARBOB ENERGY CORPORATION	Elevation 3673'

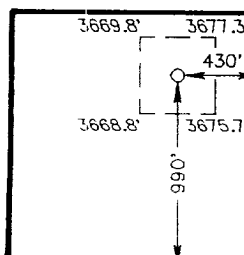

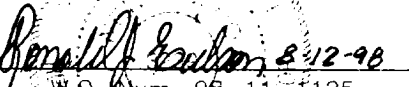
Surface Location

UL or lot No. P	Section 23	Township 17 S	Range 30 E	Lot Idn	Feet from the 990	North/South line SOUTH	Feet from the 430	East/West line EAST	County EDDY
--------------------	---------------	------------------	---------------	---------	----------------------	---------------------------	----------------------	------------------------	----------------

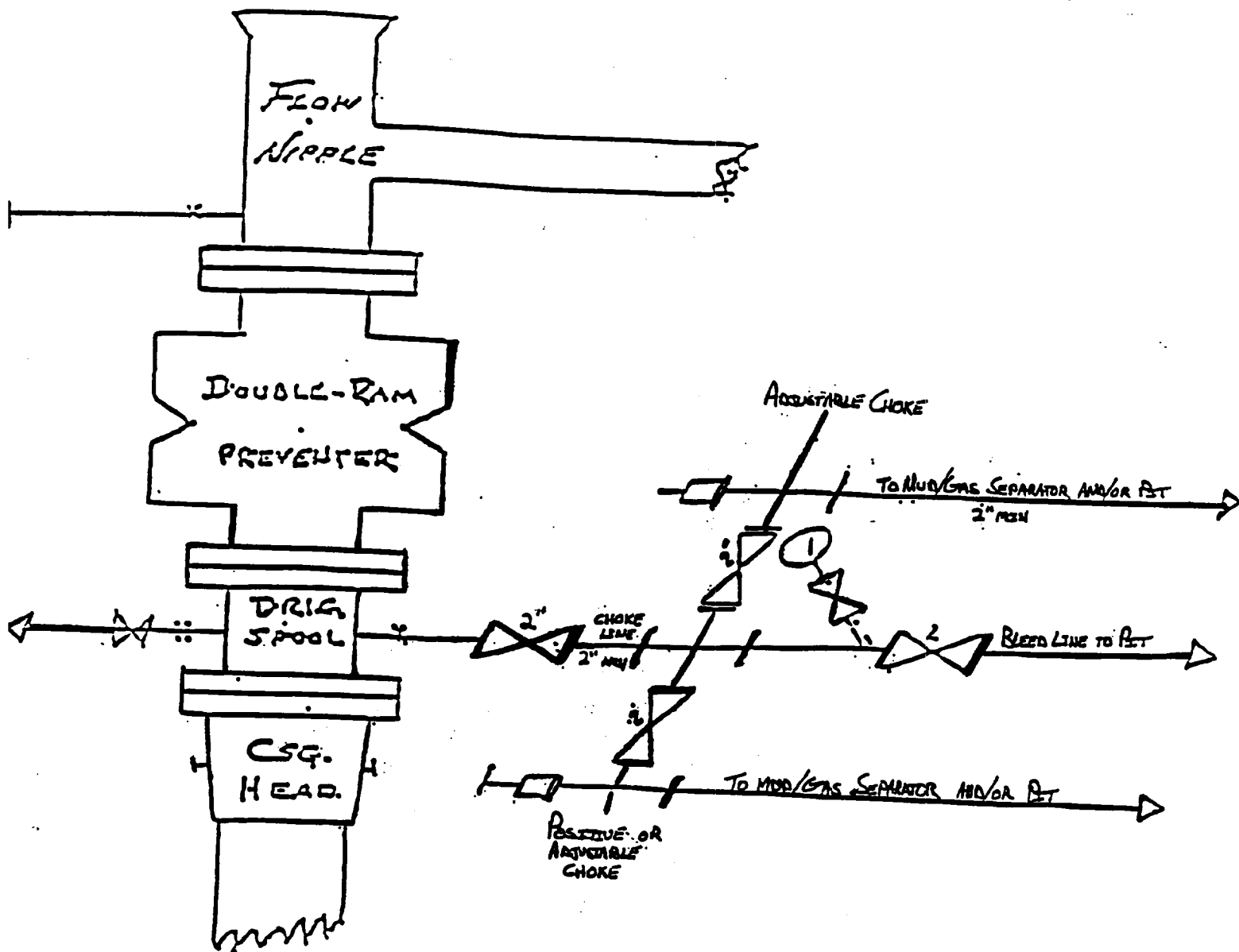
Bottom Hole Location If Different From Surface

UL or lot No.	Section	Township	Range	Lot Idn	Feet from the	North/South line	Feet from the	East/West line	County
Dedicated Acres 40	Joint or Infill	Consolidation Code	Order No.						

NO ALLOWABLE WILL BE ASSIGNED TO THIS COMPLETION UNTIL ALL INTERESTS HAVE BEEN CONSOLIDATED  
OR A NON-STANDARD UNIT HAS BEEN APPROVED BY THE DIVISION

	<b>OPERATOR CERTIFICATION</b>  I hereby certify the the information contained herein is true and complete to the best of my knowledge and belief.   Signature ROBIN COCKRUM Printed Name PRODUCTION ANALYST Title 11/18/98 Date	
	<b>SURVEYOR CERTIFICATION</b>  I hereby certify that the well location shown on this plat was plotted from field notes of actual surveys made by me or under my supervision, and that the same is true and correct to the best of my belief.  AUGUST 10, 1998 Date Surveyed CDG Signature & Seal of Professional Surveyor  W.O. Num. 98-11-1125 Certificate No. RONALD E. EDSON, 3239 GARY G. EDSON, 12641 RONALD E. EDSON, 12185	

# BLOW OUT PREVENTER AND CHOKE MANIFOLD



*10"/900 Cameron SS Space Saver  
3000# Working Pressure  
3000# Working Pressure Choke Manifold*

Brett Federal #2  
990' FSL & 430' FEL  
Section 23; T17s -- R30e  
Eddy County, New Mexico

Exhibit # 1

Attachment to Exhibit #1  
NOTES REGARDING THE BLOWOUT PREVENTERS

1. Drilling nipple to be so constructed that it can be removed without use of a welder through rotary table opening, with minimum I.D. equal to preventer bore.
2. Wear ring to be properly installed in head.
3. Blow out preventer and all fittings must be in good condition, 1000 psi W.P. minimum.
4. All fittings to be flanged.
5. Safety valve must be available on rig floor at all times with proper connections, valve to be full bore 1000 psi W.P. minimum.
6. All choke and fill lines to be securely anchored, especially ends of choke lines.
7. Equipment through which bit must pass shall be at least as large as the diameter of the casing being drilled through.
8. Kelly cock on kelly.
9. Extension wrenches and hand wheels to be properly installed.
10. Blow out preventer control to be located as close to driller's position as feasible.
11. Blow out preventer closing equipment to include minimum 40 gallon accumulator, two independent sources of pump power on each closing unit installation, and meet all API specifications.