

Box 1980, Hobbs, NM 88241-1980  
District II  
811 S. 1st Street Artesia, NM 88210-1404  
District III  
1000 Rio Brazos Rd, Aztec, NM 87410  
District IV  
PO Box 2088, Santa Fe, NM 87504-2088

State of New Mexico  
Energy, Minerals & Natural Resources Department  
OIL CONSERVATION DIVISION  
PO Box 2088  
Santa Fe, NM 87504-2088

Form C-101  
Revised February 10, 1994  
Instructions on back  
Submit to Appropriate District Office  
State Lease - 6 Copies  
Fee Lease - 5 Copies

☐ AMENDED REPORT

APPLICATION FOR PERMIT TO DRILL, RE-ENTER, DEEPEN, PLUG BACK, OR ADD A ZONE

Operator Name and Address Mack Energy Corporation P.O. Box 960 Artesia, NM 88211-0960		OGRID Number 013837 API Number 30-015-30575
Property Code 24229	Property Name Mimosa State	Well No. 1

Surface Location

UL or lot no.	Section	Township	Range	Lot Idn	Feet from the	North/South line	Feet from the	East/West line	County
K	30	17S	29E		2310	South	1580	West	Eddy

Proposed Bottom Hole Location If Different From Surface

UL or lot No.	Section	Township	Range	Lot Idn	Feet from the	North/South line	Feet from the	East/West line	County
Proposed Pool 1 Empire 50 96210					Proposed Pool 2				

Work Type Code	Well Type Code	Cable/Rotary	Lease Type Code	Ground Level Elevation
N	O	R	S	3649
Multiple	Proposed Depth	Formation	Contractor	Spud Date
No	5500'	Paddock	LaRue	2/24/1999

Proposed Casing and Cement Program

Hole Size	Casing Size	Casing weight/foot	Setting Depth	Sacks of Cement	Estimated TOC
17 1/2	13 3/8	54.5	125'	Circ	Post ID-1
12 1/4	8 5/8	24	800'	Circ	2-19-99
7 7/8	5 1/2	17	5500'	Sufficient to Circ	API + Loc

Describe the proposed program. If this application is to DEEPEN or PLUG BACK give the data on the present productive zone and proposed new productive zone. Describe the blowout prevention program, if any. Use additional sheets if necessary.

Mack Energy Corporation proposes to drill to 125', run 13 3/8" casing and cement. Drill to 800', run 8 5/8" casing and cement. Drill to 5500' and test Paddock Zone, run 5 1/2" casing and cement. Put well on production.

Note: On Production string, a fluid caliber will be run, will figure cement, with 25% excess, attempt to circulate.

I hereby certify that the information given above is true and complete to the best of my knowledge and belief

Signature

*Matt J. Brewer*

Printed name:

Matt J. Brewer

Title:

Geological Engineer

Date:

2/08/1999

Phone:

(505)748-1288

OIL CONSERVATION DIVISION

Approval by:

ORIGINAL SIGNED BY TIM W. GLENN  
DISTRICT II SUPERVISOR

Title:

Approval Date:

2-9-99

Expiration Date:

2-9-00

Conditions of Approval:

Attached ☐

DISTRICT I  
P.O. Box 1980, Hobbs, NM 88241-1980

State of New Mexico  
Energy, Minerals and Natural Resources Department

Form C-102

DISTRICT II  
P.O. Drawer DD, Artesia, NM 88211-0719

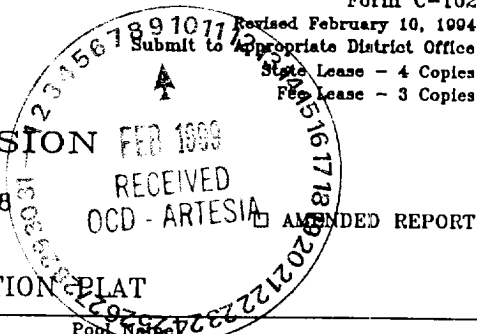
DISTRICT III  
1000 Rio Brazos Rd., Aztec, NM 87410

DISTRICT IV  
P.O. BOX 2088, SANTA FE, N.M. 87504-2088

OIL CONSERVATION DIVISION  
P.O. Box 2088

Santa Fe, New Mexico 87504-2088

Revised February 10, 1994  
Submit to Appropriate District Office  
State Lease - 4 Copies  
Fee Lease - 3 Copies



WELL LOCATION AND ACREAGE DEDICATION PLAT

API Number	Pool Code 96210	Pool Name Empire Yeso
Property Code	Property Name MIMOSA STATE	Well Number 1
OGRID No. 013837	Operator Name MACK ENERGY CORPORATION	Elevation 3649'

Surface Location

UL or lot No.	Section	Township	Range	Lot Idn	Feet from the	North/South line	Feet from the	East/West line	County
K	30	17 S	29 E		2310	SOUTH	1580	WEST	EDDY

Bottom Hole Location If Different From Surface

UL or lot No.	Section	Township	Range	Lot Idn	Feet from the	North/South line	Feet from the	East/West line	County
Dedicated Acres 40	Joint or Infill	Consolidation Code	Order No.						

NO ALLOWABLE WILL BE ASSIGNED TO THIS COMPLETION UNTIL ALL INTERESTS HAVE BEEN CONSOLIDATED  
OR A NON-STANDARD UNIT HAS BEEN APPROVED BY THE DIVISION

LOT 1 27.71 AC.			
LOT 2 27.94 AC.			
LOT 3 28.17 AC.			
LOT 4 28.40 AC.			

---910.80---  
---927.8775---652.1225  
---941.16---  
1580'  
2310'  
667.9'

OPERATOR CERTIFICATION

I hereby certify the the information contained herein is true and complete to the best of my knowledge and belief.

Matt J. Brewer  
Signature

Matt J. Brewer  
Printed Name

Geological Engineer  
Title

2/8/99  
Date

SURVEYOR CERTIFICATION

I hereby certify that the well location shown on this plat was plotted from field notes of actual surveys made by me or under my supervision, and that the same is true and correct to the best of my belief.

OCTOBER 2, 1998

Date Surveyed \_\_\_\_\_ CDG

Signature \_\_\_\_\_  
Professional Surveyor

Certification No. RONALD E. ELLISON 3239  
GARY E. ELLISON 12641

This is a detailed map of Mimosa State #1, showing a grid of land parcels, roads, and geographical features. The map includes labels for "MIMOSA STATE #1", "Loco Hills", "CALTEMBER", "MILANMAR", "FIELD", and "CROW". It also shows various numbered parcels (e.g., 1, 2, 6, 11, 12, 13, 14, 16, 18, 19, 24, 27, 30, 31, 32, 36) and a network of roads and boundaries. The map is a black and white line drawing with a grid overlay. The grid cells are numbered, and some cells contain small circles or dots. The map shows a complex network of roads and boundaries, with some areas labeled as "FIELD" or "CROW". The map is oriented with North at the top.

SEC. 30 TWP. 17-S RGE. 29-E

SURVEY N.M.P.M.

COUNTY EDDY

DESCRIPTION 2310' FSL & 1580' FWL

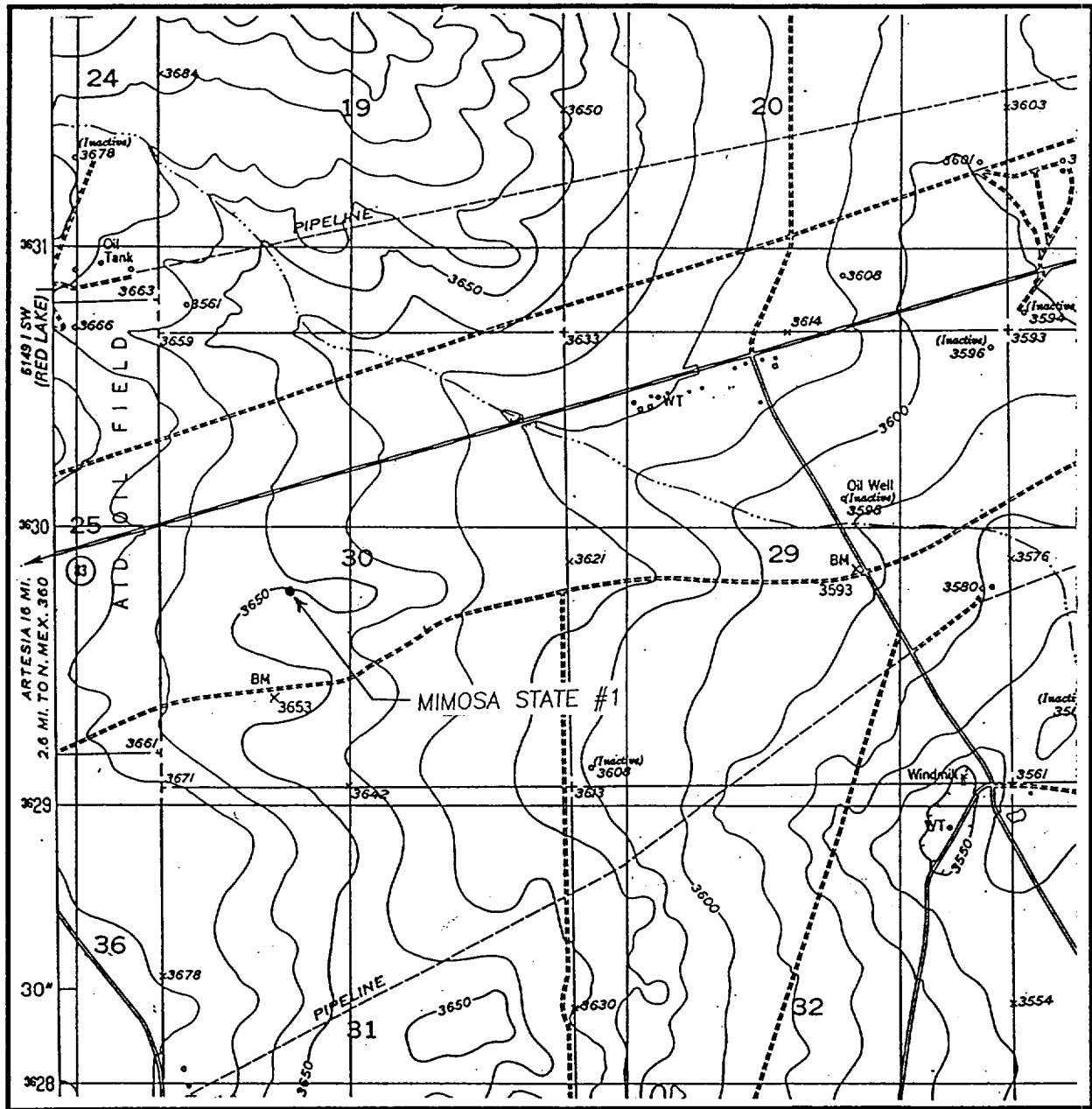
ELEVATION 3649'

OPERATOR MACK ENERGY CORPORATION

LEASE MIMOSA STATE

**JOHN WEST ENGINEERING  
HOBBS, NEW MEXICO  
(505) 393-3117**

# LOCATION VERIFICATION MAP



SCALE: 1" = 2000'

CONTOUR INTERVAL - 10'

SEC. 30 TWP. 17-S RGE. 29-E

SURVEY N.M.P.M.

COUNTY EDDY

DESCRIPTION 2310' FSL & 1580' FWL

ELEVATION 3649'

OPERATOR MACK ENERGY CORPORATION

LEASE MIMOSA STATE

U.S.G.S. TOPOGRAPHIC MAP

RED LAKE SE, NM

**JOHN WEST ENGINEERING**

**HOBBS, NEW MEXICO**

**(505) 393-3117**