

N. M. Oil & Gas Division
811 S. 1ST ST.
ARTESIA, NM 88202-2634
CONTACT RECEIVING
DIVISION
OF OIL & GAS
(Other Instructions on
Form 3160-3)

BLM Roswell District
Modified Form No.
NMO60-3160-2

30-015-30890
C/SF

UNITED STATES
DEPARTMENT OF THE INTERIOR
BUREAU OF LAND MANAGEMENT

APPLICATION FOR PERMIT TO DRILL, DEEPEN, OR PLUG BACK

1a. TYPE OF WORK
DRILL ☒ DEEPEN ☐ PLUG BACK ☐
b. TYPE OF WELL
OIL WELL ☒ GAS WELL ☐ OTHER ☐ SINGLE ZONE ☐ MULTIPLE ZONE ☐
2. NAME OF OPERATOR
Marbob Energy Corporation 14049
3a. Area Code & Phone No.
505-748-3303
3. ADDRESS OF OPERATOR
P. O. BOX 227 Artesia, NM 88210
4. LOCATION OF WELL (Report location clearly and in accordance with any State requirements.)
At surface
1797 FSL 330 FWL
At proposed prod. zone
SAME Unit L
14. DISTANCE IN MILES AND DIRECTION FROM NEAREST TOWN OR POST OFFICE*
EAST OF LOCO HILLS ON HWY 82 APPROX 2.2 MILES
15. DISTANCE FROM PROPOSED*
LOCATION TO NEAREST
PROPERTY OR LEASE LINE, FT.
(Also to nearest drlg. unit line, if any) 330'
16. NO. OF ACRES IN LEASE
40
18. DISTANCE FROM PROPOSED LOCATION*
TO NEAREST WELL, DRILLING, COMPLETED,
OR APPLIED FOR, ON THIS LEASE, FT.
6000'
19. PROPOSED DEPTH
6000'
20. ROTARY OR CABLE TOOLS
ROTARY
21. ELEVATIONS (Show whether DF, RT, GR, etc.)
3661' GR
22. APPROX. DATE WORK WILL START*

5. LEASE DESIGNATION AND SERIAL NO.
LC-029020B
6. IF INDIAN, ALLOTTEE OR TRIBE NAME
7. UNIT AGREEMENT NAME
8. FARM OR LEASE NAME
KEN FEDERAL 23884
9. WELL NO.
1
10. FIELD AND POOL, OR WILDCAT
LOCO HILLS PADDOCK
11. SEC., T., R., M., OR BLK.
AND SURVEY OR AREA
SEC. 23-T17S-R30E
12. COUNTY OR PARISH
EDDY
13. STATE
NM

PROPOSED CASING AND CEMENTING PROGRAM

HOLE SIZE	CASING SIZE	WEIGHT/FOOT	GRADE	THREAD TYPE	SETTING DEPTH	QUANTITY OF CEMENT
12 1/4"	8 5/8"	24#	J-55	LTC	425'	300 SX, CIRC
7 7/8"	5 1/2"	17#	J-55	LTC	6000'	1400 SX, ATTEMPT TO CIRC

ROSWELL CONTROLLED WATER BASIN

PAY ZONE WILL BE SELECTIVELY STIMULATED AND PERFORATED AS
NEEDED FOR OPTIMUM PRODUTCION.

- ATTACHED ARE:
1. WELL LOCATION & DEDICATION PLAT
 2. SURFACE USE PLAN
 3. SUPPLEMENTAL DRILLING DATA

APPROVAL SUBJECT TO
GENERAL REQUIREMENTS AND
SPECIAL STIPULATIONS
ATTACHED

IN ABOVE SPACE DESCRIBE PROPOSED PROGRAM: If proposal is to deepen or plug back, give data on present productive zone and proposed new productive zone. If proposal is to drill or deepen directionally, give pertinent data on subsurface locations and measured and true vertical depths. Give blowout preventer program, if any.

24. SIGNED Dehonda Nelson TITLE Production Clerk DATE 10/30/98
(This space for Federal or State office use)

PERMIT NO. 1/s/ Gary A. Stephens Acting APPROVAL DATE MAR 09 1999
APPROVED BY Assistant Field Office Manager. TITLE Lands and Minerals DATE
CONDITIONS OF APPROVAL, IF ANY:

DISTRICT I
P.O. Box 1980, Hobbs, NM 88241-1980

State of New Mexico

Energy, Minerals and Natural Resources Department

Form C-102
Revised February 10, 1994
Submit to Appropriate District Office
State Lease - 4 Copies
Fee Lease - 3 Copies

DISTRICT II
P.O. Drawer DD, Artesia, NM 88211-0719

DISTRICT III
1000 Rio Brazos Rd., Aztec, NM 87410

OIL CONSERVATION DIVISION

P.O. Box 2088
Santa Fe, New Mexico 87504-2088

DISTRICT IV
P.O. Box 2088, Santa Fe, NM 87504-2088

☐ AMENDED REPORT

WELL LOCATION AND ACREAGE DEDICATION PLAT

API Number	Pool Code 96718	Pool Name LOCO HILLS Paddock
Property Code	Property Name KEN FEDERAL	Well Number 1
OGRID No. 14049	Operator Name MARBOB ENERGY CORPORATION	Elevation 3661'

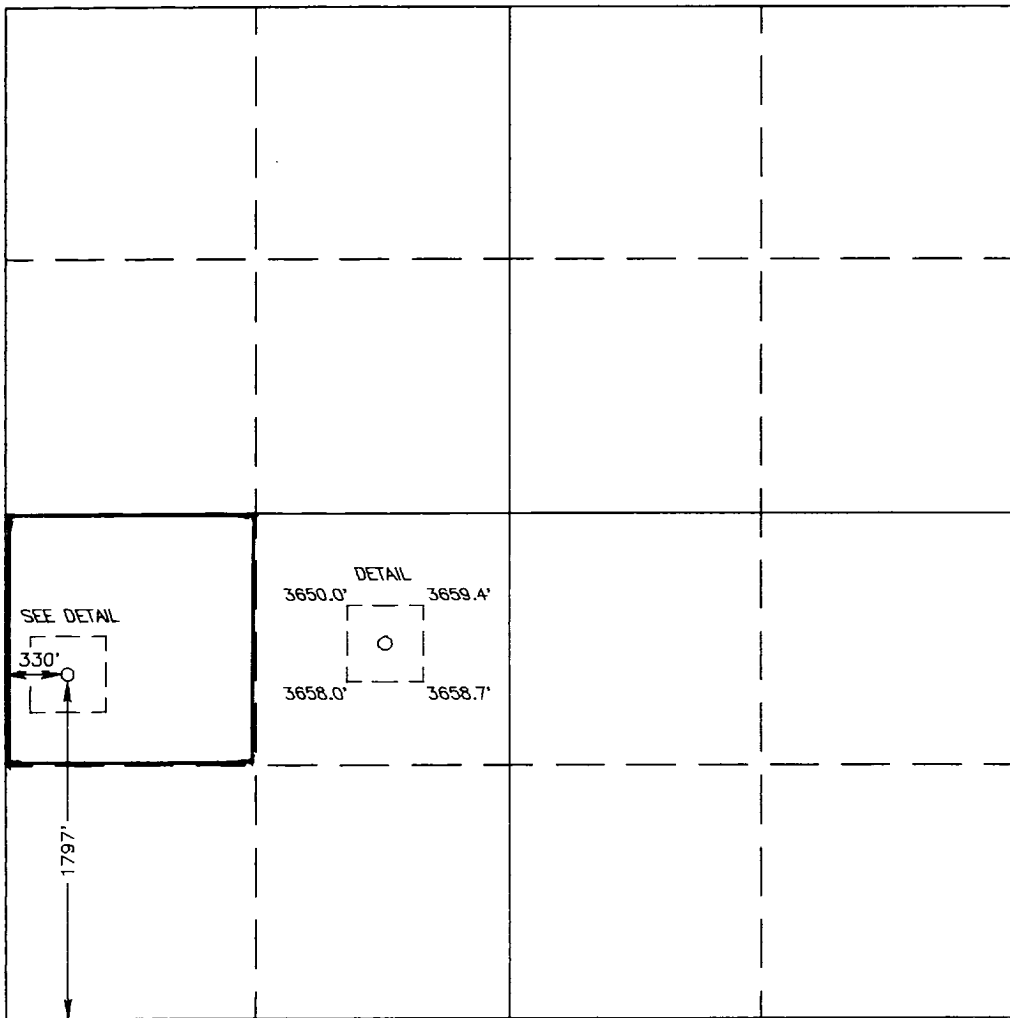
Surface Location

UL or lot No. L	Section 23	Township 17 S	Range 30 E	Lot Idn	Feet from the 1797	North/South line SOUTH	Feet from the 330	East/West line WEST	County EDDY
--------------------	---------------	------------------	---------------	---------	-----------------------	---------------------------	----------------------	------------------------	----------------

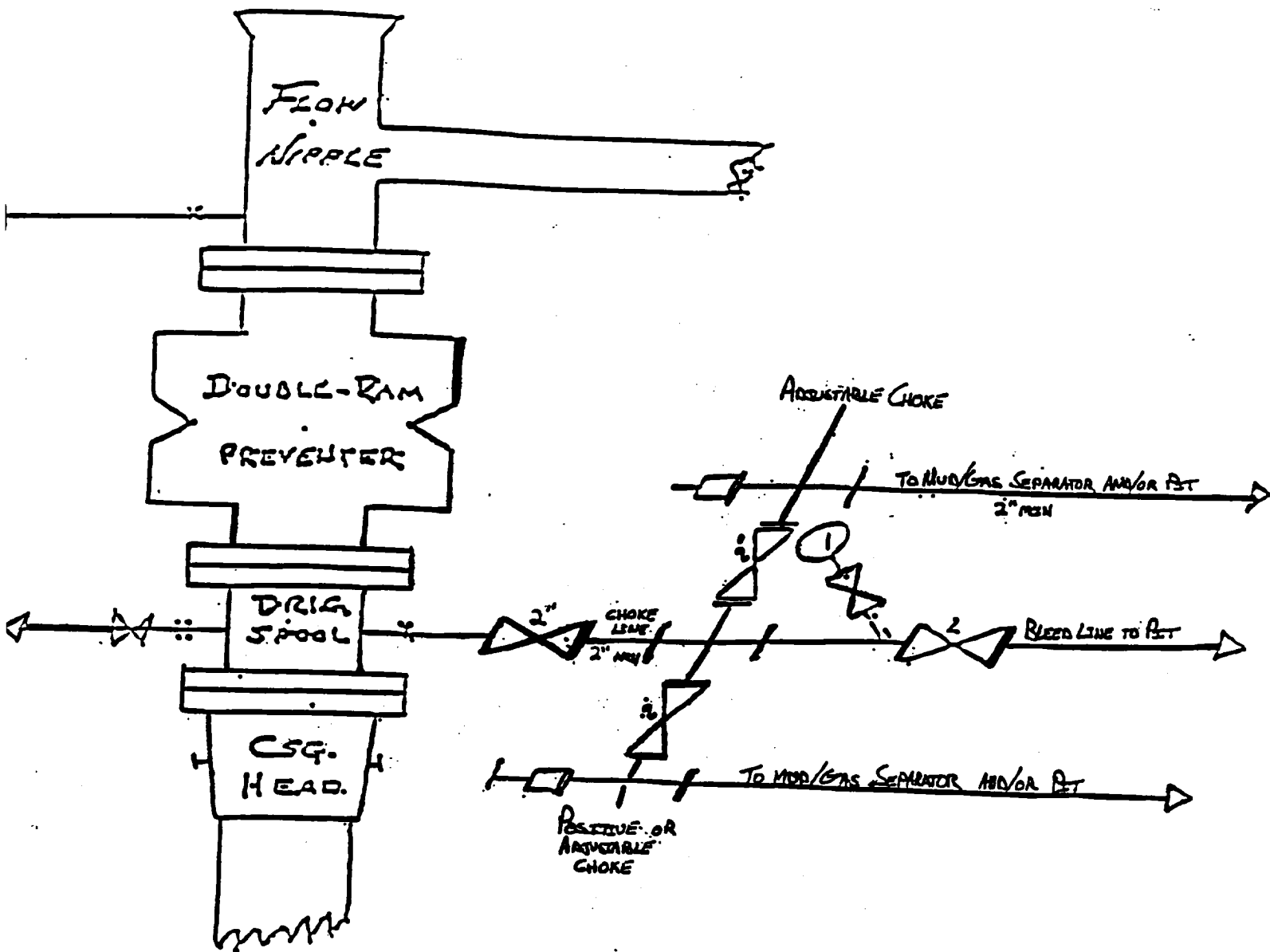
Bottom Hole Location If Different From Surface

UL or lot No.	Section	Township	Range	Lot Idn	Feet from the	North/South line	Feet from the	East/West line	County
Dedicated Acres 40	Joint or Infill	Consolidation Code	Order No.						

NO ALLOWABLE WILL BE ASSIGNED TO THIS COMPLETION UNTIL ALL INTERESTS HAVE BEEN CONSOLIDATED
OR A NON-STANDARD UNIT HAS BEEN APPROVED BY THE DIVISION

	<p>OPERATOR CERTIFICATION</p> <p>I hereby certify the the information contained herein is true and complete to the best of my knowledge and belief.</p> <p><i>Rhonda Nelson</i> Signature RHONDA NELSON Printed Name PRODUCTION ANALYST Title 10/30/98 Date</p>	
	<p>SURVEYOR CERTIFICATION</p> <p>I hereby certify that the well location shown on this plat was plotted from field notes of actual surveys made by me or under my supervision and that the same is true and correct to the best of my belief.</p> <p>OCTOBER 1, 1998 Date Surveyed CDG Signature & Seal of Professional Surveyor <i>Ronald J. Edson</i> W.O. Num. 98-11-1294 Certificate No. RONALD J. EDSON, 3239 GARY O. EDSON, 12841 MARION McDONALD, 12185</p>	

B. JW OUT PREVENTER AND CHOKE MANIFOLD



10"/900 Cameron SS Space Saver
3000# Working Pressure
3000# Working Pressure Choke Manifold

Ken Federal #1
1797' FSL & 330' FWL
Section 23; T17s -- R30e
Eddy County, New Mexico

Exhibit # 1

Attachment to Exhibit #1
NOTES REGARDING THE BLOWOUT PREVENTERS

1. Drilling nipple to be so constructed that it can be removed without use of a welder through rotary table opening, with minimum I.D. equal to preventer bore.
2. Wear ring to be properly installed in head.
3. Blow out preventer and all fittings must be in good condition, 1000 psi W.P. minimum.
4. All fittings to be flanged.
5. Safety valve must be available on rig floor at all times with proper connections, valve to be full bore 1000 psi W.P. minimum.
6. All choke and fill lines to be securely anchored, especially ends of choke lines.
7. Equipment through which bit must pass shall be at least as large as the diameter of the casing being drilled through.
8. Kelly cock on kelly.
9. Extension wrenches and hand wheels to be properly installed.
10. Blow out preventer control to be located as close to driller's position as feasible.
11. Blow out preventer closing equipment to include minimum 40 gallon accumulator, two independent sources of pump power on each closing unit installation, and meet all API specifications.