

PO Box 1980, Hobbs, NM 88241-1980
District II
811 S. 1st Street Artesia, NM 88210-1404
District III
1000 Rio Brazos Rd, Aztec, NM 87410
District IV
PO Box 2088, Santa Fe, NM 87504-2088

State of New Mexico
Energy, Minerals & Natural Resources Department
OIL CONSERVATION DIVISION
PO Box 2088
Santa Fe, NM 87504-2088

Form C-101
Revised February 10, 1994
Instructions on back
Submit to Appropriate District Office
State Lease - 6 Copies
Fee Lease - 5 Copies

☐ AMENDED REPORT

APPLICATION FOR PERMIT TO DRILL, RE-ENTER, DEEPEN, PLUGBACK, OR ADD A ZONE

Operator Name and Address Mack Energy Corporation P.O. Box 960 Artesia, NM 88211-0960		OGRID Number 013837
Property Code 24229		API Number 30-015-30626
Property Name Mimosa State		Well No. 2

Surface Location

UL or lot no.	Section	Township	Range	Lot Idn	Feet from the	North/South line	Feet from the	East West line	County
K	30	17S	29E		1650	South	2070	West	Eddy

Proposed Bottom Hole Location If Different From Surface

UL or lot No.	Section	Township	Range	Lot Idn	Feet from the	North/South line	Feet from the	East/West line	County
Proposed Pool 1 Empire Yeso 96210					Proposed Pool 2				

Work Type Code	Well Type Code	Cable/Rotary	Lease Type Code	Ground Level Elevation
N	O	R	S	3642
Multiple	Proposed Depth	Formation	Contractor	Spud Date
No	5500'	Paddock	LaRue	5/24/1999

Proposed Casing and Cement Program

Hole Size	Casing Size	Casing weight/foot	Setting Depth	Sacks of Cement	Estimated TOC
17 1/2	13 3/8	54.5	125'	Circ	Post ID-1
12 1/4	8 5/8	24	800'	Circ	4-16-99
7 7/8	5 1/2	17	5500'	Sufficient to Circ	API 4wcc

Describe the proposed program. If this application is to DEEPEN or PLUG BACK give the data on the present productive zone and proposed new productive zone. Describe the blowout prevention program, if any. Use additional sheets if necessary.

Mack Energy Corporation proposes to drill to 125', run 13 3/8" casing and cement. Drill to 800', run 8 5/8" casing and cement. Drill to 5500' and test Paddock Zone, run 5 1/2" casing and cement. Put well on production.

Note: On Production string, a fluid caliber will be run, will figure cement, with 25% excess, attempt to circulate.

NSL-4252 (SD) 4/8/99

I hereby certify that the information given above is true and complete to the best of my knowledge and belief Signature: <u>Matt J. Brewer</u> Printed name: Matt J. Brewer Title: Geological Engineer Date: 2/08/1999		OIL CONSERVATION DIVISION Approval by: ORIGINAL SIGNED BY TIM W. GUM Title: DISTRICT II SUPERVISOR Approval Date: 4-13-99 Expintion Dstc: 4-13-00 Conditions of Approval: Attached <input type="checkbox"/>	
--	--	---	--

DISTRICT I
P.O. Box 1980, Hobbs, NM 88241-1980

DISTRICT II
P.O. Drawer DD, Artesia, NM 88211-0719

DISTRICT III
1000 Rio Brazos Rd., Aztec, NM 87410

DISTRICT IV
P.O. BOX 2088, SANTA FE, N.M. 87504-2088

State of New Mexico
Energy, Minerals and Natural Resources Department

Form C-102
Revised February 10, 1994
Submit to Appropriate District Office
State Lease - 4 Copies
Fee Lease - 3 Copies

OIL CONSERVATION DIVISION

P.O. Box 2088
Santa Fe, New Mexico 87504-2088

☐ AMENDED REPORT

WELL LOCATION AND ACREAGE DEDICATION PLAT

API Number	Pool Code 96210	Pool Name Empire Yeso
Property Code	Property Name MIMOSA STATE	Well Number 2
OGRID No. 013837	Operator Name MACK ENERGY CORPORATION	Elevation 3642'

Surface Location

UL or lot No. K	Section 30	Township 17 S	Range 29 E	Lot Idn	Feet from the 1650	North/South line SOUTH	Feet from the 2070	East/West line WEST	County EDDY
--------------------	---------------	------------------	---------------	---------	-----------------------	---------------------------	-----------------------	------------------------	----------------

Bottom Hole Location If Different From Surface

UL or lot No.	Section	Township	Range	Lot Idn	Feet from the	North/South line	Feet from the	East/West line	County
Dedicated Acres		Joint or Infill	Consolidation Code	Order No.					

NO ALLOWABLE WILL BE ASSIGNED TO THIS COMPLETION UNTIL ALL INTERESTS HAVE BEEN CONSOLIDATED
OR A NON-STANDARD UNIT HAS BEEN APPROVED BY THE DIVISION

LOT 1 27.71 AC.			
LOT 2 27.94 AC.			
LOT 3 28.17 AC.			
LOT 4 28.40 AC.			

2070'

1650'

OPERATOR CERTIFICATION

I hereby certify the the information contained herein is true and complete to the best of my knowledge and belief.

Matt J. Brewer
Signature

Matt J. Brewer
Printed Name

Geological Engineer
Title

2/8/99
Date

SURVEYOR CERTIFICATION

I hereby certify that the well location shown on this plat was plotted from field notes of actual surveys made by me or under my supervision, and that the same is true and correct to the best of my belief.

OCTOBER 2, 1998

Date Surveyed _____ CDG

Signature of Seal of Professional Surveyor _____

NEW MEXICO
RONALD J. EIDSON
10-07-98
98-11-1381

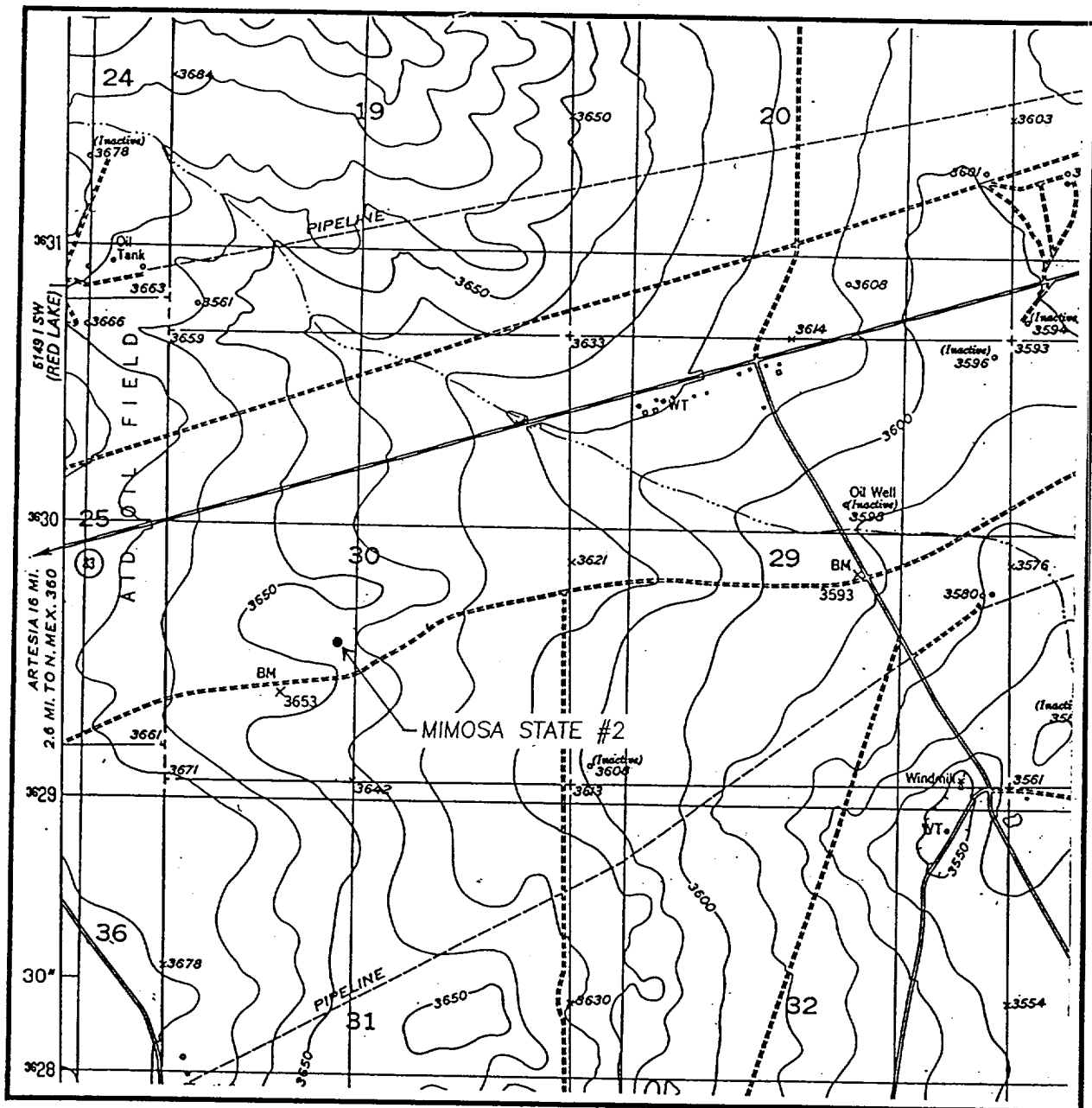
Certificate No. RONALD J. EIDSON 3239
12641

See Amended Copy

This is a detailed map of Mimosa State #2, showing a grid of land parcels, roads, and geographical features. The map includes labels for 'MIMOSA STATE #2', 'FAP 28', 'CALTRUNG', 'MALUMA', 'FIELD', 'CROW', 'Loco Hills', and various numbered parcels (1, 2, 6, 7, 9, 10, 11, 12, 13, 14, 18, 19, 24, 31, 32, 36). The map also shows a river, a road, and a small settlement area.

**JOHN WEST ENGINEERING
HOBBS, NEW MEXICO
(505) 393-3117**

LOCATION VERIFICATION MAP



SCALE: 1" = 2000'

CONTOUR INTERVAL - 10'

SEC. 30 TWP. 17-S RGE. 29-E

SURVEY N.M.P.M.

COUNTY EDDY

DESCRIPTION 1650' FSL & 2070' FWL

ELEVATION 3642'

OPERATOR MACK ENERGY CORPORATION

LEASE MIMOSA STATE

U.S.G.S. TOPOGRAPHIC MAP

RED LAKE SE, NM

JOHN WEST ENGINEERING
HOBBS, NEW MEXICO
(505) 393-3117



**NEW MEXICO ENERGY, MINERALS
& NATURAL RESOURCES DEPARTMENT**

OIL CONSERVATION DIVISION
2040 South Pacheco Street
Santa Fe, New Mexico 87505
(505) 927-7151

April 8, 1999

**Mack Energy Corporation
P. O. Box 960
Artesia, New Mexico 88211-0960
Attention: Matt Brewer**

Telefax No. (505) 746-2362

Administrative Order NSL-4252(SD)

Dear Mr. Brewer:

Reference is made to your application dated March 18, 1999 for Mack Energy Corporation ("Mack Energy") to drill its proposed Mimosa State Well No. 2 at an unorthodox "infill" oil well location within an existing standard 40-acre oil spacing and proration unit comprising the NE/4 SW/4 (Unit K) of Section 30, Township 17 South, Range 29 East, NMPM, Undesignated Empire-Yeso Pool, Eddy County, New Mexico.

This 40-acre unit is currently dedicated to Mack Energy's Mimosa State Well No. 1 (API No. 30-015-30575) located at a standard oil well location 2310 feet from the South line and 1580 feet from the West line of Section 30.

The application has been duly filed under the provisions of Rule 104.F of the Rules and Regulations of the New Mexico Oil Conservation Division ("Division").

By the authority granted me under the provisions of Division Rule 104.F(2), the following described well to be drilled at an unorthodox "infill" oil well location is hereby approved:

**Mimosa State Well No. 2
1650' FSL & 2070' FWL.**

Further, both the existing Mimosa State Well No. 1 and the proposed Mimosa State Well No. 2 are to be simultaneously dedicated to the subject 40-acre unit.

Sincerely,

A handwritten signature in cursive script, appearing to read "Lori Wrotenbery / LWES".

Lori Wrotenbery
Director

LW/MES/kv

cc: New Mexico Oil Conservation Division - Artesia
New Mexico State Land Office - Santa Fe

DISTRICT I
P.O. Box 1980, Hobbs, NM 88241-1980

DISTRICT II
P.O. Drawer DD, Artesia, NM 88211-0719

DISTRICT III
1000 Rio Brazos Rd., Aztec, NM 87410

DISTRICT IV
P.O. BOX 2088, SANTA FE, N.M. 87504-2088

State of New Mexico
Energy, Minerals and Natural Resources Department

OIL CONSERVATION DIVISION
P.O. Box 2088

Santa Fe, New Mexico 87504-2088

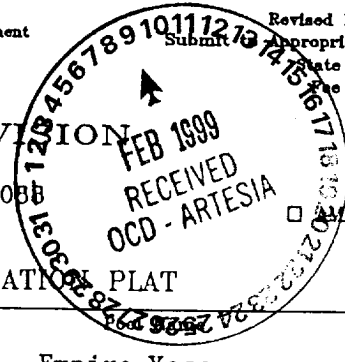
Form C-102

Revised February 10, 1994

Submit to Appropriate District Office

State Lease - 4 Copies

Lease - 3 Copies



☐ AMENDED REPORT

WELL LOCATION AND ACREAGE DEDICATION PLAT

API Number	Pool Code 96210	Empire Yeso
Property Code	Property Name MIMOSA STATE	Well Number 2
OGRID No. 013837	Operator Name MACK ENERGY CORPORATION	Elevation 3642'

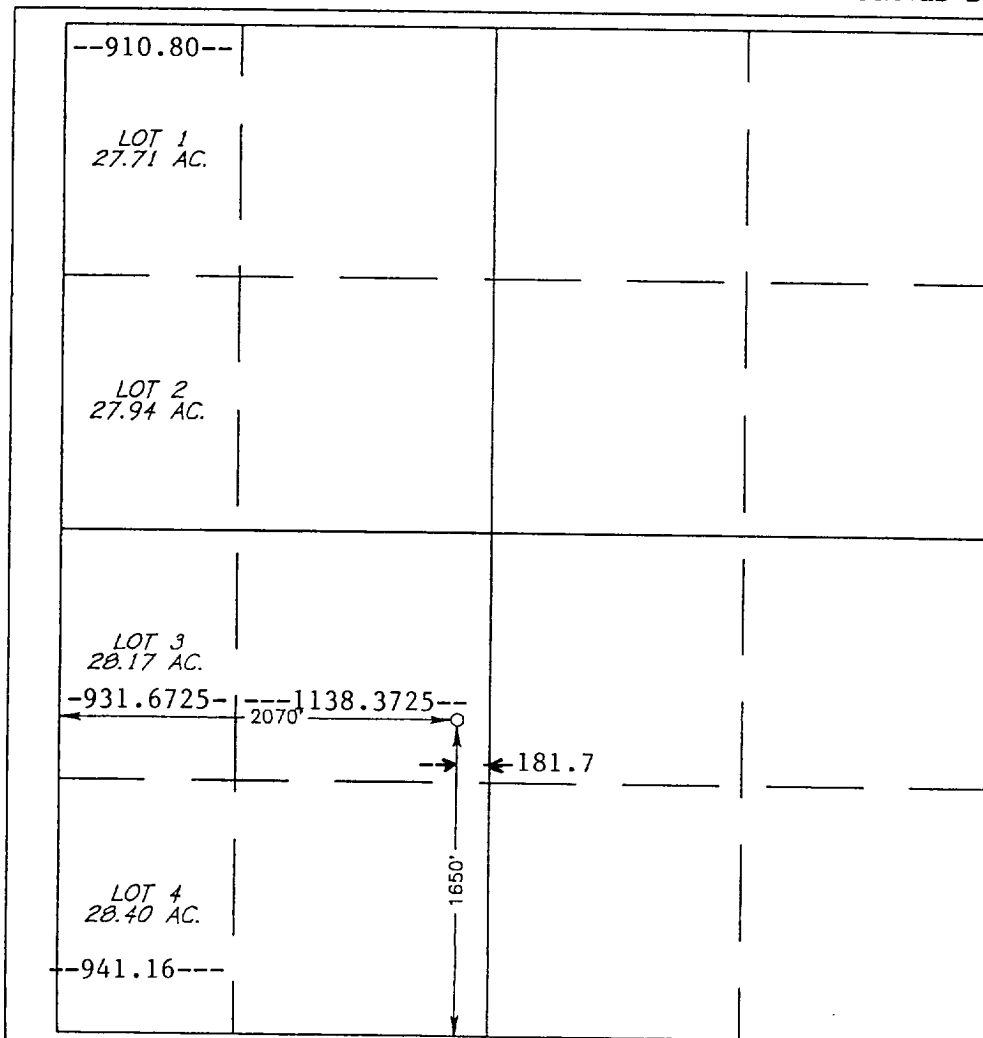
Surface Location

UL or lot No. K	Section 30	Township 17 S	Range 29 E	Lot Idn	Feet from the 1650	North/South line SOUTH	Feet from the 2070	East/West line WEST	County EDDY
--------------------	---------------	------------------	---------------	---------	-----------------------	---------------------------	-----------------------	------------------------	----------------

Bottom Hole Location If Different From Surface

UL or lot No.	Section	Township	Range	Lot Idn	Feet from the	North/South line	Feet from the	East/West line	County
Dedicated Acres 40	Joint or Infill	Consolidation Code	Order No.						

NO ALLOWABLE WILL BE ASSIGNED TO THIS COMPLETION UNTIL ALL INTERESTS HAVE BEEN CONSOLIDATED
OR A NON-STANDARD UNIT HAS BEEN APPROVED BY THE DIVISION



OPERATOR CERTIFICATION

I hereby certify the the information
contained herein is true and complete to the
best of my knowledge and belief.

Matt J. Brewer
Signature

Matt J. Brewer
Printed Name

Geological Engineer
Title

2/8/99
Date

SURVEYOR CERTIFICATION

I hereby certify that the well location shown
on this plat was plotted from field notes of
actual surveys made by me or under my
supervision and that the same is true and
correct to the best of my belief.

OCTOBER 2, 1998

Date Surveyed CDG

Signature of Seal of
Professional Surveyor

Ronald S. Edson
NEW MEXICO
10-07-98
98-11-1301

Certificate No. RONALD S. EDSON 3239
GARDEN 12641
PROFESSIONAL