

UNITED STATES
DEPARTMENT OF THE INTERIOR
BUREAU OF LAND MANAGEMENT

APPLICATION FOR PERMIT TO DRILL, DEEPEN, OR PLUG BACK

1a. TYPE OF WORK
DRILL ☒ DEEPEN ☐ PLUG BACK ☐

b. TYPE OF WELL
OIL WELL ☒ GAS WELL ☐ OTHER ☐

2. NAME OF OPERATOR
Marbob Energy Corporation

3. ADDRESS OF OPERATOR
P. O. BOX 227 Artesia, NM 88210

4. LOCATION OF WELL (Report location clearly and in accordance with any State requirements.)
At surface
260 FSL 1185 FEL
At proposed prod. zone
SAME

5. LEASE DESIGNATION AND SERIAL NO.
LC-028793C

6. IF INDIAN, ALLOTTEE OR TRIBE NAME

7. UNIT AGREEMENT NAME
BURCH KEELY UNIT

8. FARM OR LEASE NAME
BURCH KEELY UNIT 6497

9. WELL NO.
864

10. FIELD AND POOL, OR WILDCAT
GRBG JACKSON SR Q GRBG SA

11. SEC., T., R., M., OR BLK. AND SURVEY OR AREA
SEC. 19-T17S-R30E

12. COUNTY OR PARISH
EDDY CO

13. STATE
NM

14. DISTANCE IN MILES AND DIRECTION FROM NEAREST TOWN OR POST OFFICE*
EAST OF ARTESIA ON US 82 APPROX 23.1 MILES

15. DISTANCE FROM PROPOSED LOCATION TO NEAREST PROPERTY OR LEASE LINE, FT. (Also to nearest drig. unit line, if any)
260'

16. NO. OF ACRES IN LEASE
1120

17. NO. OF ACRES ASSIGNED TO THIS WELL
40

18. DISTANCE FROM PROPOSED LOCATION TO NEAREST WELL, DRILLING, COMPLETED, OR APPLIED FOR, ON THIS LEASE, FT.

19. PROPOSED DEPTH
4800'

20. ROTARY OR CABLE TOOLS
ROTARY

21. ELEVATIONS (Show whether DF, RT, GR, etc.)
3616' GR

22. APPROX. DATE WORK WILL START*
MAY 1, 1999

PROPOSED CASING AND CEMENTING PROGRAM

HOLE SIZE	CASING SIZE	WEIGHT/FOOT	GRADE	THREAD TYPE	SETTING DEPTH	QUANTITY OF CEMENT
12 1/4"	8 5/8"	24#	J-55	STC	350'	300 SX
7 7/8"	5 1/2"	17#	J-55	LTC	4800'	SUFFICIENT TO COVER 200' ABOVE ALL KNOWN OIL & GAS HORIZONS

PAY ZONE WILL BE SELECTIVELY PERFORATED AND STIMULATED AS NEEDED FOR OPTIMUM PRODUCTION.

ATTACHED ARE: 1. WELL LOCATION AND ACREAGE DEDICATION PLAT
2. SUPPLEMENTAL DRILLING DATA
3. SURFACE USE PLAN



Bst FD-1
5-14-99
API & Loc

IN ABOVE SPACE DESCRIBE PROPOSED PROGRAM: If proposal is to deepen or plug back, give data on present productive zone and proposed new productive zone. If proposal is to drill or deepen directionally, give pertinent data on subsurface locations and measured and true vertical depths. Give blowout preventer program, if any.

SIGNED Robin Cockrum

TITLE Production Clerk

DATE 4/6/99

(This space for Federal or State office use)

PERMIT NO. (ORIG. SGD.) ARMANDO A. LOPEZ

Acting

APPROVAL DATE
Assistant Field Office Manager.

APPROVED BY

TITLE Lands and Minerals

DATE 5-6-99

DISTRICT I
P.O. Box 1880, Hobbs, NM 88241-1980

State of New Mexico
Energy, Minerals and Natural Resources Dept.

Form C-102
Revised February 10, 1994
Submit to Appropriate District Office
State Lease - 4 Copies
Fee Lease - 3 Copies

DISTRICT II
P.O. Drawer DD, Artesia, NM 88211-0719

DISTRICT III
1000 Rio Brazos Rd., Aztec, NM 87410

DISTRICT IV
P.O. BOX 2088, SANTA FE, N.M. 87504-2088

OIL CONSERVATION DIVISION

P.O. Box 2088
Santa Fe, New Mexico 87504-2088

☐ AMENDED REPORT

WELL LOCATION AND ACREAGE DEDICATION PLAT

API Number	Pool Code 28509	Pool Name GRBG JACKSON SR Q GRBG SA
Property Code 6497	Property Name BURCH KEELY UNIT	Well Number 864
OGRID No. 14049	Operator Name MARBOB ENERGY CORPORATION	Elevation 3616'

Surface Location

UL or lot No. P	Section 19	Township 17 S	Range 30 E	Lot Idn	Feet from the 260	North/South line SOUTH	Feet from the 1185	East/West line EAST	County EDDY
--------------------	---------------	------------------	---------------	---------	----------------------	---------------------------	-----------------------	------------------------	----------------

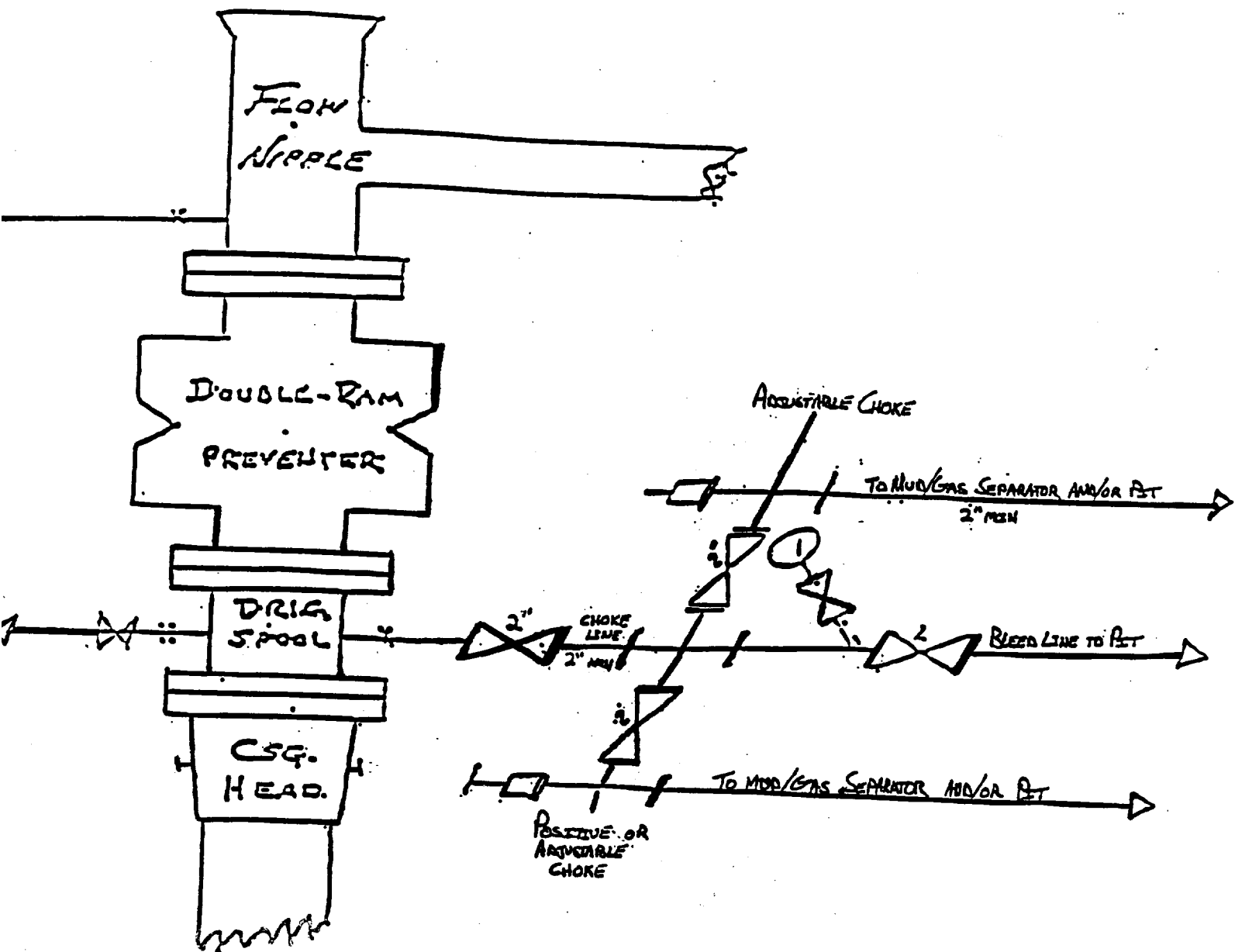
Bottom Hole Location If Different From Surface

UL or lot No.	Section	Township	Range	Lot Idn	Feet from the	North/South line	Feet from the	East/West line	County
Dedicated Acres 40	Joint or Infill	Consolidation Code	Order No.						

NO ALLOWABLE WILL BE ASSIGNED TO THIS COMPLETION UNTIL ALL INTERESTS HAVE BEEN CONSOLIDATED
OR A NON-STANDARD UNIT HAS BEEN APPROVED BY THE DIVISION

				<p>SEE DETAIL</p>	
<p>DETAIL</p>				<p>OPERATOR CERTIFICATION</p> <p>I hereby certify the the information contained hereth is true and complete to the best of my knowledge and belief.</p> <p><i>Robin Cockrum</i> Signature ROBIN COCKRUM Printed Name PRODUCTION ANALYST Title 4/6/99 Date</p>	
				<p>SURVEYOR CERTIFICATION</p> <p>I hereby certify that the well location shown on this plat was plotted from field notes of actual surveys made by me or under my supervision, and that the same is true and correct to the best of my belief.</p> <p>MARCH 17, 1999 Date Surveyed CDG Signature Professional Surveyor RONALD J. EDSON 3239 99-11-0188 Certificate No. RONALD J. EDSON 3239 GARY EDSON 12641</p>	

BLOWOUT PREVENTER AND CHOKE MANIFOLD



10"/900 Cameron SS Space Saver
3000# Working Pressure
3000# Working Pressure Choke Manifold

Burch Keely Unit No. 864
260' FSL & 1185' FEL
Section 19; T17S - R30E
Eddy County, New Mexico

EXHIBIT ONE

Attachment to Exhibit #1
NOTES REGARDING THE BLOWOUT PREVENTERS

1. Drilling nipple to be so constructed that it can be removed without use of a welder through rotary table opening, with minimum I.D. equal to preventer bore.
2. Wear ring to be properly installed in head.
3. Blow out preventer and all fittings must be in good condition, 1000 psi W.P. minimum.
4. All fittings to be flanged.
5. Safety valve must be available on rig floor at all times with proper connections, valve to be full bore 1000 psi W.P. minimum.
6. All choke and fill lines to be securely anchored, especially ends of choke lines.
7. Equipment through which bit must pass shall be at least as large as the diameter of the casing being drilled through.
8. Kelly cock on kelly.
9. Extension wrenches and hand wheels to be properly installed.
10. Blow out preventer control to be located as close to driller's position as feasible.
11. Blow out preventer closing equipment to include minimum 40 gallon accumulator, two independent sources of pump power on each closing unit installation, and meet all API specifications.