

District I  
PO Box 1980, Hobbs, NM 88241-1980

District II  
811 South First, Artesia, NM 88210

District III  
1000 Rio Brazos Rd., Aztec, NM 87410

District IV  
2040 South Pacheco, Santa Fe, NM 87505

State of New Mexico  
Energy, Minerals & Natural Resources Department

Form C-101  
Revised October 18, 1994

Instructions on back  
Submit to Appropriate District Office  
State Lease - 6 Copies  
Fee Lease - 5 Copies

OIL CONSERVATION DIVISION  
2040 South Pacheco  
Santa Fe, NM 87505

☐ AMENDED REPORT

APPLICATION FOR PERMIT TO DRILL, RE-ENTER, DEEPEN, PLUG BACK, OR ADD A ZONE

Operator Name and Address MARBOB ENERGY CORPORATION P.O. BOX 227 ARTESIA, NM 88210		OGRID Number 14049
Property Code 20366		API Number 30-015-30725
Property Name FORAN STATE		Well No. 2

Surface Location

UL or lot no.	Section	Township	Range	Lot Idn	Feet from the	North/South line	Feet from the	East/West Line	County
H	16	17S	31E	SENE	1650	NORTH	330	EAST	EDDY

Proposed Bottom Hole Location If Different From Surface

UL or lot no.	Section	Township	Range	Lot Idn	Feet from the	North/South line	Feet from the	East/West Line	County
Proposed Pool 1 26770 Freen; Paddock					Proposed Pool 2				

Work Type Code N	Well Type Code O	Cable/Rotary R	Lease Type Code S	Ground Level Elevation 3863
Multiple No	Proposed Depth 6000	Formation	Contractor L&M	Spud Date 08-18-99

Proposed Casing and Cement Program

Hole Size	Casing Size	Casing weight/foot	Setting Depth	Sacks of Cement	Estimated TOC
12 1/4"	8 5/8"	24#	450'	300	CIRC
7 7/8"	5 1/2"	17#	6000'	SUFFICIENT TO COVER	Post ID-1
				200' ABOVE ALL KNOWN	8-20-99
				O&G HORIZONS	APZ & LCC

Describe the proposed program. If this application is to DEEPEN or PLUG BACK give the data on the present productive zone and proposed new productive zone. Describe the blowout prevention program, if any. Use additional sheets if necessary.

DRILL 12 1/4" HOLE TO 450', SET 8 5/8" CSG & CIRC CMT, NU 3000# BOPE - DRILL 7 7/8" HOLE TO TD @ APPX 6000', SET 5 1/2" CSG TO TD & CMT W/SUFFICIENT CMT TO COVER PRODUCTION ZONE PLUS A MINIMUM OF 200' OF CMT ABOVE PRODUCTION ZONE.

SEE EXHIBIT ATTACHED

I hereby certify that the information given above is true and complete to the best of my knowledge and belief.

Signature:

Robin Cockrum

Printed name: ROBIN COCKRUM

Title: PRODUCTION ANALYST

Date: 08-16-99

Phone: 748-3303

OIL CONSERVATION DIVISION

Approved By:

ORIGINAL SIGNED BY TIM W. GUM  
DISTRICT II SUPERVISOR

Title:

Approval Date:

8-18-99

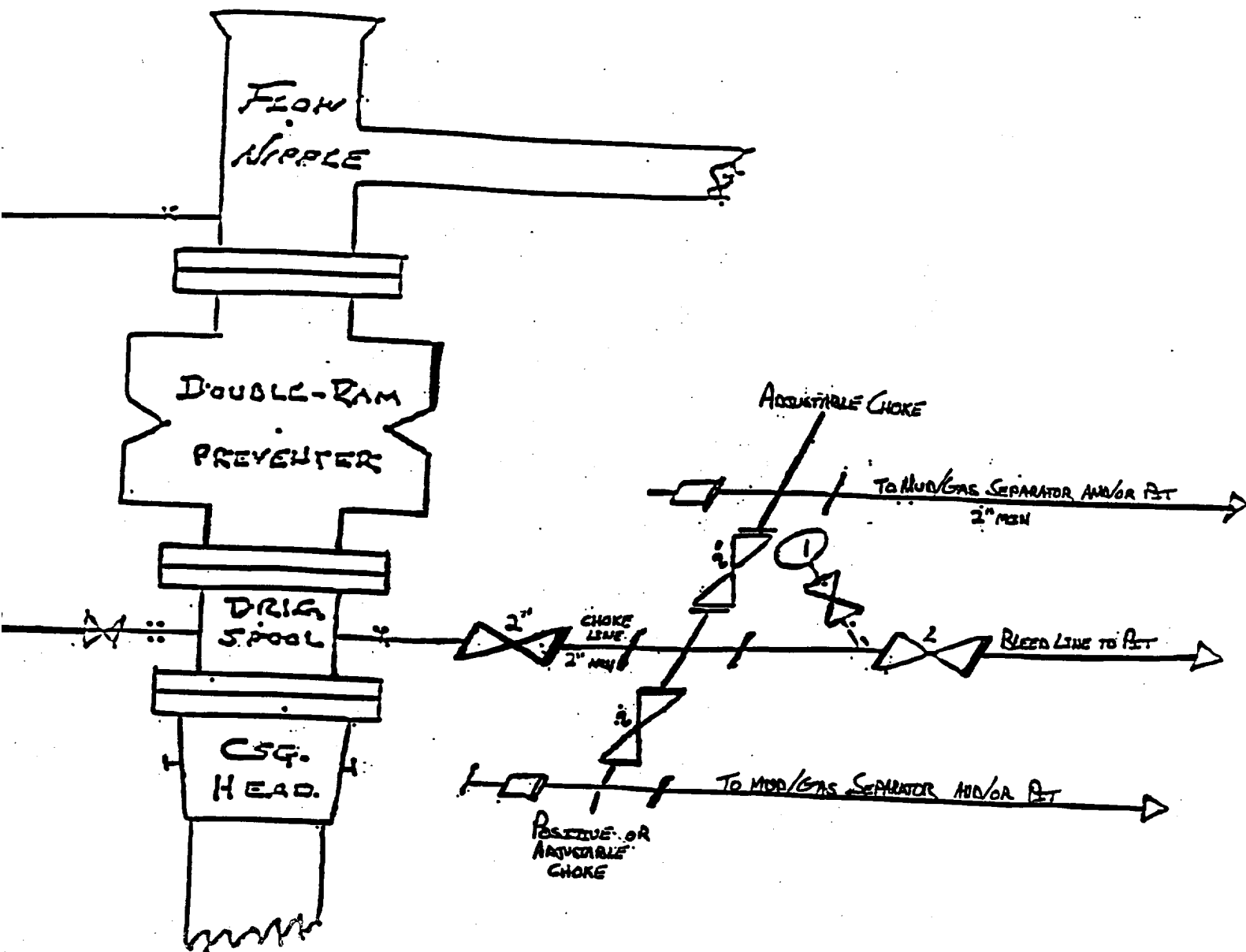
Expiration Date:

8-18-00

Conditions of Approval:

Attached: ☐

# BJ OW OUT PREVENTER AND CHOKE MANIFOLD



Marbob Energy Corporation  
Foran State No. 2  
1650' FNL & 330' FEL  
Section 16; T17s - R31e  
Eddy County, New Mexico

10"/900 Cameron SS Space Saver  
3000# Working Pressure  
3000# Working Pressure Choke Manifold

DISTRICT I  
P.O. Box 1980, Hobbs, NM 88241-1980

State of New Mexico  
Energy, Minerals and Natural Resources Department

Form C-102  
Revised February 10, 1994  
Submit to Appropriate District Office  
State Lease - 4 Copies  
Fee Lease - 3 Copies

DISTRICT II  
P.O. Drawer DD, Artesia, NM 88211-0719

DISTRICT III  
1000 Rio Brazos Rd., Aztec, NM 87410

DISTRICT IV  
P.O. Box 2088, Santa Fe, NM 87504-2088

OIL CONSERVATION DIVISION

P.O. Box 2088  
Santa Fe, New Mexico 87504-2088

☐ AMENDED REPORT

WELL LOCATION AND ACREAGE DEDICATION PLAT

API Number	Pool Code	Pool Name
	96831	CEDAR LAKE; YESO
Property Code	Property Name	Well Number
20366	FORAN STATE	2
OGRID No.	Operator Name	Elevation
14049	MARBOB ENERGY CORPORATION	3863

Surface Location

UL or lot No.	Section	Township	Range	Lot Idn	Feet from the	North/South line	Feet from the	East/West line	County
H	16	17 S	31 E		1650	HORTH	330	EAST	EDDY

Bottom Hole Location If Different From Surface

UL or lot No.	Section	Township	Range	Lot Idn	Feet from the	North/South line	Feet from the	East/West line	County

Dedicated Acres	Joint or Infill	Consolidation Code	Order No.
40			

NO ALLOWABLE WILL BE ASSIGNED TO THIS COMPLETION UNTIL ALL INTERESTS HAVE BEEN CONSOLIDATED  
OR A NON-STANDARD UNIT HAS BEEN APPROVED BY THE DIVISION

	<b>OPERATOR CERTIFICATION</b>  I hereby certify the the information contained herein is true and complete to the best of my knowledge and belief.   Signature  DEAN CHUMBLEY Printed Name  LANDMAN Title  AUGUST 16, 1999 Date	
	<b>SURVEYOR CERTIFICATION</b>  I hereby certify that the well location shown on this plat was plotted from field notes of actual surveys made by me or under my supervision and that the same is true and correct to the best of my belief.  AUGUST 11, 1999 Date Surveyed  Signature & Seal of Professional Surveyor  W.O. Num. 99-120651  Certificate No. RONALD J. EIDSON, 3239 GARY O. EIDSON, 12841 MACON McDONALD, 12185	