

UNITED STATES
DEPARTMENT OF THE INTERIOR
BUREAU OF LAND MANAGEMENT

N. M. Oil Cons. Division

8145.187
ARTESIA, NM 882
reverse side)
769

FORM APPROVED
OMB NO. 1004-0136
Expires February 28, 1995

APPLICATION FOR PERMIT TO DRILL OR DEEPEN

1a. TYPE OF WORK

Drill ☒

Deepen ☐

b. TYPE OF WELL

Oil Well ☒

Gas Well ☐

Other ☐

Single Zone ☒

Multiple Zone ☐

2. NAME OF OPERATOR

Shahara Oil, LLC

3. ADDRESS AND TELEPHONE NO.

207 W. McKay

Phone: 505-885-5433

Carlsbad, NM 88220

Fax: 505-885-4989

4. LOCATION OF WELL (Report location clearly and in accordance with any State requirements.)

At surface

990' FSL & 2234' FEL, Unit O

At proposed prod. zone

890' 2234'

Same

14. DISTANCE IN MILES AND DIRECTION FROM NEAREST TOWN OR POST OFFICE *

1.2 miles southwest of Loco Hills, NM

15. DISTANCE FROM PROPOSED *

LOCATION TO NEAREST

PROPERTY OR LEASE LINE, FT.

330'

(Also to nearest drlg. unit line, if any)

18. DISTANCE FROM PROPOSED LOCATION*

TO NEAREST WELL, DRILLING, COMPLETED,

330'

OR APPLIED FOR, ON THIS LEASE, FT.

21. ELEVATIONS (Show whether DF, RT, GR, etc)

3597' GR

22. APPROX. DATE WORK WILL START *

September 1, 1999

23. PROPOSED CASING AND CEMENTING PROGRAM

SIZE OF HOLE	GRADE, SIZE OF CASING	WEIGHT PER FOOT	SETTING DEPTH	QUANTITY OF CEMENT
12 1/4"	8 5/8"	24# K-55	500'	300 sx - circulate
7 7/8"	5 1/2"	17# J-55	3400'	600 sx -
				100' above 8 5/8" csg shoe

The operator proposes to drill to a depth sufficient to test the Queen, Grayburg and San Andres for oil.

Specific programs are outlined in the following attachments:

DRILLING PROGRAM

SURFACE USE AND OPERATING PLAN

EXHIBIT A - ROAD MAP

EXHIBIT B - EXISTING WELL MAP

EXHIBIT C - LOCATION AND ACREAGE DEDICATION PLAT

EXHIBIT C-1 - TOPO MAP

EXHIBIT D - DRILLING AND RIG LAYOUT

EXHIBIT E - 3M BOP EQUIPMENT

Bureau of Land Management
Received

AUG 02 1999

Carlsbad Field Office
Carlsbad, N.M.

Post ID# 10-22-99
APE & LOC

IN ABOVE SPACE DESCRIBE PROPOSED PROGRAM: If proposal is to deepen, give data on present productive zone and proposed new productive zone. If proposal is to drill or deepen directionally, give pertinent data on subsurface locations and measured and true vertical depths. Give blowout preventer program, if any.

24.

SIGNED

Shallia Marshall

TITLE

Agent

DATE

07/28/99

(This space for Federal or State office use)

PERMIT NO.

APPROVAL DATE

Application approval does not warrant or certify that the applicant holds legal or equitable title to those rights in the subject lease which would entitle the applicant to conduct operations thereon.

CONDITIONS OF APPROVAL, IF ANY:

(ORIG. SGD.) ARMANDO A. LOPEZ

Acting

Assistant Field Office Manager,
Lands and Minerals

APPROVED BY

TITLE

DATE

OCT 08 1999

*See Instructions On Reverse Side

Title 18 U.S.C. Section 1001, makes it a crime for any person knowingly and willfully to make to any department or agency of the United States any false, fictitious or fraudulent statements or representations as to any matter within its jurisdiction.

ROSWELL, NM
BLM

APR 29 2008

RECEIVED

DISTRICT I
P.O. Box 1980, Hobbs, NM 88241-1980

State of New Mexico
Energy, Minerals and Natural Resources Department

Form C-102
Revised February 10, 1994
Submit to Appropriate District Office
State Lease - 4 Copies
Fee Lease - 3 Copies

DISTRICT II
P.O. Drawer DD, Artesia, NM 88211-0719

DISTRICT III
1000 Rio Brazos Rd., Aztec, NM 87410

OIL CONSERVATION DIVISION

P.O. Box 2088
Santa Fe, New Mexico 87504-2088

DISTRICT IV
P.O. Box 2088, Santa Fe, NM 87504-2088

☐ AMENDED REPORT

WELL LOCATION AND ACREAGE DEDICATION PLAT

API Number	Pool Code	Pool Name
Property Code	Property Name BEESON "F" FEDERAL	Well Number 28
OGRID No.	Operator Name SHAHARA OIL, LLC.	Elevation 3597

Surface Location

UL or lot No.	Section	Township	Range	Lot Idn	Feet from the	North/South line	Feet from the	East/West line	County
0	29	17 S	30 E		890	SOUTH	2234	EAST	EDDY

Bottom Hole Location If Different From Surface

UL or lot No.	Section	Township	Range	Lot Idn	Feet from the	North/South line	Feet from the	East/West line	County
Dedicated Acres 40	Joint or Infill	Consolidation Code	Order No.						

NO ALLOWABLE WILL BE ASSIGNED TO THIS COMPLETION UNTIL ALL INTERESTS HAVE BEEN CONSOLIDATED
OR A NON-STANDARD UNIT HAS BEEN APPROVED BY THE DIVISION

				OPERATOR CERTIFICATION	
				<p>I hereby certify the the information contained herein is true and complete to the best of my knowledge and belief.</p> <p><u>Perry L. Hughes</u> Signature <u>Perry L. Hughes</u> Printed Name <u>PRESIDENT</u> Title <u>9/7/99</u> Date</p>	
				SURVEYOR CERTIFICATION	
				<p>I hereby certify that the well location shown on this plat was plotted from field notes of actual surveys made by me or under my supervision, and that the same is true and correct to the best of my belief.</p> <p>AUGUST 27, 1999</p> <p>Date Surveyed Signature & Seal of Professional Surveyor <u>Ronald J. Eidson</u> SW:O. Num. 99-14-0702</p>	
				Date Surveyed Signature & Seal of Professional Surveyor <u>Ronald J. Eidson</u> SW:O. Num. 99-14-0702	
				Certificate No. RONALD J. EIDSON, 3239 SW:O. EIDSON, 12641 MASON McDONALD, 12185	

3599.9' 3602.3'

3598.2' 3599.8'

890'

2234'

RECEIVED

SEP 10 1972

ROS. BLM
10/11

Existing Well Map

Shahara Oil, LLC
Beeson "F" Federal No. 28
 990' FSL & 2334' FEL, Unit O
 Sec 29, T17S, R30E
 Eddy County, New Mexico
 Lease No. LC-060529

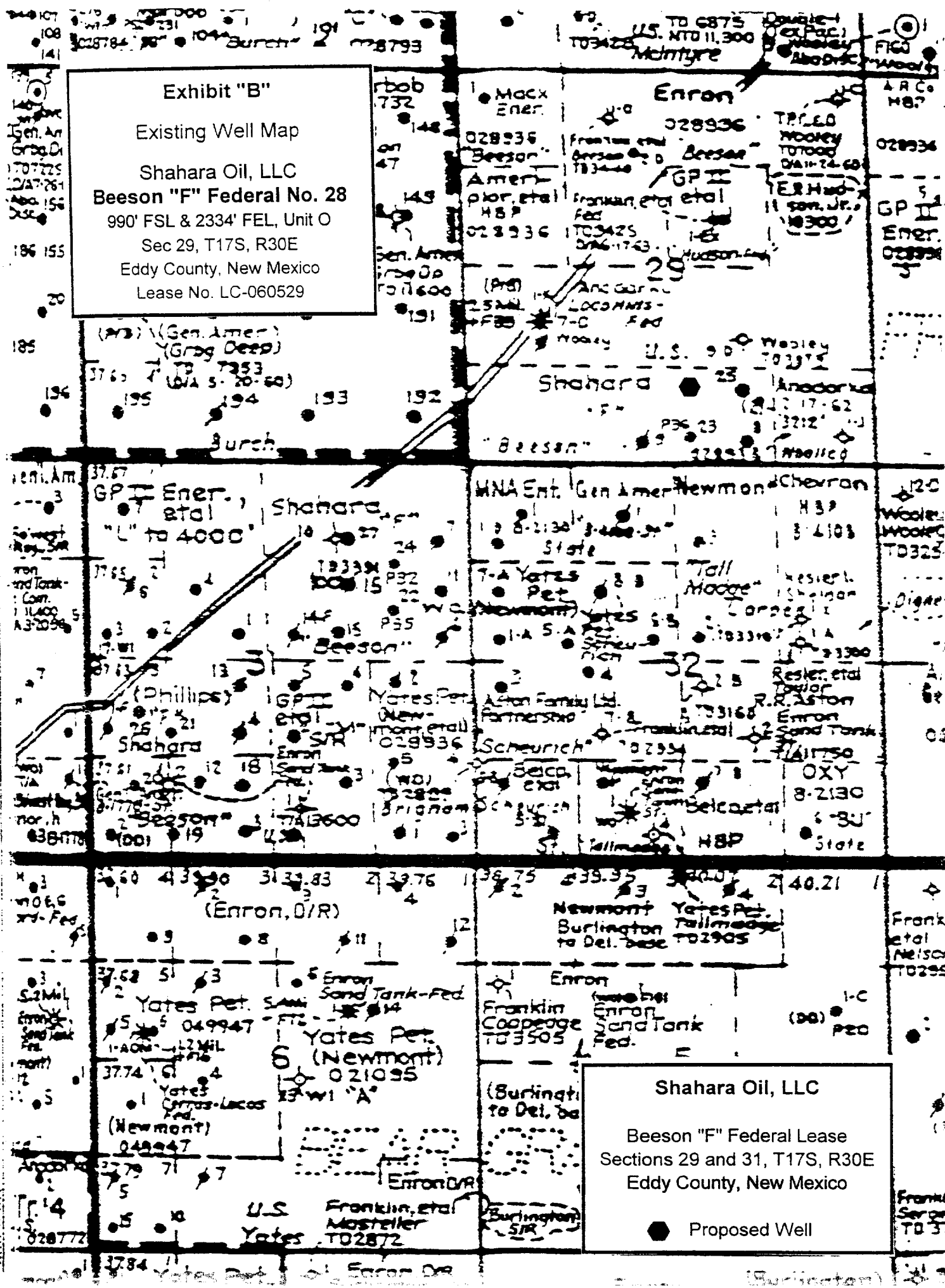


Exhibit "E"

BOP Equipment

Shahara Oil, LLC
Beeson "F" Federal No. 28

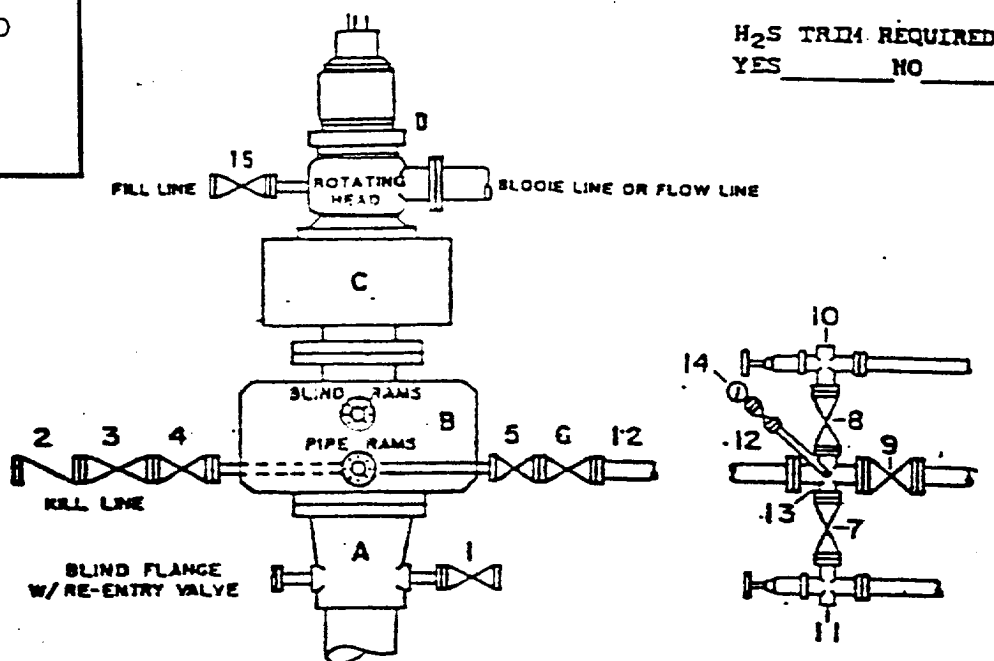
990' FSL & 2334' FEL, Unit O

Sec 29, T17S, R30E

Eddy County, New Mexico

Lease No. LC-060529

DRILLING CONTROL CONDITION III-B 3000 PSI WP



H₂S TRIM REQUIRED
YES _____ NO _____

DRILLING CONTROL

MATERIAL LIST - CONDITION III - B

- | | |
|-------------------|---|
| A | Wellhead |
| B | 3000# W.P. Dual ram type preventer, hydraulic operated with 1" steel, 3000# W.P. control lines (where sub-structure height is adequate, 2 - 3000# W.P. single ram preventers may be utilized with 3000# W.P. drilling spool with 2" minimum flanged outlet for kill line and 1" minimum flanged outlet for choke line. The drilling spool is to be installed below the single ram type preventers). |
| C | 3000# W.P. Annular Preventer with 1" steel, 3000# W.P. control lines. |
| D | Rotating Head with fill up outlet and extended Blower line. |
| 1, 3, 4,
7, 8, | 2" minimum 3000# W.P. flanged full opening steel gate valve, or Halliburton Lo Torc Plug valve. |
| 2 | 2" minimum 3000# W.P. back pressure valve. |
| 5, 6, 7 | 3" minimum 3000# W.P. flanged full opening steel gate valve, or Halliburton Lo Torc Plug valve. |
| 12 | 1" minimum Schedule 80, Grade 2, seamless line pipe. |
| 13 | 2" minimum x 1" minimum 3000# W.P. flanged cross. |
| 10, 11 | 2" minimum 3000# W.P. adjustable choke bodies. |
| 14 | Cameron Mud Gauge or equivalent (location optional in Choke line). |
| 15 | 2" minimum 3000# W.P. flanged or threaded full opening steel gate valve, or Halliburton Lo Torc Plug valve. |

SCALE:	DATE	EST. NO.	CRG. NO.
DRAWN BY			
CHECKED BY			
APPROVED BY			

EXHIBIT E