

UNITED STATES  
DEPARTMENT OF THE INTERIOR  
BUREAU OF LAND MANAGEMENT

321

APPLICATION FOR PERMIT TO DRILL, DEEPEN, OR PLUG BACK

1a. TYPE OF WORK

DRILL ☒

DEEPEN ☐

PLUG BACK ☐

b. TYPE OF WELL

OIL  
WELL ☒

GAS  
WELL ☐

OTHER

SINGLE  
ZONE ☐

MULTIPLE  
ZONE ☐

2. NAME OF OPERATOR

Marbob Energy Corporation

3a. Area Code & Phone No.

505-748-3303

3. ADDRESS OF OPERATOR

P. O. BOX 227 Artesia, NM 88210

4. LOCATION OF WELL (Report location clearly and in accordance with any State requirements.)\*  
At surface

1650 FSL 990 FEL  
At proposed prod. zone

SAME

14. DISTANCE IN MILES AND DIRECTION FROM NEAREST TOWN OR POST OFFICE\*

EAST OF ARTESIA ON HWY 82 APPROX. 24.7 MILES

15. DISTANCE FROM PROPOSED\*

LOCATION TO NEAREST  
PROPERTY OR LEASE LINE, FT.  
(Also to nearest drig. unit line, if any)

990'

16. NO. OF ACRES IN LEASE

80

17. NO. OF ACRES ASSIGNED  
TO THIS WELL

40

18. DISTANCE FROM PROPOSED LOCATION\*  
TO NEAREST WELL, DRILLING, COMPLETED,  
OR APPLIED FOR, ON THIS LEASE, FT.

19. PROPOSED DEPTH

5000'

20. ROTARY OR CABLE TOOLS

ROTARY

21. ELEVATIONS (Show whether DF, RT, GR, etc.)

3679' GR

22. APPROX. DATE WORK WILL START\*

3/1/98

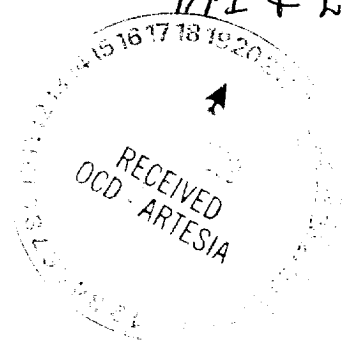
PROPOSED CASING AND CEMENTING PROGRAM

HOLE SIZE	CASING SIZE	WEIGHT/FOOT	GRADE	THREAD TYPE	SETTING DEPTH	QUANTITY OF CEMENT
12 1/4"	8 5/8"	24#	J-55	LT&C	350'	300 SX
7 7/8"	5 1/2"	17#	J-55	LT&C	5000'	1100 SX
					6000'	

PAY ZONE WILL BE SELECTIVELY STIMULATED AND PERFORATED AS  
NEEDED FOR OPTIMUM PRODUCITON.

ATTACHED ARE: 1. LOCATION & DEDICATION ACREAGE PLAT  
2. SUPPLEMENTAL DRILLING DATA  
3. SURFACE USE PLAN

Post ID-1  
10-22-99  
API & LOC



IN ABOVE SPACE DESCRIBE PROPOSED PROGRAM: If proposal is to deepen or plug back, give data on present productive zone and proposed new productive zone. If proposal is to drill or deepen directionally, give pertinent data on subsurface locations and measured and true vertical depths. Give blowout preventer program, if any.

SIGNED Phonda Nelson TITLE Production Clerk

DATE 2/4/98

(This space for Federal or State office use)

PERMIT NO. /S/LARRY D. BRAY

APPROVAL DATE

APPROVED BY

Acting

Assistant Field Office Manager,  
Lands and Minerals

CONDITIONS OF APPROVAL, IF ANY:

DATE

APPROVED FOR 1 YEAR

\*See Instructions On Reverse Side

DISTRICT II  
P.O. Drawer DD, Artesia, NM 88211-0719

DISTRICT III  
1000 Rio Brazos Rd., Aztec, NM 87410

DISTRICT IV  
P.O. BOX 2088, SANTA FE, N.M. 87504-2088

## OIL CONSERVATION DIVISION

P.O. Box 2088  
Santa Fe, New Mexico 87504-2088

☐ AMENDED REPORT

## WELL LOCATION AND ACREAGE DEDICATION PLAT

API Number		Pool Code	Pool Name	
Property Code	Property Name RED FEDERAL			Well Number 1
OGRID No.	Operator Name MARBOB ENERGY CORPORATION			Elevation 3679'

### Surface Location

UL or lot No.	Section	Township	Range	Lot Idn	Feet from the	North/South line	Feet from the	East/West line	County
I	17	17 S	30 E		1650	SOUTH	990	EAST	EDDY

## Bottom Hole Location If Different From Surface

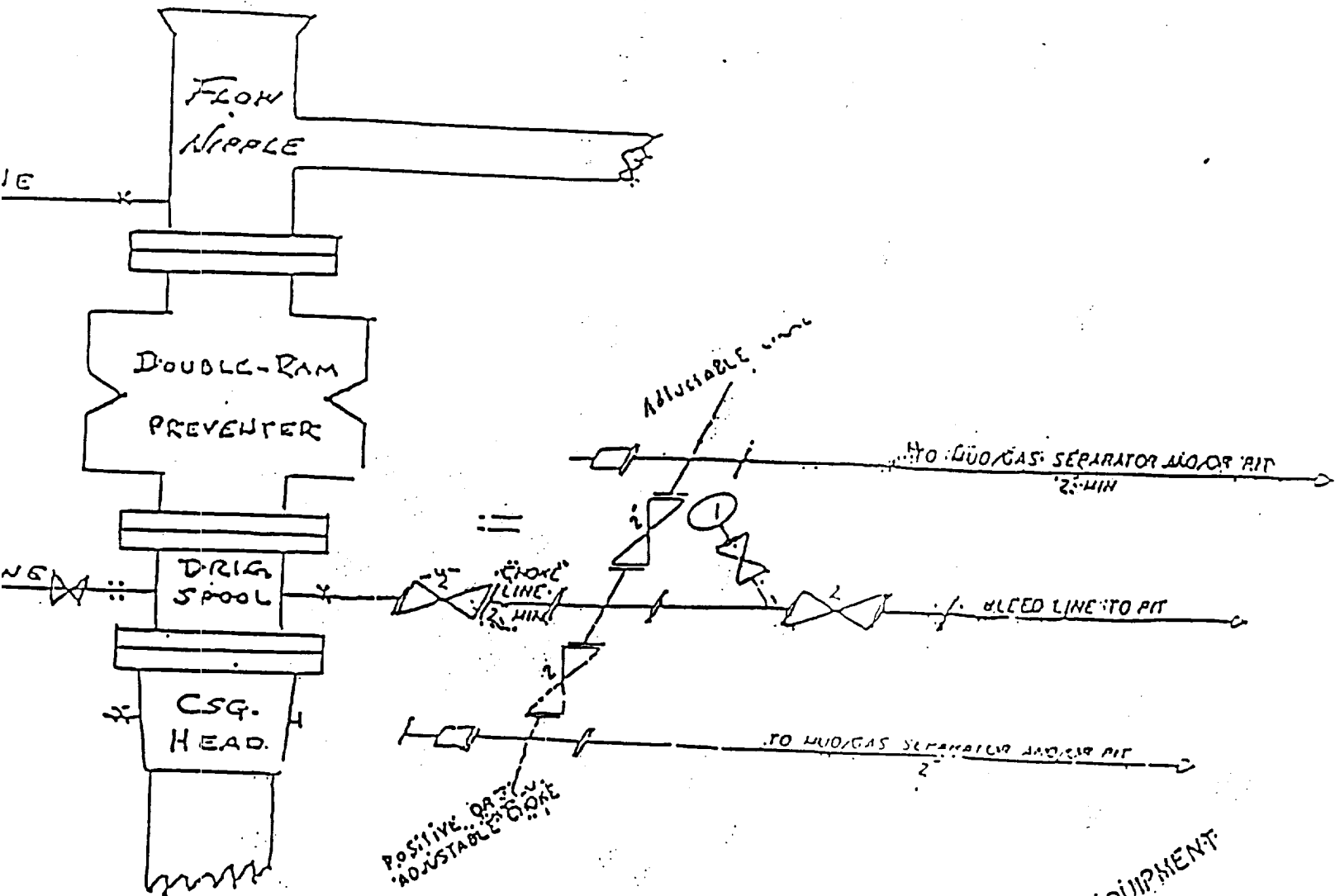
UL or lot No.	Section	Township	Range	Lot Idn	Feet from the	North/South line	Feet from the	East/West line	County
Dedicated Acres 4C	Joint or Infill	Consolidation Code		Order No.					

NO ALLOWABLE WILL BE ASSIGNED TO THIS COMPLETION UNTIL ALL INTERESTS HAVE BEEN CONSOLIDATED  
OR A NON-STANDARD UNIT HAS BEEN APPROVED BY THE DIVISION

<div style="font-size: 48px; margin: 0;">1</div>	<div style="text-align: center;"><b>OPERATOR CERTIFICATION</b></div> <p style="text-align: center;"><i>I hereby certify the the information contained herein is true and complete to the best of my knowledge and belief.</i></p> <div style="text-align: right; margin-bottom: 10px;"> _____ Signature</div> <div style="text-align: right; margin-bottom: 10px;">_____ Printed Name</div> <div style="text-align: right; margin-bottom: 10px;">_____ Title</div> <div style="text-align: right;">_____ Date</div>
	<div style="text-align: center;"><b>SURVEYOR CERTIFICATION</b></div> <p style="text-align: center;"><i>I hereby certify that the well location shown on this plat was plotted from field notes of actual surveys made by me or under my supervision, and that the same is true and correct to the best of my belief.</i></p> <div style="text-align: right; margin-bottom: 10px;">JANUARY, 30 1998 Date Surveyed</div> <div style="text-align: right;">CDG Signature &amp; Seal of Professional Surveyor</div> <div style="text-align: right; margin-top: 20px;"> _____ 2-03-98 98-11-0122</div>
	<div style="text-align: center;">Certificate No. RONALD J. EIDSON 3239 GARY EIDSON 12641</div>

# B O P & CHOKES MANIFOLD

10"/900 Cameron SS Space Saver  
 3000# Working Pressure  
 3.000# Working Pressure Choke Manifold



214 CHOKES MANIFOLD EQUIPMENT

MARBOB ENERGY CORPORATION  
 Red Federal No. 1  
 1650' FSL and 990' FEL  
 Section 17, R-17S, R-30E  
 Eddy County, New Mexico

Exhibit #1

Attachment to Exhibit #1  
NOTES REGARDING THE BLOWOUT PREVENTERS

1. Drilling nipple to be so constructed that it can be removed without use of a welder through rotary table opening, with minimum I.D. equal to preventer bore.
2. Wear ring to be properly installed in head.
3. Blow out preventer and all fittings must be in good condition, 1000 psi W.P. minimum.
4. All fittings to be flanged.
5. Safety valve must be available on rig floor at all times with proper connections, valve to be full bore 1000 psi W.P. minimum.
6. All choke and fill lines to be securely anchored, especially ends of choke lines.
7. Equipment through which bit must pass shall be at least as large as the diameter of the casing being drilled through.
8. Kelly cock on kelly.
9. Extension wrenches and hand wheels to be properly installed.
10. Blow out preventer control to be located as close to driller's position as feasible.
11. Blow out preventer closing equipment to include minimum 40 gallon accumulator, two independent sources of pump power on each closing unit installation, and meet all API specifications.

## DRILLING PROGRAM

Attached to Form 3160-3  
Marbob Energy Corporation  
Red Federal No. 1  
1650' FSL and 990' FEL  
Section 17-17S-30E  
Eddy County, New Mexico

1. Geologic Name of Surface Formation:

Permian

2. Estimated Tops of Important Geologic Markers:

Permian	Surface		
Salt	360'	Queen	1815'
Base of Salt	780'	Grayburg	2140'
Yates	930'	San Andres	2510'
Seven Rivers	1145'	Glorietta	3900'

3. Estimated Depths of Anticipated Fresh Water, Oil or Gas:

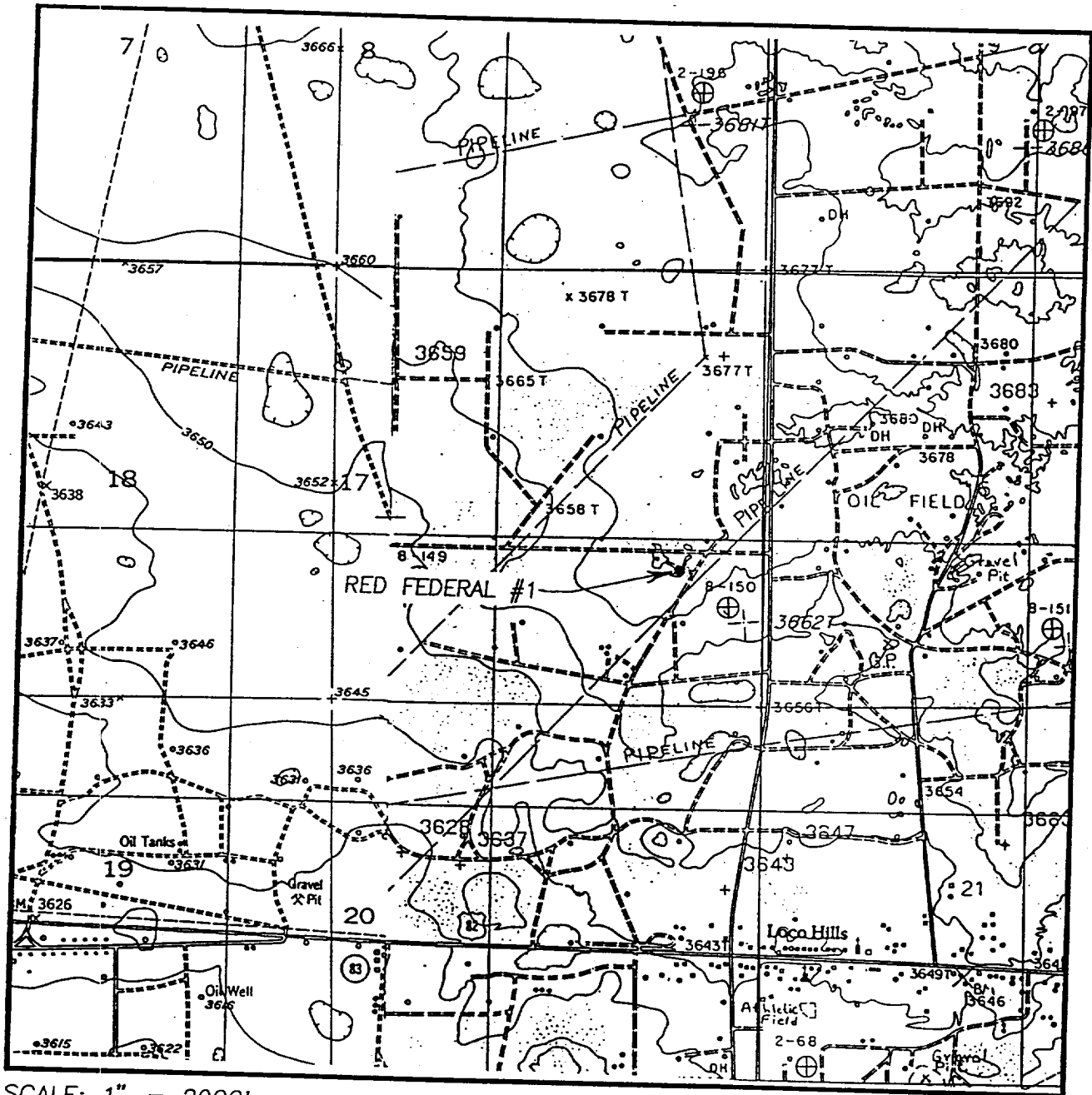
Upper Permian Sands	100'	Fresh Water
Yates	930'	Oil
Seven Rivers	1145'	Oil
Queen	1815'	Oil
Grayburg	2140'	Oil
San Andres	2510'	Oil
Glorietta	3900'	Oil

No other formations are expected to give up oil, gas, or fresh water in measurable quantities. The surface fresh water sands will be protected by setting 8 5/8 casing at 350' and circulating cement back to surface. Any shallower zones above TD which contain commercial quantities of oil and/or gas will have cement circulated across them by inserting a float shoe joint into the 5 1/2" production casing which will be run at TD.

4. Casing Program:

<u>Hole Size</u>	<u>Interval</u>	<u>OD csg</u>	<u>Weight, Grade, Jt. Cond. Type</u>
12 1/4"	0 - 350"	8 5/8"	24# J-55 LTC NEW R-3
7 7/8"	0 - TD	5 1/2"	17# J-55 LTC NEW R-3

# LOCATION VERIFICATION MAP



SCALE: 1" = 2000'

CONTOUR INTERVAL - 10'

SEC. 17 TWP. 17-S RGE. 30-E

SURVEY N.M.P.M.

COUNTY EDDY

DESCRIPTION 1650' FSL & 990' FEL

ELEVATION 3679'

OPERATOR MARBOB ENERGY CORPORATION

LEASE RED FEDERAL

U.S.G.S. TOPOGRAPHIC MAP

LOCO HILLS, RED LAKE SE, NM

**JOHN WEST ENGINEERING  
HOBBS, NEW MEXICO**

**(505) 393-3117**